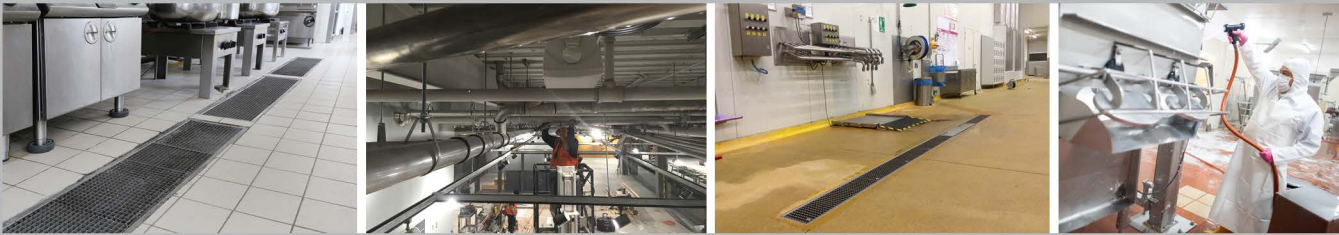


WARNING - Don't Neglect What Could be Happening Beyond Your Stainless Steel Surfaces



Bacteria can live and grow well beyond the surface

Piping and drainage systems in your facility could be fostering unsafe amounts of bacteria. Harboring bacteria in drains is a serious concern in many food processing applications, and the demand for non-porous surface and hygienic characteristics of stainless steel continues to increase. That's where Josam comes in, with our extremely hygienic drainage products.

- Pipes, fittings, floor drains, slot channels, & trench drains
- Made of 304 and 316L austenitic stainless steel
- Customized to meet your specific hygienic drainage needs
- Cost effective drainage solutions • Greater life expectancy

It was recently cited that a Blue Bell, Broken Arrow, Ok. facility was shut down due to listeria found in the drains.



JOSAM

Contact your local Josam representative or visit www.josam.com

800.36.JOSAM | www.josam.com