

SPECIFICATION:

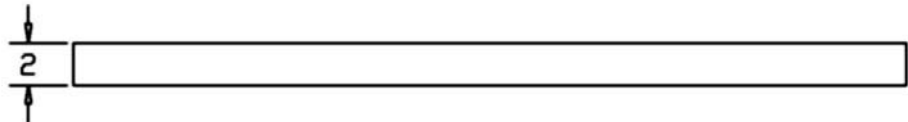
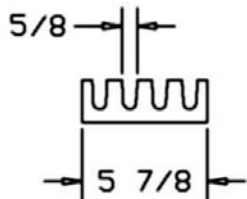
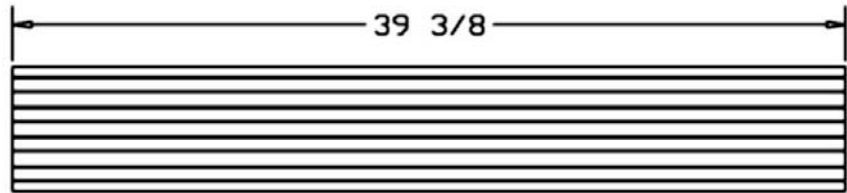
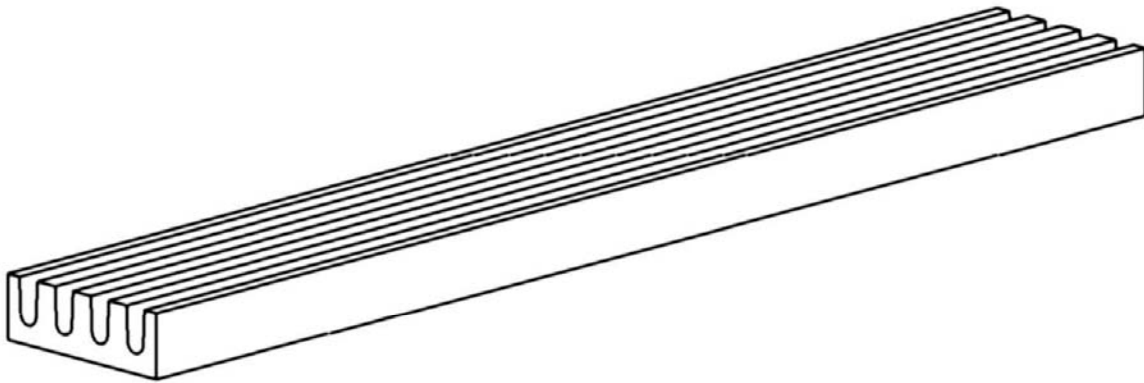
MEA-JOSAM SOLUTION PG 1500 POLYMER CONCRETE ONE PIECE SLOTTED CHANNEL FOR USE IN MULTI-STORY PARKING GARAGES AND OTHER SHALLOW SLAB APPLICATIONS.

MEADRAIN SOLUTION

PG 1500

SERIES

LOADING CLASS A THROUGH C



DRAWING No.

-

MEA JOSAM
MICHIGAN CITY, INDIANA

NOTES