

SPECIFICATION:

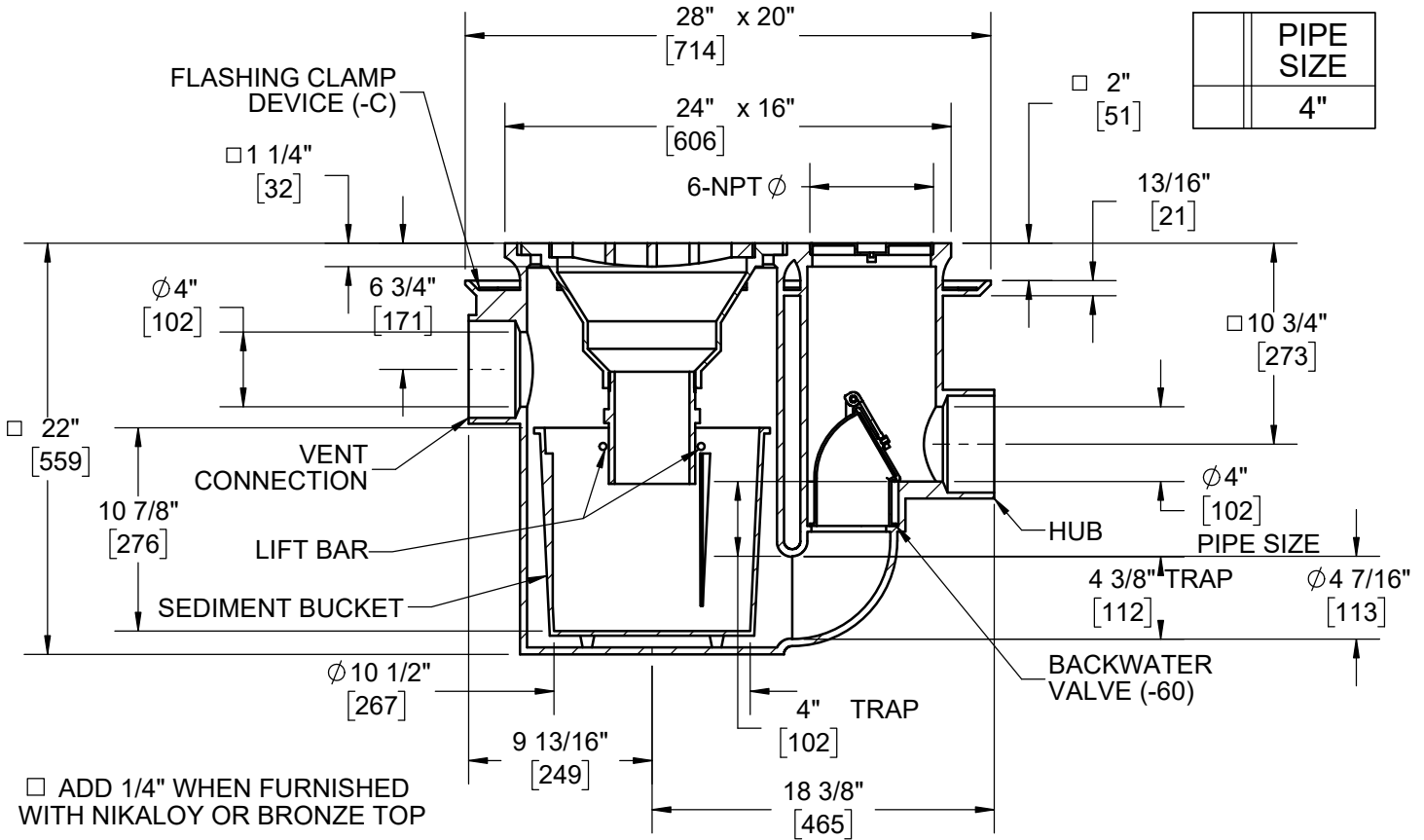
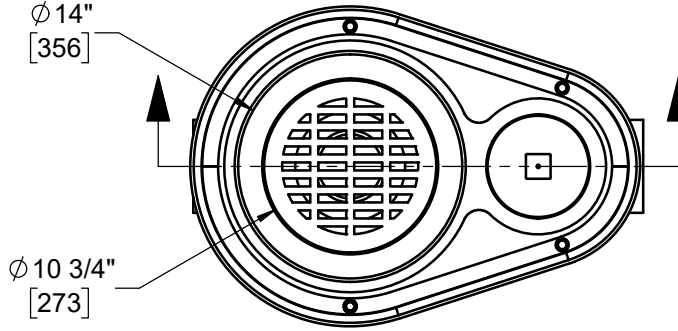
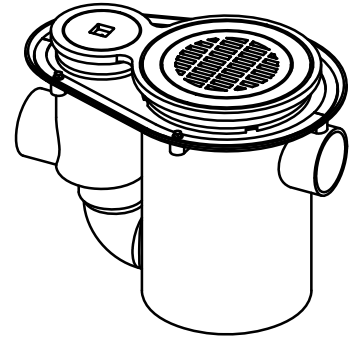
JOSAM 38420-IGS SERIES COATED CAST IRON COMBINATION FLOOR EXTRA DEEP DRAIN AND INTEGRAL DEEP SEAL TRAP WITH DOUBLE DRAINAGE FLANGE, WEEPHOLES, SIDE OUTLET HUB VENT CONNECTION, ROUND TOP, FLUSH-WITH-FLOOR CLEANOUT AND REMOVABLE SEDIMENT BUCKET, FUNNEL SHAPED INTERNAL SEAL WITH INTEGRAL RIM DESIGNED SO THAT HEAVY-DUTY GRATE CANNOT BE REPLACED UNLESS FUNNEL IS IN POSITION.

**FLOOR DRAIN
WITH INTERNAL GAS SEAL**

SERIES **38420-IGS**

FORMERLY 39420 SERIES

GRATE FREE AREA: 21.4 IN²
STD. CAST IRON SLOT WIDTH: 1/2"
-1 AND -2 SLOT WIDTH 1/2"



PRODUCT IS NON-CANCELABLE AND NON-RETURNABLE NAME: _____ SIGNATURE: _____ DATE: _____

X	-IGS	INTERNAL GAS SEAL
	-1	-1 SATIN FINISH NIKALOY TOP
	-2	SATIN FINISH BRONZE TOP
	-15	CHAINED GRATE
	-VP	SECURED GRATE, VANDAL-PROOF SCREWS

	-C	BOLTED FLASHING CLAMP DEVICE
	-60	BACKWATER VALVE
	-84	STAINLESS STEEL MESH BUCKET LINER
	-92	GALVANIZED CAST IRON PARTS

DATE OF LAST CHANGE: 4/15/21

DIMENSIONS ARE SUBJECT TO MANUFACTURERS TOLERANCES AND CHANGE WITHOUT NOTICE. WE CAN ASSUME NO RESPONSIBILITY FOR USE OF SUPERSEDED OR VOID DATA.



NOTES

WARNING: Cancer and Reproductive Harm - www.P65Warnings.ca.gov