

SPECIFICATION:

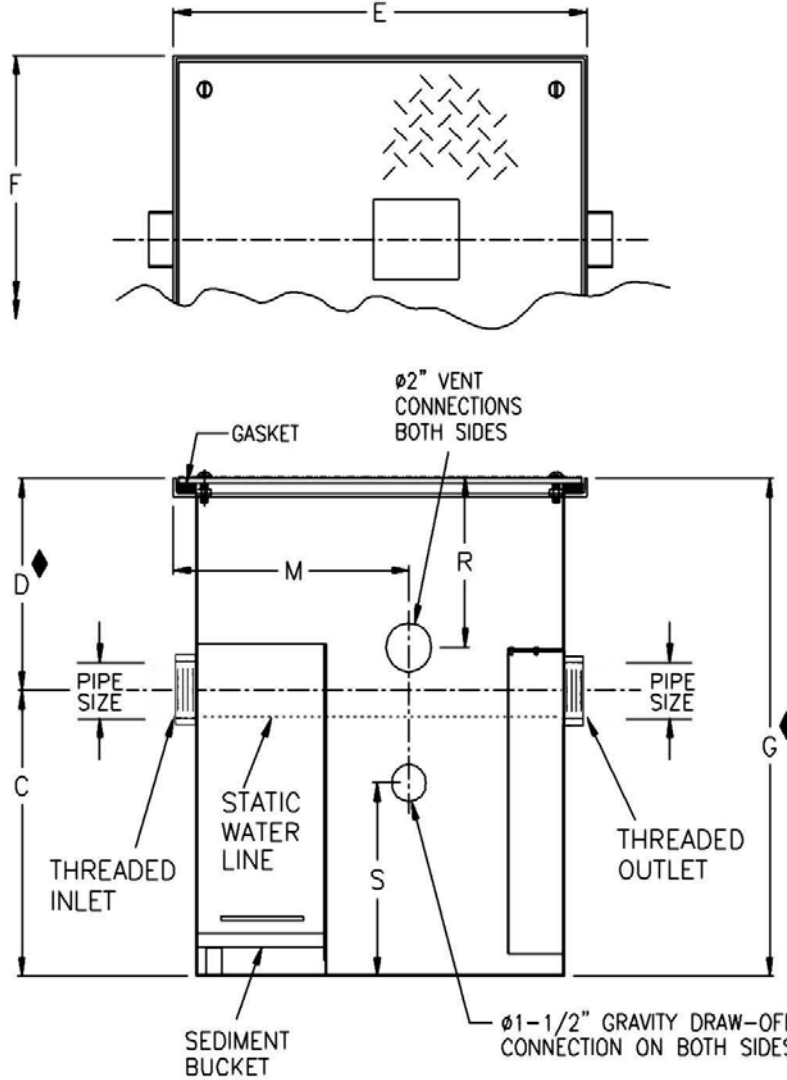
JOSAM 60500B-EXT SERIES EPOXY COATED FABRICATED STEEL OIL SEPARATOR, THREADED CONNECTIONS, DEEP ROUGHING, INTEGRAL EXTENTION, INTERNAL TRAP, SEDIMENT BUCKET, TWO VENT CONNECTIONS ON EACH SIDE, GASKETED NON-SKID COVER AND FLOW-CONTROL FITTING.

**OIL SEPARATOR
DRAW-OFF, GRAVITY TYPE**

60500B-EXT

SERIES

FORMERLY 60520A SERIES



- EXT EXTENSION, 6" STANDARD (SPECIFY EXT. HEIGHT)
- 60 ANCHOR FLANGE
- 61 FLANGE AND CLAMP DEVICE
- HD HEAVY-DUTY COVER



TYPE	FLOW RATE	PIPE SIZE	C	D \blacklozenge	E	F	G \blacklozenge	M	R	S
60503B-EXT	10	2"	10-1/2	10-1/8	15-7/16	12-3/8	20-5/8	6-5/8	2-7/8	8-1/2
60504B-EXT	15	2"	12-3/4	9-3/8	18-3/16	14-1/2	22-1/8	8	2-5/8	10-3/4
60505B-EXT	20	3"•	14-5/8	10-3/8	19-15/16	16-3/8	25	8-7/8	2-3/4	12
60506B-EXT	25	3"•	16	10	21-11/16	17-1/2	26	9-3/4	2-3/4	13-1/2
60507B-EXT	35	3"•	16-3/4	10-7/8	25-5/16	19-1/4	27-5/8	11-9/16	2-3/4	14-1/4
60508B-EXT	50	3"•	18-1/2	12-1/4	28-11/16	21-1/2	30-3/4	13-1/4	3	16

\blacklozenge DIMENSIONS BASED ON STANDARD 6" EXTENSION

• 3" SIZES NORMALLY FURNISHED WITH 4" x 3" REDUCING BUSHING

DRAWING No. 06/30/08

A-14478-K

JOSAM COMPANY
MICHIGAN CITY, INDIANA

NOTES: