

# 60610A-EGOLD

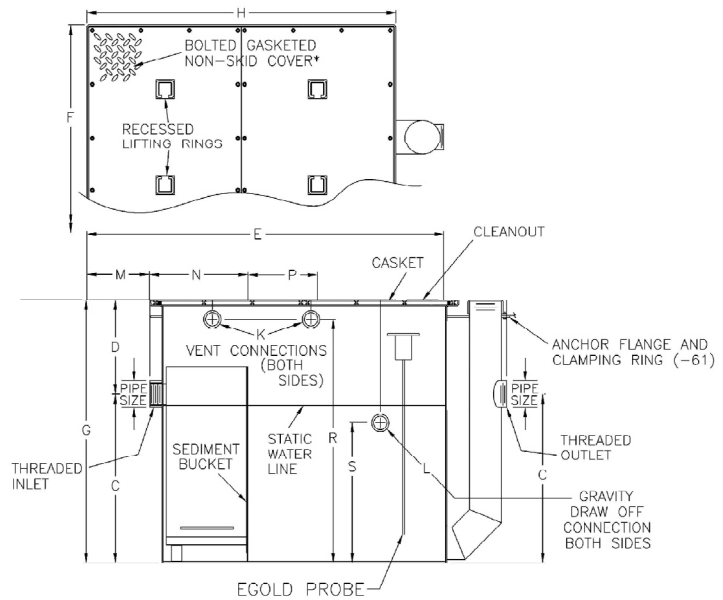
## Oil INTERCEPTOR

### Draw-Off, High-Volume Type

#### Specification

Josam 60610A-EGOLD series epoxy coated fabricated steel oil interceptor high-volume, threaded connections, visible double wall trap and sediment bucket, two vent connections on each side, gasketed non-skid cover, flow control fitting and factory installed Josam EGOLD-1000 electronic grease/oil level detector.

\*This sizes furnished with one-piece cover.



-EGOLD	Electronic grease/oil level detector
-EXT	Extension, 6" standard (specify EXT. height)
-60	Anchor flange (4" down from top)
-61	Flange and clamp device (4" down from top)
-HD	Heavy-duty cover

	Type	Flow rate	Pipe size	C	D	E	F	G	H	M	N	P	S
*	60611A-EGOLD	75	3	21	6	46-1/4	31	27	41	8-1/4	12-1/2	10-1/4	13-1/2
*	60612A-EGOLD	100	4	23	8	54	35	31	47	9-1/2	14-1/2	12-1/2	15-1/4
*	60613A-EGOLD	150	4	27	8	60	39	35	53	10-1/2	16-1/2	14-1/2	19-1/4
	60614A-EGOLD	200	5	31-1/2	10	67	42	41-1/2	58	11-1/2	18-1/8	16	26-1/4
	60615A-EGOLD	250	5	35-1/2	10	72	46	45-1/2	63	12-1/2	20-1/4	17-1/2	29-3/4
	60616A-EGOLD	350	6	39-1/2	12	80	52	51-1/2	71	13-1/2	23	19-3/4	34-1/4
	60617A-EGOLD	500	6	43-1/2	12	91	59	55-1/2	82	16	27	23	38-1/4

Josam product specifications in U.S. customary units are approximate and provided for reference only. For precise measurements, please contact Josam Technical Support. Josam reserves the right to change or modify product design, construction, specifications, or materials without prior notice and without incurring any obligation to make such changes and modifications on Josam products previously or subsequently sold.

Notes:



**A WATTS Brand**