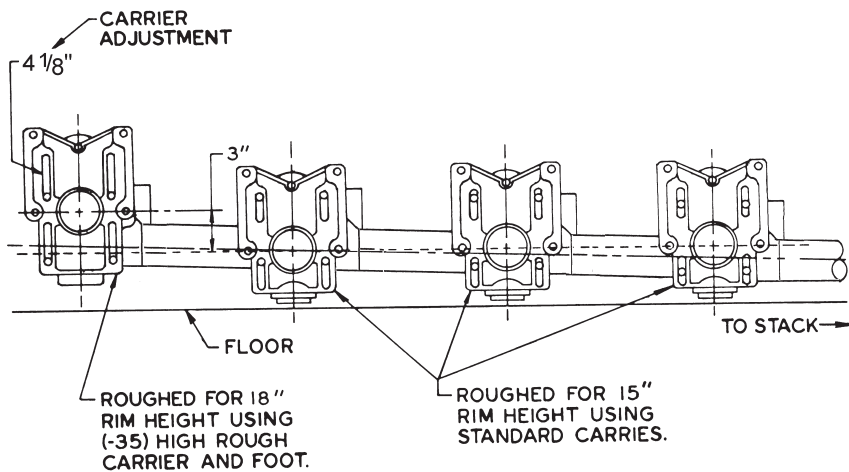
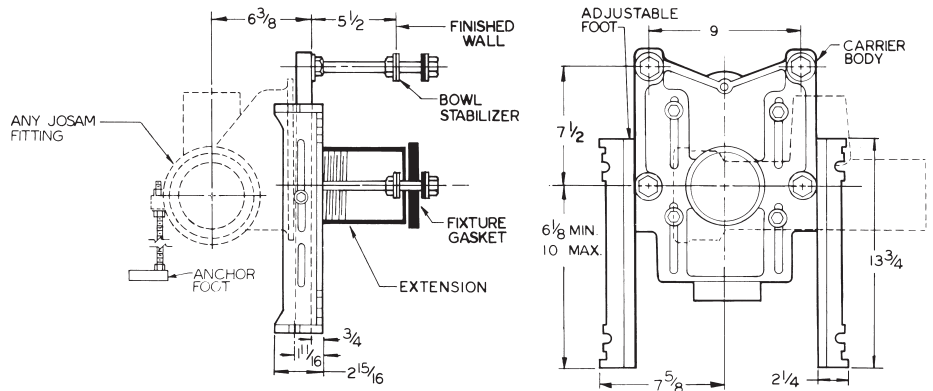


# CLOSET CARRIERS

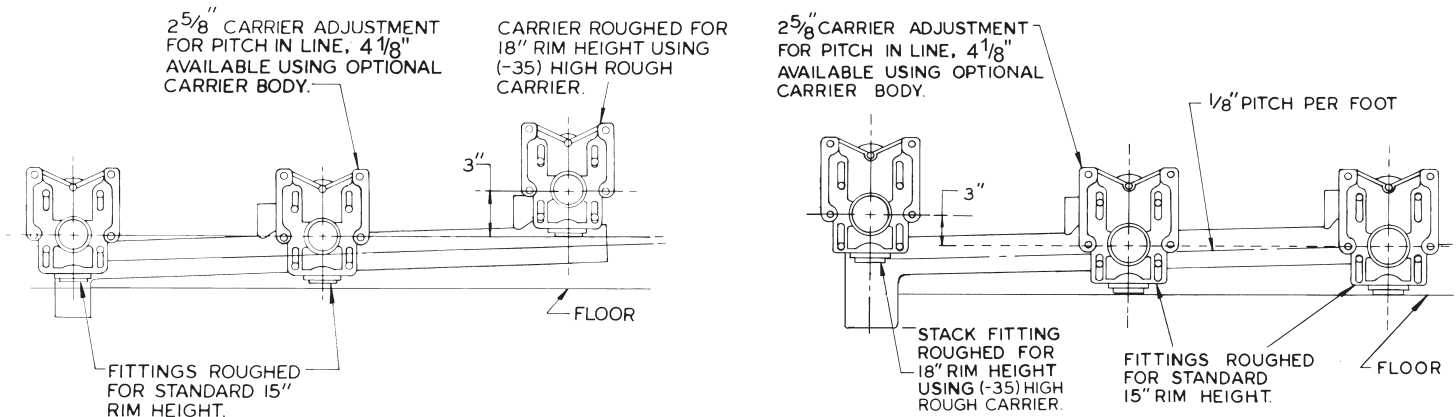
## Wheelchair Closet Carrier Installations

Accommodations for the physically disabled who depend on wheelchairs for mobility are of prime importance and should be included in any building where public toilet facilities are provided. Off-the-floor water closets are ideally suited for wheelchair use. In addition to the sanitation benefits, the elevation is not fixed as it is with the floor-mounted closets. By utilizing the JOSAM line of carriers and fittings, the wheelchair closet can be located anywhere in a battery. See Carrier Selection Chart. The illustrations below show the wheelchair closet in various locations.

(-35) Option Carrier can be used with all adjustable fittings. When used with blowout closets over 12 1/2", specify -M1358.



To the left is a possible installation utilizing the -35 Option at the end of a battery of standard rough carriers.



The above shows an installation utilizing a JOSAM vertical fitting and carrier and a horizontal waste line with fittings and carriers. The horizontal fitting and carrier on the end show the (-35) high rough for wheelchair use.

The above shows an installation utilizing a standard JOSAM stack fitting with the carrier on this fitting roughed for wheelchair use. With this installation one to three horizontal fittings can be connected to the stack fitting.