

38420 SERIES NON-CLOG WITH CLEANOUT & BUCKET

APPLICATION

For use in medium traffic areas such as bottling plants, on or below grade where a deep seal trap protects against sewer gas and vermin and a floor level cleanout facilitates access to the drain line should blockage occur. The shallow side outlet roughs in where limited space is available and the large capacity bucket protects the drain line from debris. A flapper type backwater valve is optional for areas where backflow is anticipated.

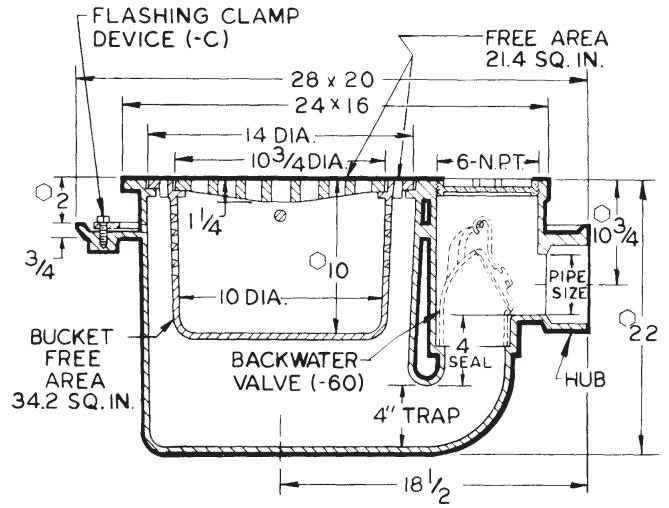
SPECIFICATION

JOSAM 38420 Series coated cast iron combination Floor Drain and integral deep seal trap with double drainage flange, weepholes, side outlet hub connection, round top, flush-with-floor cleanout and removable sediment bucket with integral auxiliary drainage rim designed so that medium-duty loose-set, NON-CLOG grate cannot be replaced unless bucket is in position.

Available Options

- ▼ -IGS Internal Gas Seal, 4" Size Only
- 1 Satin Finish Nikaloy Top
- 2 Satin Finish Bronze Top
- 15 Chained Grate
- VP Secured Grate, Vandal-Proof Screws
- C Bolted Flashing Clamp Device
- 60 Backwater Valve
- 84 Stainless Steel Mesh Bucket Liner
- 92 Galvanized Cast Iron Parts

SLOT WIDTH 1/2"



○ ADD 1/4" WHEN FURNISHED WITH NIKALOY OR BRONZE TOP.

TYPE NO.	PIPE SIZE	LBS.
38423	3	270
38424	4	270

38420-IGS SERIES with -IGS Internal Gas Seal

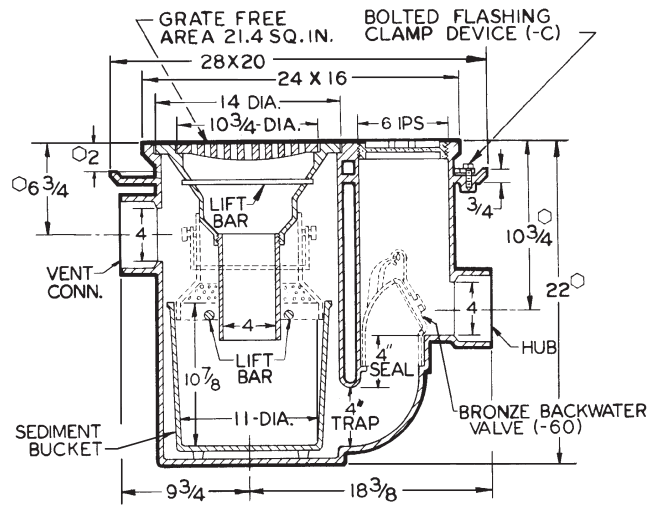
APPLICATION

For use in heavy traffic areas such as commercial garages and hangars where volatile liquids that could create an explosion or fire may be present. The integral deep seal trap, created by the funnel and solid bucket prevent gases from entering an occupied area. The vent expels gases before they can accumulate on top of liquid in the bucket. The flush-with-floor cleanout allows access to the drain line. A flapper type backwater valve is optional for areas where backflow is anticipated.

SPECIFICATION

JOSAM 38420-IGS Series coated cast iron combination extra deep Floor Drain and integral deep seal trap with double drainage flange, weepholes, side outlet and hub vent connection, round top, flush-with-floor cleanout, removable sediment bucket, funnel shaped internal seal with integral rim designed so that heavy-duty grate cannot be replaced unless funnel is in position.

SLOT WIDTH 1/2"



○ ADD 1/4" WHEN FURNISHED WITH NIKALOY OR BRONZE TOP.

TYPE NO.	PIPE SIZE	LBS.
38424-IGS	4	307

FLOOR DRAINS