

38850 SERIES 22" X 14" TOP, INTERNAL DOME STRAINER

APPLICATION

For use in heavy traffic areas, such as roadways, parking and trucking areas to handle both heavy traffic loads and a large volume of surface water. Internal dome strainer protects the waste line from debris.

SPECIFICATION

JOSAM 38850 Series coated cast iron Floor Drain, bottom outlet, inside caulk connection, 22" x 14" top, heavy-duty, loose-set grate and removable internal dome strainer.

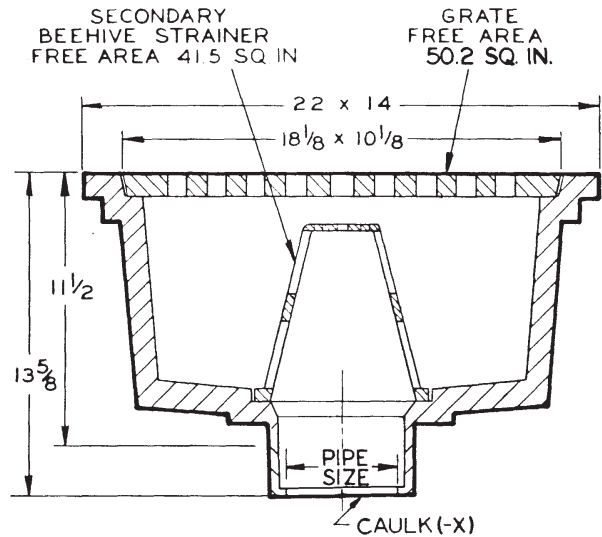
Available Options

- 7 Ductile Iron Grate
- 15 Chained Grate
- VP Secured Grate, Vandal-Proof Screws
- 92 Galvanized Cast Iron Parts

OUTLET:

- X Inside Caulk Outlet

SLOT WIDTH 13/16"



▲ 3" SIZE FURNISHED WITH 4" BODY WITH REDUCING BUSHING.

FOR OUTLET TYPE SPECIFY -X

TYPE NO.	PIPE SIZE	LBS.
38853	3▲	245
38854	4	245
38855	5	246
38856	6	247

38930 SERIES 21" X 14-1/2" TOP, CLEANOUT & BUCKET

APPLICATION

For use in heavy traffic areas such as packing houses where a shallow bottom outlet is desired. The integral trap protects against sewer gas and vermin and a floor level cleanout facilitates access to the drain line should blockage occur. The bucket protects the drain line from debris.

SPECIFICATION

JOSAM 38930 Series coated cast iron combination Floor Drain and integral trap with double drainage flange, weepholes, bottom outlet, inside caulk connection, 21" x 14-1/2" top, heavy-duty, loose-set grate, removable sediment bucket, and flush-with-floor cleanout.

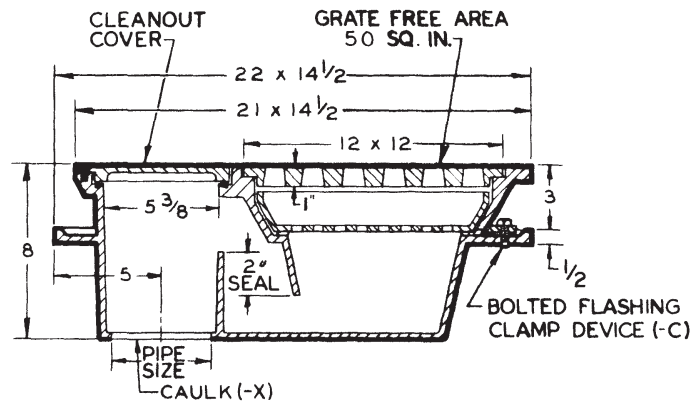
Available Options

- 7 Ductile Iron Grate
- 15 Chained Grate
- VP Secured Grate, Vandal-Proof Screws
- C Bolted Flashing Clamp Device
- 84 Stainless Steel Mesh Bucket Liner
- 92 Galvanized Cast Iron Parts

OUTLET:

- X Inside Caulk Outlet

SLOT WIDTH 7/8"



▲ 3" SIZE FURNISHED WITH 4" BODY WITH REDUCING BUSHING.

FOR OUTLET TYPE SPECIFY -X

TYPE NO.	PIPE SIZE	LBS.
38933	3▲	120
38934	4	120