

**60610A SERIES**

**DRAW-OFF TYPE**

**APPLICATION**

For use in large service stations, parking garages, car and truck washes and industrial plants where discharged water contains high volumes of waste laden with oil, sediment and other volatile liquids. Separator collects oil and conveniently permits the collected oil to be drained to a storage tank by means of an adjustable gravity draw-off connection. Sediment and debris are collected in a sediment bucket that can be periodically removed.

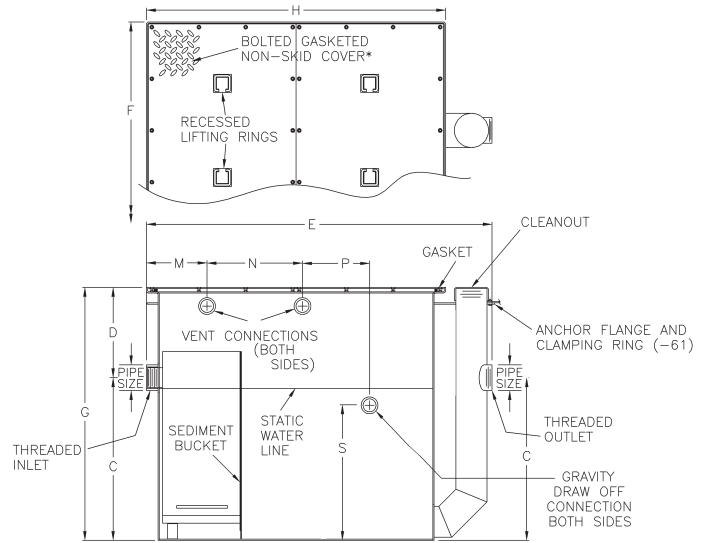
**SPECIFICATION**

JOSAM 60610A Series fabricated steel Oil Separator, epoxy coated inside and outside, high volume, threaded connections, visible double wall trap and sediment bucket, adjustable gravity draw-off either side, two vent connections on each side, gasketed non-skid cover and flow control fitting.

**Available Options**

- ▼ -EXT Extension, 6" Standard (Specify Extension Height)
- 60 Anchor Flange
- 61 Flange and Clamp Device
- HD Heavy-Duty Cover

TYPE NO.	FLOW RATE GPM	PIPE SIZE	ROUGH-IN CENTERS		LGTH. E	WIDTH F	HGT. G	COVER H	VENT & DRAW OFF ROUGH-IN				LBS.
			C	D					M	N	P	S	
60611A	75	3	21	6	46-1/4	31	27	41	8-1/4	12-1/2	10-1/4	13-1/2	450
60612A	100	4	23	8	54	35	31	47	9-1/2	14-1/2	12-1/2	15-1/4	575
60613A	150	4	27	8	60	39	35	53	10-1/2	16-1/2	14-1/2	19-1/4	750
60614A	200	5	31-1/2	10	67	42	41-1/2	58	11-1/2	18-1/8	16	26-1/4	1200
60615A	250	5	35-1/2	10	72	46	45-1/2	63	12-1/2	20-1/4	17-1/2	29-3/4	1475
60616A	350	6	39-1/2	12	80	52	51-1/2	71	13-1/2	23	19-3/4	34-1/4	1875
60617A	500	6	43-1/2	12	91	59	55-1/2	82	16	27	23	38-1/4	2575



\* 60611A, 60612A & 60613A ARE FURNISHED WITH ONE-PIECE COVER.

INTERCEPTORS

**60610A-EXT SERIES**

**with Extension**

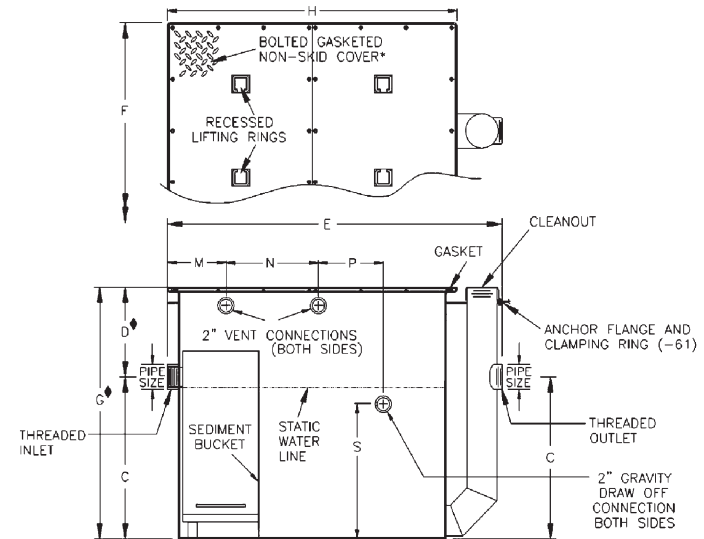
**APPLICATION**

For use in large service stations, parking garages, car and truck washes and industrial plants where discharged water contains high volumes of waste laden with oil, sediment and other volatile liquids. Separator collects oil and conveniently permits the collected oil to be drained to a storage tank by means of an adjustable gravity draw-off connection. Sediment and debris are collected in a sediment bucket that can be periodically removed. An extended top with fixed extension is supplied for installations requiring additional roughing depth from center of inlet and outlet to finished floor height.

**SPECIFICATION**

JOSAM 60610A-EXT Series fabricated steel Oil Separator, epoxy coated inside and outside, high volume, deep roughing, integral extension, threaded connections, visible double wall trap, sediment bucket, adjustable gravity draw-off either side, two vent connections on each side, gasketed non-skid cover and flow control fitting.

TYPE NO.	FLOW RATE GPM	PIPE SIZE	ROUGH-IN CENTERS		LGTH. E	WIDTH F	HGT. G♦	COVER H	VENT & DRAW OFF ROUGH-IN				LBS.
			C	D♦					M	N	P	S	
60611A-EXT	75	3	21	12	46-1/4	31	33	41	8-1/4	12-1/2	10-1/4	13-1/2	600
60612A-EXT	100	4	23	14	54	35	37	47	9-1/2	14-1/2	12-1/2	15-1/4	750
60613A-EXT	150	4	27	14	60	39	41	53	10-1/2	16-1/2	14-1/2	19-1/4	975
60614A-EXT	200	5	31-1/2	16	67	42	47-1/2	58	11-1/2	18-1/8	16	26-1/4	1200
60615A-EXT	250	5	35-1/2	16	72	46	51-1/2	63	12-1/2	20-1/4	17-1/2	29-3/4	1475
60616A-EXT	350	6	39-1/2	18	80	52	57-1/2	71	13-1/2	23	19-3/4	34-1/4	1875
60617A-EXT	500	6	43-1/2	18	91	59	61-1/2	82	16	27	23	38-1/4	2575



♦ DIMENSIONS BASED ON STD. 6" EXTENSION

\* 60611A-EXT, 60612A-EXT & 60613A-EXT ARE FURNISHED WITH ONE-PIECE COVER.