

60810 SERIES

OIL SEDIMENT INTERCEPTOR

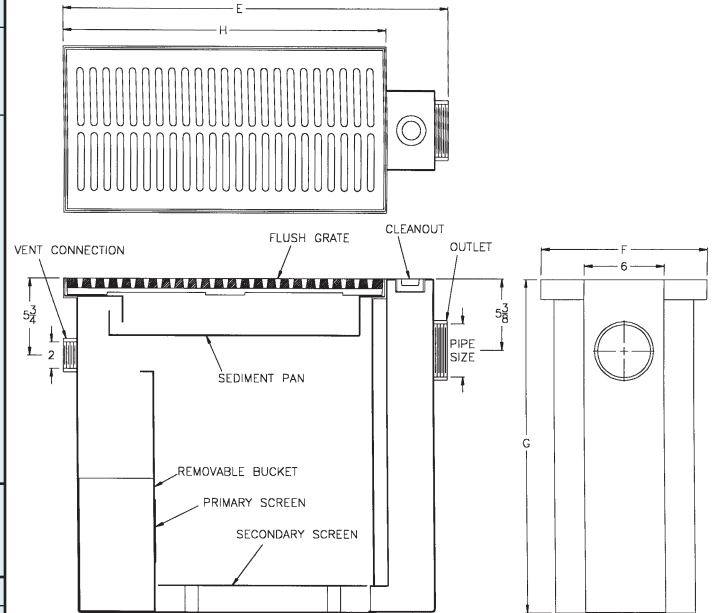
APPLICATION

For use in service stations, parking garages, car and truck washes and industrial plants where discharged water contains oil, sediment and other volatile liquids. Sediment and debris are collected in the sediment pan and removable bucket, which are accessible by removing the top grate. Oil and grease are trapped in the unit and may be skimmed off periodically.

SPECIFICATION

JOSAM 60810 Series steel Oil Sediment Interceptor with acid-resisting coating, threaded connection, flat bottom, visible double wall trap, removable sediment bucket, primary and secondary screens and medium-duty cast iron grate(s).

SLOT WIDTH 1/2"



INTERCEPTORS

TYPE NO.	PIPE SIZE	GRATE FREE AREA (SQ. IN.)	NO. OF GRATES	SLUDGE CAP (LBS.)	E	F	G	H	LBS.
60816	2	54	1	12	17-1/2	12-1/8	15	12-1/8	60
60817	4	112	1	60	29-7/8	12-1/2	25	24-1/2	175
60818	4	224	2	100	29-7/8	24-1/2	25	24-1/2	280
60819	4	336	3	200	41-7/8	24-1/2	35	36-1/2	360