

## 76500 & 76600 SERIES

## MEDIUM-DUTY, RECTANGULAR

### APPLICATION

For use in medium traffic areas where a concrete or similarly constructed trench with 1-1/4" recessed frame, by others, has been constructed for use with JOSAM grate only. May be used end-to-end for 12" wide trench as long as needed. 76501 includes single grate and frame, by JOSAM, 24-5/8" x 12-5/8". 76502 includes end-to-end grates and frame, by JOSAM. Frame and grate combination may be ordered to the necessary length to complete a continuous trench 12-5/8" wide. 76602 includes side-by-side grates and frame by JOSAM. Frame and grate combination may be ordered to the necessary length to complete a continuous trench 24-5/8" wide.

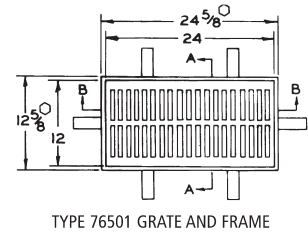
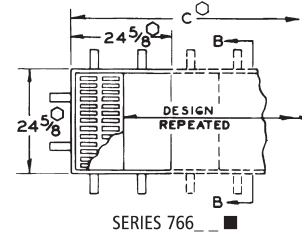
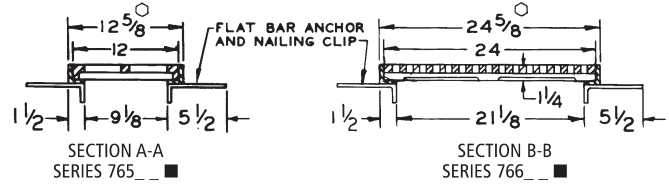
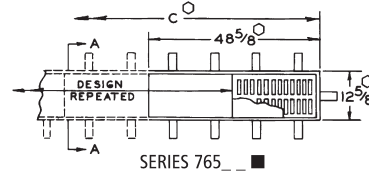
### SPECIFICATION

JOSAM 76500 and 76600 Series coated cast iron rectangular medium-duty sectional Trench Grate, 12" x 24" with 1/2" x 4-3/8" grate openings.

### Available Options

- 1 Satin Finish Nikaloy Grate, Stainless Steel Frame
- 7 Ductile Iron Grate
- 8-2 All Bronze with Satin Finish Top
- VP Secured Grate, Vandal-Proof Screws
- 40 Galvanized

SERIES NO.	TYPE NO.	DESCRIPTION	C	LBS.
76500	76500	Grate Only	24	40
76500	76501	Single Grate & Frame	24-5/8	57
76500	76502	2-Grate Section	48-5/8	108
76600	76602	2-Grate Section	24-5/8	103



GRATE SLOT OPENING 4-3/8" X 1/2"  
DIM. OF TRENCH IS "C" DIM. LESS 3"  
FREE AREA OF EACH GRATE IS 90 SQ. IN.

- DIM. GIVEN IS BACK-TO-BACK OF 1-1/2" x 1-1/2" x 1/4" ANGLE FRAME.
- LAST TWO DIGITS OF THESE SERIES INDICATE THE NUMBER OF GRATES.

## 76700 & 76800 SERIES

## HEAVY-DUTY, RECTANGULAR

### APPLICATION

For use in heavy traffic areas where a concrete or similarly constructed trench with 1-1/4" recessed frame, by others, has been constructed for use with JOSAM grate only. May be used end-to-end for 12" wide trench as long as needed. 76701 includes single grate and frame by JOSAM, 24-5/8" x 12-5/8". 76702 includes end-to-end grates and frame by JOSAM. Frame and grate combination may be ordered to the necessary length to complete a continuous trench 12-5/8" wide. 76802 includes side-by-side grates and frame by JOSAM. Frame and grate combination may be ordered to the necessary length to complete a continuous trench 24-5/8" wide.

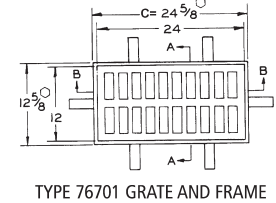
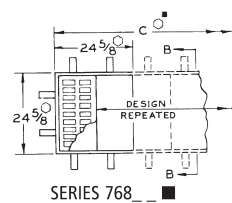
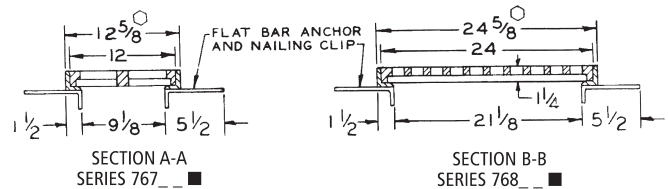
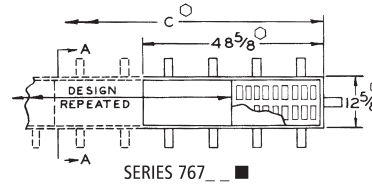
### SPECIFICATION

JOSAM 76700 and 76800 Series coated cast iron rectangular heavy-duty sectional Trench Grate, 12" x 24" with 1-1/2" x 4-1/4" grate openings.

### Available Options

- 1 Satin Finish Nikaloy Grate, Stainless Steel Frame
- 7 Ductile Iron Grate
- 8-2 All Bronze with Satin Finish Top
- VP Secured Grate, Vandal-Proof Screws
- 40 Galvanized

SERIES NO.	TYPE NO.	DESCRIPTION	C	LBS.
76700	76700	Grate Only	24	56
76700	76701	Single Grate & Frame	24-5/8	73
76700	76702	2-Grate Section	48-5/8	140
76800	76802	2-Grate Section	24-5/8	135



GRATE SLOT OPENING 4-1/4" X 1-1/2"  
DIM. OF TRENCH IS "C" DIM. LESS 3"  
FREE AREA OF EACH GRATE IS 100 SQ. IN.

- DIM. GIVEN IS BACK-TO-BACK OF 1-1/2" x 1-1/2" x 1/4" ANGLE FRAME.
- LAST TWO DIGITS OF THESE SERIES INDICATE THE NUMBER OF GRATES.