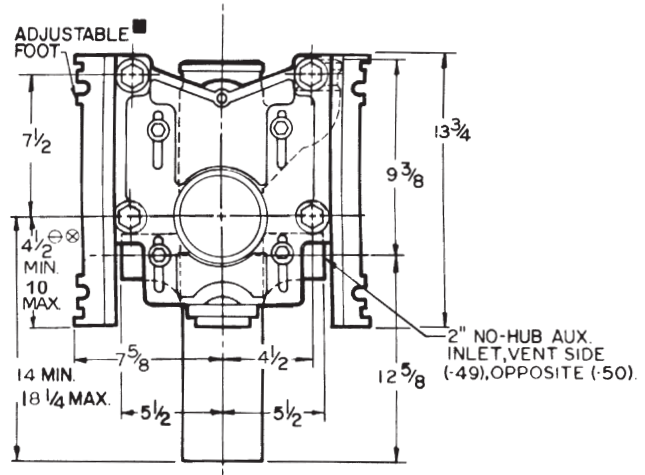
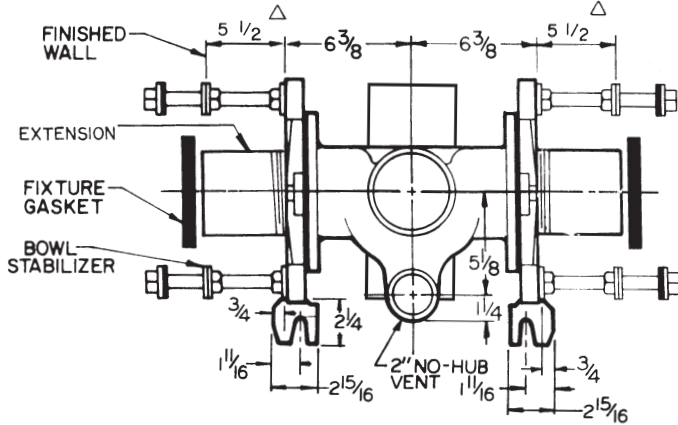


VERTICAL 4" NO-HUB, ADJUSTABLE, BACK-TO-BACK

12724

APPLICATION: For use with Siphon Jet or Blowout Closets in No-Hub piping systems where back-to-back adjustable fitting with vertical flow is desired.

Back-to-Back Fitting, On Stack, 2" Vent



117 LBS.

OPTIONS N/A: -HD4, -HVS4.

OPTIONS & NOTES

- | | | | |
|---------|--------------------------------|-------|--|
| -PF | Pylon Foot, Std. | -6 | Supply Pipe Support (Specify Type of Pipe) |
| -OR | O-Ring Carrier | -10 | ABS Extension, through 10-1/2" Wall |
| -SD | Special-Duty 500 lb. Carrier | -24 | Carrier for Floor-Mounted, Back-Outlet China Bowls |
| ▼ -HS | Hub & Spigot | -30 | Cast Iron Adjustable Extension with Connector |
| ▼ -D4 | Double 4" No-Hub Branches | -30-2 | Cast Iron Adjustable Extension with Connector and Test Cap |
| ▼ -HD4 | Double 4" Hub Branches | -32 | Carrier for Wide Chase Installations |
| ▼ -VS4 | Vent Side 4" No-Hub Branch | -35 | Closet Carrier for Wheelchair High Rough |
| ▼ -OS4 | Opposite Vent 4" No-Hub Branch | -49 | No-Hub High Auxiliary Inlet, Under Vent |
| ▼ -HVS4 | Vent Side 4" Hub Branch | -50 | No-Hub High Auxiliary Inlet, Opposite Vent |
| -VP | Vandal-Proof Trim | -53 | Threaded High Auxiliary Inlet, Under Vent |
| -1 | Positioning Frame | -54 | Threaded High Auxiliary Inlet, Opposite Vent |

■ RECOMMENDED ALL FEET BE SECURED TO FLOOR WITH 1/2" BOLTS AND ANCHORS BY OTHERS.

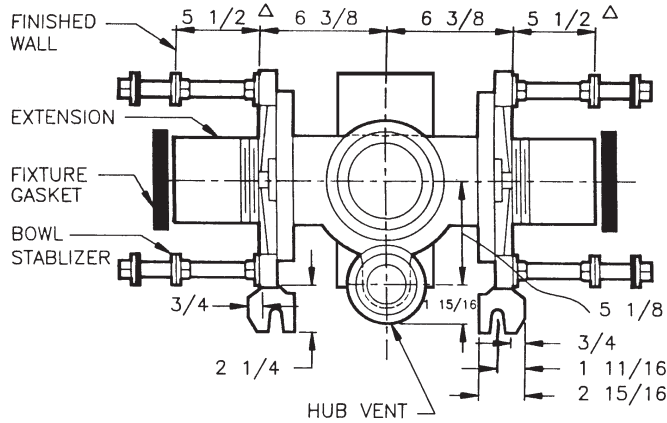
DIM. SHOWN IS FOR SIPHON JET. BLOWOUT IS: \ominus 11" MIN. & 16-1/2" MAX.

⊗ FOR ROUGHING OVER 6" FOR SIPHON JET OR 12-1/2" FOR BLOWOUT, SPECIFY ON ORDER.

△ FOR DIM. SHORTER THAN 5-1/2" (1" MIN.) CUT EXT. SPECIFY -10 FOR LONGER EXT. (10-1/2" MAX.)

12724-HS SERIES

Back-to-Back, 2" Vent

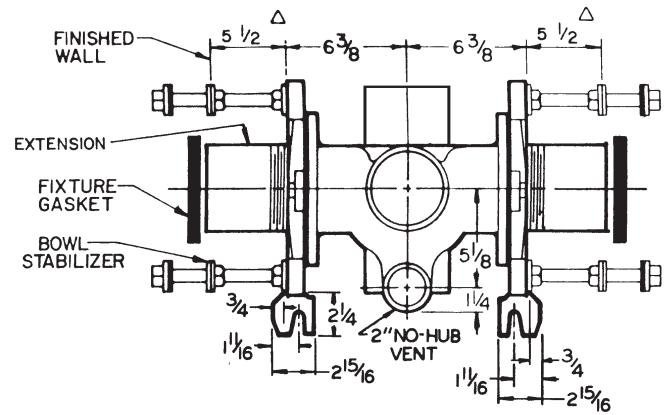


129 LBS.

OPTIONS N/A: -D4, -VS4, -OS4

12724-VS4 SERIES

Back-to-Back, 4" Branch, 2" Vent Same Side

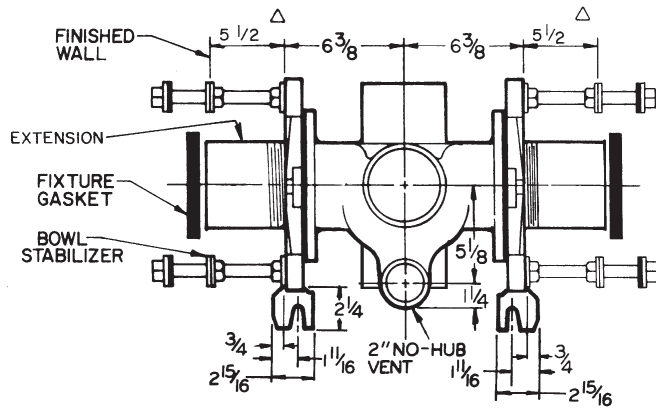


116 LBS.

OPTIONS N/A: -49, -53

12724-OS4 SERIES

Back-to-Back, 4" Branch, 2" Vent Opposite Side

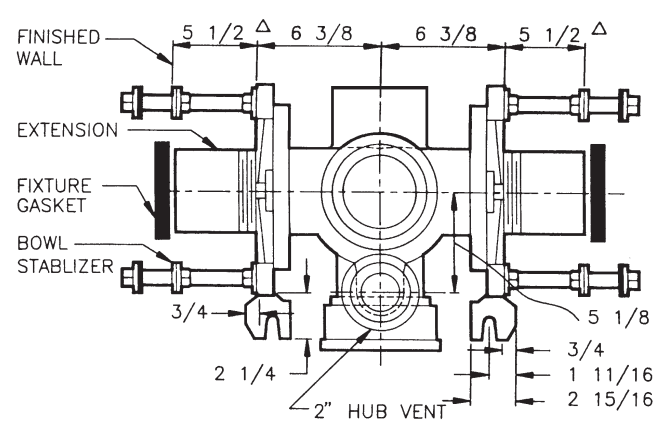


116 LBS.

OPTIONS N/A: -50, -54

12724-HS-HVS4 SERIES

Back-to-Back, Single Branch, 2" Vent

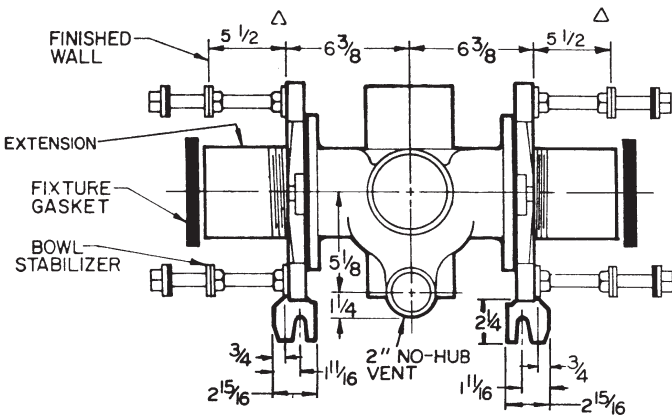


118 LBS.

OPTIONS N/A: -49, -53

12724-D4 SERIES

Back-to-Back, Two 4" Branches, 2" Vent

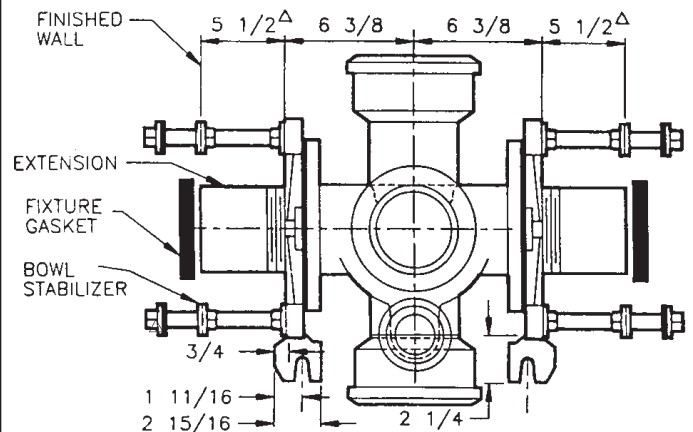


115 LBS.

OPTIONS N/A: -49, -50, -53, -54

12724-HS-HD4 SERIES

Back-to-Back, Two 4" Branches, 2" Vent



131 LBS.

OPTIONS N/A: -49, -50, -53, -54

△ FOR DIM. SHORTER THAN 5-1/2" (1" MIN.) CUT EXT. SPECIFY -10 FOR LONGER EXT. (10-1/2" MAX.)