

17550 SERIES

FLOOR-MOUNT, Hanger Plate Type

APPLICATION

For use with lavatories furnished with hangers that require a carrier for support and where thin wall construction demands uprights that support the fixture completely independent of the wall.

SPECIFICATION

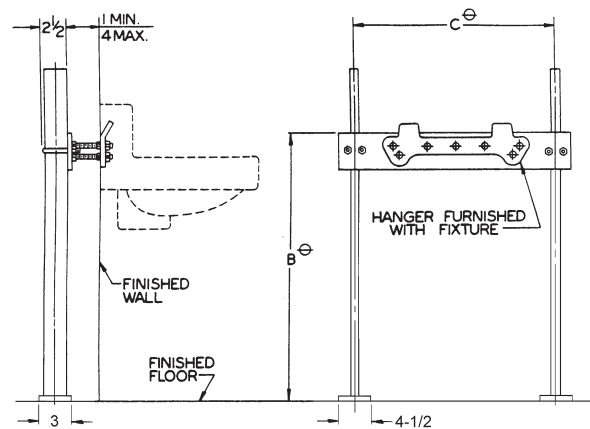
JOSAM 17550 Series floor-mounted, single Lavatory Carrier with hanger plate, adjustable supporting rods, structural uprights and welded feet.

Available Options

- ▼ -BB Back-to-Back Carrier -10 Hardware for Walls over 4", Specify Wall Thickness
- ▼ -CL Corner Lavatory Carrier
- ▼ -UR Urinal Carrier -60 Valve Plate for Attaching to Upright
- ▼ -WC Water Cooler Carrier
- ▼ -WCBL Water Cooler Bi-Level Carrier

⊖ VARIABLE – DEPENDS ON FIXTURE EXCEPT WHEN STD. PLATE IS FURNISHED. C=18-1/4".
RECOMMEND ALL FEET BE SECURED TO FLOOR WITH 1/2" BOLTS AND ANCHORS BY OTHERS.

REUSABLE ALIGNMENT TOOL AVAILABLE. SEE PAGE 45.



34 LBS

17550-BB SERIES

FLOOR-MOUNT, -BB Back-to-Back

APPLICATION

For use with back-to-back lavatories. Furnished with hangers that require a carrier for support and where thin wall construction demands uprights that support the fixture completely independent of the wall.

SPECIFICATION

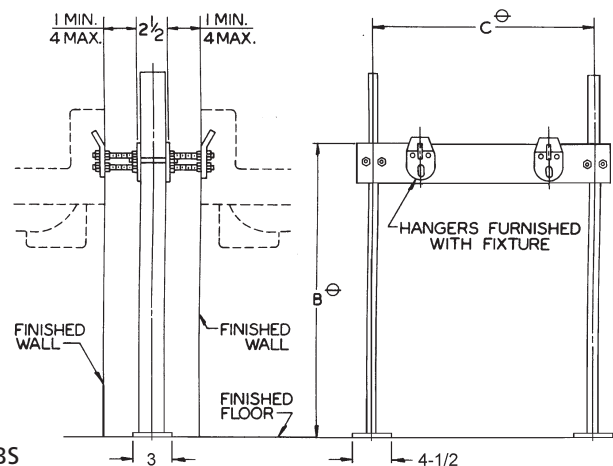
JOSAM 17550-BB Series floor-mounted, back-to-back Lavatory Carrier with hanger plates, adjustable supporting rods, structural uprights and welded feet.

OPTIONS N/A:

- CL, -UR, -WC, -WCBL

⊖ VARIABLE – DEPENDS ON FIXTURE EXCEPT WHEN STD. PLATE IS FURNISHED. C=18-1/4".
RECOMMEND ALL FEET BE SECURED TO FLOOR WITH 1/2" BOLTS AND ANCHORS BY OTHERS.

REUSABLE ALIGNMENT TOOL AVAILABLE. SEE PAGE 45.



34 LBS

17550-UR SERIES

FLOOR-MOUNT, -UR Urinal Carrier

APPLICATION

For use with urinals furnished with hangers that require a carrier for support and where thin wall construction demands uprights that support the fixture completely independent of the wall.

SPECIFICATION

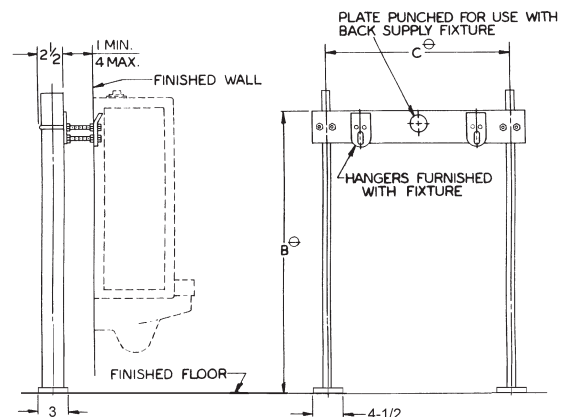
JOSAM 17550-UR Series floor-mounted single Urinal Carrier with hanger plate, adjustable supporting rods, structural uprights and welded feet.

OPTION N/A

- 60

⊖ VARIABLE – DEPENDS ON FIXTURE EXCEPT WHEN STD. PLATE IS FURNISHED. C=18-1/4".
RECOMMEND ALL FEET BE SECURED TO FLOOR WITH 1/2" BOLTS AND ANCHORS BY OTHERS.

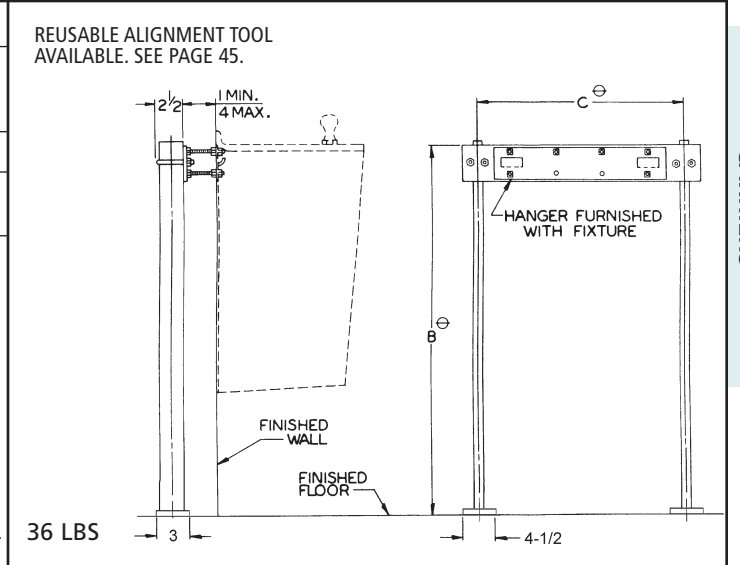
REUSABLE ALIGNMENT TOOL AVAILABLE. SEE PAGE 45.



32 LBS

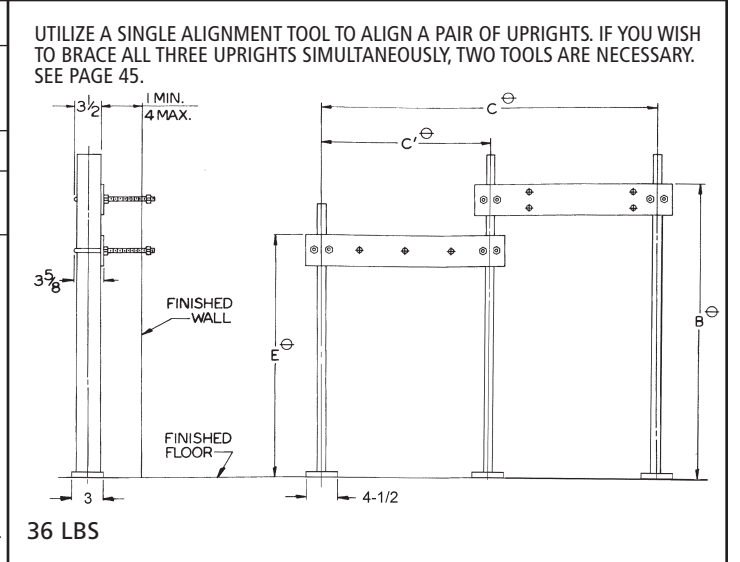
17550-WC SERIES FLOOR-MOUNT, -WC Water Cooler Carrier

APPLICATION
For use with water coolers furnished with hangers that require a carrier for support and where thin wall construction demands uprights that support the fixture completely independent of the wall.
SPECIFICATION
JOSAM 17550-WC Series floor-mounted single Water Cooler Carrier with hanger plate, adjustable supporting rods, structural uprights and welded feet.
OPTION N/A -60
⊖ VARIABLE – DEPENDS ON FIXTURE EXCEPT WHEN STD. PLATE IS FURNISHED. C=18-1/4". RECOMMEND ALL FEET BE SECURED TO FLOOR WITH 1/2" BOLTS AND ANCHORS BY OTHERS.



17550-WCBL SERIES FLOOR-MOUNT, -WCBL Water Cooler Bi-Level Carrier

APPLICATION
For use with bi-level water coolers furnished with hangers that require a carrier for support and where thin wall construction demands uprights that support the fixture completely independent of the wall.
SPECIFICATION
JOSAM 17550-WCBL Series floor-mounted bi-level Water Cooler Carrier with hanger plates and adjustable supporting rods, structural uprights and welded feet.
OPTION N/A -60
⊖ VARIABLE – DEPENDS ON FIXTURE. RECOMMEND ALL FEET BE SECURED TO FLOOR WITH 1/2" BOLTS AND ANCHORS BY OTHERS.



17550-CL SERIES FLOOR-MOUNT, -CL Corner Lavatory Carrier

APPLICATION
For use with corner lavatories furnished with hangers that require a carrier for support and where thin wall construction demands uprights that support the fixture completely independent of the wall.
SPECIFICATION
JOSAM 17550-CL Series floor-mounted single Lavatory Carrier for supporting corner type lavatories with hanger plates, adjustable supporting rods, structural uprights and welded feet.
⊖ VARIABLE – DEPENDS ON FIXTURE. RECOMMEND ALL FEET BE SECURED TO FLOOR WITH 1/2" BOLTS AND ANCHORS BY OTHERS.

