

## 17720 SERIES

## FLOOR-MOUNT, Heavy-Duty Type

### APPLICATION

For use with service sinks designed for heavy-duty exposed arms and hanger plate where thin wall construction demands uprights that support the fixture completely independent of the wall.

### SPECIFICATION

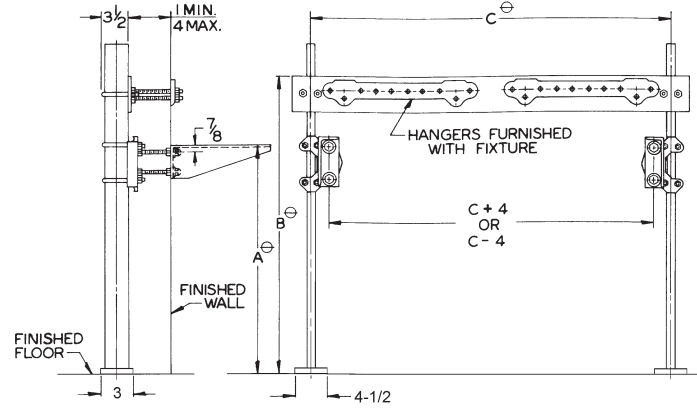
JOSAM 17720 Series floor-mounted, single, heavy-duty Sink Carrier with hanger plate, adjustable supporting rods, acid-resisting white coated arms, leveling and securing screws, structural uprights, welded feet and chrome-plated trim.

### Available Options

- VP Vandal-Proof Trim
- 10 Hardware for Walls over 4", Specify Wall Thickness
- ▼-66 Split Header for Stainless Steel Arms

⊖ VARIABLE – DEPENDS ON FIXTURE.

RECOMMEND ALL FEET BE SECURED TO FLOOR WITH 1/2" BOLTS AND ANCHORS BY OTHERS.



59 LBS

## 17720-66 SERIES FLOOR-MOUNT, with -66 Split Header for Stainless Steel Arms

### APPLICATION

For use with wash-up sinks designed for heavy-duty exposed arms and hanger plate where thin wall construction demands uprights that support the fixture completely independent of the wall.

### SPECIFICATION

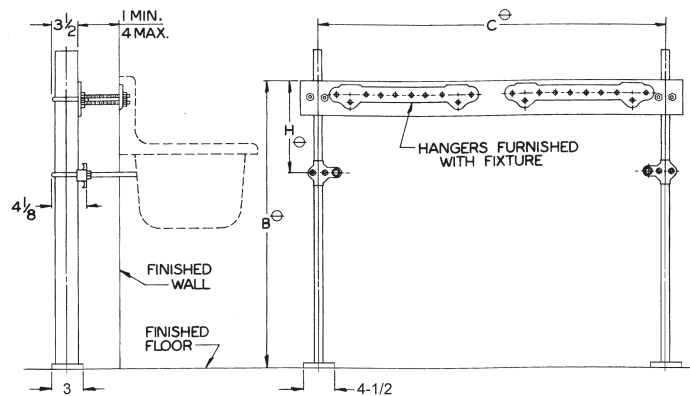
JOSAM 17720-66 Series floor-mounted, single, heavy-duty Sink Carrier with hanger plate, adjustable supporting rods and bearing studs, structural uprights, welded feet and chrome-plated trim.

### OPTION N/A:

- VP

⊖ VARIABLE – DEPENDS ON FIXTURE.

RECOMMEND ALL FEET BE SECURED TO FLOOR WITH 1/2" BOLTS AND ANCHORS BY OTHERS.



34 LBS