

## 23730 SERIES

## SMALL SUMP, Promenade Top

### APPLICATION

Used on smaller-sized promenade deck areas and roofs where foot traffic or light vehicles will be present. Smaller round grate set in a square frame provides ample free area for proper drainage and has narrow slotted openings for pedestrian safety and for the interception of debris. Flashing clamp holds the membrane or flashing securely to the drain body.

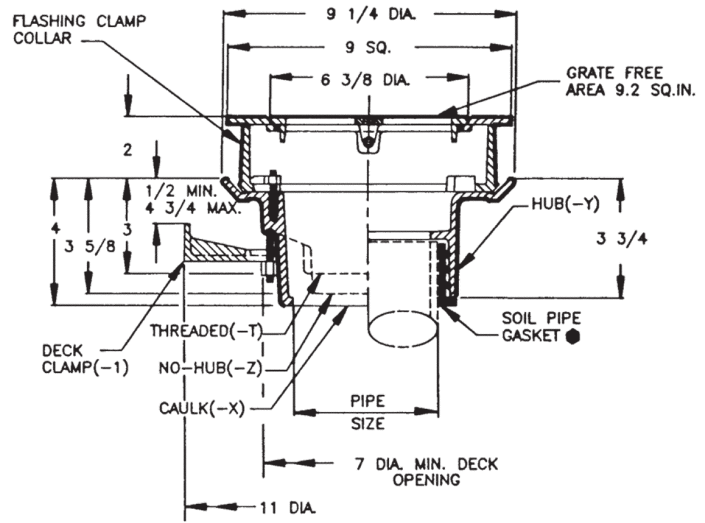
### SPECIFICATION

JOSAM 23730 Series coated cast iron Roof Drain, round pedestrian grate set in square secured frame, non-puncturing flashing collar with weepholes for 2" roof fill and small sump with wide roof flange and bottom outlet

### Available Options

- |   |  |
|---|--|
| -1 Deck Clamp Assembly  | -20 Galvanized Cast Iron Parts               |
| -1C Drain Receiver Clips (Min. Deck Opening 10.25" Dia.)          | -50 Satin Finish Nikaloy Top                 |
| -2 Drain Receiver   | -51 Satin Finish Bronze Top                  |
| -3 Deck Clamp Assembly and Drain Receiver                         | -VP Vandal-Proof Grate                       |
| -3C Drain Receiver and Drain Receiver Clips                       | <b>OUTLETS:</b>                              |
| -12 Extended Flashing Collar, Cast Iron, (Specify Height) 1" Std. | * -TSO Threaded Side Outlet                  |
| -12 -20 Extended Flashing Collar, Galv., (Specify Height) 1" Std. | -T Threaded Outlet                           |
|   | -X Inside Caulk Outlet                       |
|   | -Y Hub Outlet w/Gasket                       |
|   | -Z No-Hub Spigot Outlet                      |
|   | * <i>Cannot be used with Drain Receiver.</i> |

SLOT WIDTH 3/16"



● CONFORMS WITH ASTM-C564.

FOR OUTLET TYPE SPECIFY -T, -X, -Y or -Z

TYPE NO.	PIPE SIZE	LBS.
23732	2	18
23733	3	18
23734	4	18

## 23740 SERIES

## SMALL SUMP, Heavy-Duty Promenade Top

### APPLICATION

Used on smaller-sized promenade deck areas and roofs where foot traffic or vehicles will be present. Heavy-duty ductile iron undergrate with Nikaloy top accommodates pedestrian traffic and large vehicles. Square holes provide ample free area for proper drainage, pedestrian safety and the interception of debris. Flashing clamp holds the membrane or flashing securely to the drain body.

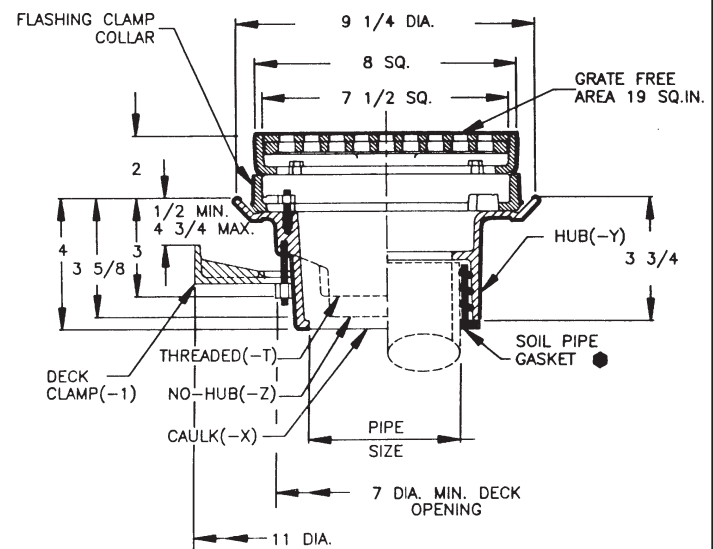
### SPECIFICATION

JOSAM 23740 Series coated cast iron Roof Drain, square heavy-duty ductile iron undergrate with Nikaloy top grate set in square secured frame, non-puncturing flashing collar with weepholes, for 2" roof fill and small sump with roof flange and bottom outlet.

### Available Options

- |   |  |
|---|--|
| -1 Deck Clamp Assembly  | -20 Galvanized Cast Iron Parts               |
| -1C Drain Receiver Clips (Min. Deck Opening 10.25" Dia.)          | -51 Satin Finish Bronze Top                  |
| -2 Drain Receiver   | -VP Vandal-Proof Grate                       |
| -3 Deck Clamp Assembly and Drain Receiver                         | <b>OUTLETS:</b>                              |
| -3C Drain Receiver and Drain Receiver Clips                       | * -TSO Threaded Side Outlet                  |
| -12 Extended Flashing Collar, Cast Iron, (Specify Height) 1" Std. | -T Threaded Outlet                           |
| -12 -20 Extended Flashing Collar, Galv., (Specify Height) 1" Std. | -X Inside Caulk Outlet                       |
|   | -Y Hub Outlet w/Gasket                       |
|   | -Z No-Hub Spigot Outlet                      |
|   | * <i>Cannot be used with Drain Receiver.</i> |

7/16" SQ. HOLES



● CONFORMS WITH ASTM-C564.

FOR OUTLET TYPE SPECIFY -T, -X, -Y or -Z

TYPE NO.	PIPE SIZE	LBS.
23742	2	18
23743	3	18
23744	4	18