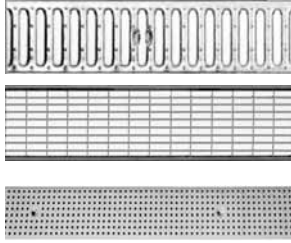


MEADRAIN® Top

S1000 Grate Options

Width: 4.8"

Locking System: Lock bar



Loading class A



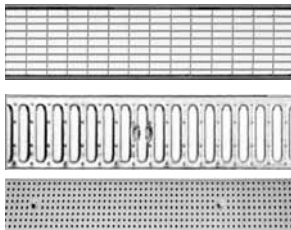
| product description | material | length [inches] | product # | Inlet sectional area [in ²] | lbs/unit |
|---------------------------------|-----------------|-----------------|-----------|---|----------|
| slotted grating | stainless steel | 39.4 | 152201 | 43.4 | 5.1 |
| slotted grating | stainless steel | 19.7 | 152206 | 21.7 | 2.7 |
| mesh grating 1.25/0.375 mesh | stainless steel | 39.4 | 152901 | 122.5 | 4.9 |
| mesh grating 1.25/0.375 mesh | stainless steel | 19.7 | 152906 | 61.2 | 2.7 |
| perforated grating | stainless steel | 39.4 | 152205 | 37.6 | 3.8 |
| perforated grating | stainless steel | 19.7 | 152207 | 18.8 | 2.0 |

Loading class B



| product description | material | length [inches] | product # | Inlet sectional area [in ²] | lbs/unit |
|------------------------------|-------------|-----------------|-----------|---|----------|
| mesh grating 1.25/0.375 mesh | galv. steel | 39.4 | 152303 | 122.5 | 6.8 |
| mesh grating 1.25/0.375 mesh | galv. steel | 19.7 | 152308 | 61.5 | 3.5 |

Loading class C



| product description | material | length [inches] | product # | Inlet sectional area [in ²] | lbs/unit |
|---------------------------------|-----------------|-----------------|-----------|---|----------|
| mesh grating 1.25/0.375 mesh | stainless steel | 39.4 | 152513 | 122.5 | 9.9 |
| mesh grating 1.25/0.375 mesh | stainless steel | 19.7 | 152518 | 61.2 | 5.1 |
| slotted grating | stainless steel | 39.4 | 152755 | 43.4 | 11.5 |
| slotted grating | stainless steel | 19.7 | 152757 | 21.7 | 5.7 |
| perforated grating | stainless steel | 39.4 | 152781 | 37.6 | 11.9 |
| perforated grating | stainless steel | 19.7 | 152785 | 18.8 | 6.0 |

Loading class E



| product description | material | length [inches] | product # | Inlet sectional area [in ²] | lbs/unit |
|---------------------|--------------|-----------------|-----------|---|----------|
| slotted grating | ductile iron | 19.7 | 152613 | 30.2 | 11.5 |

Locking mechanism



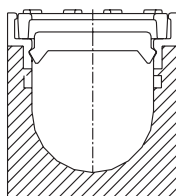
| product description | material | product # | lbs/unit |
|---|-----------------|-----------|----------|
| locking mechanism for slotted gratings | stainless steel | 152211 | 0.4 |
| locking mechanism for mesh and perforated grating | stainless steel | 152531 | 0.4 |

Note

For additional grate options, please see page 50.

2 locking mechanisms per 39.4 inches required.

WARNING: Cancer and Reproductive Harm - www.p65warnings.ca.gov



CLIPFIX

STANDARD: Consists of a locking bar which fits in pre-formed recess in channel wall and stainless steel bolt (slotted or hex depending on grate type) which draws the grate to the bar. Available on all MEADRAIN Products.