





# MEADRAIN® Supreme



## EN1000

Clear Width: 4" interior  
 Total Width: 5.5"  
 Fall Options: Available with built in fall or neutral  
 Locking System: PROFIX  
 Outlet: 4" bottom or end outlet connection  
 Load Class: A, B, C, D, E, F

### Channel units with linear fall (fall 0.5%)



product description	length [inches]	total height [inches]		product #	lbs/ unit
		start	end		
EN1001	39.4	5.9	6.1	157207	37.7
EN1002	39.4	6.1	6.3	157209	37.7
EN1003	39.4	6.3	6.5	157211	38.8
EN1004	39.4	6.5	6.7	157213	38.8
EN1005 <sup>1)</sup>	39.4	6.7	6.9	157215	39.9
EN1006	39.4	6.9	7.1	157225	42.1
EN1007	39.4	7.1	7.3	157227	42.1
EN1008	39.4	7.3	7.5	157229	43.2
EN1009	39.4	7.5	7.7	157231	43.2
EN1010 <sup>1)</sup>	39.4	7.7	7.9	157233	44.3
EN1011	39.4	7.9	8.1	157243	46.5
EN1012	39.4	8.1	8.3	157245	46.5
EN1013	39.4	8.3	8.5	157247	47.6
EN1014	39.4	8.5	8.7	157249	47.6
EN1015 <sup>1)</sup>	39.4	8.7	8.9	157251	48.7
EN1016	39.4	8.9	9.1	157261	50.9
EN1017	39.4	9.1	9.2	157263	50.9
EN1018	39.4	9.2	9.5	157265	52.0
EN1019	39.4	9.5	9.7	157267	52.0
EN1020 <sup>1)</sup>	39.4	9.7	9.8	157269	53.1

<sup>1)</sup> With connection facility for vertical discharge outlet connector  
 Ø 4" or silt box/gully

**⚠ WARNING: Cancer and Reproductive Harm - [www.p65warnings.ca.gov](http://www.p65warnings.ca.gov)**

### Note

**PROFIX:** Recesses in channel edge accepts grate with pre-attached 4-point spring steel locking mechanism to ensure positive locking of grate to channel. Removal of grate provides an unobstructed channel cross section for simple cleaning. Available on all EN1000, EN1500, EN2000 & EN3000 series channels.

### Applications

#### Manufacturing Facility

- Integral Cast iron protected edge designed to withstand extreme loads
- Built in PROFIX locking recess ensures positive grate securement

#### Fire Station

- Exterior lateral ribs "lock" channel into surrounding concrete
- PROFIX grate/lock assembly allows uninterrupted channel access during cleaning



## EN1000 Accessories

### Silt Box



Total Width: 5.5"  
Material: Polymer Concrete  
Edge protection: Integrated cast iron edge

product description	length [inches]	total height [inches]	product #	lbs/ unit
EN 1000.EK	19.7	23.0	157291	67.2

For large gully, see page 33.

### End Caps



Total Width: 5.5"  
Material: Polymer Concrete  
Edge protection: Integrated cast iron edge

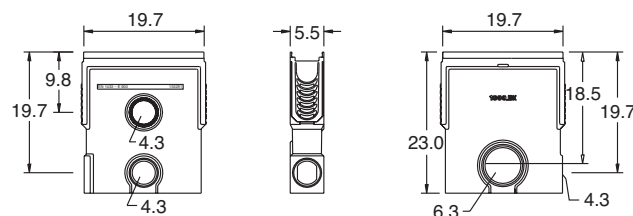
product description	product #	lbs/ unit
EN 1000.SE for channel start/end	153371	2.9
EN 1000.E for channel end with HD-PE outlet connector Ø 4" with sealing ring. Suitable for channel EN1000	153373	2.4
EN 1005.E for channel end with HD-PE outlet connector Ø 4" with sealing ring. Suitable for channel EN1005	153375	2.9
EN 1010.E for channel end with HD-PE outlet connector Ø 4" with sealing ring. Suitable for channel EN1010	153377	3.5
EN 1015.E for channel end with HD-PE outlet connector Ø 4" with sealing ring. Suitable for channel EN1015	153379	4.0
EN 1020.E for channel end with HD-PE outlet connector Ø 4" with sealing ring. Suitable for channel EN1020	153381	4.4
EN 1000.RWH for change at channel run high point, suitable for all channels EN1000.0 - EN1020.0	153383	2.9
EN 1015.RWT for change at channel run low point, suitable for channel EN1015	153385	2.4
EN 1020.RWT for change at channel run low point, suitable for channel EN1020	153387	2.4
EN 1000.UE for connecting elements EN1020.0 and EN1030.0	153391	0.7
1000 outlet bracket	150900	3.0
1000 extension bracket	150920	3.2



Outlet lip sealing ring for water-tight channel runs  
Suitable for all silt boxes and gullies

product description	product #	lbs/ unit
sealing ring Ø 4"	153883	0.1
sealing ring Ø 6"	153885	0.1

**⚠ WARNING: Cancer and Reproductive Harm - [www.p65warnings.ca.gov](http://www.p65warnings.ca.gov)**



# MEADRAIN® Top

## EN1000 Grate Options

Total Width: 4.8"

Locking System: PROFIX/CLIPFIX



### Loading class C with CLIPFIX



product description	material	length [inches]	product #	Inlet sectional area [in <sup>2</sup> ]	lbs/unit
slotted grating 0.4/3.54 slots	ductile iron	19.7	152403	27.1	7.0
slotted grating 0.2/3.54 slots	ductile iron	19.7	152405	13.5	7.7
mesh grating 0.8/0.4 mesh	galv. steel	39.4	152603	120.0	11.0
mesh grating 0.8/0.4 mesh	galv. steel	19.7	152608	60.0	5.7
slotted grating	galv. steel	39.4	152713	43.4	12.1
slotted grating	galv. steel	19.7	152718	21.7	6.2
solid cover	ductile iron	19.7	152720	-	11.9



### Loading class D with PROFIX



product description	material	length [inches]	product #	Inlet sectional area [in <sup>2</sup> ]	lbs/unit
slotted grating 0.47/4 slots	ductile iron	19.7	152521	31.0	9.5
ductile iron mesh grating cover wave	ductile iron	19.7	152524	42.3	8.4



### Loading class E with PROFIX



product description	material	length [inches]	product #	Inlet sectional area [in <sup>2</sup> ]	lbs/unit
slotted grating 0.47/4 slots	ductile iron	19.7	152523	31.0	9.5



### Loading class F with PROFIX

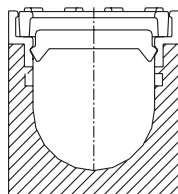


product description	material	length [inches]	product #	Inlet sectional area [in <sup>2</sup> ]	lbs/unit
slotted grating 0.47/3.78 slots	ductile iron	19.7	153095	30.7	11.0

Note

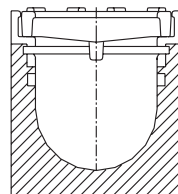
**⚠ WARNING: Cancer and Reproductive Harm - [www.p65warnings.ca.gov](http://www.p65warnings.ca.gov)**

All other CLIPFIX and STANDARD grating covers possible with clear width 4 inches. For bolted gratings, see page 35. For additional grate options, please see page 50.



CLIPFIX

**CLIPFIX:** Recesses in channel edge accepts grate with pre-attached lock device to ensure positive locking of grate to channel. Removal of grate provides an unobstructed channel cross section for simple cleaning. Available on J1000 and S1000.



PROFIX

**PROFIX:** Recesses in channel edge accepts grate with pre-attached 4-point spring steel locking mechanism to ensure positive locking of grate to channel. Removal of grate provides an unobstructed channel cross section for simple cleaning. Available on all EN1000, EN15000, EN2000, and EN3000 series channels.

All units in inches unless otherwise noted.