

MEADRAIN® Supreme



EN1500 Accessories

Gully



Clear Width: 6"
 Total Width: 7.8"
 Material: Polymer Concrete
 Edge protection: Integrated cast iron edge protection

product description	length [inches]	total height [inches]	product #	lbs/unit
SK-OT EN1500 upper gully opened both sides for lower channel heights	19.7	15.3	157141	57.5
SK-ZT middle gully section to increase total height	20.6	13.4	154709	48.5
SK-UT-short lower gully short section with preformed knockouts for connectors Ø 6 ¹ / ₈ "	20.6	12.2	154711	52.9
SK-UT-long lower gully long section with preformed knockouts for connectors Ø 6 ¹ / ₈ "	20.6	18.1	154719	74.1
galvanized steel sediment bucket			151846	5.5

¹⁾ Waterproof connection possible when used in combination with Ø 6" lip sealing ring

End Caps



Width: 7.8"
 Material: Polymer Concrete
 Edge protection: Integrated cast iron edge protection

product description	product #	lbs/unit
EN1500.SE for channel start/end	153143	6.0

For channel end with integrated HD-PE outlet connector Ø 6"
 with sealing ring

product description	product #	lbs/unit
EN1500.E suitable for channel EN1500	153145	4.0
EN1510.E suitable for channel EN1510	153147	5.5
EN1520.E suitable for channel EN1520	153149	6.2
EN1500.RWH for change at channel run high point suitable for all channel heights	153151	6.0

Outlet lip sealing ring for water-tight channel runs
 Suitable for all silt-boxes and gullies

product description	product #	lbs/unit
sealing ring Ø 6"	153885	0.9

Applications

Parking Areas

- 6" interior channel width accepts larger volume run off, increases storage capacity during peak rainfall
- PRO-FIX locking mechanism prevents grate movement

Bus Stations

- Utilization of step fall channels create waterfall effect to promote channel cleansing water flow
- PRO-FIX grating provides a secure grating surface that can be easily detached for removal of sand/silt

MEADRAIN® Supreme

EN1500 Grate Options

Width: 6.8"

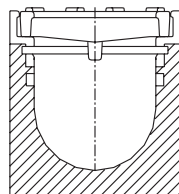
Locking System: Non-bolted PROFIX



product description	length [inches]	product #	inlet sectional area [in ²]	length	lbs/ unit	
slotted ductile iron grating C 250	19.7	153153	48.5	4.9	14.1	
slotted ductile iron grating D 400*	19.7	153155	48.5	4.9	14.3	
mesh ductile iron grating Wave D 400*	19.7	153156	59.7	-	14.8	
ductile iron solid cover D 400*	19.7	153157	-	-	17.9	
slotted ductile iron grating F 900	19.7	151171	47.6	4.7	22.0	

Note

For bolted gratings, see page 35



PROFIX

PROFIX: Recesses in channel edge accepts grate with pre-attached 4-point spring steel locking mechanism to ensure positive locking of grate to channel. Removal of grate provides an unobstructed channel cross section for simple cleaning. Available on all EN1000, EN15000, EN2000, and EN3000 series channels.