

MEADRAIN® Supreme



EN2000 Accessories

Silt Box



Clear Width: 8" interior
 Total Width: 9.5"
 Material: Polymer Concrete
 Edge protection: Integrated cast iron edge protection

product description	length [inches]	total height [inches]	product #	lbs/ unit
SK-OT upper gully opened both sides for lower channel heights	19.7	16.9	157549	5.5
SK-ZT middle gully section to increase total height	20.6	13.4	154709	48.5
SK-UT-short lower gully short section with preformed knockouts for connectors Ø 6"¹/8"	20.6	12.2	154711	53.0
SK-UT-long lower gully long section with preformed knockouts for connectors Ø 6"¹/8"	20.6	18.1	154719	74.1
galvanized steel sediment bucket			154717	5.5

¹ Waterproof connection possible when used in combination with Ø 6" lip sealing ring (see EN1000 accessories)

End Caps

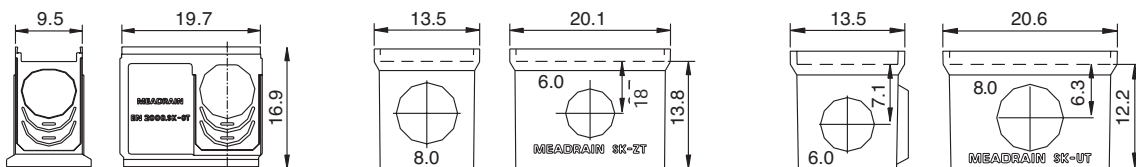


Width: 9.5"
 Material: Polymer Concrete
 Edge protection: Integrated cast iron edge protection

product description	product #	lbs/ unit
EN 2000.SE for channel start/end	153551	8.2
EN 2000.E for channel end with HD-PE outlet connector Ø 6" with sealing ring. Suitable for channel EN2000	153553	6.2
EN 2010.E for channel end with HD-PE outlet connector Ø 6" with sealing ring. Suitable for channel EN2010	153555	7.3
EN 2020.E for channel end with HD-PE outlet connector Ø 6" with sealing ring. Suitable for channel EN2020	153557	8.6
EN 2000.RWH for change at channel run high point	153559	6.2

PVC outlet connector**

product description	product #	lbs/ unit
connector Ø 6"	154503	0.9
connector Ø 8"	154316	1.3



EN 2000.SK OT

EN 2000.SK ZT

EN 2000.SK UT

MEADRAIN® Supreme



EN2000 Grate Options

Width: 8.8"

Locking System: Non-bolted PROFIX

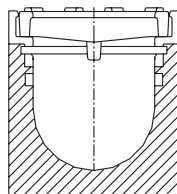


Loading class A - F
With non-bolted PROFIX grating cover securement

product description	length [inches]	product #	inlet sectional area [in ²]	slots length [inches]	lbs/ unit	
slotted ductile iron grating C 250	19.7	153561	83.4	7.1	15.4	
slotted ductile iron grating D 400*	19.7	153563	83.4	7.1	20.1	
ductile iron solid cover D 400*	19.7	153567	-	-	20.9	
mesh ductile iron grating E 600 Wave	19.7	153565	77.8	-	24.0	
slotted ductile iron grating F 900	19.7	154239	78.8	6.7	33.7	

Note

For bolted gratings, see page 35



PROFIX

PRO-FIX: Recesses in channel edge accepts grate with pre-attached 4-point spring steel locking mechanism to ensure positive locking of grate to channel. Removal of grate provides an unobstructed channel cross section for simple cleaning. Available on all EN1000, EN1500, EN2000 & EN3000 series channels.