

# MEADRAIN® Solution



## SL1000 Monolithic Channel Units

Clear width: 4" interior  
 Total Width: 5.3"  
 Slot width: 0.6"  
 Fall Options: Available without fall  
 Load Class: A, B, C



Channel units without fall

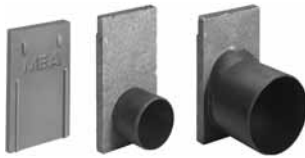
product description	length [inches]	total height [inches]	product #	lbs/ unit
SL1000.0 <sup>1) 2)</sup>	39.4	5.8	153351	41.7

<sup>1)</sup> Channel unit with preformed knock out for vertical discharge Ø 4"

<sup>2)</sup> Channel unit with preformed knock out for horizontal discharge Ø 4" and connecting facility for corner and cross junction

## SL1000 Accessories

### End Caps



End caps of polymer concrete

product description	product #	lbs/ unit
SL1000.SE end cap for channel start/end	153361	2.9
SL1000.E end cap for channel end with PVC outlet Ø 4"	153363	1.8
pvc outlet connector Ø 4"	154501	0.4

### Applications

#### Sports Track

- Integral slot eliminates the need for grate
- All polymer concrete construction ensures uniform appearance

#### Detention Facilities

- Tamper free drainage
- Secure opening without special fasteners