

# MEADRAIN® Select

## MEARIN 100 Accessories

### Corner Unit



Bend: 90 degree

product description	dimension l x w [in]	product #	lbs/ unit
corner unit	20.0 x 24.8	143050	6.6

### Trap Set



Outlet Connector: 4 inches Ø  
Includes: Odor seal, 2 end caps and bolts

product description	product #	lbs/ unit
PVC connector Ø 4"	141400	0.7

### End Cap



Material: Polyethylene

product description	cross-section Ø [in]	product #	lbs/ unit
end cap	2.8	141350	0.1

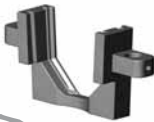
Locking mechanism for MEARIN 100

product description	product #	lbs/ unit
with stainless steel bolts mesh, perf, plastic	141465	0.4
with stainless steel bolts for slotted and ductile iron gratings*	141460	0.2

\* 1 bolt/per 19.7 inches

## New Bracket for installation

### Bracket



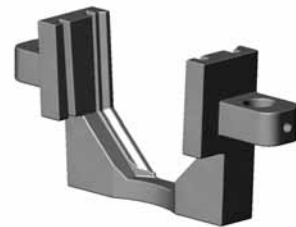
Material:

product description	product #	lbs/ unit
channel support bracket	141100	1



1. Arrange channels in a straight line, open side down.
2. Position each section allowing tongue and groove ends to overlap
3. Using the exterior ribs of the channel as a guide, insert bracket over channel overlap.
4. Push bracket down until it seats against bottom of channel. (If the bottom outlet knockout isn't completely visible, remove bracket and rotate 180 degrees.
5. Repeat this process for all channel joints.
6. Insert additional bracket near each end of the completed TD
7. Position the assembled trench drain open side up.
8. Insert rebar stakes thru holes on each side of bracket, bring to level and tighten set screws.

Please see page 53 for remaining instructions.



Part #141100

