

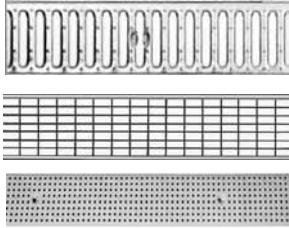
MEADRAIN® Top

J1000 Grate Options

Clear Width: 4.8"

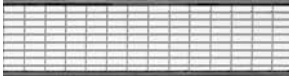
Locking System: STANDARD lock bar

Loading class A



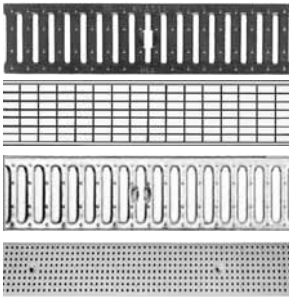
product description	material	length [inches]	product #	Inlet sectional area [in ²]	lbs/unit
slotted grating	galv. steel	39.4	152101	43.4	5.1
slotted grating	galv. steel	19.7	152106	21.7	2.7
mesh grating 1.25/0.375 mesh	galv. steel	39.4	152801	122.5	4.9
mesh grating 1.25/0.375 mesh	galv. steel	19.7	152806	61.2	2.7
perforated grating	galv. steel	39.4	152105	37.6	3.8
perforated grating	galv. steel	19.7	152107	18.8	2.0

Loading class B



product description	material	length [inches]	product #	Inlet sectional area [in ²]	lbs/unit
mesh grating 1.25/0.375 mesh	galv. steel	39.4	152301	122.5	6.6
mesh grating 1.25/0.375 mesh	galv. steel	19.7	152306	61.2	3.1

Loading class C



product description	material	length [inches]	product #	Inlet sectional area [in ²]	lbs/unit
slotted grating 0.5 slots	ductile iron	19.7	152411	27.1	7.0
slotted grating 0.25 slots	ductile iron	19.7	152541	13.5	7.7
mesh grating 0.8/0.4 mesh	galv. steel	39.4	152503	122.5	10.8
mesh grating 0.8/0.4 mesh	galv. steel	19.7	152508	61.2	5.7
slotted grating	galv. steel	39.4	152711	43.4	11.9
slotted grating	galv. steel	19.7	152731	21.7	5.9
perforated grating	galv. steel	39.4	152771	37.6	11.0
perforated grating	galv. steel	19.7	152775	18.4	5.1

Loading class E



product description	material	length [inches]	product #	Inlet sectional area [in ²]	lbs/unit
slotted grating 0.5 slots	ductile iron	19.7	152611	30.2	11.0
slotted grating 0.2 slots	ductile iron	19.7	152761	14.5	11.5

Locking mechanism



product description	material	product #	lbs/unit
locking mechanism for slotted gratings	galv. steel	152116	0.4
locking mechanism for mesh & perforated grating	galv. steel	152311	0.4

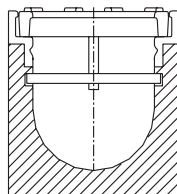
For Optimal performance, use locking mechanism for load class C and above



Note

For additional grate options, please see page 50.

⚠ WARNING: Cancer and Reproductive Harm - www.p65warnings.ca.gov



STANDARD

STANDARD: Consists of a locking bar which fits in pre-formed recess in channel wall and stainless steel bolt (slotted or hex depending on grate type) which draws the grate to the bar. Available on all MEADRAIN Products.