

# MEADRAIN® Supreme



Material: Polymer concrete

**S1000**

Lock: STANDARD lock bar, CLIPFIX

Edge Protection: Stainless steel

Accessories: Catchbasins

Solid & outlet end caps

Installation brackets

Chair bracket

**WARNING:** Cancer and Reproductive Harm - [www.p65warnings.ca.gov](http://www.p65warnings.ca.gov)

# MEADRAIN® Supreme



## S1000

Clear Width: 4" interior  
 Total Width: 5.1"  
 Edge protection: Integrated stainless steel edge protection  
 Fall Options: Available with built in fall, neutral or stepped fall  
 Locking System: CLIPFIX or STANDARD  
 Outlet: 4" bottom or end outlet  
 Load Class: A, B, C, E



### Channel units without fall

product description	length [inches]	total height [inches]	product #	lbs/ unit
S1000.0 <sup>1)</sup>	39.4	5.9	151601	29.8
S1000.1	19.7	5.9	151603	15.4
S1005.0 <sup>1)</sup>	39.4	6.9	151615	34.2
S1005.1 <sup>1)2)</sup>	19.7	6.9	151617	18.7
S1010.0 <sup>1)</sup>	39.4	7.9	151629	37.9
S1010.1 <sup>1)2)</sup>	19.7	7.9	151631	22.0
S1015.0 <sup>1)</sup>	39.4	8.9	151643	43.0
S1015.1 <sup>1)2)</sup>	19.7	8.9	151645	25.3
S1020.0 <sup>1)</sup>	39.4	9.8	151657	47.8
S1020.1 <sup>1)2)</sup>	19.7	9.8	151659	27.6

<sup>1)</sup> With connection facility for vertical discharge outlet connector Ø 4" or silt box/gully

<sup>2)</sup> Connecting facility for corner and cross junction

### Channel units for stepped fall

As connecting elements for stepped fall (with 2.5% fall).

product description	length [inches]	total height [inches]	product #	lbs/ unit	
		start	end		
S1000-5	39.4	5.9	6.9	151661	32.2
S1005-10	39.4	6.9	7.9	151663	35.9
S1010-15	39.4	7.9	8.9	151665	39.9
S1015-20	39.4	8.9	9.8	151667	45.5

**⚠ WARNING: Cancer and Reproductive Harm - [www.p65warnings.ca.gov](http://www.p65warnings.ca.gov)**

#### Note

For installation of stepped fall with neutral channels S1000.0 and S1005.0 connect with S1000-5. (S1021-S1030)  
**CLIPFIX:** Recesses in channel edge accepts grate with pre-attached lock device to ensure positive locking of grate to channel. Removal of grate provides an unobstructed channel cross section for simple cleaning. Available on J1000 and S1000.

#### Applications

##### Commercial Kitchens

- Stainless Steel protected edge offers sanitary surface that is easy to clean
- Stainless Steel mesh grates for strong sanitary drainage surface

##### Bottling Areas

- Chemical Resistant edge to withstand frequent sanitizing
- Select perforated Stainless Steel gratings for non traffic areas and reinforced perforated for load bearing cart areas

# MEADRAIN® Supreme



## S1000

Clear Width: 4" interior  
 Total Width: 5.1"  
 Edge protection: Integrated stainless steel edge protection  
 Fall Options: Available with built in fall, neutral or stepped fall  
 Locking System: CLIPFIX locking recess or STANDARD  
 Outlet: 4" bottom or end outlet  
 Load Class: A, B, C, E

Channel units with linear fall (fall 0.5%)



product description	length [inches]	total height [inches]		product #	lbs/ unit
		start	end		
S1001	39.4	5.9	6.1	151605	30.4
S1002	39.4	6.1	6.3	151607	31.3
S1003	39.4	6.3	6.5	151609	32.2
S1004	39.4	6.5	6.7	151611	33.3
S1005*	39.4	6.7	6.9	151613	33.7
S1005/A**	39.4	6.7	6.9	151614	33.7
S1006	39.4	6.9	7.1	151619	34.0
S1007	39.4	7.1	7.3	151621	34.8
S1008	39.4	7.3	7.5	151623	35.7
S1009	39.4	7.5	7.7	151625	36.6
S1010*	39.4	7.7	7.9	151627	37.7
S1010/A**	39.4	7.7	7.9	151628	37.7
S1011	39.4	7.9	8.1	151633	38.1
S1012	39.4	8.1	8.3	151635	39.0
S1013	39.4	8.3	8.5	151637	39.9
S1014	39.4	8.5	8.7	151639	40.8
S1015*	39.4	8.7	8.9	151641	42.0
S1015/A**	39.4	8.7	8.9	151642	41.9
S1016	39.4	8.9	9.1	151647	43.4
S1017	39.4	9.1	9.2	151649	44.3
S1018	39.4	9.2	9.5	151651	45.2
S1019	39.4	9.5	9.7	151653	46.1
S1020*	39.4	9.7	9.8	151655	47.4
S1020/A**	39.4	9.7	9.8	151656	47.4

\*With connection facility for vertical discharge outlet connector Ø 4" or silt box/gully

\*\*Channel elements with integrated HD-PE outlet connector Ø 4" with NBR-O sealing

Note

**⚠ WARNING: Cancer and Reproductive Harm - [www.p65warnings.ca.gov](http://www.p65warnings.ca.gov)**

On request channel elements with total height of 9.9 to 12.0 inches are available.

**CLIPFIX:** Recesses in channel edge accepts grate with pre-attached lock device to ensure positive locking of grate to channel. Removal of grate provides an unobstructed channel cross section for simple cleaning. Available on J1000 and S1000.

### Applications

#### Commercial Kitchens

- Stainless Steel protected edge offers sanitary surface that is easy to clean
- Stainless Steel mesh grates for strong sanitary drainage surface

#### Bottling Areas

- Chemical Resistant edge to withstand frequent sanitizing
- Select perforated Stainless Steel gratings for non traffic areas and reinforced perforated for load bearing cart areas

All units in inches unless otherwise noted.



## S1000 Accessories

### Silt Box



Width: 4" interior

Material: Polymer Concrete

Edge protection: Stainless steel edge protection and sediment bucket

product description	length [inches]	total height [inches]	product #	lbs/ unit
S 1000.EK	19.7	22.8	151684	54.0
S 1000.EK LG 10 integrated roddable foul air trap and inline connection Ø 4"	19.7	22.8	151685	61.7
S 1000.EK QG 10 integrated roddable foul air trap and side connection Ø 4"	19.7	22.8	151687	61.7
S 1000.EK QG 15 integrated roddable foul air trap and side connection Ø 6"	19.7	22.8	151689	61.7

For large gully basins, see page 33.

Width: 5.1" interior

Material: Polymer Concrete

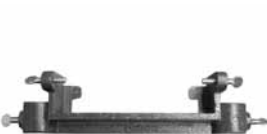
Edge protection: Stainless steel edge protection and sediment bucket

### End Caps



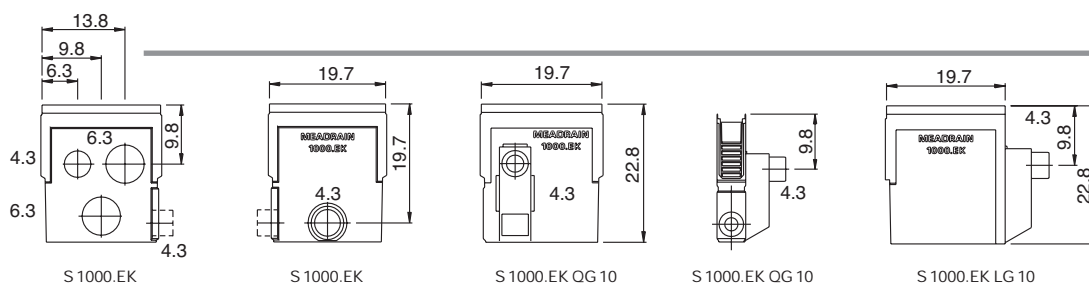
product description	product #	lbs/ unit
S 1000.SE for channel start and end	151671	3.1
S 1000.E end cap with PVC outlet Ø 4" suitable for channel S1000	151673	1.8
S 1005.E end cap with PVC outlet Ø 4" suitable for channel S1005	151675	2.0
S 1010.E End cap with PVC outlet Ø 4" suitable for channel S1010	151677	2.2
S 1015.E End cap with PVC outlet Ø 4" suitable for channel S1015	151679	2.7
S 1020.E End cap with PVC outlet Ø 4" suitable for channel S1020	151681	2.9

### Connector accessories



product description	product #	lbs/ unit
PVC outlet connector Ø 4"	154501	0.4
PVC outlet connector Ø 6"	154503	0.9
lip sealing ring Ø 4" for water-tight connection of S1000.EK	153883	0.0
lip sealing ring Ø 6" for water-tight connection of S1000.EK	153885	0.1
outlet connector set Ø 4" with connector pipe Ø 4", in-line dirt trap and odor seal	150730	0.4
1000 outlet bracket	150905	3.0
1000 extension bracket	150910	3.2

**⚠ WARNING: Cancer and Reproductive Harm - [www.p65warnings.ca.gov](http://www.p65warnings.ca.gov)**



# MEADRAIN® Supreme

## S1000 Grate Options

Width: 4.8"

Locking System: CLIPFIX



### Loading class A



product description	material	length [inches]	product #	Inlet sectional area [in <sup>2</sup> ]	lbs/unit
slotted grating	galv. steel	39.4	152103	43.4	5.3
slotted grating	galv. steel	19.7	152108	21.7	2.9
mesh grating 1.25/0.375 mesh	galv. steel	39.4	152203	122.5	5.1
mesh grating 1.25/0.375 mesh	galv. steel	19.7	152208	61.2	2.9



### Loading class B



product description	material	length [inches]	product #	Inlet sectional area [in <sup>2</sup> ]	lbs/unit
mesh grating 1.25/0.375 mesh	galv. steel	39.4	152303	122.5	6.8
mesh grating 1.25/0.375 mesh	galv. steel	19.7	152308	61.2	3.5



### Loading class C



product description	material	length [inches]	product #	Inlet sectional area [in <sup>2</sup> ]	lbs/unit
slotted grating 0.5/3.54 slots	ductile iron	19.7	152405	13.5	7.7
slotted grating 0.25/3.54 slots	ductile iron	19.7	152403	27.1	7.0
mesh grating 0.8/0.4 mesh	galv. steel	39.4	152603	122.5	11.0
mesh grating 0.8/0.4 mesh	galv. steel	19.7	152608	61.2	5.7
slotted grating	galv. steel	39.4	152713	43.4	12.1
slotted grating	galv. steel	19.7	152718	21.7	6.2



### Loading class E

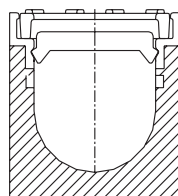


product description	material	length [inches]	product #	Inlet sectional area [in <sup>2</sup> ]	lbs/unit
slotted grating	ductile iron	19.7	152613	30.2	11.5

#### Note

For additional grate options, please see page 50.

**⚠ WARNING: Cancer and Reproductive Harm - [www.p65warnings.ca.gov](http://www.p65warnings.ca.gov)**



CLIPFIX

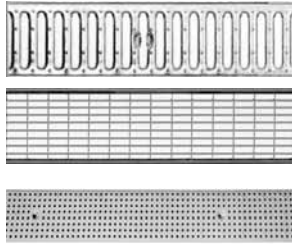
**CLIPFIX:** Recesses in channel edge accepts grate with pre-attached lock device to ensure positive locking of grate to channel. Removal of grate provides an unobstructed channel cross section for simple cleaning. Available on J1000 and S1000.

# MEADRAIN® Top

## S1000 Grate Options

Width: 4.8"

Locking System: Lock bar



### Loading class A



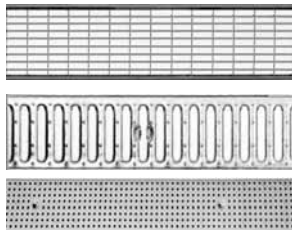
product description	material	length [inches]	product #	Inlet sectional area [in <sup>2</sup> ]	lbs/unit
slotted grating	stainless steel	39.4	152201	43.4	5.1
slotted grating	stainless steel	19.7	152206	21.7	2.7
mesh grating 1.25/0.375 mesh	stainless steel	39.4	152901	122.5	4.9
mesh grating 1.25/0.375 mesh	stainless steel	19.7	152906	61.2	2.7
perforated grating	stainless steel	39.4	152205	37.6	3.8
perforated grating	stainless steel	19.7	152207	18.8	2.0

### Loading class B



product description	material	length [inches]	product #	Inlet sectional area [in <sup>2</sup> ]	lbs/unit
mesh grating 1.25/0.375 mesh	galv. steel	39.4	152303	122.5	6.8
mesh grating 1.25/0.375 mesh	galv. steel	19.7	152308	61.5	3.5

### Loading class C



product description	material	length [inches]	product #	Inlet sectional area [in <sup>2</sup> ]	lbs/unit
mesh grating 1.25/0.375 mesh	stainless steel	39.4	152513	122.5	9.9
mesh grating 1.25/0.375 mesh	stainless steel	19.7	152518	61.2	5.1
slotted grating	stainless steel	39.4	152755	43.4	11.5
slotted grating	stainless steel	19.7	152757	21.7	5.7
perforated grating	stainless steel	39.4	152781	37.6	11.9
perforated grating	stainless steel	19.7	152785	18.8	6.0

### Loading class E



product description	material	length [inches]	product #	Inlet sectional area [in <sup>2</sup> ]	lbs/unit
slotted grating	ductile iron	19.7	152613	30.2	11.5

### Locking mechanism



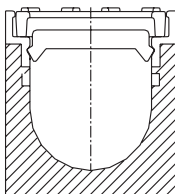
product description	material	product #	lbs/unit
locking mechanism for slotted gratings	stainless steel	152211	0.4
locking mechanism for mesh and perforated grating	stainless steel	152531	0.4

Note

For additional grate options, please see page 50.

2 locking mechanisms per 39.4 inches required.

**⚠ WARNING: Cancer and Reproductive Harm - [www.p65warnings.ca.gov](http://www.p65warnings.ca.gov)**



CLIPFIX

**STANDARD:** Consists of a locking bar which fits in pre-formed recess in channel wall and stainless steel bolt (slotted or hex depending on grate type) which draws the grate to the bar. Available on all MEADRAIN Products.