

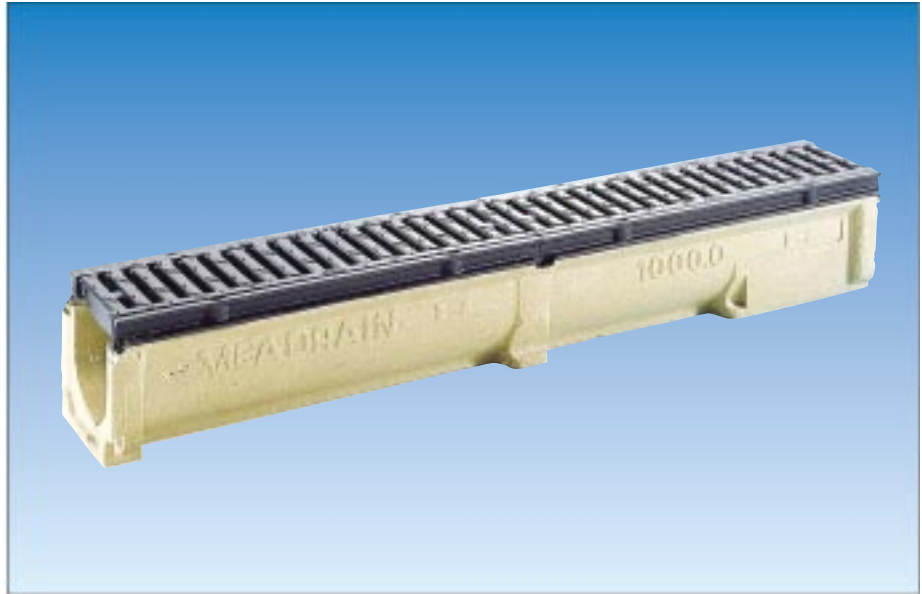
The boltless locking system for loading classes D 400 to F 900

MEADRAIN® PROFIX® withstands extreme loads

Special usage areas such as storage and goods transfer sites subject to truck and forklift truck traffic and building contractors' yards, as well as railway container depots and civilian and military airport sites, require the highest degree of safety and functionality for linear drainage.

MEADRAIN® C 1000 PROFIX®, the channel system with non-bolted grating securement, meets the most stringent requirements in these heavy-load classes.

If quick access to the trench is necessary, the C1000 PROFIX® system is the right one for those applications.



MEADRAIN® C 1000 PROFIX® - Linear drainage for heavy-load areas

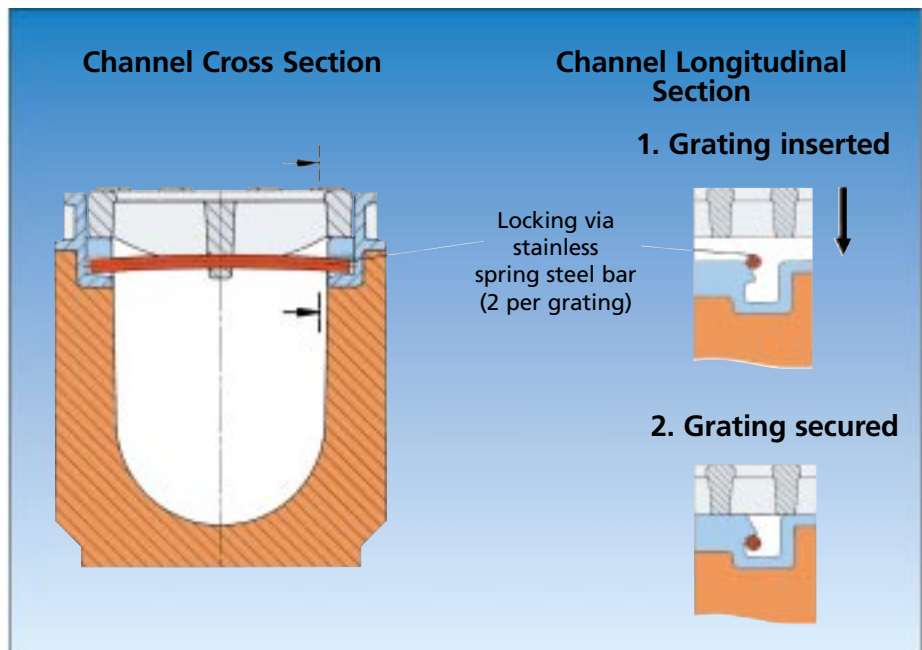
Channel units:

The fixed bond with the cast channel unit gives the integrated ductile iron edge an exact and secure fit.

The MEADRAIN® product line offers 30 different versions alone of this strong channel unit with a 0.5 % fall, as well as a choice of other channels without fall.

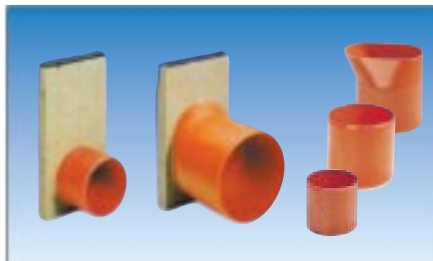
MEADRAIN® PROFIX®: simple functionality – extremely safe

The fully mounted locking mechanism snaps into the integral cast iron edge of the channel bodies and holds the grating securely in position. Additional lugs in the grating mate with the edge protection and prevent any horizontal displacement within the channel.

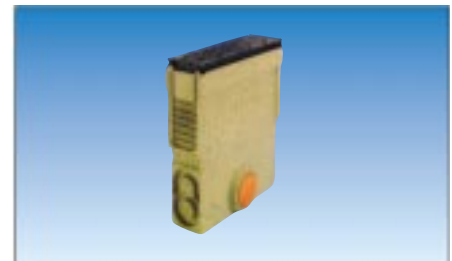


Accessories:

End caps, connectors and silt boxes

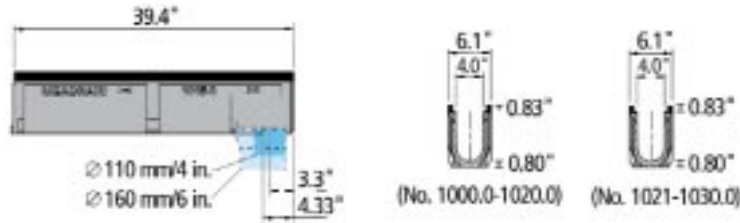


The polymer concrete end caps are available with or without an outlet. PVC Ø 110 mm/4 in. and 160 mm/6 in. connectors fit both channels and silt boxes.



The width of the silt box matches that of the channel, and like the channel, the silt box is provided with a strong cast iron frame. Combined with a cast iron grating, it provides the requisite stability for class F 900.

System overview



Product Description	Product Code	Part No.	Total Length M/in.	Total Height		Fall %	Type of Fall			kg/lb. Unit
				Upstream cm/in.	Downstr. cm/in.					
MEADRAIN® C 1000 PROFIX® Channel units in polymer concrete with integrated ductile iron edge including class F 900 ductile iron gratings with PROFIX® boltless locking system	C 1000.0 ¹⁾	153601	1.0/39.4	15.0/5.9	15.0/5.9	0.0				29.7/65.5
	C 1000.1 ¹⁾²⁾	153603	0.5/19.7	15.0/5.9	15.0/5.9	0.0				14.9/32.9
	C 1001	153605	1.0/39.4	15.0/5.9	15.5/6.1	0.5				29.0/64.0
	C 1002	153607	1.0/39.4	15.5/6.1	16.0/6.3	0.5				29.9/66.0
	C 1003	153609	1.0/39.4	16.0/6.3	16.5/6.5	0.5				29.9/66.0
	C 1004	153611	1.0/39.4	16.5/6.5	17.0/6.7	0.5				30.7/67.7
	C 1005 ¹⁾	153613	1.0/39.4	17.0/6.7	17.5/6.9	0.5				30.9/68.2
	C 1005.0 ¹⁾	153615	1.0/39.4	17.5/6.9	17.5/6.9	0.0				31.2/68.8
	C 1005.1 ¹⁾²⁾	153617	0.5/19.7	17.5/6.9	17.5/6.9	0.0				16.9/37.3
	C 1006	153619	1.0/39.4	17.5/6.9	18.0/7.1	0.5				31.3/69.0
	C 1007	153621	1.0/39.4	18.0/7.1	18.5/7.3	0.5				32.3/71.2
	C 1008	153623	1.0/39.4	18.5/7.3	19.0/7.5	0.5				32.5/71.7
	C 1009	153625	1.0/39.4	19.0/7.5	19.5/7.7	0.5				33.1/73.0
	C 1010 ¹⁾	153627	1.0/39.4	19.5/7.7	20.0/7.9	0.5				33.8/74.6
	C 1010.0 ¹⁾	153629	1.0/39.4	20.0/7.9	20.0/7.9	0.0				33.7/74.3
	C 1010.1 ¹⁾²⁾	153631	0.5/19.7	20.0/7.9	20.0/7.9	0.0				17.7/39.0
	C 1011	153633	1.0/39.4	20.0/7.9	20.5/8.1	0.5				33.9/74.8
	C 1012	153635	1.0/39.4	20.5/8.1	21.0/8.3	0.5				33.1/73.0
	C 1013	153637	1.0/39.4	21.0/8.3	21.5/8.5	0.5				34.1/75.2
	C 1014	153639	1.0/39.4	21.5/8.5	22.0/8.7	0.5				34.5/76.1
	C 1015 ¹⁾	153641	1.0/39.4	22.0/8.7	22.5/8.9	0.5				35.1/77.4
	C 1015.0 ¹⁾	153643	1.0/39.4	22.5/8.9	22.5/8.9	0.0				34.9/77.0
	C 1015.1 ¹⁾²⁾	153645	0.5/19.7	22.5/8.9	22.5/8.9	0.0				18.8/41.5
	C 1016	153647	1.0/39.4	22.5/8.9	23.0/9.1	0.5				35.5/78.3
	C 1017	153649	1.0/39.4	23.0/9.1	23.5/9.3	0.5				36.0/79.4
	C 1018	153651	1.0/39.4	23.5/9.3	24.0/9.4	0.5				35.9/79.2
	C 1019	153653	1.0/39.4	24.0/9.4	24.5/9.6	0.5				37.5/82.7
	C 1020 ¹⁾	153655	1.0/39.4	24.5/9.6	25.0/9.8	0.5				38.0/83.8
	C 1020.0/7.9 ¹⁾	153657	1.0/39.4	25.0/9.8	25.0/9.8	0.0				38.2/84.3
	C 1020.1 ¹⁾²⁾	153659	0.5/19.7	25.0/9.8	25.0/9.8	0.0				18.7/41.3
	C 1021	153701	1.0/39.4	25.5/10.0	26.0/10.2	0.5				36.8/81.2
	C 1022	153703	1.0/39.4	26.0/10.2	26.5/10.4	0.5				36.9/81.4
	C 1023	153705	1.0/39.4	26.5/10.4	27.0/10.6	0.5				37.0/81.6
C 1024	153707	1.0/39.4	27.0/10.6	27.5/10.8	0.5				38.9/85.8	
C 1025 ¹⁾	153709	1.0/39.4	27.5/10.8	28.0/11.0	0.5				39.5/87.1	
C 1026	153711	1.0/39.4	28.0/11.0	28.5/11.2	0.5				40.4/89.1	
C 1027	153713	1.0/39.4	28.5/11.2	29.0/11.4	0.5				41.5/91.5	
C 1028	153715	1.0/39.4	29.0/11.4	29.5/11.6	0.5				39.1/86.2	
C 1029	153717	1.0/39.4	29.5/11.6	30.0/11.8	0.5				40.3/88.9	
C 1030 ¹⁾	153719	1.0/39.4	30.0/11.8	30.5/12.0	0.5				41.7/92.0	
C 1030.0 ¹⁾	153721	1.0/39.4	30.5/12.0	30.5/12.0	0.0				41.7/92.0	
MEADRAIN® C 1000 PROFIX® Connecting units for stepped fall	C 1000-5	153661	1.0/39.4	15.0/5.9	17.5/6.9	2.5				29.2/64.4
	C 1005-10	153663	1.0/39.4	17.5/6.9	20.0/7.9	2.5				30.6/67.5
	C 1010-15	153665	1.0/39.4	20.0/7.9	22.5/8.9	2.5				33.0/72.8
	C 1015-20	153667	1.0/39.4	22.5/8.9	25.0/9.8	2.5				33.7/74.3

1) Channel unit with connection facility for vertical discharge Ø 110 mm/4 in. and 160 mm/6 in. oval/round or to silt box/gully

2) Channel unit with corner- and cross-junction connection facilities

Non-bolted grating securement for heavy-load zones

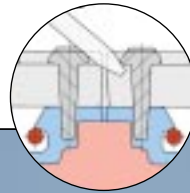
The MEADRAIN® PROFIX® grating securement system offers many advantages for specifiers, planners and civil engineering professionals:

- Quick, cost-effective installation and removal of grating
- Bidirectional installation of grating
- Inserted grating, once pressed into position, remains firmly locked in place
- Able to be opened using conventional tools
- Long service life as the locking mechanism lies below the load and soiling level
- Vandal-resistant as the securing mechanism is concealed on the underside of the grating
- Optimized grate free area
- Special anti-overshoot feature for water



Simple installation of gratings into the MEADRAIN® C 1000 Heavy Load Channel

- Insert the grating into the channel body
- Step on the grating to snap in the PROFIX®
- Two fold stainless spring steel bars per grating provide secure locking



Rapid removal of cast iron gratings

- Using conventional tools, simply apply at joint between gratings and lift up
- Remove grating