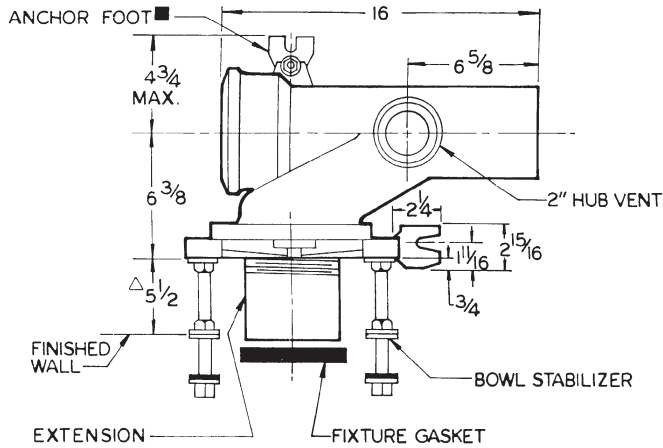


12674-HS SERIES

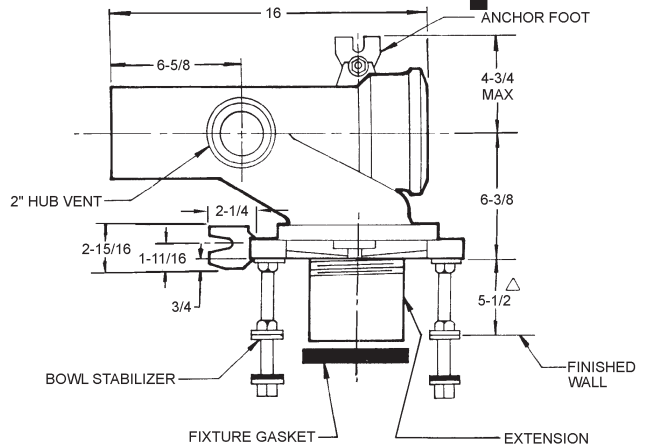
Single, Left-Hand, Hub & Spigot



65 LBS.

12684-HS SERIES

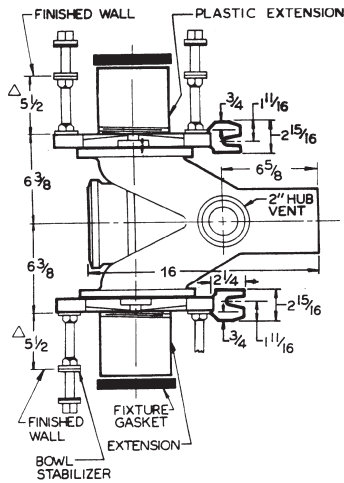
Single, Right-Hand, Hub & Spigot



65 LBS.

12694-HS SERIES

Back-to-Back, Hub & Spigot

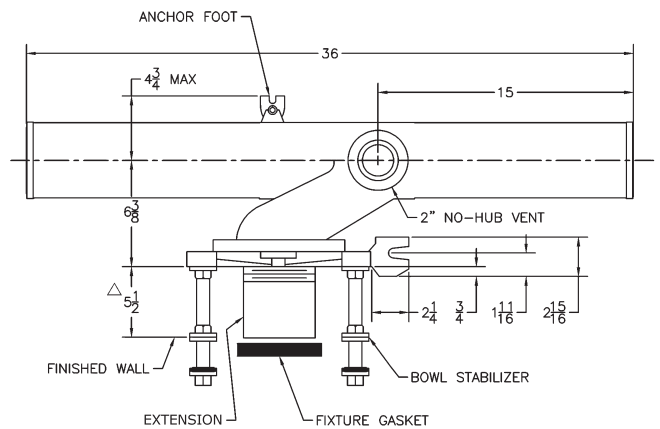


112 LBS.

12674-58 SERIES

Long Barrel

Single, Left-Hand, No-Hub

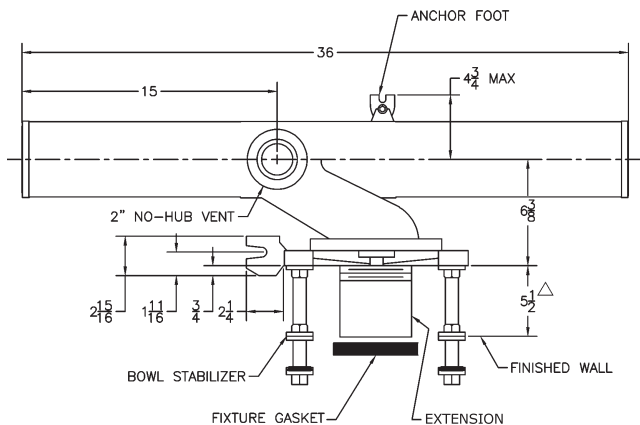


82 LBS.

12684-58 SERIES

Long Barrel

Single, Right-Hand, No-Hub

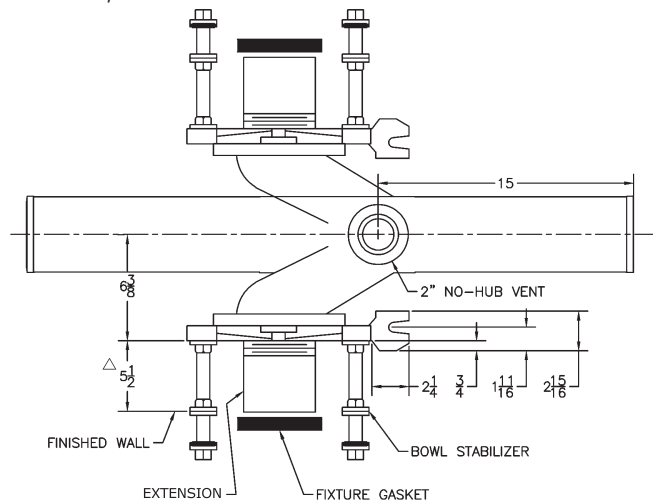


82 LBS.

12694-58 SERIES

Long Barrel

Back-to-Back, No-Hub



125 LBS.

RECOMMENDED ALL FEET BE SECURED TO FLOOR WITH 1/2" BOLTS AND ANCHORS BY OTHERS.

FOR DIM. SHORTER THAN 5-1/2" (1" MIN.) CUT EXT. SPECIFY -10 FOR LONGER EXT. (10-1/2" MAX.)