

6" WIDE TRENCH DRAIN

76000
5" Deep, Heavy-Duty SUPER-FLO® Grate



Page 254

12" WIDE TRENCH DRAIN

76010
7-5/8" Deep, Heavy-Duty Grate



Page 255

FRAMES & GRATES

76300, 76400
12-3/8" Wide, Light-Duty Grate



Page 255

76500, 76600
12-5/8" Wide, Medium-Duty Grate



Page 256

76700, 76800
12-5/8" Wide, Heavy-Duty Grate



Page 256

76000 SERIES

APPLICATION

For use in heavy traffic areas where a continuous trench drain is required such as in parking garages, vehicle repair facilities, manufacturing plants and ramps. The internal dome strainer intercepts debris, that could block the drain line. An outlet section can be used individually as an area drain.

SPECIFICATION

JOSAM 76000 Series coated cast iron rectangular sectional Trench Drain with heavy-duty body sections and integral anchor flange, heavy-duty loose-set SUPER-FLO® Grates with perimeter drainage slots, 5/16" x 3-1/2" grate openings, secondary loose-set dome strainer and bottom outlet inside caulk connection.

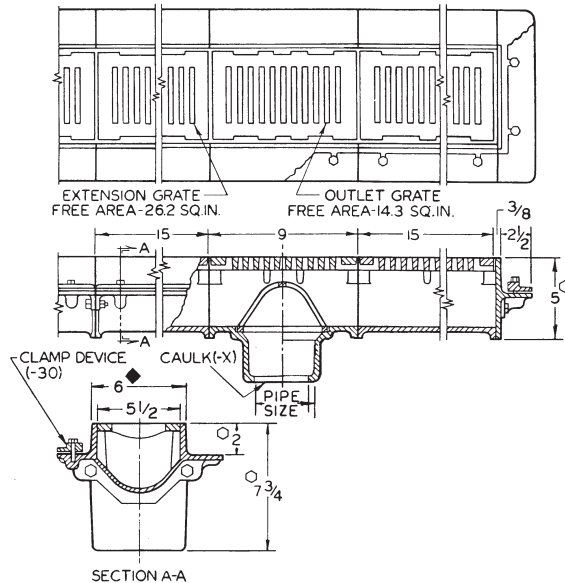
Available Options

- EXT Extension Section
 - 1 Satin Finish Nikaloy Top
 - 2 Satin Finish Bronze Top
 - 7 Ductile Iron Grate
 - * -VP Secured Grate, Vandal-Proof Screws
 - 30 Flashing Clamp Device
 - 40 Galvanized Cast Iron Parts
- OUTLET:**
- X Inside Caulk Outlet

*For installations exposed to vehicular traffic, specify -VP, Secured Grate.

TYPE NO.	PIPE SIZE	LENGTH IN.		LBS.	
		OUTLET SECTION	EXTENSION SECTION	OUTLET SECTION	EXTENSION SECTION
76002	2	9	15	32	32
76003	3	9	15	32	32
76004	4	9	15	32	32

SUPER-FLO® 6" WIDE, RECTANGULAR



GRATE SLOT OPENINGS ARE: 3-1/2" x 5/16" C. I.
1-11/16" x 1/4" BRONZE AND NIKALOY

IT IS RECOMMENDED THAT NO MORE THAN 8 EXTENSION SECTIONS BE USED WITH ONE OUTLET SECTION.

○ ADD 1/4" FOR NIKALOY OR BRONZE TOP.

◆ ADD 1/4" TO WIDTH AND OVERALL LENGTH FOR NIKALOY OR BRONZE TOP.

FOR OUTLET TYPE SPECIFY -X