



INSTALLATION AND OPERATING INSTRUCTIONS
FOR
GREASE
INTERCEPTORS

IMPORTANT
PLEASE READ CAREFULLY
Interceptor will operate efficiently
ONLY when properly installed.

**DO NOT DISCARD THIS BOOKLET—KEEP
FOR OPERATOR AND MAINTENANCE DEPT.**

JOSAM COMPANY
P.O. Box T, Michigan City, IN 46361

IMPORTANT INSTALLATION POINTS TO CHECK

(Operating Instructions on Pages 14-16)

- 1 We trust you have selected the proper size JOSAM Grease Interceptor to suit your particular requirements. Size is based on Flow Rate. (See Chart Page 4.)
- 2 The Interceptor must be correctly installed with the Flow Control† in the waste line beyond the last connection from the fixture and as close as possible to the underside of lowest fixture. A Flow Control Fitting is furnished with every JOSAM Interceptor at no extra cost. Only with the proper installation of the INTERCEPTOR and FLOW CONTROL can you be assured that the unit will operate efficiently.
- 3 Air intake for Flow Control may terminate under drain board or intersect a vent stack not lower than level of sink rim or terminate in a return bend at the same height and on outside of building, all subject to approval of your code authority.
- 4 Grease Interceptor must have vented waste, sized as required by local code for venting traps to retain water seal and prevent siphoning.
- 5 Consult Pages 7-13 to locate the installation diagram which most closely suits your requirements. Install the Flow Control Fitting and Interceptor as shown.
- 6 Follow instructions carefully and your JOSAM Grease Interceptor, with regular periodic cleaning, will provide outstanding service.

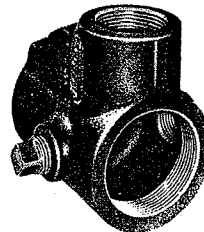
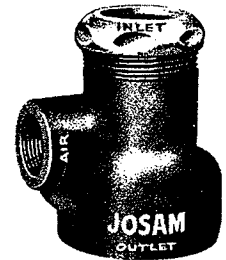
† Flow Control is Wired to Trap Leg of Interceptor

2 TYPES OF JOSAM FLOW CONTROLS

The link between fixture and interceptor to produce satisfactory operation is a FLOW CONTROL FITTING. Through exhaustive tests and experiments, JOSAM discovered that maximum Grease Interceptor efficiency depends on the proper rate of flow for the Interceptor connected. As a result, a JOSAM Flow Control Fitting is included with all JOSAM Grease Interceptors at no extra cost. The Flow Control Fitting should be installed to prevent overloading the Interceptor and to maintain its maximum grease retention efficiency.

To regulate the flow of waste water into the Interceptor, JOSAM makes two types of Flow Controls. The one best suited for each Interceptor is shipped attached to the trap leg of the Interceptor. It must be installed according to directions on Page 2. The illustrations below identify the different types.

Series 60701 ½ Cast Iron Flow Control with air intake and slip joint inlet and threaded outlet.



Series 60730 Flow Control comes with either a 2" or 3" threaded inlet and outlet. It incorporates two plugged cleanout openings, which permit easy cleaning of the orifice in the event the opening becomes clogged. A threaded air intake connection is standard with this series Flow Control. This Flow Control is furnished with all larger size Grease Interceptors covered by these instructions.

FLOW CONTROL NUMBER, ROUGHING & ORIFICE

TYPE NO.	RATING IN G.P.M.	INLET & OUTLET	ROUGHING CENTER "H" IN INCHES	TYPE FLOW CONTROL STANDARD	ORIFICE DIA. IN INCHES	SCHEME (Page 5)
60101	4	2	16	60701 1/2	9/16	#1
60102	7	2	16	60701 1/2	11/16	
60103	10	2	16	60701 1/2	7/8	
60104	15	2	20	60732	15/16	#2 or
60105	20	3	20	60733	1 1/8	
60106	25	3	22	60733	1 1/4	#3
60107	35	3	22	60733	1 1/2	or
60108	50	3	22	60733	1 3/4	#4
60115	20	2	28	60732	1 1/16	#4
60117	35	3	28	60733	1 7/16	
† 60123	10	2	16	60701 1/2	7/8	#1
† 60124	15	2	20	60732	15/16	
† 60125	20	3	20	60733	1 1/8	#3 or
† 60126	25	3	22	60733	1 1/4	
† 60127	35	3	22	60733	1 1/2	#5
† 60128	50	3	22	60733	1 3/4	
• 60002	7	2	16	60701 1/2	11/16	#1
• 60003	10	2	16	60701 1/2	7/8	
• 60004	15	2	20	60732	15/16	#2 or
• 60005	20	2	20	60732	1 1/8	
• 60006	25	3	22	60733	1 1/4	#3 or
• 60007	35	3	22	60733	1 1/2	
• 60008	50	3	22	60733	1 3/4	#4 or
• 60009	75	3	24	60733	2 1/8	

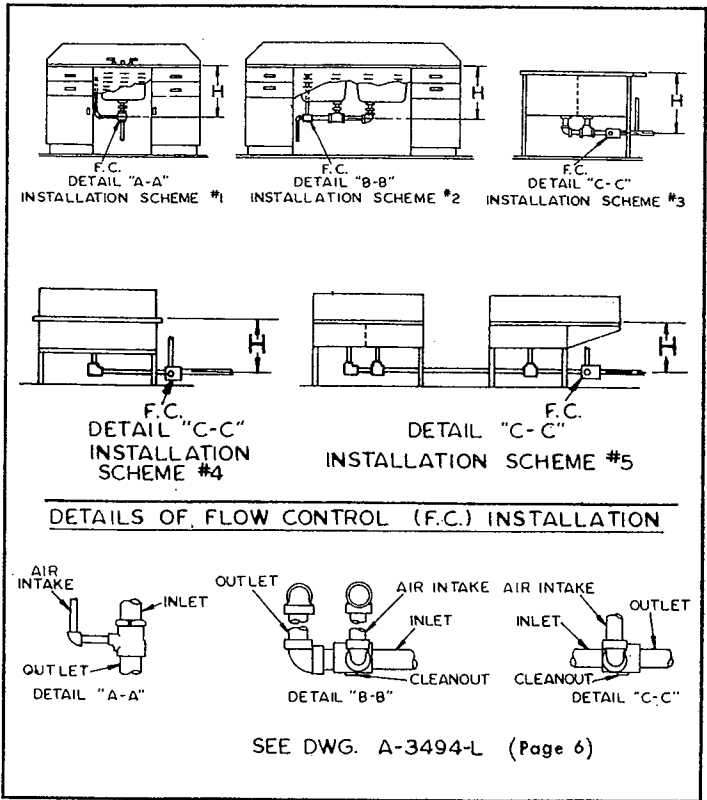
ORIFICE SIZE IN SCHEDULE IS BASED ON FLOW RATE GIVEN FOR RESPECTIVE INTERCEPTOR WITH FLOW CONTROL INSTALLED ON WASTE LINE AS PER SCHEME DESIGNATED & ROUGHED AT CENTER NOT IN EXCESS OF "H" DIMENSION.

WHERE INSTALLATION CONDITIONS VARY FROM SCHEDULE CONTACT JOSAM COMPANY WITH FULL DETAILS OF PROPOSED INSTALLATION FOR PROPER FLOW CONTROL AND ORIFICE.

LOCATION OF INTERCEPTOR WITH REFERENCE TO THE FIXTURE DOES NOT AFFECT FLOW CONTROL ORIFICE, BUT LOCATION OF FLOW CONTROL DOES.

† ALSO APPLIES TO EQUIVALENT TYPES IN 60130 AND 60140 SERIES

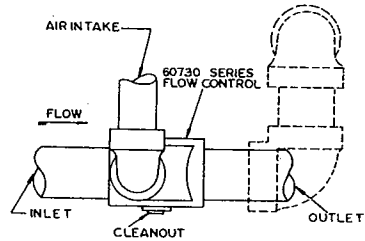
• ALSO APPLIES TO EQUIVALENT TYPES IN 60030, 60040, 60010-50, 60130-50 and 60140-50 SERIES



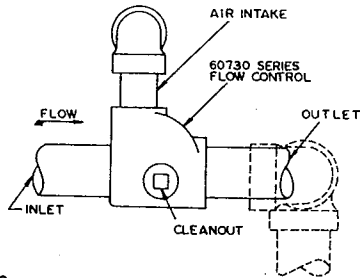
NOTE: SEE TABLE ON PAGE 4 FOR TYPE NUMBERS ON SCHEMES

FLOW CONTROL SCHEDULE
60701 1/2 and 60730 SERIES
INSTALLATION SCHEMES

FLOW CONTROL SCHEDULE FOR SELECTED INTERCEPTORS
60701 1/2 AND 60730 SERIES



PLAN



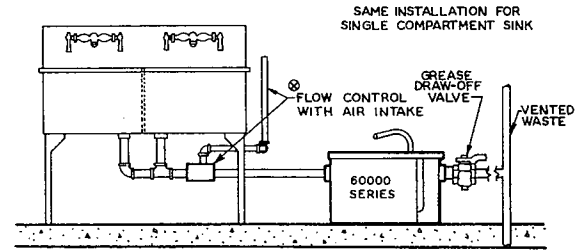
ELEVATION

NOTES

AIR INTAKE-INTERSECT VENT STACK ABOVE HIGHEST FIXTURE OR EXTEND TO ROOF; OR LEAVE SAME OPEN-ENDED ABOVE HIGHEST FIXTURE.
 FLOW CONTROL-FURNISHED WITH THREADED PIPE CONNECTIONS.

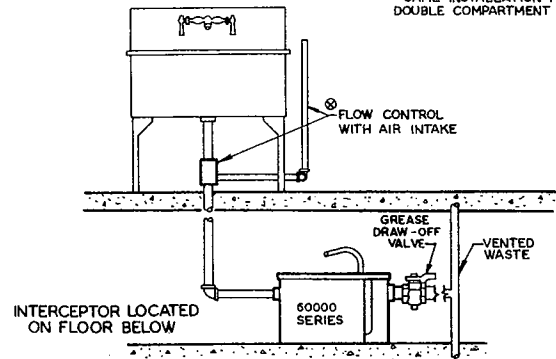
**FLOW CONTROL INSTALLATION DIAGRAM
 60730 SERIES**

Waste line above floor - threaded connections and piping



INTERCEPTOR LOCATED ON FLOOR

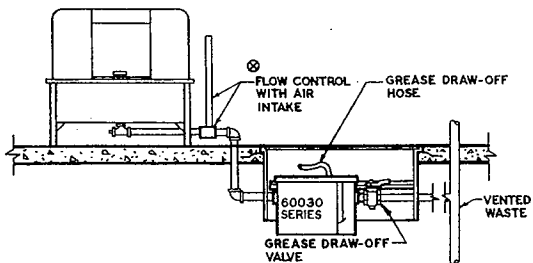
SAME INSTALLATION FOR DOUBLE COMPARTMENT SINK



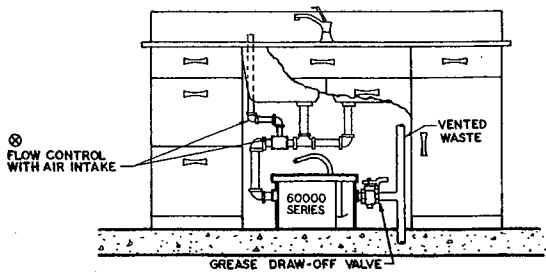
INTERCEPTOR LOCATED ON FLOOR BELOW

⊗ CARRY AIR INTAKE FROM FLOW CONTROL TO OUTSIDE AND FIT ELBOW, TURNED DOWN; OR INTERSECT A LOCAL VENT OR VENT STACK WITHOUT TRAP IF PERMITTED BY CODE; TOP OF AIR INTAKE FROM FLOW CONTROL NOT TO BE LOWER THAN RIM OF FIXTURE.

**SINGLE OR DOUBLE COMPARTMENT SINK
 60000 SERIES Interceptor with Grease Draw-Off
 installed on same floor or floor below fixture served**



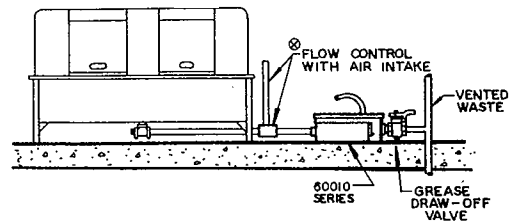
INTERCEPTOR RECESSED FLUSH WITH FLOOR



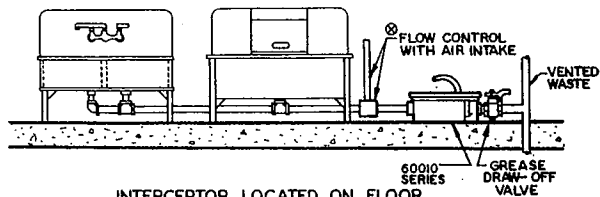
INTERCEPTOR IN CABINET ON FLOOR

⊗ CARRY AIR INTAKE FROM FLOW CONTROL TO OUTSIDE AND FIT ELBOW, TURNED DOWN; OR INTERSECT A LOCAL VENT OR VENT STACK WITHOUT TRAP IF PERMITTED BY CODE; TOP OF AIR INTAKE FROM FLOW CONTROL NOT TO BE LOWER THAN RIM OF FIXTURE.

DISHWASHING MACHINE - 60030 SERIES
 Interceptor with Grease Draw-Off - recessed flush with floor
 RESIDENTIAL DOUBLE COMPARTMENT SINK - 60000 SERIES
 Interceptor with Grease Draw-Off - in cabinet on floor



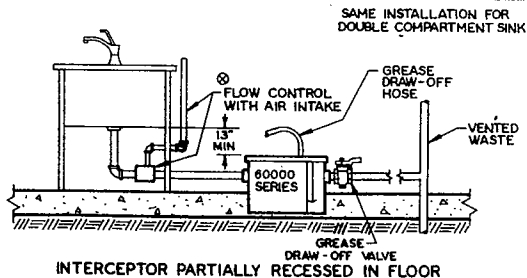
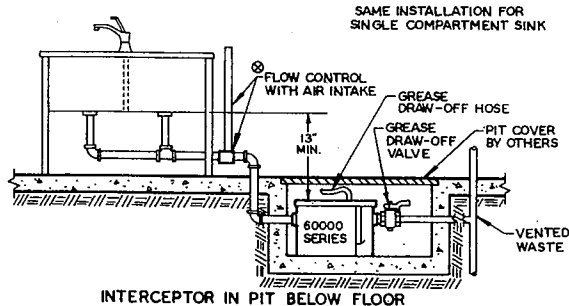
INTERCEPTOR LOCATED ON FLOOR



INTERCEPTOR LOCATED ON FLOOR

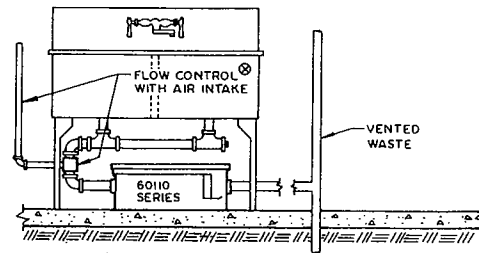
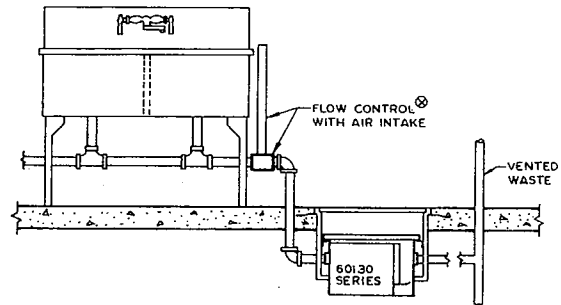
⊗ CARRY AIR INTAKE FROM FLOW CONTROL TO OUTSIDE AND FIT ELBOW, TURNED DOWN; OR INTERSECT A LOCAL VENT OR VENT STACK WITHOUT TRAP IF PERMITTED BY CODE; TOP OF AIR INTAKE FROM FLOW CONTROL NOT TO BE LOWER THAN RIM OF FIXTURE.

DISHWASHING MACHINE
 RESTAURANT SINK AND DISHWASHER
 60010 SERIES
 Interceptor with Grease Draw-Off - installed on floor



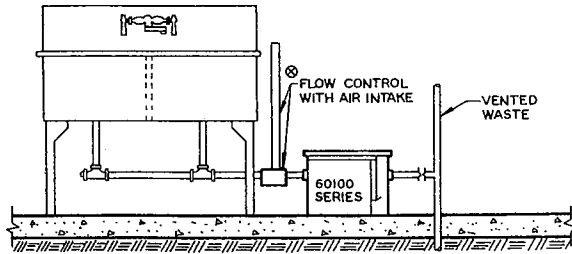
⊗ CARRY AIR INTAKE FROM FLOW CONTROL TO OUTSIDE AND FIT ELBOW, TURNED DOWN;
OR INTERSECT A LOCAL VENT OR VENT STACK WITHOUT TRAP IF PERMITTED BY CODE;
TOP OF AIR INTAKE FROM FLOW CONTROL NOT TO BE LOWER THAN RIM OF FIXTURE.

SINGLE OR DOUBLE COMPARTMENT SINK
60000 SERIES
Interceptor with Grease Draw-Off
in pit below floor or partially recessed in floor.

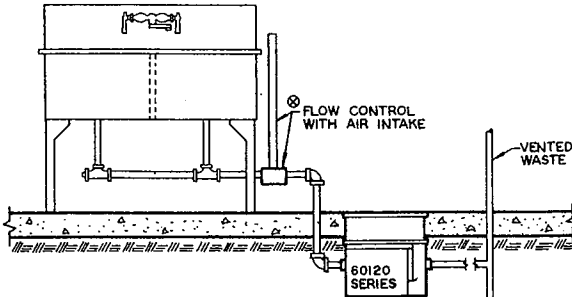


⊗ CARRY AIR INTAKE FROM FLOW CONTROL TO OUTSIDE AND FIT ELBOW, TURNED DOWN;
OR INTERSECT A LOCAL VENT OR VENT STACK WITHOUT TRAP IF PERMITTED BY CODE;
TOP OF AIR INTAKE FROM FLOW CONTROL NOT TO BE LOWER THAN RIM OF FIXTURE.

DOUBLE COMPARTMENT SINK
60130 AND 60110 SERIES
Interceptor recessed flush with floor
or on floor under sink.



INTERCEPTOR INSTALLED ON FLOOR

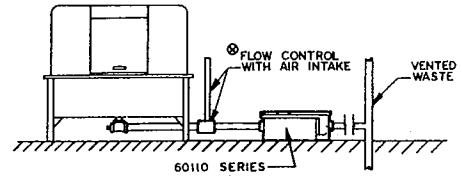


INTERCEPTOR RECESSED WITH DEEP
ROUGHING EXTENDED FLUSH WITH FLOOR

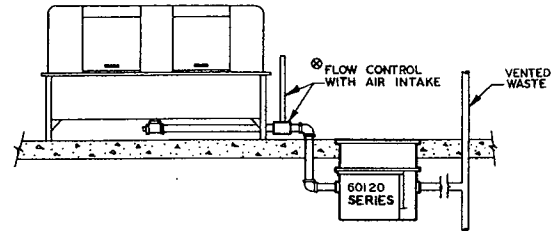
⊗ CARRY AIR INTAKE FROM FLOW CONTROL TO OUTSIDE AND FIT ELBOW, TURNED DOWN;
OR INTERSECT A LOCAL VENT OR VENT STACK WITHOUT TRAP IF PERMITTED BY CODE;
TOP OF AIR INTAKE FROM FLOW CONTROL NOT TO BE LOWER THAN RIM OF FIXTURE.

DOUBLE COMPARTMENT SINK
60100 OR 60120 SERIES

Interceptor on floor or recessed extended flush with floor.



INTERCEPTOR LOCATED ON FLOOR



INTERCEPTOR RECESSED WITH DEEP
ROUGHING EXTENDED FLUSH WITH FLOOR

⊗ CARRY AIR INTAKE FROM FLOW CONTROL TO OUTSIDE AND FIT ELBOW, TURNED DOWN;
OR INTERSECT A LOCAL VENT OR VENT STACK WITHOUT TRAP IF PERMITTED BY
CODE; TOP OF AIR INTAKE FROM FLOW CONTROL NOT TO BE LOWER THAN RIM OF
FIXTURE.

DISHWASHING MACHINES
60110 OR 60120 SERIES

Interceptor on floor or recessed extended flush with floor.

OPERATING INSTRUCTIONS

60000, 60010, 60030 AND 60040 SERIES

GREASE INTERCEPTORS WITH SEMI-AUTOMATIC GREASE DRAW-OFF

LOW PRESSURE CHAMBER MUST BE PRIMED
BEFORE UNIT WILL OPERATE PROPERLY

Instructions for Priming

1. Remove cap from draw-off outlet and attach hose.
2. Turn valve to "CLOSED" position. (Valve handle acts as directional indicator.)
3. Place bucket under hose and run water from fixture into interceptor until FULL STREAM of water flows out of hose.
4. Turn valve to "OPEN" or "THRU FLOW" position.
5. Shut off water supply from fixture to the Interceptor.
6. Remove hose, replace cap and unit is ready for normal operation.

Instructions for Grease Removal

Remove grease at least once a week. The most desirable time for grease removal is immediately after the unit has been put to its heaviest use.

1. Remove cap from draw-off outlet and attach hose.
2. Allow a stream of hot water (140° F. or hotter) from fixture to run into the Interceptor for approximately 1½ minutes.
3. Turn off hot water from fixture and let Interceptor remain UNUSED for approximately 5 minutes.
4. Place container for salvaged grease under the draw-off hose.
5. Turn valve handle crosswise to line, "CLOSED" position.
6. Turn on hot water from fixture to flow into Interceptor at a rate NOT EXCEEDING 2 GALLONS PER MINUTE.
7. Permit grease to flow from hose until clear water begins to flow, at which time turn valve handle to "OPEN" position (Parallel to pipe line).
8. Raise hose to full vertical position to empty hose and fittings.
9. Shut off flow of hot water from fixture into Interceptor.
10. Remove hose, replace cap and unit is again ready for normal operation.

OPERATING INSTRUCTIONS

60100, 60110, 60120, 60130 60140, 60200 AND 60210 SERIES

STANDARD GREASE INTERCEPTORS

Instructions for Priming

Remove cover, check baffles. Replace cover and fill with water. The unit is then ready for normal use.

Instructions for Grease Removal

1. Periodic removal of grease is dependent upon the capacity of the Interceptor and the quantity of grease in the waste water. Grease removal periods may therefore vary from once a week to once in several weeks, but periodic and frequent removal is recommended to maintain efficiency.
2. To remove grease, remove the cover and scoop out the grease with a ladle or small bucket.
3. Replace the cover, tighten in place, and the unit is again ready for normal operation.

60300 SERIES

Most installations of JOSAM 60300 Series Interceptors require special engineering because of the nature and amount of the liquid waste to be handled, the arrangement of the space where the Interceptor is to be located, the handling of the salvaged grease and other individual problems that arise with each particular type of business. For complete information on JOSAM 60300 Series Interceptor, write to our Engineering Department.

OPERATING INSTRUCTIONS
60100-50, 60110-50,
60130-50 AND 60140-50 SERIES

STANDARD GREASE INTERCEPTORS WITH GREASE RECOVERY CONE

INSTALLATION DIAGRAMS FOR "DRAW-OFF" TYPES APPLY.
(SEE PAGES 7-10.)

Instructions for Priming

1. Remove cover, check baffles.
2. Replace cover and fill with water. The unit is ready for normal use.

Instructions for Grease Removal

Remove grease at least once a week. The most desirable time for grease removal is immediately after the unit has been put to its heaviest use.

1. Remove cap from draw-off outlet and attach hose.
2. Allow a stream of hot water (140° F. or hotter) from fixture to run into the Interceptor for approximately 1½ minutes.
3. Turn off hot water from fixture and let Interceptor remain UNUSED for approximately 5 minutes.
4. Place container for salvaged grease under the draw-off hose.
5. Turn valve handle crosswise to line, "CLOSED" position.
6. Turn on hot water from fixture to flow into Interceptor at a rate NOT EXCEEDING 2 GALLONS PER MINUTE.
7. Permit grease to flow from hose until clear water begins to flow, at which time turn valve handle to 'OPEN' position (Parallel to pipe line).
8. Raise hose to full vertical position to empty hose and fittings.
9. Shut off flow of hot water from fixture into Interceptor.
10. Remove hose, replace cap and unit is again ready for normal operation.