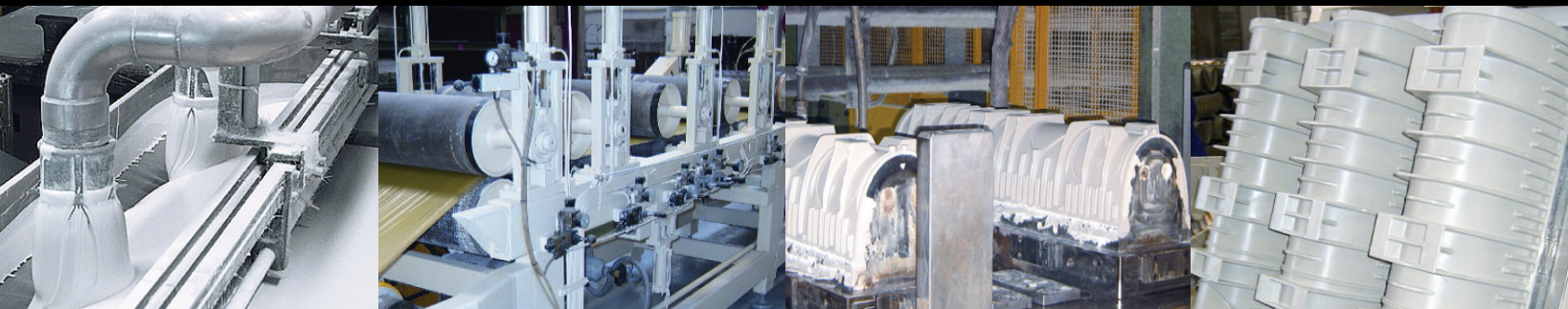




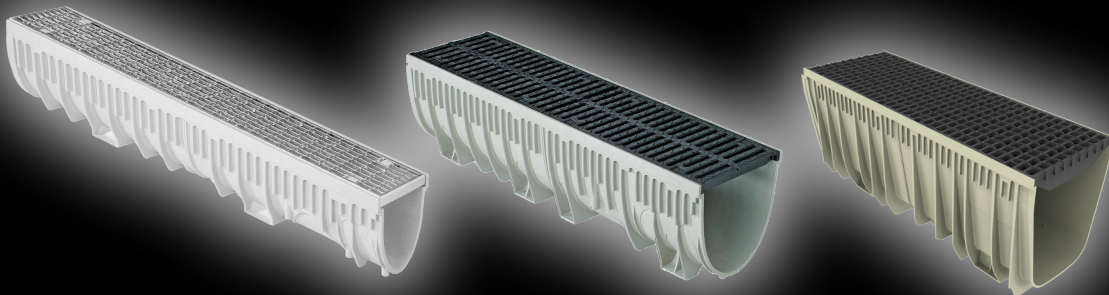
Precision Manufacturing

Mea-Josam's Pro-Plus product line is manufactured using glass-fiber reinforced polyester (GRP) pressed from sheet molding compound (SMC), which is a composite of polyester resin, mineral fillers and glass fiber mats. SMC is a tried and tested GRP material that results in a product that is 70% lighter than polymer concrete and yet 1.5 times stronger than polymer concrete. Additionally, SMC/GRP has greater compressive, flexural and tensile strength and less thermal expansion properties than either polypropylene or high density polyethylene.



Producing Quality and Distinctive Products

The Mea-Josam line of trench drains are available in either ½ meter or full meter lengths, with or without slope and in 4", 8" or 12" nominal widths. Mea-Josam's grate offering includes steel, HDPE, ductile iron and polymer suitable for load class ratings A through E. With the patent pending STARFIX securing system, securing grates has never been as fast or as simple. All of the different grates can be secured and removed quickly and easily with a single hand movement and without the use of bolts or special tools.



For full details on the Mea-Josam Pro-Plus trench drain system contact your local representative or visit www.JOSAM.com.

JOSAM COMPANY 525 West Highway 20 Michigan City, IN 46360 P 800.36.JOSAM F 800.627.0008 www.josam.com