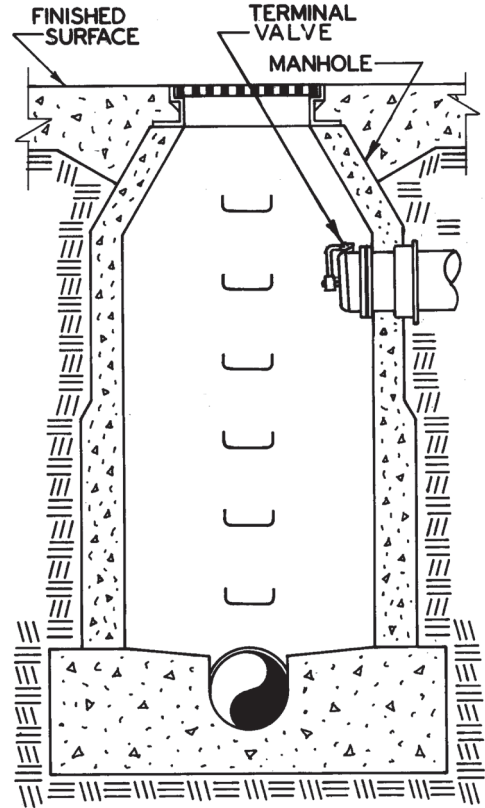


67800 Series swing-check Backwater Valve shown installed in a manhole terminal.

67800



## SPECIFICATION:

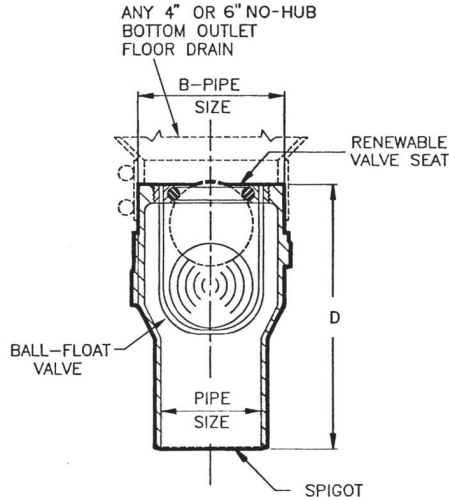
JOSAM 67100A SERIES COATED CAST IRON BACKWATER VALVE, PLASTIC BALL-FLOAT, ELASTOMER SEAT, BRONZE CAGE AND BOTTOM OUTLET SPIGOT CONNECTION.

## BACKWATER VALVE

### BALL-FLOAT ADAPTER

SERIES

67100A



PIPE SIZE	B	D
2"	4	6-5/8
3"	4	7-7/8
4"	4	6-1/8
6"	6	10

- 5 GALVANIZED CAST IRON PARTS  
 -35 1/2" PRIMER TAP

DRAWING No. 07/01/08

A-14219-K

**JOSAM COMPANY**  
MICHIGAN CITY, INDIANA

NOTES:

## SPECIFICATION:

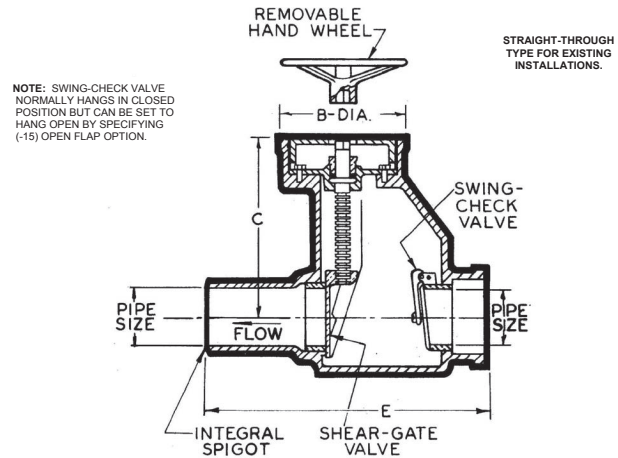
JOSAM 67360 SERIES COATED CAST IRON COMBINATION BACKWATER VALVE, STRAIGHT-THROUGH TYPE, BRONZE SWING-CHECK ASSEMBLY, BRONZE MANUALLY OPERATED SHEAR-GATE WITH NON-RISING STEM AND HUB & SPIGOT CONNECTIONS.

## BACKWATER VALVE

### SHEAR-GATE & SWING-CHECK

SERIES

67360



NOTE: SWING-CHECK VALVE NORMALLY HANGS IN CLOSED POSITION BUT CAN BE SET TO HANG OPEN BY SPECIFYING (-15) OPEN FLAP OPTION.

PIPE SIZE	B	C	E
3"	8	12	17-1/2
4"	8	12	17-1/2
5"	10-1/2	14-1/2	19-1/2
6"	10-1/2	14-1/2	19-1/2

- DH DOUBLE HUB  
 -15 OPEN FLAP  
 -28 12" CAST IRON EXTENSION AND STEM  
 -29 24" CAST IRON EXTENSION AND STEM

▼ SEPARATE SUBMITTAL FOR THIS OPTION AVAILABLE

DRAWING No. 07/01/08

A-12501-K

**JOSAM COMPANY**  
MICHIGAN CITY, INDIANA

NOTES:

## SPECIFICATION:

JOSAM 67360-DH SERIES COATED CAST IRON COMBINATION BACKWATER VALVE, STRAIGHT-THROUGH TYPE, BRONZE SWING-CHECK ASSEMBLY, BRONZE MANUALLY OPERATED SHEAR-GATE WITH NON-RISING STEM AND HUB CONNECTIONS.

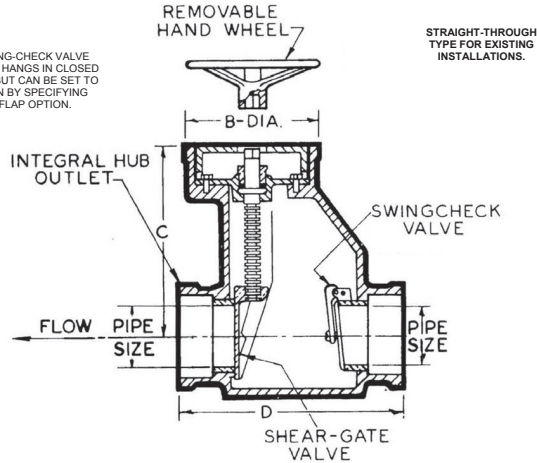
### BACKWATER VALVE SHEAR-GATE & SWING-CHECK

SERIES

67360-DH

FORMERLY 67350 SERIES

NOTE: SWING-CHECK VALVE NORMALLY HANGS IN CLOSED POSITION BUT CAN BE SET TO HANG OPEN BY SPECIFYING (-15) OPEN FLAP OPTION.



PIPE SIZE	B	C	D
3"	8	12	16
4"	8	12	16
5"	10-1/2	14-1/2	16
6"	10-1/2	14-1/2	16

- DH DOUBLE HUB
- 15 OPEN FLAP
- 28 12" CAST IRON EXTENSION AND STEM
- 29 24" CAST IRON EXTENSION AND STEM

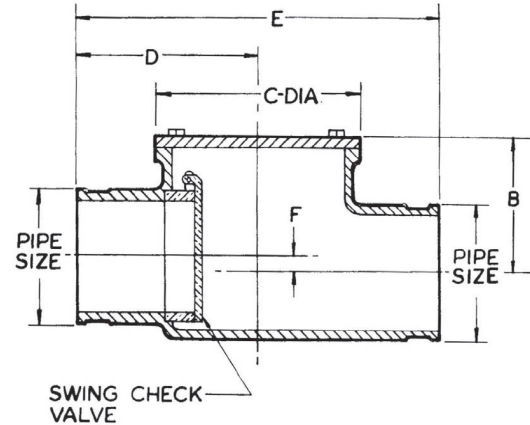
## SPECIFICATION:

JOSAM 67400 SERIES COATED CAST IRON BACKWATER VALVE, OFFSET TYPE, BRONZE FIXED SWING-CHECK ASSEMBLY, BOLTED GASKETED COVER AND NO-HUB CONNECTIONS.

### BACKWATER VALVE NO-HUB SWING-CHECK

SERIES

67400

BOLTED COVER,  
OFFSET TYPE

PIPE SIZE	B	C	D	E	F
2"	3-5/8	5-1/4	4	8	1/2
3"	4	6	5	10	1/2
4"	4-3/4	7	6	12	1/2
6"	5-3/4	9	6	12	5/8

DRAWING No. 07/01/08

A-11275-K

**JOSAM COMPANY**  
MICHIGAN CITY, INDIANA

NOTES:

DRAWING No. 07/01/08

A-13961-K

**JOSAM COMPANY**  
MICHIGAN CITY, INDIANA

NOTES:

## SPECIFICATION:

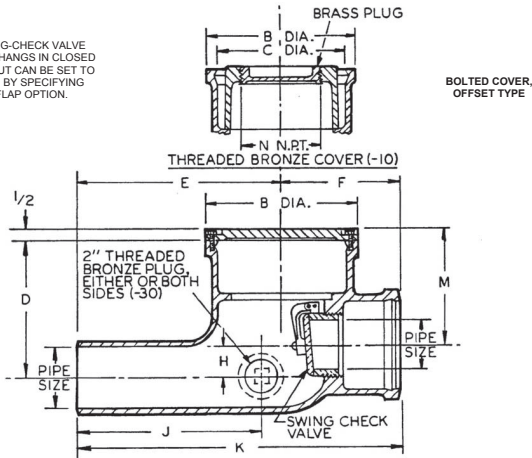
JOSAM 67500 SERIES COATED CAST IRON BACKWATER VALVE, OFFSET TYPE, BRONZE SWING-CHECK ASSEMBLY, BOLTED GASKETED COVER AND HUB & SPIGOT CONNECTIONS.

## BACKWATER VALVE HUB & SPIGOT SWING-CHECK

SERIES

67500

**NOTE:** SWING-CHECK VALVE NORMALLY HANGS IN CLOSED POSITION BUT CAN BE SET TO HANG OPEN BY SPECIFYING (-15) OPEN FLAP OPTION.



PIPE SIZE	B	D	E	F	H	J	K	M
2"	6-7/8	6-1/4	7	5	1-1/2	6-1/2	12	5-1/4
3"	7-7/8	7-1/2	10	5-3/4	1-1/4	9	15-3/4	6-3/4
4"	9	8-1/8	10-3/4	6-3/8	1-1/2	9	17-1/8	7-1/4
6"	11-1/4	10	11-3/4	7-3/4	1-3/4	10-3/4	19-1/2	8-3/4
8"	13-3/4	11-3/4	12-1/2	7-3/4	2-1/4	11	20-1/4	10

- 10" THREADED BRONZE COVER (3" - 8" SIZES ONLY) \* FOR EXTENSION, USE -10 OPTION WITH HUB & SPIGOT PIPE BY OTHERS  
 -15 OPEN FLAP  
 -30 2" AUXILIARY INLET WITH BRONZE PLUG

## SPECIFICATION:

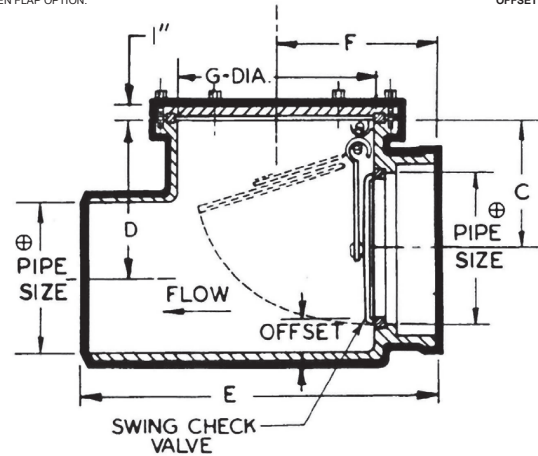
JOSAM 67600 SERIES COATED CAST IRON BACKWATER VALVE, OFFSET TYPE, BRONZE FIXED SWING-CHECK ASSEMBLY, BOLTED GASKETED COVER AND HUB & SPIGOT CONNECTIONS.

## BACKWATER VALVE HUB & SPIGOT SWING-CHECK

SERIES

67600

**NOTE:** SWING-CHECK VALVE NORMALLY HANGS IN CLOSED POSITION BUT CAN BE SET TO HANG OPEN BY SPECIFYING (-15) OPEN FLAP OPTION.



⊕ HUB & SPIGOT DIM. ARE IN ACCORDANCE WITH E.H.C.I. SOIL PIPE STANDARD.

PIPE SIZE	OFFSET	C	D	E	F	G
10"	2	8-1/2	10-1/2	23	10-1/2	13
12"	2	9-1/4	11-1/4	25-3/4	12	15

- 15 OPEN FLAP

DRAWING No. 070108

**JOSAM COMPANY**  
MICHIGAN CITY, INDIANA

NOTES:

A-10159-K

DRAWING No. 070108

**JOSAM COMPANY**  
MICHIGAN CITY, INDIANA

NOTES:

A-14922-K

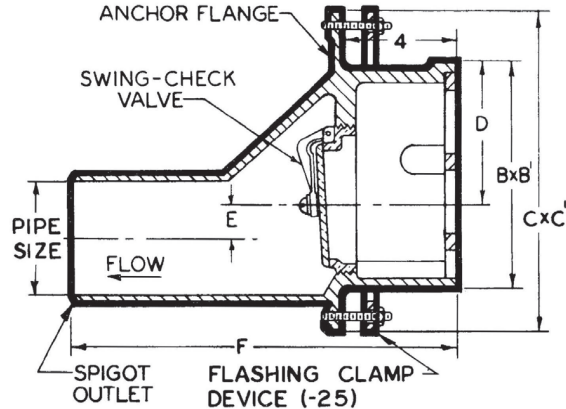
## SPECIFICATION:

JOSAM 67650 SERIES COATED CAST IRON BACKWATER VALVE,  
PIT TYPE, BRONZE SWING-CHECK ASSEMBLY, VERTICAL INLET  
GRATE AND SPIGOT OUTLET CONNECTION.

### BACKWATER VALVE COMBINED DRAIN/SWING-CHECK

SERIES 67650

SECURED COVER  
PIT TYPE



PIPE SIZE	B x B'	C x C'	D	E	F	GRATE FREE AREA
3"	9-5/16 x 7-5/8	12-3/4 x 10-7/8	5-1/8	1-1/8	13	19
4"	9-5/16 x 7-5/8	12-3/4 x 10-7/8	5-1/8	1-1/8	13	19
6"	11 x 8-7/8	14-3/4 x 12-3/8	5-1/2	1-1/8	14	22

- |                          |                               |                          |                                       |
|--------------------------|-------------------------------|--------------------------|---------------------------------------|
| <input type="checkbox"/> | -1 SATIN FINISH NIKALOY FACE  | <input type="checkbox"/> | -25 FLASHING CLAMP DEVICE             |
| <input type="checkbox"/> | -2 SATIN FINISH BRONZE FACE   | <input type="checkbox"/> | -VP SECURED FACE, VANDAL-PROOF SCREWS |
| <input type="checkbox"/> | -5 GALVANIZED CAST IRON PARTS | <input type="checkbox"/> | -LBV LESS BACKWATER VALVE             |

DRAWING No. 07/01/08

**JOSAM COMPANY**  
MICHIGAN CITY, INDIANA

NOTES:

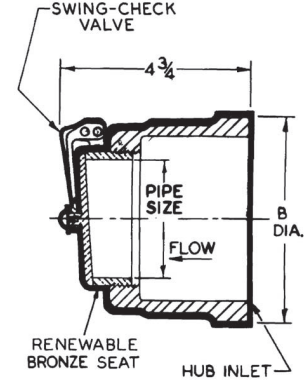
A-10172-K

## SPECIFICATION:

JOSAM 67720 SERIES COATED CAST IRON BACKWATER VALVE,  
TERMINAL TYPE, BRONZE SWING-CHECK ASSEMBLY AND HUB  
INLET CONNECTION.

### BACKWATER VALVE SWING-CHECK TERMINAL TYPE

SERIES 67720



TERMINAL TYPE

**NOTE:** SWING-CHECK VALVE  
NORMALLY HANGS IN CLOSED  
POSITION BUT CAN BE SET TO  
HANG OPEN BY SPECIFYING  
(-15) OPEN FLAP OPTION.

PIPE SIZE	B
3"	5
4"	6-1/4

- 15 OPEN FLAP

DRAWING No. 07/01/08

**JOSAM COMPANY**  
MICHIGAN CITY, INDIANA

NOTES:

A-10169-K

**SPECIFICATION:**

JOSAM 67800 SERIES COATED CAST IRON BACKWATER VALVE, TERMINAL TYPE, BRONZE SWING-CHECK ASSEMBLY AND HUB INLET CONNECTION.

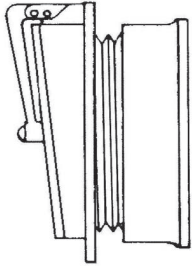
**BACKWATER VALVE  
SWING-CHECK TERMINAL TYPE**

**SERIES**

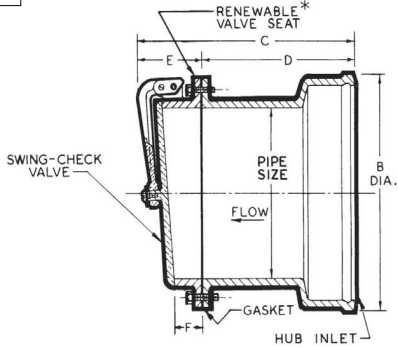
**67800**

TERMINAL TYPE

\* 67808 BACKWATER VALVE USES A CAST IRON SEAT IN PLACE OF A BRONZE SEAT. CAST IRON HUB THREADS INTO FLANGED CAST IRON SEAT



**67808**



**67806**

**NOTE:** SWING-CHECK VALVE NORMALLY HANGS IN CLOSED POSITION BUT CAN BE SET TO HANG OPEN BY SPECIFYING (-15) OPEN FLAP OPTION.



PIPE SIZE	B	C	D	E	F
6"	8-1/8	9-7/8	7-3/4	2-1/8	7/8
8"	10-1/8	15-3/4	11-1/2	4-1/4	1-1/4

- 4 BRONZE SEAT
- 15 OPEN FLAP

DRAWING No. 070108

**JOSAM COMPANY**

MICHIGAN CITY, INDIANA

NOTES:

A-10164-K