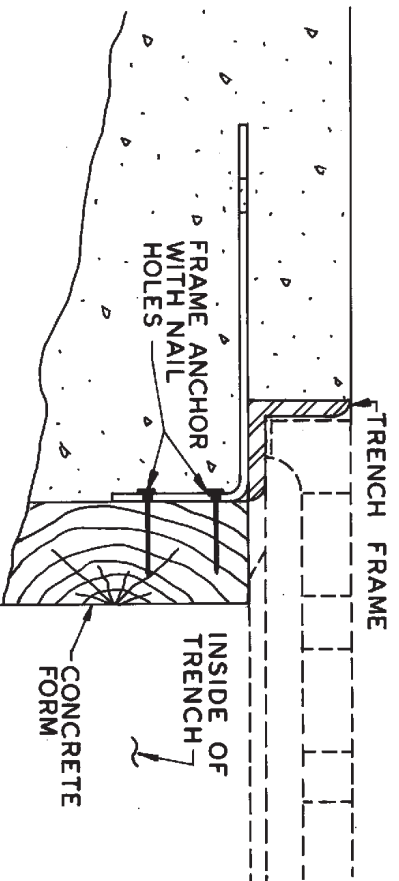


(-11) OPTION, HEAVY-DUTY CONVEX GRATE
allows drainage through openings in top of grate even in the event of perimeter blockages by leaves or debris.



76700 Trench Frame and Grate for poured-in-place trench drains.

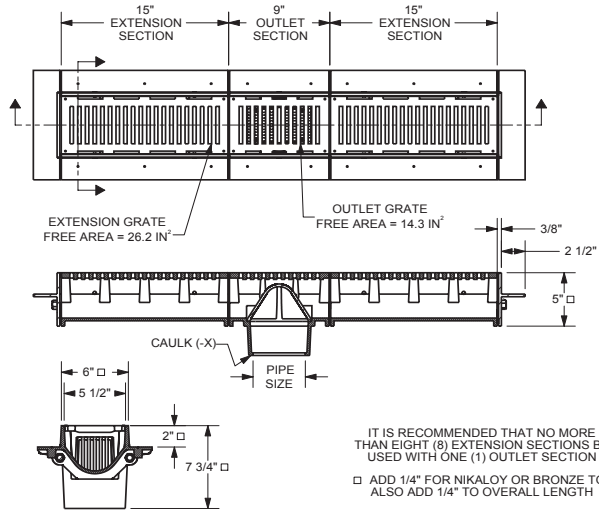
SPECIFICATION:

JOSAM 76000 SERIES COATED CAST IRON RECTANGULAR SECTIONAL TRENCH DRAIN WITH HEAVY-DUTY BODY SECTIONS AND INTEGRAL ANCHOR FLANGE, HEAVY-DUTY LOOSE-SET SUPER-FLO GRATES WITH PERIMETER DRAINAGE SLOTS, SECONDARY LOOSE-SET DOME STRAINER AND BOTTOM INSIDE CAULK OUTLET CONNECTION.

TRENCH DRAIN SUPER-FLO 6" WIDE, RECTANGULAR

SERIES **76000**

SLOT WIDTH 3-1/2" X 5/16"
(-1 AND -2 SLOT WIDTH 1-11/16 X 1/4")



-EXT	EXTENSION SECTION
-1	SATIN FINISH NIKALOY TOP
-2	SATIN FINISH BRONZE TOP
-7	DUCTILE IRON GRATE
-30	FLASHING CLAMP DEVICE
-40	GALVANIZED CAST IRON PARTS
-VP	SECURED GRATE-VANDAL-PROOF SCREWS

PIPE SIZE
2"
3"
4"

FOR INSTALLATIONS EXPOSED TO VEHICULAR TRAFFIC, SPECIFY -VP SECURED GRATE OPTION

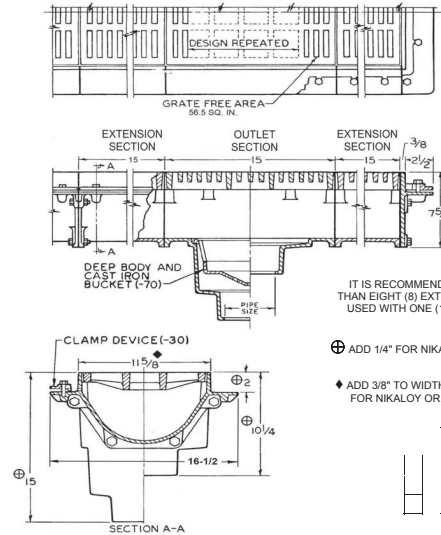
SPECIFICATION:

JOSAM 76010 SERIES COATED CAST IRON RECTANGULAR SECTIONAL TRENCH DRAIN WITH HEAVY-DUTY BODY SECTIONS AND INTEGRAL ANCHOR FLANGE, HEAVY-DUTY LOOSE-SET GRATES AND BOTTOM OUTLET INSIDE-CAULK CONNECTION.

TRENCH DRAIN 12" WIDE, RECTANGULAR

SERIES **76010**

SLOT WIDTH 2-3/4" X 7/16" (-1 & -2 SLOT WIDTH 2-3/4" X 7/16")



-EXT	EXTENSION SECTION
-1	SATIN FINISH NIKALOY TOP
-2	SATIN FINISH BRONZE TOP
-7	DUCTILE IRON GRATE
-11	CONVEX GRATE

-VP	SECURED GRATE, VANDAL-PROOF SCREWS
-30	FLASHING CLAMP DEVICE
-40	GALVANIZED CAST IRON PARTS
-70	SEDIMENT BUCKET, CAST IRON
-40-70	BUCKET, GALVANIZED

DRAWING No. 07/02/08

A-11364-K

JOSAM COMPANY
MICHIGAN CITY, INDIANA

NOTES:

DATE OF LAST CHANGE: 07/01/08

DIMENSIONS ARE SUBJECT TO MANUFACTURERS TOLERANCES AND CHANGE WITHOUT NOTICE. WE CAN ASSUME NO RESPONSIBILITY FOR USE OF SUPERSEDED OR VOID DATA.

JOSAM COMPANY
MICHIGAN CITY, INDIANA

NOTES:

SPECIFICATION:

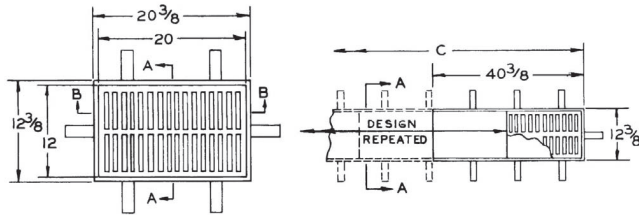
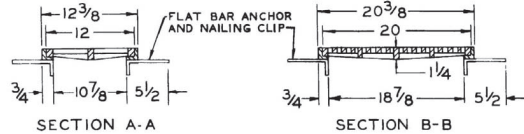
JOSAM 76300 SERIES COATED CAST IRON 12" x 20" RECTANGULAR LIGHT-DUTY SECTIONAL TRENCH GRATE.

TRENCH DRAIN LIGHT-DUTY RECTANGULAR

76300

SERIES

SLOT WIDTH 5" x 1 1/2" (-1 & -8-2 SLOT WIDTH 3-1/4" x 5/16")


 763 _____

(INDICATE ## OF GRATES)

'C' = (# OF GRATES x 20") + 3/8"
INSIDE CHANNEL WIDTH = 'C' - 1 1/2"
GRATE FREE AREA (EACH) 110 SQ IN.
GRATE ONLY DIM'S = 20" x 12" x 5/8"
FRAME MADE OF 3/4" x 3/4" x 1/8" ANGLE

- 1 SATIN FINISH NIKALOY GRATE, STAINLESS STEEL FRAME
- 7 DUCTILE IRON GRATE
- 8-2 ALL BRONZE WITH SATIN FINISH TOP
- VP SECURED GRATE, VANDAL-PROOF SCREWS
- 40 GALVANIZED

DRAWING No. 07/01/08

JOSAM COMPANY
MICHIGAN CITY, INDIANA

NOTES:

A-01957-K

SPECIFICATION:

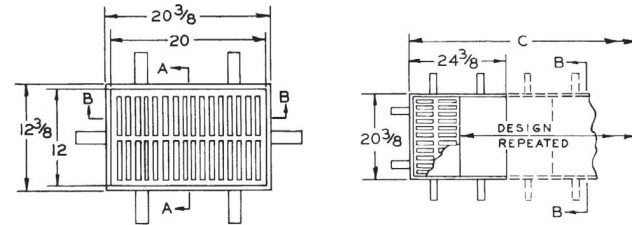
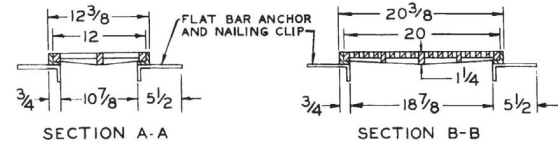
JOSAM 76400 SERIES COATED CAST IRON 20" x 12" RECTANGULAR LIGHT-DUTY SECTIONAL TRENCH GRATE.

TRENCH DRAIN LIGHT-DUTY RECTANGULAR

76400

SERIES

SLOT WIDTH 5" x 1 1/2" (-1 & -8-2 SLOT WIDTH 3-1/4" x 5/16")


 764 _____

(INDICATE ## OF GRATES)

'C' = (# OF GRATES x 12") + 3/8"
INSIDE CHANNEL WIDTH = 'C' - 1 1/2"
GRATE FREE AREA (EACH) 110 SQ IN.
GRATE ONLY DIM'S = 12" x 20" x 5/8"
FRAME MADE OF 3/4" x 3/4" x 1/8" ANGLE

- 1 SATIN FINISH NIKALOY GRATE, STAINLESS STEEL FRAME
- 7 DUCTILE IRON GRATE
- 8-2 ALL BRONZE WITH SATIN FINISH TOP
- VP SECURED GRATE, VANDAL-PROOF SCREWS
- 40 GALVANIZED

DRAWING No. 07/01/08

JOSAM COMPANY
MICHIGAN CITY, INDIANA

NOTES:

A-15574-K

SPECIFICATION:

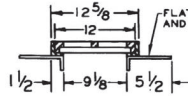
JOSAM 76500 SERIES COATED CAST IRON 12" x 24" RECTANGULAR
MEDIUM-DUTY SECTIONAL TRENCH GRATE.

TRENCH DRAIN MEDIUM-DUTY RECTANGULAR

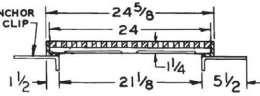
SERIES

76500

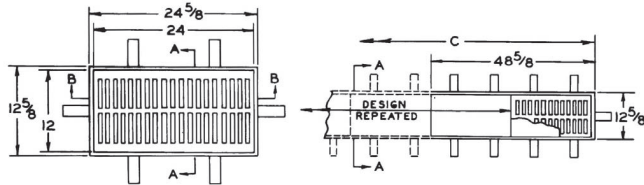
SLOT WIDTH 4-3/8" x 1/2" (-1 & -8-2 SLOT WIDTH 4-3/8" x 1/2")



SECTION A-A



SECTION B-B


 765 _____

(INDICATE ## OF GRATES)

'C' = (# OF GRATES x 24") + 5/8"
INSIDE CHANNEL WIDTH = 'C' - 3"
GRATE FREE AREA (EACH) 90 SQ. IN.
GRATE ONLY DIM'S = 24" x 12" x 5/8"
FRAME MADE OF 1-1/2" x 1-1/2" x 1/4" ANGLE

- | | |
|--------------------------|--|
| <input type="checkbox"/> | -1 SATIN FINISH NIKALOY GRATE, STAINLESS STEEL FRAME |
| <input type="checkbox"/> | -7 DUCTILE IRON GRATE |
| <input type="checkbox"/> | -8-2 ALL BRONZE WITH SATIN FINISH TOP |
| <input type="checkbox"/> | -VP SECURED GRATE, VANDAL-PROOF SCREWS |
| <input type="checkbox"/> | -40 GALVANIZED |

SPECIFICATION:

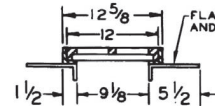
JOSAM 76600 SERIES COATED CAST IRON 24" x 12" RECTANGULAR
MEDIUM-DUTY SECTIONAL TRENCH GRATE.

TRENCH DRAIN MEDIUM-DUTY RECTANGULAR

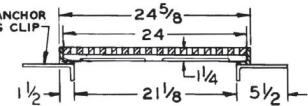
SERIES

76600

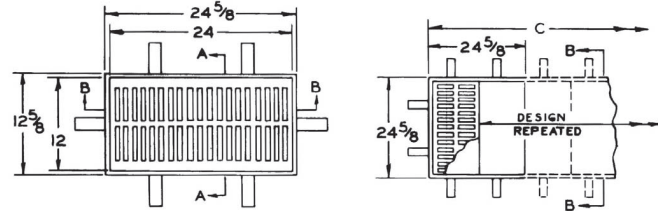
SLOT WIDTH 4-3/8" x 1/2" (-1 & -8-2 SLOT WIDTH 4-3/8" x 1/2")



SECTION A-A



SECTION B-B


 766 _____

(INDICATE ## OF GRATES)

'C' = (# OF GRATES x 12") + 5/8"
INSIDE CHANNEL WIDTH = 'C' - 3"
GRATE FREE AREA (EACH) 90 SQ. IN.
GRATE ONLY DIM'S = 24" x 12" x 5/8"
FRAME MADE OF 1-1/2" x 1-1/2" x 1/4" ANGLE

- | | |
|--------------------------|--|
| <input type="checkbox"/> | -1 SATIN FINISH NIKALOY GRATE, STAINLESS STEEL FRAME |
| <input type="checkbox"/> | -7 DUCTILE IRON GRATE |
| <input type="checkbox"/> | -8-2 ALL BRONZE WITH SATIN FINISH TOP |
| <input type="checkbox"/> | -VP SECURED GRATE, VANDAL-PROOF SCREWS |
| <input type="checkbox"/> | -40 GALVANIZED |

DRAWING No. 07/02/08

JOSAM COMPANY
MICHIGAN CITY, INDIANA

A-02418-K

NOTES:

DRAWING No. 07/01/08

JOSAM COMPANY
MICHIGAN CITY, INDIANA

A-15575-K

NOTES:

SPECIFICATION:

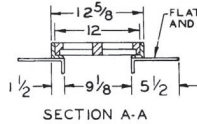
JOSAM 76700 SERIES COATED CAST IRON 12" x 24" RECTANGULAR
HEAVY-DUTY SECTIONAL TRENCH GRATE.

TRENCH DRAIN HEAVY-DUTY RECTANGULAR

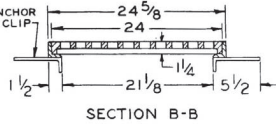
76700

SERIES

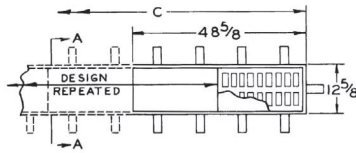
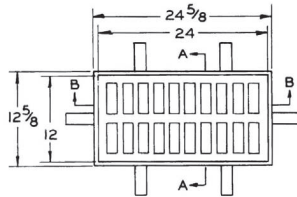
SLOT WIDTH 4-1/4" x 1-1/2" (-1 & -8-2 SLOT WIDTH 4-1/4" x 1-1/2")



SECTION A-A



SECTION B-B


 767 _____

(INDICATE ## OF GRATES)

 $C' = (\text{# OF GRATES} \times 24") + 5/8"$

INSIDE CHANNEL WIDTH = 'C' - 3"

GRATE FREE AREA (EACH) 100 SQ IN.

GRATE ONLY DIM'S = 24" x 12" x 5/8"

FRAME MADE OF 1-1/2" x 1-1/2" x 1/4" ANGLE



- 1 SATIN FINISH NIKALOY GRATE, STAINLESS STEEL FRAME
- 7 DUCTILE IRON GRATE
- 8-2 ALL BRONZE WITH SATIN FINISH TOP
- VP SECURED GRATE, VANDAL-PROOF SCREWS
- 40 GALVANIZED

DRAWING No. 07/01/08

JOSAM COMPANY
MICHIGAN CITY, INDIANA

NOTES:

A-01958-K

SPECIFICATION:

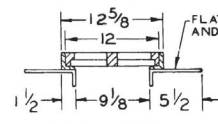
JOSAM 76800 SERIES COATED CAST IRON 24" x 12" RECTANGULAR
HEAVY-DUTY SECTIONAL TRENCH GRATE.

TRENCH DRAIN HEAVY-DUTY RECTANGULAR

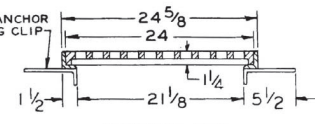
76800

SERIES

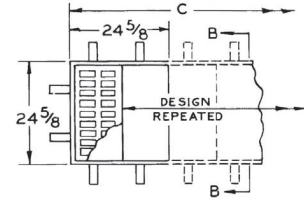
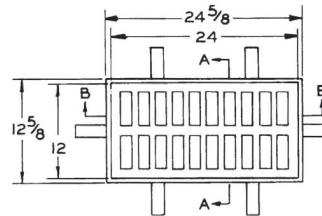
SLOT WIDTH 4-1/4" x 1-1/2" (-1 & -8-2 SLOT WIDTH 4-1/4" x 1-1/2")



SECTION A-A



SECTION B-B


 768 _____

(INDICATE ## OF GRATES)

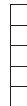
 $C' = (\text{# OF GRATES} \times 12") + 5/8"$

INSIDE CHANNEL WIDTH = 'C' - 3"

GRATE FREE AREA (EACH) 100 SQ IN.

GRATE ONLY DIM'S = 24" x 12" x 5/8"

FRAME MADE OF 1-1/2" x 1-1/2" x 1/4" ANGLE



- 1 SATIN FINISH NIKALOY GRATE, STAINLESS STEEL FRAME
- 7 DUCTILE IRON GRATE
- 8-2 ALL BRONZE WITH SATIN FINISH TOP
- VP SECURED GRATE, VANDAL-PROOF SCREWS
- 40 GALVANIZED

DRAWING No. 07/01/08

JOSAM COMPANY
MICHIGAN CITY, INDIANA

NOTES:

A-15576-K