

SANITARY FLOOR SINKS

SUPER-FLO-SEPTOR® Features

Now, more than ever before, facilities such as hospitals, laboratories and areas where foods are processed and handled, are objectively evaluated for optimum environmental sanitation. Recognizing this requirement, JOSAM developed the SUPER-FLO-SEPTOR® line of Sanitary Floor Sinks.

DOUBLE DRAINAGE OR ANCHORING FLANGE

When this flange is provided, weepholes are automatically furnished to assure the drainage of any secondary moisture which may be present. The additional option of a flashing clamp device assures the positive bonding of the flashing between the double drainage flange and clamp ring.

SUPER-FLO® GRATE AND SANITARY SLOPING RIM

This unique combination insures that the rim portion and side walls of the drain will be washed clean with any flow of liquid.

ACID-RESISTING INTERIOR

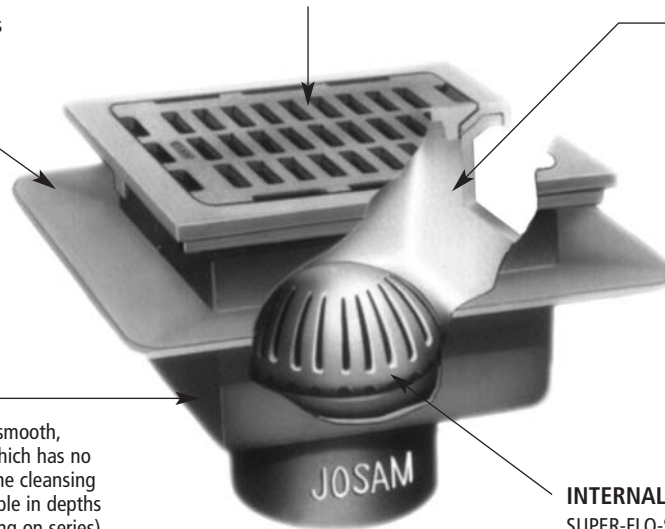
The acid-resisting interior, furnished standard on all SUPER-FLO-SEPTORS®, provides the smooth surface necessary for sanitation and protection from corrosion in food processing applications.

BODY

Sanitation is promoted by the smooth, uniformly contoured interior which has no corners or crevices to escape the cleansing action of drainage flow. Available in depths of 6, 8 and 10 inches (depending on series) to suit every application.

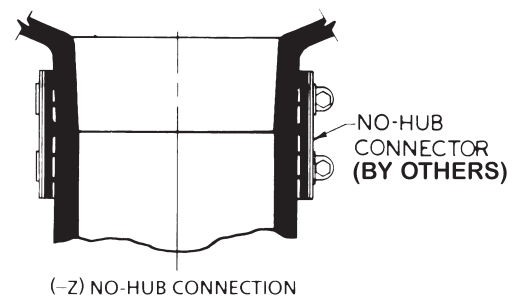
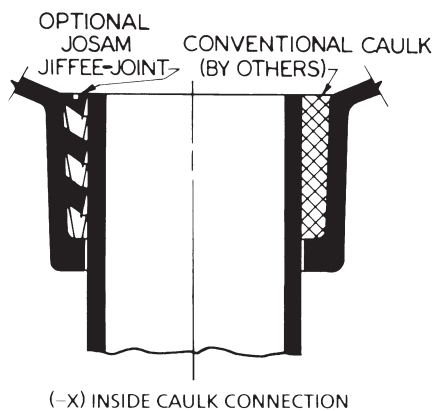
INTERNAL DOME

SUPER-FLO-SEPTORS® have an internal dome which acts as a secondary strainer to intercept debris which could cause blockage of drain lines. The dome is easily removed to facilitate cleaning.



Outlet Connections

JOSAM SUPER-FLO-SEPTORS® are furnished with outlets for connection to extra-heavy, service weight or no-hub pipe. The timesaving, economical JIFFEE-JOINT is used for inside caulk connections. For outlet type, specify (-X) for inside caulk outlet and (-Z) for no-hub spigot outlet.



SQUARE • ARE TOPS

49300
8" Top, 6" Deep Body
49300-LF Less Flange



Page 162

49320A
12" Top, 6" Deep Body
49320A-LF Less Flange



Page 164

49340A
12" Top, 8" Deep Body
49340A-LF Less Flange.



Page 166

49360A
12" Top, 10" Deep Body
49360A-LF Less Flange



Page 168

49400
16" Top, 6" Deep Body
49400-LF Less Flange



Page 170

49420
16" Top, 12" Deep Body
49420-LF Less Flange



Page 172

SQUARE • NICKEL BRONZE TOPS

49300-NB
8" Top, 6" Deep Body
49300-LF-NB Less Flange



Page 163

49320A-NB
12" Top, 6" Deep Body
49320A-LF-NB Less Flange



Page 165

49340A-NB
12" Top, 8" Deep Body
49340A-LF-NB Less Flange



Page 167

49360A-NB
12" Top, 10" Deep Body
49360A-LF-NB Less Flange



Page 169

49400-NB
16" Top, 6" Deep Body
49400-LF-NB Less Flange



Page 171

49420-NB
16" Top, 12" Deep Body
49420-LF-NB Less Flange



Page 173

ROUND • ARE TOPS

49500
8" Top, 3" Deep Body
49500-LF Less Flange



Page 174

49520A
8" Top, 6" Deep Body
49520A-LF Less Flange



Page 176

49580A
12" Top, 8" Deep Body
49580A-LF Less Flange



Page 178

49500-NB
8" Top, 3" Deep Body
49500-LF-NB Less Flange



Page 175

49520A-NB
8" Top, 6" Deep Body
49520A-LF-NB Less Flange



Page 177

49580A-NB
12" Top, 8" Deep Body
49580A-LF-NB Less Flange



Page 179

ROUND • NICKEL BRONZE TOPS

RECTANGULAR

49700
4" x 8" Top, 4" Deep Body
49700-LF Less Flange



Page 180

49700-NB
4" x 8" Top, 4" Deep Body
49700-LF-NB Less Flange



Page 181

49720
6" X 12" Top, 7" Deep Body
49720-LF Less Flange



Page 182

49720-NB
6" x 12" Top, 7" Deep Body
49720-LF-NB Less Flange



Page 183

CAN WASH DRAINS

49850
12" Top Flushing Rim
Hinged Grate



Page 184

49870A
12" Top 8" Deep Body
Spray Nozzle Assembly



Page 184

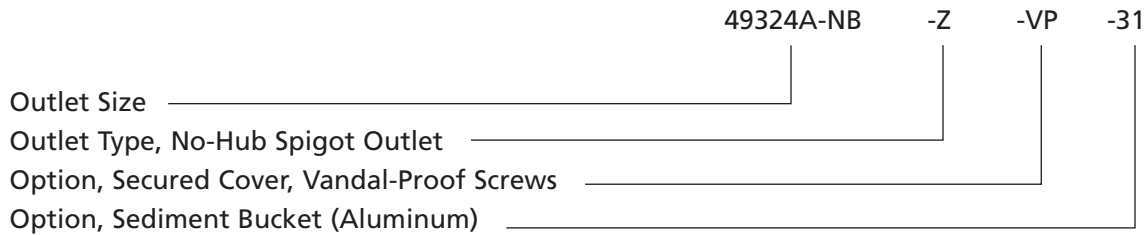
SANITARY FLOOR SINKS

How To Order

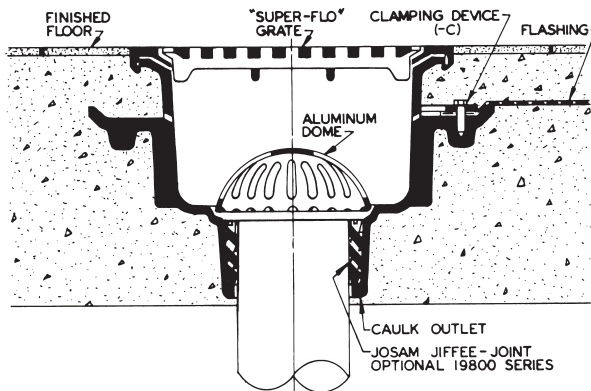
Unless optional materials are specified, standard material shown in Specification will be provided. Last digit indicates outlet size.

EXAMPLE: Series No. 49320A-NB

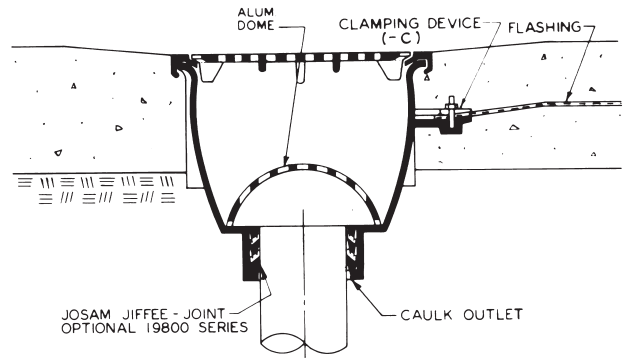
Type No. 49324A-NB



Typical Installations

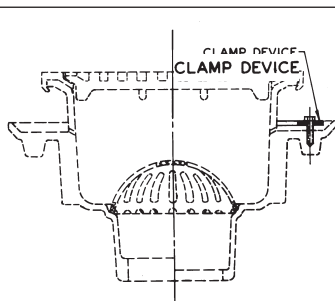


49320A-NB Series SUPER-FLO-SEPTOR® Floor Sink shown installed in a heavy-duty structural concrete finish floor.



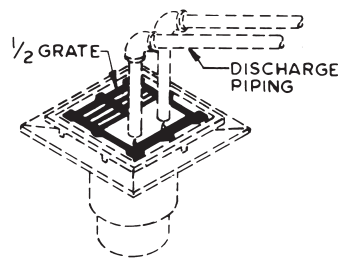
49580A-NB Series SUPER-FLO-SEPTOR® Floor Sink shown installed in a poured concrete floor on the ground level.

Options



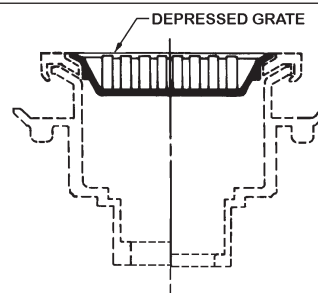
(-C) BOLTED FLASHING CLAMP DEVICE

used on sanitary floor sinks with double drainage flanges to provide a positive bond of the waterproofing membrane to the floor sink body.



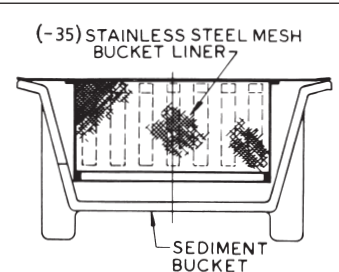
(-3) OPTION, 1/2 GRATE

receives discharge lines for condensate wastes or from equipment with additional drainage from floor area. The open portion can be situated under equipment while grate portion is exposed to traffic.



(-8) OPTION, DEPRESSED GRATE

serves as a shallow sediment bucket to intercept solids in areas where limited space between floor sink and equipment prevents the use of a standard removable bucket.



(-31) OPTION, ALUMINUM SEDIMENT BUCKET

for use in food processing areas producing solids such as peelings, food scraps, seeds, pits and other debris which could cause drain line blockage.

49300 SERIES

SUPER-FLO® 8" SQUARE TOP, 6" DEEP

APPLICATION

For use in non-traffic areas where ultimate sanitation is desired, such as kitchens, hospitals and food processing plants. The 7-1/4" square grate and medium sump accept moderate flow and the dome strainer intercepts debris which could block the drain line. Double drainage flange serves as an anchor in the sub-floor and redirects secondary moisture to the waste line. It may also be used with a clamp device to assure a bond between the drain and the flashing or waterproof membrane.

SPECIFICATION

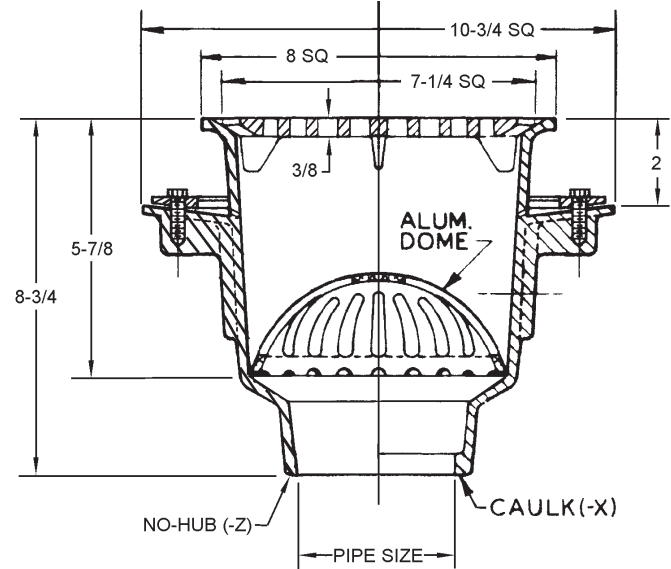
JOSAM 49300 Series square cast iron 5-7/8" deep SUPER-FLO-SEPTOR® Floor Sink with acid-resisting interior, double drainage flange with weepholes, bottom outlet, aluminum internal dome strainer and cast iron, non-traffic, acid-resisting, anti-tilting, SUPER-FLO® Grate.

For Options, See Below

OPTIONS N/A: -VP, -8, -20, -24

TYPE NO.	PIPE SIZE	LBS
49302	2	24
49303	3	24
49304	4	24

SLOT WIDTH 7/16"



GRATE FREE AREA 21 SQ. IN.

FOR OUTLET TYPE, SPECIFY -X or -Z.

49300-LF SERIES

Less Flange

APPLICATION

For use in non-traffic areas where ultimate sanitation is desired, such as kitchens, hospitals and food processing plants. The 7-1/4" square grate and medium sump accept moderate flow and the dome strainer intercepts debris which could block the drain line.

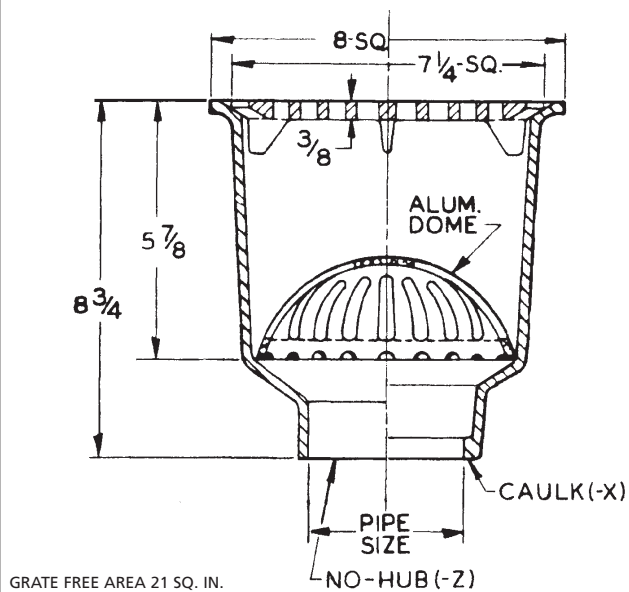
SPECIFICATION

JOSAM 49300-LF Series square cast iron 5-7/8" deep SUPER-FLO-SEPTOR® Floor Sink with acid-resisting interior, bottom outlet, aluminum internal dome strainer and cast iron, non-traffic, acid-resisting, anti-tilting, SUPER-FLO® Grate.

OPTIONS N/A: -VP, -8, -20, -24, -C

TYPE NO.	PIPE SIZE	LBS
49302-LF	2	20
49303-LF	3	20
49304-LF	4	21

SLOT WIDTH 7/16"



GRATE FREE AREA 21 SQ. IN.

OPTIONS

- ▼ -LF Less Flange
 - ▼ -NB Nickel Bronze Traffic Top
 - LG Less Grate
 - 3 1/2 Grate
 - 4 3/4 Grate
 - 7 Full Grate with 2-1/2" Center Opening
 - 8 Stainless Steel Depressed Grate, NB
 - VP Secured Grate, Vandal-Proof Screws, NB
 - 16 Grate with 4" Round Funnel
 - 17 Grate with 6" Round Funnel
 - 18 Grate with 9" x 3-1/2" Oval Funnel
 - 20 Solid Nikaloy Cover, NB
 - 24 Chained Grate, NB
 - 31 Sediment Bucket (Aluminum)
 - 33 Sediment Bucket (A.R. Finish)
 - ▽ -35 Stainless Steel Mesh Bucket Liner
 - 43 Internal Dome Strainer (A.R. Finish)
 - 45 Less Internal Dome Strainer
 - 55 1/2" Primer Adapter, 88450 Provided
 - C Clamp Device, 49300, 49300-NB
- OUTLETS**
- X Inside Caulk Outlet
 - Z No-Hub Outlet
- ▽ Specify -31 or -33 Bucket

49300-NB SERIES

with -NB Nikaloy Traffic Top

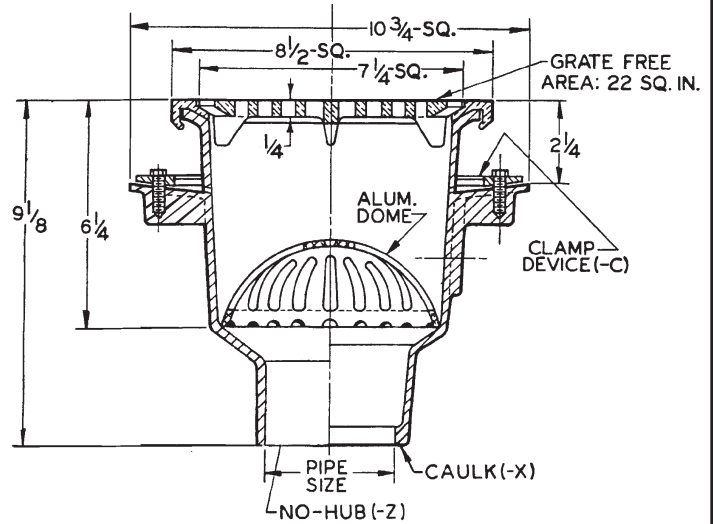
APPLICATION

For use in areas where pedestrian and medium weight wheel loads are anticipated and ultimate sanitation is desired, such as kitchens, hospitals and food processing plants. The 7-1/4" square grate and medium sump accept moderate flow and the dome strainer intercepts debris which could block the drain line. Double drainage flange serves as an anchor in the sub-floor and redirects secondary moisture to the waste line. It may also be used with a clamp device to assure a bond between the drain and the flashing or waterproof membrane.

SPECIFICATION

JOSAM 49300-NB Series square cast iron 6-1/4" deep SUPER-FLO-SEPTOR® Floor Sink with acid-resisting interior, double drainage flange with weepholes, bottom outlet, aluminum internal dome strainer, Nikaloy sanitary sloped rim and Nikaloy light-duty, anti-tilting, SUPER-FLO® Grate.

SLOT WIDTH 1/2"



GRATE FREE AREA 22 SQ. IN.

FOR OUTLET TYPE, SPECIFY -X or -Z.

TYPE NO.	PIPE SIZE	LBS.
49302-NB	2	27
49303-NB	3	27
49304-NB	4	27

49300-LF-NB SERIES

Less Flange, with -NB Nikaloy Traffic Top

APPLICATION

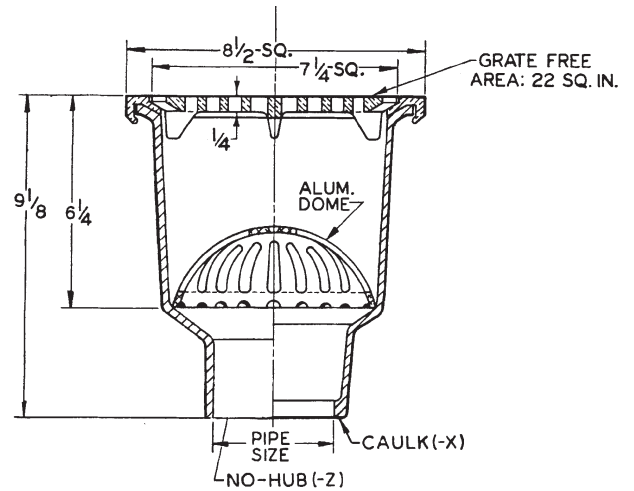
For use in areas where pedestrian and medium weight wheel loads are anticipated and ultimate sanitation is desired, such as kitchens, hospitals and food processing plants. The 7-1/4" square grate and medium sump accept moderate flow and the dome strainer intercepts debris which could block the drain line.

SPECIFICATION

JOSAM 49300-LF-NB Series square cast iron 6-1/4" deep SUPER-FLO-SEPTOR® Floor Sink with acid-resisting interior, aluminum internal dome strainer, Nikaloy sanitary sloped rim and Nikaloy light-duty, anti-tilting, SUPER-FLO® Grate.

OPTION N/A: -C

SLOT WIDTH 1/2"



GRATE FREE AREA 22 SQ. IN.

FOR OUTLET TYPE, SPECIFY -X or -Z.

TYPE NO.	PIPE SIZE	LBS.
49302-LF-NB	2	24
49303-LF-NB	3	24
49304-LF-NB	4	25

49320A SERIES

12" SQUARE TOP, 6" DEEP

APPLICATION

For use in non-traffic areas where ultimate sanitation is desired, such as kitchens, hospitals and food processing plants. The 9" square grate and medium sump accept moderate flow and the dome strainer intercepts debris which could block the drain line. Double drainage flange serves as an anchor in the sub-floor and redirects secondary moisture to the waste line. It may also be used with a clamp device to assure a bond between the drain and the flashing or waterproof membrane.

SPECIFICATION

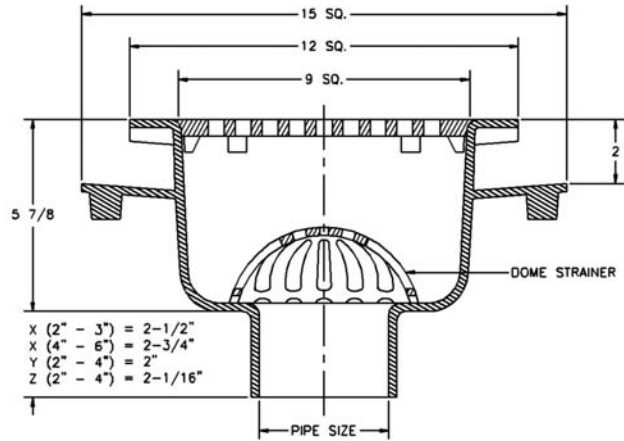
JOSAM 49320A Series square cast iron 5-7/8" deep SUPER-FLO-SEPTOR® Floor Sink with acid-resisting interior, double drainage flange with weepholes, bottom outlet, aluminum internal dome strainer and cast iron, non-traffic, acid-resisting, anti-tilting grate.

For Options, See Below

OPTIONS N/A: -VP, -8, -20, -24

TYPE NO.	PIPE SIZE	LBS.
49322A	2	45
49323A	3	45
49324A	4	45
49326A	6	45

SLOT WIDTH 3/8"



GRATE FREE AREA 26 SQ. IN.

FOR OUTLET TYPE, SPECIFY -X, -Y or -Z.

49320A-LF SERIES

Less Flange

APPLICATION

For use in non-traffic areas where ultimate sanitation is desired, such as kitchens, hospitals and food processing plants. The 9" square grate and medium sump accept moderate flow and the dome strainer intercepts debris which could block the drain line.

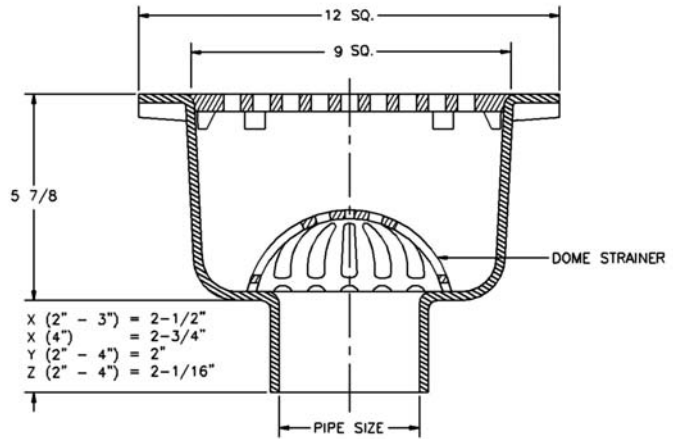
SPECIFICATION

JOSAM 49320A-LF Series square cast iron 5-7/8" deep SUPER-FLO-SEPTOR® Floor Sink with acid-resisting interior, bottom outlet, aluminum internal dome strainer and cast iron, non-traffic, acid-resisting, anti-tilting grate.

OPTIONS N/A: -VP, -8, -20, -24, -C

TYPE NO.	PIPE SIZE	LBS.
49322A-LF	2	28
49323A-LF	3	28
49324A-LF	4	28
49326A-LF	6	28

SLOT WIDTH 3/8"



GRATE FREE AREA 26 SQ. IN.

FOR OUTLET TYPE, SPECIFY -X, -Y or -Z.

OPTIONS

- ▼ -LF Less Flange
- ▼ -NB Nickel Bronze Traffic Top
- LG Less Grate
- 3 1/2 Grate
- 4 3/4 Grate
- 5 Nikaloy Extra Heavy-Duty Grate & Rim (Not SUPER-FLO® Design)
- 7 Full Grate with 2-1/2" Center Opening
- 8 Stainless Steel Depressed Grate, NB
- VP Secured Grate, Vandal-Proof Screws, NB
- 15 Stainless Steel Rim and Grate, NB
- 16 Grate with 4" Round Funnel
- 17 Grate with 6" Round Funnel
- 18 Grate with 9" x 3-1/2" Oval Funnel
- 20 Solid Nikaloy Cover, NB
- 24 Chained Grate, NB
- 31 Sediment Bucket (Aluminum)
- 33 Sediment Bucket (A.R. Finish)
- ▽ -35 Stainless Steel Mesh Bucket Liner
- 43 Internal Dome Strainer (A.R. Finish)
- 45 Less Internal Dome Strainer
- 55 1/2" Primer Adaptor, 88450 Provided for 2" - 4"
- 1/2" Primer Tap, 6"
- C Clamp Device, 49320A, 49320A-NB

OUTLETS

- X Inside Caulk Outlet
- Y Hub Outlet with Gasket, 2"-4"
- Z No-Hub Outlet

▽ Specify -31 or -33 Bucket

49320A-NB SERIES

with -NB Nikaloy Traffic Top

APPLICATION

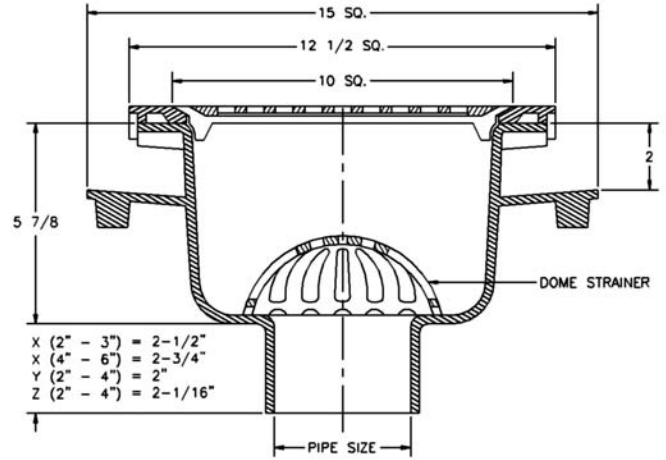
For use in areas where pedestrian and medium weight wheel loads are anticipated and ultimate sanitation is desired, such as kitchens, hospitals and food processing plants. The 10" square grate and medium sump accept moderate flow and the dome strainer intercepts debris which could block the drain line. Double drainage flange serves as an anchor in the sub-floor and redirects secondary moisture to the waste line. It may also be used with a clamp device to assure a bond between the drain and the flashing or waterproof membrane.

SPECIFICATION

JOSAM 49320A-NB Series square cast iron 6-1/4" deep SUPER-FLO-SEPTOR® Floor Sink with acid-resisting interior, double drainage flange with weepholes, bottom outlet, aluminum internal dome strainer, Nikaloy sanitary sloped rim and Nikaloy light-duty, anti-tilting, SUPER-FLO® Grate.

TYPE NO.	PIPE SIZE	LBS.
49322A-NB	2	45
49323A-NB	3	45
49324A-NB	4	45
49326A-NB	6	45

SLOT WIDTH 1/2"



GRATE FREE AREA 35 SQ. IN.

FOR OUTLET TYPE, SPECIFY -X, -Y or -Z.

49320A-LF-NB SERIES

Less Flange, with -NB Nikaloy Traffic Top

APPLICATION

For use in areas where pedestrian and medium weight wheel loads are anticipated and ultimate sanitation is desired, such as kitchens, hospitals and food processing plants. The 10" square grate and medium sump accept moderate flow and the dome strainer intercepts debris which could block the drain line.

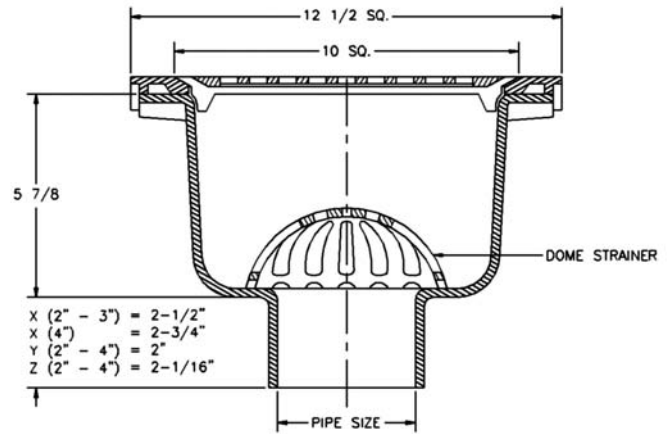
SPECIFICATION

JOSAM 49320A-LF-NB Series square cast iron 6-1/4" deep SUPER-FLO-SEPTOR® Floor Sink with acid-resisting interior, bottom outlet, aluminum internal dome strainer, Nikaloy sanitary sloped rim and Nikaloy light-duty, anti-tilting, SUPER-FLO® Grate.

OPTION N/A: -C

TYPE NO.	PIPE SIZE	LBS.
49322A-LF-NB	2	28
49323A-LF-NB	3	28
49324A-LF-NB	4	28
49326A-LF-NB	6	28

SLOT WIDTH 1/2"



GRATE FREE AREA 35 SQ. IN.

FOR OUTLET TYPE, SPECIFY -X, -Y or -Z.

49340A SERIES

12" SQUARE TOP, 8" DEEP

APPLICATION

For use in non-traffic areas where ultimate sanitation is desired, such as kitchens, hospitals and food processing plants. The 10" square grate and medium sump accept moderate to heavy flow and the dome strainer intercepts debris which could block the drain line. Double drainage flange serves as an anchor in the sub-floor and redirects secondary moisture to the waste line. It may also be used with a clamp device to assure a bond between the drain and the flashing or waterproof membrane.

SPECIFICATION

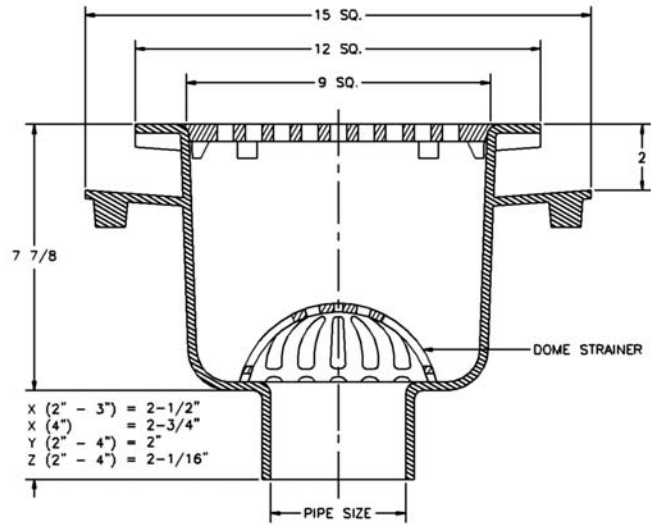
JOSAM 49340A Series square cast iron 8" deep SUPER-FLO-SEPTOR® Floor Sink with acid-resisting interior, double drainage flange with weepholes, bottom outlet, aluminum internal dome strainer and cast iron, non-traffic, acid-resisting, anti-tilting grate.

For Options, See Below

OPTIONS N/A: -VP, -8, -20, -24

TYPE NO.	PIPE SIZE	LBS.
49342A	2	50
49343A	3	50
49344A	4	50

SLOT WIDTH 3/8"



GRATE FREE AREA 26 SQ. IN.

FOR OUTLET TYPE, SPECIFY -X, -Y or -Z.

49340A-LF SERIES

Less Flange

APPLICATION

For use in non-traffic areas where ultimate sanitation is desired, such as kitchens, hospitals and food processing plants. The 10" square grate and medium sump accept moderate to heavy flow and the dome strainer intercepts debris which could block the drain line.

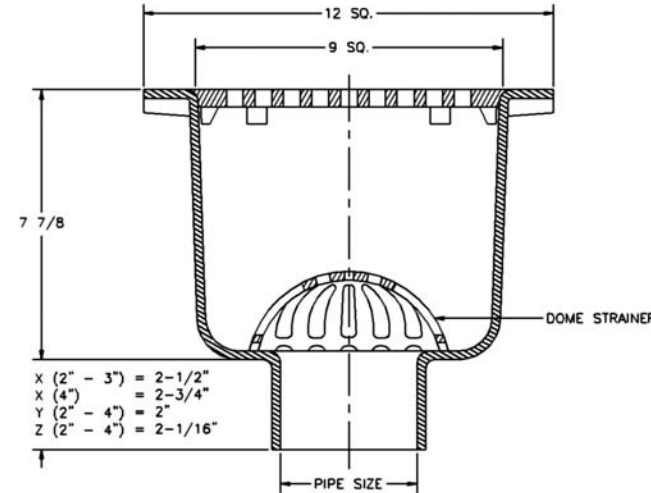
SPECIFICATION

JOSAM 49340A-LF Series square cast iron 8" deep SUPER-FLO-SEPTOR® Floor Sink with acid-resisting interior, bottom outlet, aluminum internal dome strainer and cast iron, non-traffic, acid-resisting, anti-tilting grate.

OPTIONS N/A: -VP, -8, -20, -24, -C

TYPE NO.	PIPE SIZE	LBS.
49342A-LF	2	33
49343A-LF	3	33
49344A-LF	4	33

SLOT WIDTH 3/8"



GRATE FREE AREA 26 SQ. IN.

FOR OUTLET TYPE, SPECIFY -X, -Y or -Z.

OPTIONS

- ▼ -LF Less Flange
 - ▼ -NB Nickel Bronze Traffic Top
 - LG Less Grate
 - 3 1/2 Grate
 - 4 3/4 Grate
 - 5 Nikaloy Extra Heavy-Duty Grate & Rim (Not SUPER-FLO® Design)
 - 7 Full Grate with 2-1/2" Center Opening
 - 8 Stainless Steel Depressed Grate, NB
 - VP Secured Grate, Vandal-Proof Screws, NB
 - 15 Stainless Steel Rim and Grate
 - 16 Grate with 4" Round Funnel
 - 17 Grate with 6" Round Funnel
 - 18 Grate with 9" x 3-1/2" Oval Funnel
 - 20 Solid Nikaloy Cover, NB
 - 24 Chained Grate, NB
 - 31 Sediment Bucket (Aluminum)
 - 33 Sediment Bucket (A.R. Finish)
 - ▽ -35 Stainless Steel Mesh Bucket Liner
 - 43 Internal Dome Strainer (A.R. Finish)
 - 45 Less Internal Dome Strainer
 - 55 1/2" Primer Adapter, 88450 Provided
 - C Clamp Device, 49340A, 49340A-NB
- OUTLETS**
- X Inside Caulk Outlet
 - Y Hub Outlet with Gasket
 - Z No-Hub Outlet
- ▽ Specify -31 or -33 Bucket

49340A-NB SERIES

with -NB Nikaloy Traffic Top

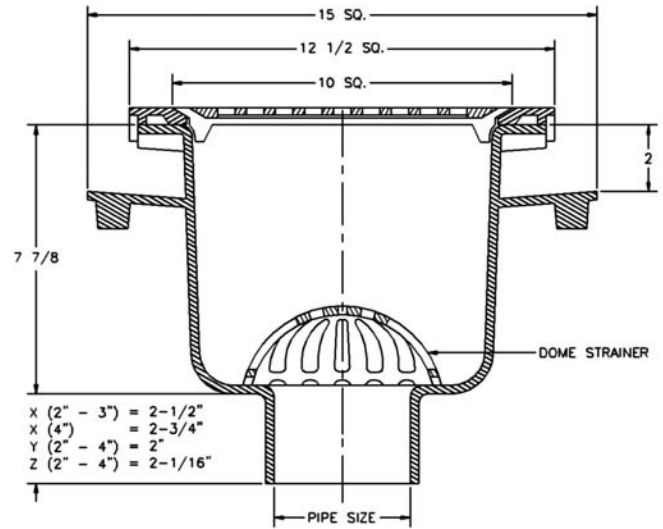
APPLICATION

For use in areas where pedestrian and medium weight wheel loads are anticipated and ultimate sanitation is desired, such as kitchens, hospitals and food processing plants. The 10" square grate and medium sump accept moderate to heavy flow and the dome strainer intercepts debris which could block the drain line. Double drainage flange serves as an anchor in the sub-floor and redirects secondary moisture to the waste line. It may also be used with a clamp device to assure a bond between the drain and the flashing or waterproof membrane.

SPECIFICATION

JOSAM 49340A-NB Series square cast iron 8-3/8" deep SUPER-FLO-SEPTOR® Floor Sink with acid-resisting interior, double drainage flange with weepholes, bottom outlet, aluminum internal dome strainer, Nikaloy sanitary sloped rim and Nikaloy, light-duty, anti-tilting, SUPER-FLO® Grate.

SLOT WIDTH 1/2"



GRATE FREE AREA 35 SQ. IN.

FOR OUTLET TYPE, SPECIFY -X, -Y or -Z.

TYPE NO.	PIPE SIZE	LBS.
49342A-NB	2	50
49343A-NB	3	50
49344A-NB	4	50

49340A-LF-NB SERIES

Less Flange, with -NB Nikaloy Traffic Top

APPLICATION

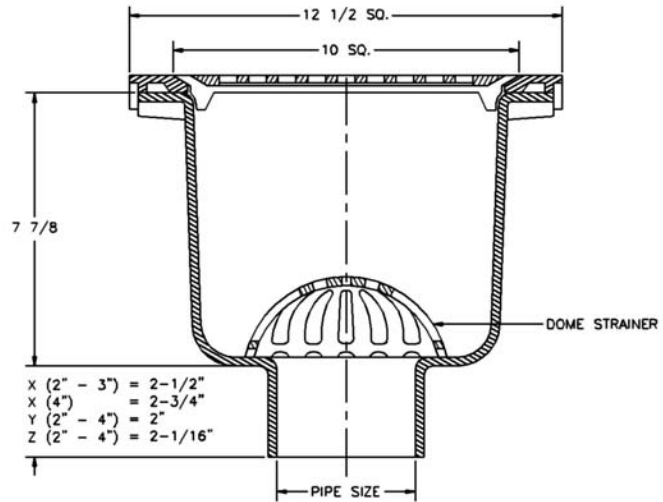
For use in areas where pedestrian and medium weight wheel loads are anticipated and ultimate sanitation is desired, such as kitchens, hospitals and food processing plants. The 10" square grate and medium sump accept moderate to heavy flow and the dome strainer intercepts debris which could block the drain line.

SPECIFICATION

JOSAM 49340A-LF-NB Series square cast iron 8-3/8" deep SUPER-FLO-SEPTOR® Floor Sink with acid-resisting interior, bottom outlet, aluminum internal dome strainer, Nikaloy sanitary sloped rim and Nikaloy, light-duty, anti-tilting, SUPER-FLO® Grate.

OPTION N/A: -C

SLOT WIDTH 1/2"



GRATE FREE AREA 35 SQ. IN.

FOR OUTLET TYPE, SPECIFY -X, -Y or -Z.

TYPE NO.	PIPE SIZE	LBS.
49342A-LF-NB	2	33
49343A-LF-NB	3	33
49344A-LF-NB	4	33

49360A SERIES

12" SQUARE TOP, 10" DEEP

APPLICATION

For use in non-traffic areas where ultimate sanitation is desired, such as kitchens, hospitals and food processing plants. The 9" square grate and deep sump accept heavy flow and the dome strainer intercepts debris which could block the drain line. Double drainage flange serves as an anchor in the sub-floor and redirects secondary moisture to the waste line. It may also be used with a clamp device to assure a bond between the drain and the flashing or waterproof membrane.

SPECIFICATION

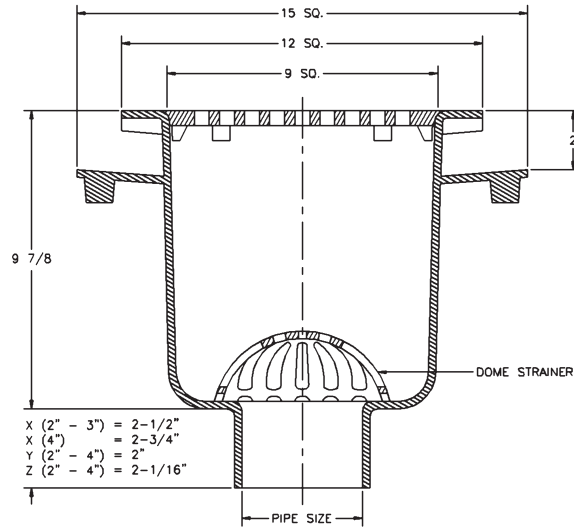
JOSAM 49360A Series square cast iron 9-7/8" deep SUPER-FLO-SEPTOR® Floor Sink with acid-resisting interior, double drainage flange with weepholes, bottom outlet, aluminum internal dome strainer and cast iron, non-traffic, acid-resisting, anti-tilting grate.

For Options, See Below

OPTIONS N/A: -VP, -8, -20, -24

TYPE NO.	PIPE SIZE	LBS.
49362A	2	62
49363A	3	65
49364A	4	65

SLOT WIDTH 3/8"



GRATE FREE AREA 26 SQ. IN.

FOR OUTLET TYPE, SPECIFY -X, -Y or -Z.

49360A-LF SERIES

Less Flange

APPLICATION

For use in non-traffic areas where ultimate sanitation is desired, such as kitchens, hospitals and food processing plants. The 9" square grate and deep sump accept heavy flow and the dome strainer intercepts debris which could block the drain line.

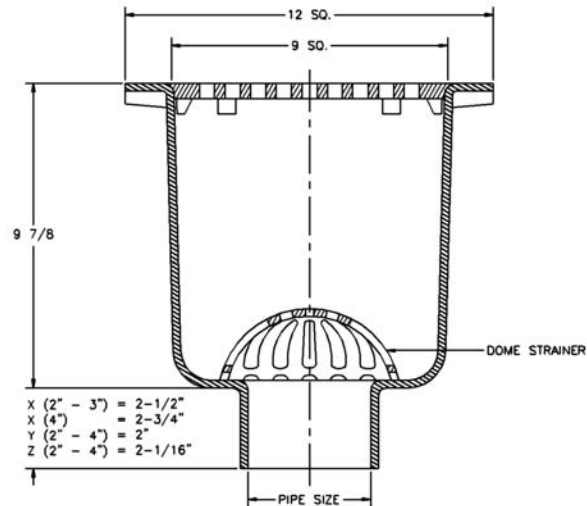
SPECIFICATION

JOSAM 49360A-LF Series square cast iron 9-7/8" deep SUPER-FLO-SEPTOR® Floor Sink with acid-resisting interior, bottom outlet, aluminum internal dome strainer and cast iron, non-traffic, acid-resisting, anti-tilting grate.

OPTIONS N/A: -VP, -8, -20, -24, -C

TYPE NO.	PIPE SIZE	LBS.
49362A-LF	2	53
49363A-LF	3	55
49364A-LF	4	56

SLOT WIDTH 3/8"



GRATE FREE AREA 26 SQ. IN.

FOR OUTLET TYPE, SPECIFY -X, -Y or -Z.

OPTIONS

- ▼ -LF Less Flange
 - ▼ -NB Nickel Bronze Traffic Top
 - LG Less Grate
 - 3 1/2" Grate
 - 4 3/4" Grate
 - 5 Nikaloy Extra Heavy-Duty Grate & Rim (Not SUPER-FLO® Design)
 - 7 Full Grate with 2-1/2" Center Opening
 - 8 Stainless Steel Depressed Grate, NB
 - VP Secured Grate, Vandal-Proof Screws, NB
 - 15 Stainless Steel Rim and Grate
 - 16 Grate with 4" Round Funnel
 - 17 Grate with 6" Round Funnel
 - 18 Grate with 9" x 3-1/2" Oval Funnel
 - 20 Solid Nikaloy Cover, NB
 - 24 Chained Grate, NB
 - 31 Sediment Bucket (Aluminum)
 - 32 Shallow Sediment Bucket (Aluminum)
 - 33 Sediment Bucket (A.R. Finish)
 - ▽ -35 Stainless Steel Mesh Bucket Liner
 - 43 Internal Dome Strainer (A.R. Finish)
 - 45 Less Internal Dome Strainer
 - 55 1/2" Primer Adapter, 88450 Provided
 - C Clamp Device, 49360A, 49360A-NB
- OUTLETS**
- X Inside Caulk Outlet
 - Y Hub Outlet with Gasket
 - Z No-Hub Outlet
- ▽ Specify -31 or -33 Bucket

49360A-NB SERIES

with -NB Nikaloy Traffic Top

APPLICATION

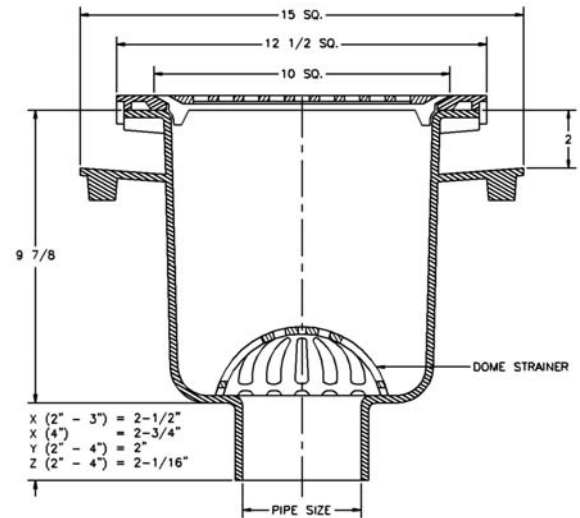
For use in areas where pedestrian and medium weight wheel loads are anticipated and ultimate sanitation is desired, such as kitchens, hospitals and food processing plants. The 10" square grate and deep sump accept heavy flow and the dome strainer intercepts debris which could block the drain line. Double drainage flange serves as an anchor in the sub-floor and redirects secondary moisture to the waste line. It may also be used with a clamp device to assure a bond between the drain and the flashing or waterproof membrane.

SPECIFICATION

JOSAM 49360A-NB Series square cast iron 10-1/4" deep SUPER-FLO-SEPTOR® Floor Sink with acid-resisting interior, double drainage flange with weepholes, bottom outlet, aluminum internal dome strainer, Nikaloy sanitary sloped rim and Nikaloy light-duty, anti-tilting, SUPER-FLO® Grate.

TYPE NO.	PIPE SIZE	LBS.
49362A-NB	2	69
49363A-NB	3	72
49364A-NB	4	72

SLOT WIDTH 1/2"



GRATE FREE AREA 35 SQ. IN.

FOR OUTLET TYPE, SPECIFY -X, -Y or -Z.

49360A-LF-NB SERIES

Less Flange, with -NB Nikaloy Traffic Top

APPLICATION

For use in areas where pedestrian and medium weight wheel loads are anticipated and ultimate sanitation is desired, such as kitchens, hospitals and food processing plants. The 10" square grate and deep sump accept heavy flow and the dome strainer intercepts debris which could block the drain line.

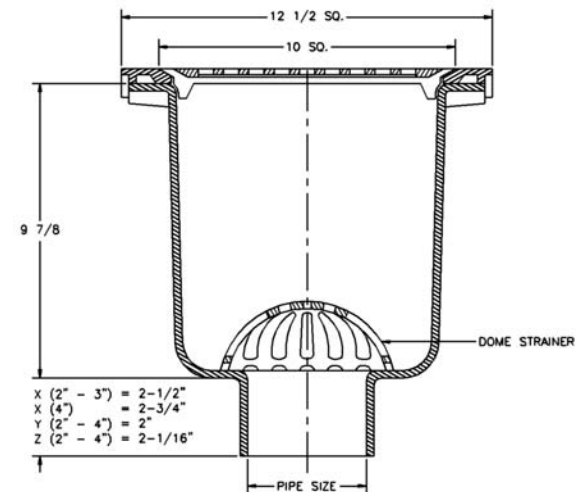
SPECIFICATION

JOSAM 49360A-LF-NB Series square cast iron 10-1/4" deep SUPER-FLO-SEPTOR® Floor Sink with acid-resisting interior, bottom outlet, aluminum internal dome strainer, Nikaloy sanitary sloped rim and Nikaloy light-duty, anti-tilting, SUPER-FLO® Grate.

OPTION N/A: -C

TYPE NO.	PIPE SIZE	LBS.
49362A-LF-NB	2	60
49363A-LF-NB	3	62
49364A-LF-NB	4	63

SLOT WIDTH 1/2"



GRATE FREE AREA 35 SQ. IN.

FOR OUTLET TYPE, SPECIFY -X, -Y or -Z.

49400 SERIES

16" SQUARE TOP, 6" DEEP

APPLICATION

For use in non-traffic areas where ultimate sanitation is desired, such as kitchens, hospitals, laundries and food processing plants. The 14-1/2" square grate and medium sump accept heavy flow and the dome strainer intercepts debris which could block the drain line. Double drainage flange serves as an anchor in the sub-floor and redirects secondary moisture to the waste line. It may also be used with a clamp device to assure a bond between the drain and the flashing or waterproof membrane.

SPECIFICATION

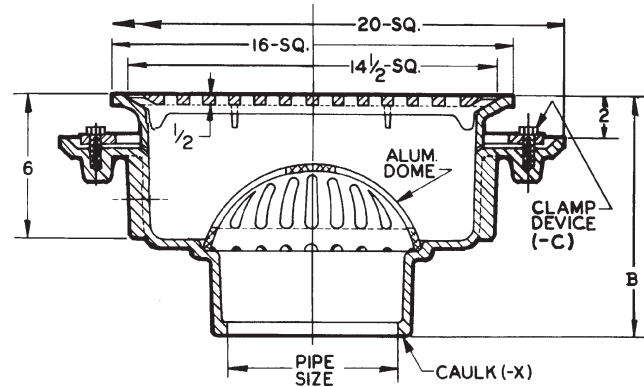
JOSAM 49400 Series square cast iron 6" deep SUPER-FLO-SEPTOR® Floor Sink with acid-resisting interior, double drainage flange with weepholes, bottom outlet, aluminum internal dome strainer, cast iron, non-traffic, acid-resisting, anti-tilting SUPER-FLO® Grate.

For Options, See Below

OPTION N/A: -VP

TYPE NO.	PIPE SIZE	B DIM.	LBS.
49403	3	9-1/4	99
49404	4	9-1/2	96
49406	6	9-7/8	97

SLOT WIDTH 9/16"



GRATE FREE AREA 94 SQ. IN.

FOR OUTLET TYPE, SPECIFY -X.

49400-LF SERIES

Less Flange

APPLICATION

For use in non-traffic areas where ultimate sanitation is desired, such as kitchens, hospitals, laundries and food processing plants. The 14-1/2" square grate and medium sump accept heavy flow and the dome strainer intercepts debris which could block the drain line.

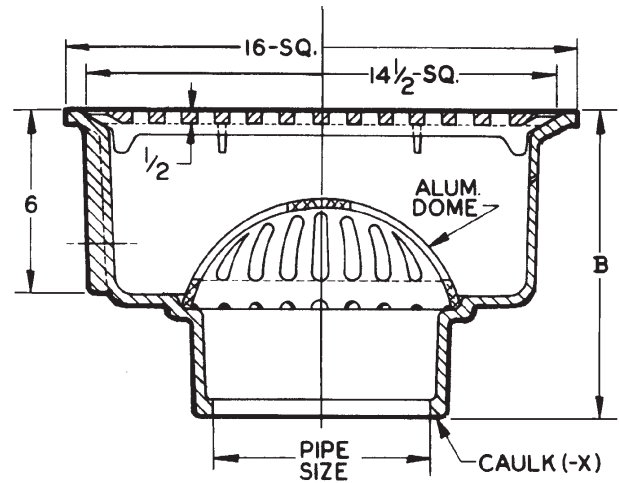
SPECIFICATION

JOSAM 49400-LF Series square cast iron 6" deep SUPER-FLO-SEPTOR® Floor Sink with acid-resisting interior, bottom outlet, aluminum internal dome strainer, cast iron, non-traffic, acid-resisting, anti-tilting SUPER-FLO® Grate.

OPTIONS N/A: -VP, -C

TYPE NO.	PIPE SIZE	B DIM.	LBS.
49403-LF	3	9-1/4	65
49404-LF	4	9-1/2	67
49406-LF	6	9-7/8	70

SLOT WIDTH 9/16"



GRATE FREE AREA 94 SQ. IN.

FOR OUTLET TYPE, SPECIFY -X.

OPTIONS

- ▼ -LF Less Flange
- ▼ -NB Nickel Bronze Traffic Top
- LG Less Grate
- 3 1/2" Grate
- 4 3/4" Grate
- 7 Full Grate with 2-1/2" Center Opening
- VP Secured Grate, Vandal-Proof Screws, NB
- 16 Grate with 4" Round Funnel
- 17 Grate with 6" Round Funnel
- 18 Grate with 9" x 3-1/2" Oval Funnel
- 31 Sediment Bucket (Aluminum)
- 33 Sediment Bucket (A.R. Finish)

- ▽ -35 Stainless Steel Mesh Bucket Liner
- 43 Internal Dome Strainer (A.R. Finish)
- 45 Less Internal Dome Strainer
- 55 1/2" Primer Adapter, 88450 Provided for 3", 4"
- 55 1/2" Primer Tap, 6"
- C Clamp Device, 49400, 49400-NB

OUTLET

- X Inside Caulk Outlet

▽ Specify -31 or -33 Bucket

NOTE: For painted or galvanized inside and outside, see 37960 Series.

49400-NB SERIES

with -NB Nikaloy Traffic Top

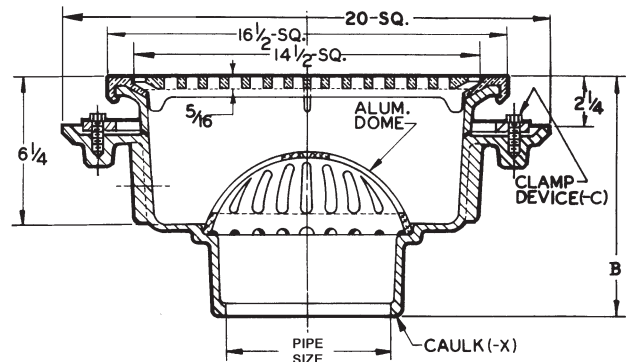
APPLICATION

For use in areas where pedestrian and medium weight wheel loads are anticipated and ultimate sanitation is desired, such as kitchens, hospitals, laundries and food processing plants. The 14-1/2" square grate and medium sump accept heavy flow and the dome strainer intercepts debris which could block the drain line. Double drainage flange serves as an anchor in the sub-floor and redirects secondary moisture to the waste line. It may also be used with a clamp device to assure a bond between the drain and the flashing or waterproof membrane.

SPECIFICATION

JOSAM 49400-NB Series square cast iron 6-1/4" deep SUPER-FLO-SEPTOR® Floor Sink with acid-resisting interior, double drainage flange with weepholes, bottom outlet, aluminum internal dome strainer, Nikaloy sanitary sloped rim and Nikaloy, light-duty, anti-tilting, SUPER-FLO® Grate.

SLOT WIDTH 1/2"



GRATE FREE AREA 93 SQ. IN.

FOR OUTLET TYPE, SPECIFY -X.

TYPE NO.	PIPE SIZE	B DIM.	LBS.
49403-NB	3	9-1/2	110
49404-NB	4	9-3/4	107
49406-NB	6	10-1/8	107

49400-LF-NB SERIES

Less Flange, with -NB Nikaloy Traffic Top

APPLICATION

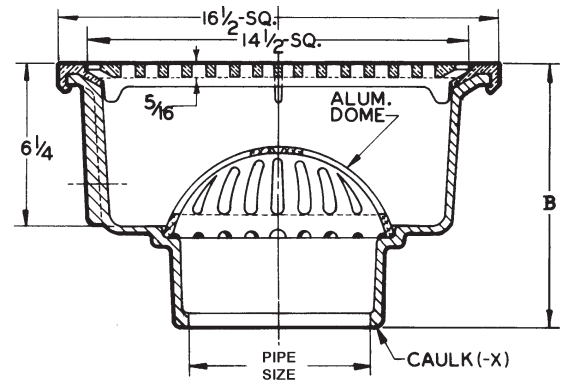
For use in areas where pedestrian and medium weight wheel loads are anticipated and ultimate sanitation is desired, such as kitchens, hospitals, laundries and food processing plants. The 14-1/2" square grate and medium sump accept heavy flow and the dome strainer intercepts debris which could block the drain line.

SPECIFICATION

JOSAM 49400-LF-NB Series square cast iron 6-1/4" deep SUPER-FLO-SEPTOR® Floor Sink with acid-resisting interior, bottom outlet, aluminum internal dome strainer, Nikaloy sanitary sloped rim and Nikaloy, light-duty, anti-tilting, SUPER-FLO® Grate.

OPTION N/A: -C

SLOT WIDTH 1/2"



GRATE FREE AREA 93 SQ. IN.

FOR OUTLET TYPE, SPECIFY -X.

TYPE NO.	PIPE SIZE	B DIM.	LBS.
49403-LF-NB	3	9-1/2	76
49404-LF-NB	4	9-3/4	77
49406-LF-NB	6	10-1/8	80

49420 SERIES

16" SQUARE TOP, 12" DEEP

APPLICATION

For use in non-traffic areas where ultimate sanitation is desired, such as kitchens, hospitals, laundries and food processing plants. The 14-1/2" square grate and deep sump accept very heavy flow and the dome strainer intercepts debris which could block the drain line. Double drainage flange serves as an anchor in the sub-floor and redirects secondary moisture to the waste line. It may also be used with a clamp device to assure a bond between the drain and the flashing or waterproof membrane.

SPECIFICATION

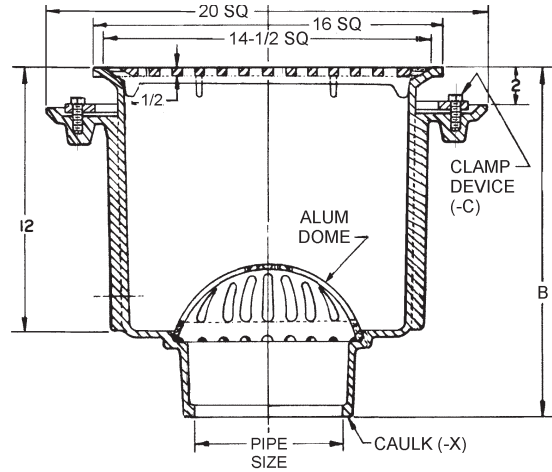
JOSAM 49420 Series square cast iron 12" deep SUPER-FLO-SEPTOR® Floor Sink with acid-resisting interior, double drainage flange with weepholes, bottom outlet, aluminum internal dome strainer and cast iron, non-traffic, acid-resisting, anti-tilting, SUPER-FLO® Grate.

For Options, See Below

OPTION N/A: -VP

TYPE NO.	PIPE SIZE	B DIM.	LBS.
49423	3	15-1/4	117
49424	4	15-1/2	118
49426	6	15-7/8	121

SLOT WIDTH 9/16"



GRATE FREE AREA 94 SQ. IN.

FOR OUTLET TYPE, SPECIFY -X.

49420-LF SERIES

Less Flange

APPLICATION

For use in non-traffic areas where ultimate sanitation is desired, such as kitchens, hospitals, laundries and food processing plants. The 14-1/2" square grate and deep sump accept very heavy flow and the dome strainer intercepts debris which could block the drain line.

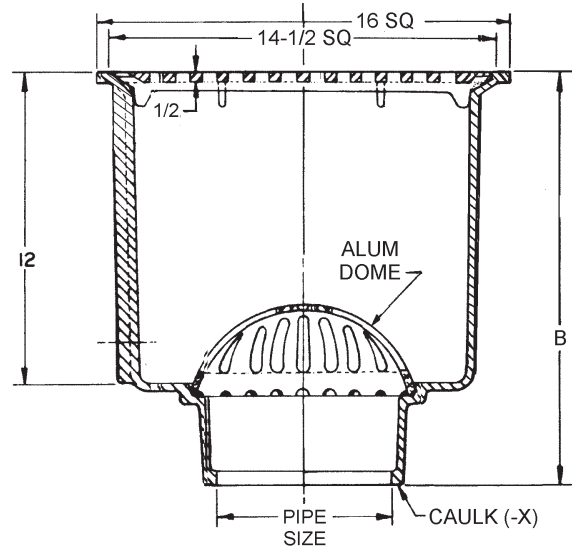
SPECIFICATION

JOSAM 49420-LF Series square cast iron 12" deep SUPER-FLO-SEPTOR® Floor Sink with acid-resisting interior, bottom outlet, aluminum internal dome strainer and cast iron, non-traffic, acid-resisting, anti-tilting, SUPER-FLO® Grate.

OPTIONS N/A: -C, -VP

TYPE NO.	PIPE SIZE	B DIM.	LBS.
49423-LF	3	15-1/4	98
49424-LF	4	15-1/2	98
49426-LF	6	15-7/8	98

SLOT WIDTH 9/16"



GRATE FREE AREA 94 SQ. IN.

FOR OUTLET TYPE, SPECIFY -X.

OPTIONS

- ▼ -LF Less Flange
- ▼ -NB Nickel Bronze Traffic Top
- LG Less Grate
- 3 1/2 Grate
- 4 3/4 Grate
- 7 Full Grate with 2-1/2" Center Opening
- VP Secured Grate, Vandal-Proof Screws, NB
- 16 Grate with 4" Round Funnel
- 17 Grate with 6" Round Funnel
- 18 Grate with 9" x 3-1/2" Oval Funnel
- 31 Sediment Bucket (Aluminum)
- 33 Sediment Bucket (A.R. Finish)

- ▽ -35 Stainless Steel Mesh Bucket Liner
- 43 Internal Dome Strainer (A.R. Finish)
- 45 Less Internal Dome Strainer
- 51 Galvanized Cast Iron Inside and Outside
- 52 Painted Inside and Outside
- 55 1/2" Primer Adapter, 88450 Provided for 3", 4"
- 55 1/2" Primer Tap, 6"
- C Clamp Device, 49420, 49420-NB

OUTLET

- X Inside Caulk Outlet

▽ Specify -31 or -33 Bucket

49420-NB SERIES

with -NB Nikaloy Traffic Top

APPLICATION

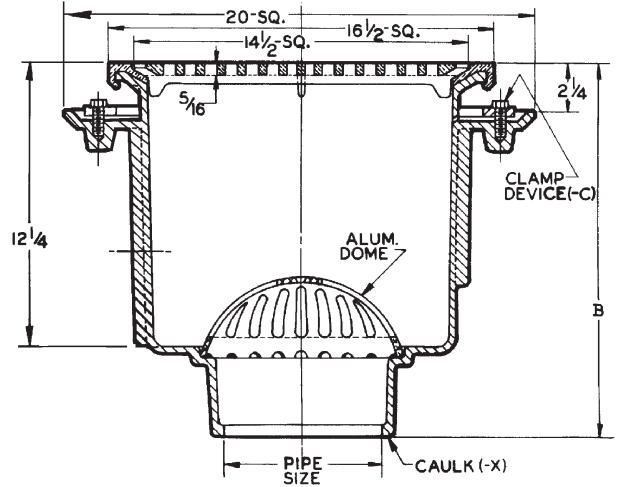
For use in areas where pedestrian and medium weight wheel loads are anticipated and ultimate sanitation is desired, such as kitchens, hospitals, laundries and food processing plants. The 14-1/2" square grate and deep sump accept very heavy flow and the dome strainer intercepts debris which could block the drain line. Double drainage flange serves as an anchor in the sub-floor and redirects secondary moisture to the waste line. It may also be used with a clamp device to assure a bond between the drain and the flashing or waterproof membrane.

SPECIFICATION

JOSAM 49420-NB Series square cast iron 12-1/4" deep SUPER-FLO-SEPTOR® Floor Sink with acid-resisting interior, double drainage flange with weepholes, bottom outlet, aluminum internal dome strainer, Nikaloy sanitary sloped rim and Nikaloy, light-duty, anti-tilting, SUPER-FLO® Grate.

TYPE NO.	PIPE SIZE	B DIM.	LBS.
49423-NB	3	15-1/2	128
49424-NB	4	15-3/4	129
49426-NB	6	16-1/4	132

SLOT WIDTH 1/2"



GRATE FREE AREA 93 SQ. IN.

FOR OUTLET TYPE, SPECIFY -X.

49420-LF-NB SERIES

Less Flange, with -NB Nikaloy Traffic Top

APPLICATION

For use in areas where pedestrian and medium weight wheel loads are anticipated and ultimate sanitation is desired, such as kitchens, hospitals, laundries and food processing plants. The 14-1/2" square grate and deep sump accept very heavy flow and the dome strainer intercepts debris which could block the drain line.

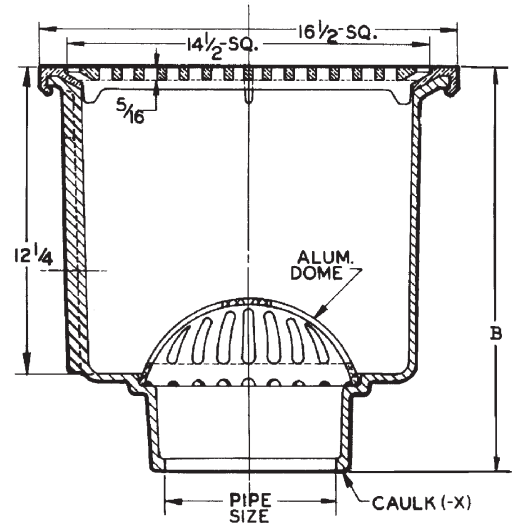
SPECIFICATION

JOSAM 49420-LF-NB Series square cast iron 12-1/4" deep SUPER-FLO-SEPTOR® Floor Sink with acid-resisting interior, bottom outlet, aluminum internal dome strainer, Nikaloy sanitary sloped rim and Nikaloy, light-duty, anti-tilting, SUPER-FLO® Grate.

OPTION N/A: -C

TYPE NO.	PIPE SIZE	B DIM.	LBS.
49423-LF-NB	3	15-1/2	109
49424-LF-NB	4	15-3/4	108
49426-LF-NB	6	16-1/4	108

SLOT WIDTH 1/2"



GRATE FREE AREA 93 SQ. IN.

FOR OUTLET TYPE, SPECIFY -X.

49500 SERIES

SUPER-FLO® 8" ROUND TOP, 3" DEEP

APPLICATION

For use in non-traffic areas where ultimate sanitation is desired, such as kitchens, hospitals and food processing plants. The 7-1/4" diameter grate and shallow sump accept light flow and the dome strainer intercepts debris which could block the drain line. Double drainage flange serves as an anchor in the sub-floor and redirects secondary moisture to the waste line. It may also be used with a clamp device to assure a bond between the drain and the flashing or waterproof membrane.

SPECIFICATION

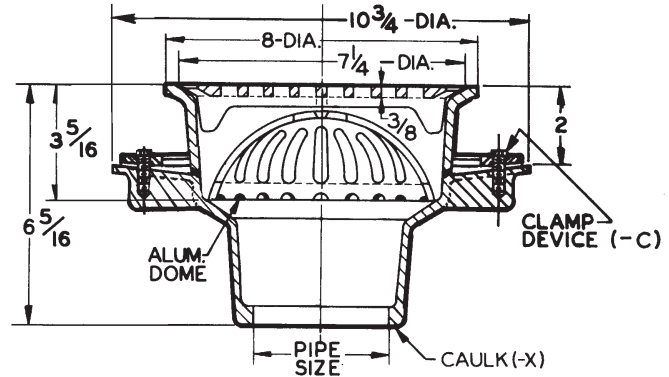
JOSAM 49500 Series round cast iron 3-5/16" deep SUPER-FLO-SEPTOR® Floor Sink with acid-resisting interior, double drainage flange with weepholes, bottom outlet, aluminum internal dome strainer and cast iron, non-traffic, acid-resisting, anti-tilting, SUPER-FLO® Grate.

For Options, See Below

OPTIONS N/A: -VP, -8

TYPE NO.	PIPE SIZE	LBS.
49502	2	15
49503	3	16
49504	4	17

SLOT WIDTH 7/16"



GRATE FREE AREA 15.5 SQ. IN.

FOR OUTLET TYPE, SPECIFY -X.

49500-LF SERIES

Less Flange

APPLICATION

For use in non-traffic areas where ultimate sanitation is desired, such as kitchens, hospitals and food processing plants. The 7-1/4" diameter grate and shallow sump accept light flow and the dome strainer intercepts debris which could block the drain line.

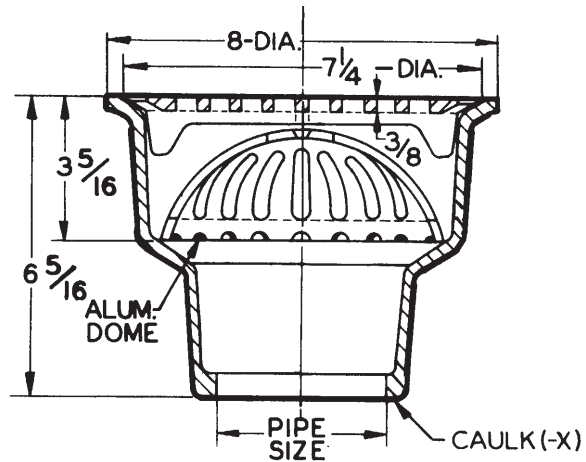
SPECIFICATION

JOSAM 49500-LF Series round cast iron 3-5/16" deep SUPER-FLO-SEPTOR® Floor Sink with acid-resisting interior, bottom outlet, aluminum internal dome strainer and cast iron, non-traffic, acid-resisting, anti-tilting, SUPER-FLO® Grate.

OPTIONS N/A: -VP, -C, -8

TYPE NO.	PIPE SIZE	LBS.
49502-LF	2	14
49503-LF	3	15
49504-LF	4	15

SLOT WIDTH 7/16"



GRATE FREE AREA 15.5 SQ. IN.

FOR OUTLET TYPE, SPECIFY -X.

OPTIONS

- | | | | |
|-------|--|---------------|---|
| ▼ -LF | Less Flange | ▽ -35 | Stainless Steel Mesh Bucket Liner |
| ▼ -NB | Nickel Bronze Traffic Top | -43 | Internal Dome Strainer (A.R. Finish) |
| -LG | Less Grate | -45 | Less Internal Dome Strainer |
| -3 | 1/2 Grate | -51 | Galvanized Cast Iron Inside and Outside |
| -4 | 3/4 Grate | -52 | Painted Inside and Outside |
| -7 | Full Grate with 2-1/2" Center Opening | -55 | 1/2" Primer Adaptor, 88450 Provided |
| -8 | Depressed Grate (Aluminum), NB | -C | Clamp Device, 49500, 49500-NB |
| -VP | Secured Grate, Vandal-Proof Screws, NB | | |
| -16 | Grate with 4" Round Funnel | | |
| -17 | Grate with 6" Round Funnel | | |
| -18 | Grate with 9" x 3-1/2" Oval Funnel | | |
| -31 | Sediment Bucket (Aluminum) | | |
| -33 | Sediment Bucket (A.R. Finish) | | |
| | | OUTLET | |
| | | -X | Inside Caulk Outlet |
| | | | ▽ Specify -31 or -33 Bucket |

49500-NB SERIES

with -NB Nikaloy Traffic Top

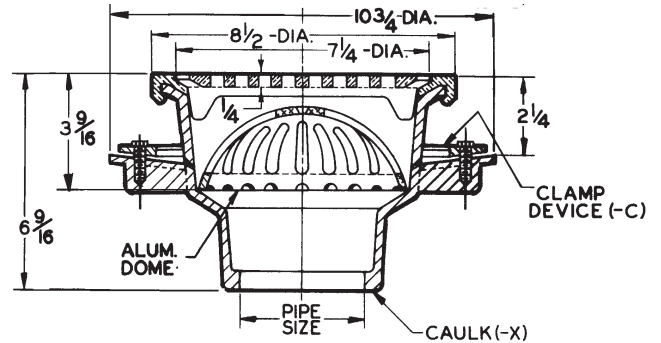
APPLICATION

For use in areas where pedestrian and medium weight wheel loads are anticipated and ultimate sanitation is desired, such as kitchens, hospitals and food processing plants. The 7-1/4" diameter grate and shallow sump accept light flow and the dome strainer intercepts debris which could block the drain line. Double drainage flange serves as an anchor in the sub-floor and redirects secondary moisture to the waste line. It may also be used with a clamp device to assure a bond between the drain and the flashing or waterproof membrane.

SPECIFICATION

JOSAM 49500-NB Series round cast iron 3-9/16" deep SUPER-FLO-SEPTOR® Floor Sink with acid-resisting interior, double drainage flange with weepholes, bottom outlet, aluminum internal dome strainer, Nikaloy sanitary sloped rim and Nikaloy, light-duty, anti-tilting, SUPER-FLO® Grate.

SLOT WIDTH 3/8"



TYPE NO.	PIPE SIZE	LBS.
49502-NB	2	19
49503-NB	3	19
49504-NB	4	20

GRATE FREE AREA 17 SQ. IN.

FOR OUTLET TYPE, SPECIFY -X.

49500-LF-NB SERIES

Less Flange, with -NB Nikaloy Traffic Top

APPLICATION

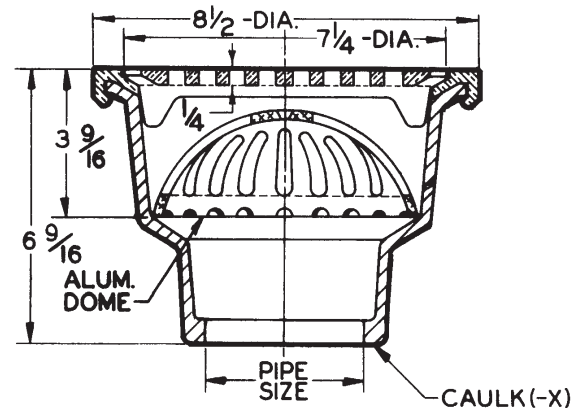
For use in areas where pedestrian and medium weight wheel loads are anticipated and ultimate sanitation is desired, such as kitchens, hospitals and food processing plants. The 7-1/4" diameter grate and shallow sump accept light flow and the dome strainer intercepts debris which could block the drain line.

SPECIFICATION

JOSAM 49500-LF-NB Series round cast iron 3-9/16" deep SUPER-FLO-SEPTOR® Floor Sink with acid-resisting interior, bottom outlet, aluminum internal dome strainer, Nikaloy sanitary sloped rim and Nikaloy, light-duty, anti-tilting, SUPER-FLO® Grate.

OPTION N/A: -C

SLOT WIDTH 3/8"



TYPE NO.	PIPE SIZE	LBS.
49502-LF-NB	2	17
49503-LF-NB	3	18
49504-LF-NB	4	18

GRATE FREE AREA 17 SQ. IN.

FOR OUTLET TYPE, SPECIFY -X.

49520A SERIES

SUPER-FLO® 8" ROUND TOP, 6" DEEP

APPLICATION

For use in non-traffic areas where ultimate sanitation is desired, such as kitchens, hospitals and food processing plants. The 7-1/4" diameter grate and medium sump accept light flow and the dome strainer intercepts debris which could block the drain line. Double drainage flange serves as an anchor in the sub-floor and redirects secondary moisture to the waste line. It may also be used with a clamp device to assure a bond between the drain and the flashing or waterproof membrane.

SPECIFICATION

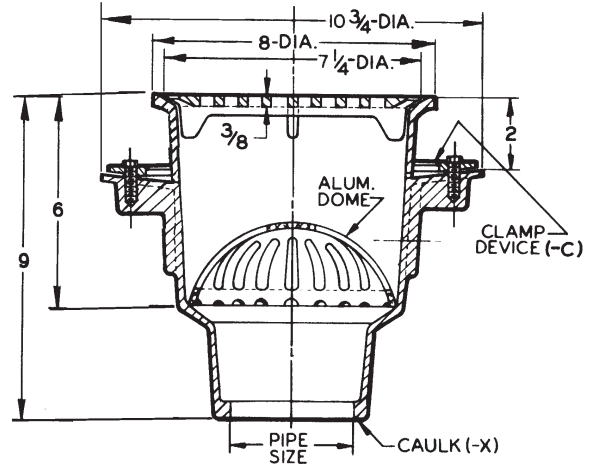
JOSAM 49520A Series round cast iron 6" deep SUPER-FLO-SEPTOR® Floor Sink with acid-resisting interior, double drainage flange with weepholes, bottom outlet, aluminum internal dome strainer, cast iron, non-traffic, acid-resisting, anti-tilting, SUPER-FLO® Grate.

For Options, See Below

OPTIONS N/A: -VP, -8

TYPE NO.	PIPE SIZE	LBS.
49522A	2	19
49523A	3	19
49524A	4	21

SLOT WIDTH 7/16"



GRATE FREE AREA 15.5 SQ. IN.

FOR OUTLET TYPE, SPECIFY -X.

49520A-LF SERIES

Less Flange

APPLICATION

For use in non-traffic areas where ultimate sanitation is desired, such as kitchens, hospitals and food processing plants. The 7-1/4" diameter grate and medium sump accept light flow and the dome strainer intercepts debris which could block the drain line.

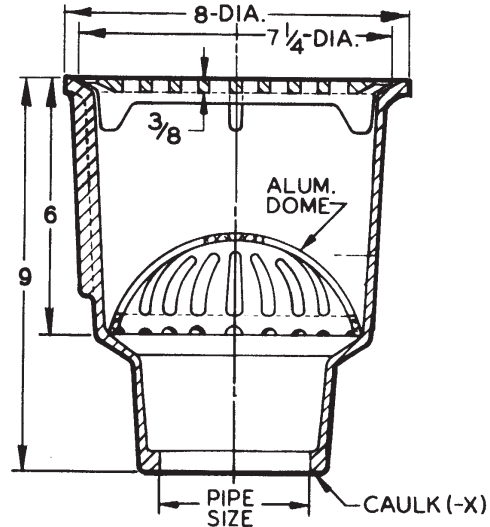
SPECIFICATION

JOSAM 49520A-LF Series round cast iron 6" deep SUPER-FLO-SEPTOR® Floor Sink with acid-resisting interior, bottom outlet, aluminum internal dome strainer, cast iron, non-traffic, acid-resisting, anti-tilting, SUPER-FLO® Grate.

OPTIONS N/A: -VP, -C, -8

TYPE NO.	PIPE SIZE	LBS.
49522A-LF	2	17
49523A-LF	3	18
49524A-LF	4	18

SLOT WIDTH 7/16"



GRATE FREE AREA 15.5 SQ. IN.

FOR OUTLET TYPE, SPECIFY -X.

OPTIONS

- ▼ -LF Less Flange
- ▼ -NB Nickel Bronze Traffic Top
- LG Less Grate
- 3 1/2 Grate
- 4 3/4 Grate
- 7 Full Grate with 2-1/2" Center Opening
- 8 Depressed Grate, (Aluminum), NB
- VP Secured Grate, Vandal-Proof Screws, NB
- 16 Grate with 4" Round Funnel
- 17 Grate with 6" Round Funnel
- 18 Grate with 9" x 3-1/2" Oval Funnel
- 31 Sediment Bucket (Aluminum)
- 33 Sediment Bucket (A.R. Finish)

- ▽ -35 Stainless Steel Mesh Bucket Liner
- 43 Internal Dome Strainer (A.R. Finish)
- 45 Less Internal Dome Strainer
- 51 Galvanized Cast Iron Inside and Outside
- 52 Painted Inside and Outside
- 55 1/2" Primer Adapter, 88450 Provided
- C Clamp Device, 49520A, 49520A-NB

OUTLET

- X Inside Caulk Outlet
- ▽ Specify -31 or -33 Bucket

49520A-NB SERIES

with -NB Nikaloy Traffic Top

APPLICATION

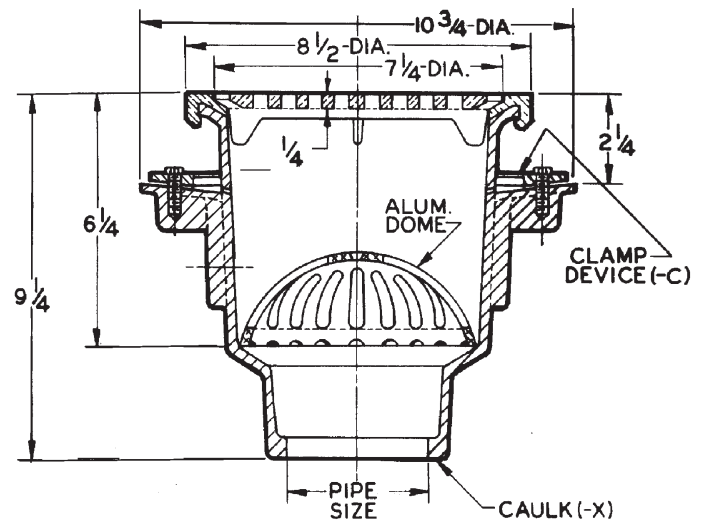
For use in areas where pedestrian and medium weight wheel loads are anticipated and ultimate sanitation is desired, such as kitchens, hospitals and food processing plants. The 7-1/4" diameter grate and medium sump accept light flow and the dome strainer intercepts debris which could block the drain line. Double drainage flange serves as an anchor in the sub-floor and redirects secondary moisture to the waste line. It may also be used with a clamp device to assure a bond between the drain and the flashing or waterproof membrane.

SPECIFICATION

JOSAM 49520A-NB Series round cast iron 6-1/4" deep SUPER-FLO-SEPTOR® Floor Sink with acid-resisting interior, double drainage flange with weepholes, bottom outlet, aluminum internal dome strainer, Nikaloy sanitary sloped rim and Nikaloy, light-duty, anti-tilting, SUPER-FLO® Grate.

TYPE NO.	PIPE SIZE	LBS.
49522A-NB	2	22
49523A-NB	3	22
49524A-NB	4	24

SLOT WIDTH 3/8"



GRATE FREE AREA 17 SQ. IN.

FOR OUTLET TYPE, SPECIFY -X.

49520A-LF-NB SERIES

Less Flange, with -NB Nikaloy Traffic Top

APPLICATION

For use in areas where pedestrian and medium weight wheel loads are anticipated and ultimate sanitation is desired, such as kitchens, hospitals and food processing plants. The 7-1/4" diameter grate and medium sump accept light flow and the dome strainer intercepts debris which could block the drain line.

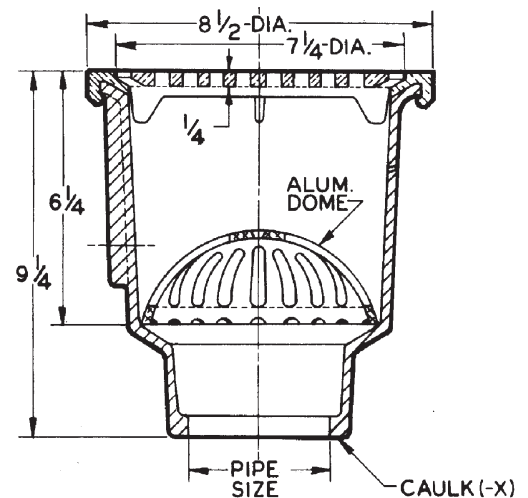
SPECIFICATION

JOSAM 49520A-LF-NB Series round cast iron 6-1/4" deep SUPER-FLO-SEPTOR® Floor Sink with acid-resisting interior, bottom outlet, aluminum internal dome strainer, Nikaloy sanitary sloped rim and Nikaloy, light-duty, anti-tilting, SUPER-FLO® Grate.

OPTION N/A: -C

TYPE NO.	PIPE SIZE	LBS.
49522A-LF-NB	2	20
49523A-LF-NB	3	21
49524A-LF-NB	4	22

SLOT WIDTH 3/8"



GRATE FREE AREA 17 SQ. IN.

FOR OUTLET TYPE, SPECIFY -X.

49580A SERIES

SUPER-FLO® 12" ROUND TOP, 8" DEEP

APPLICATION

For use in areas where pedestrian and medium weight wheel loads are anticipated and ultimate sanitation is desired, such as kitchens, hospitals and food processing plants. The 10-1/2" diameter grate and deep sump accept heavy flow and the dome strainer intercepts debris which could block the drain line. Double drainage flange serves as an anchor in the sub-floor and redirects secondary moisture to the waste line. It may also be used with a clamp device to assure a bond between the drain and the flashing or waterproof membrane.

SPECIFICATION

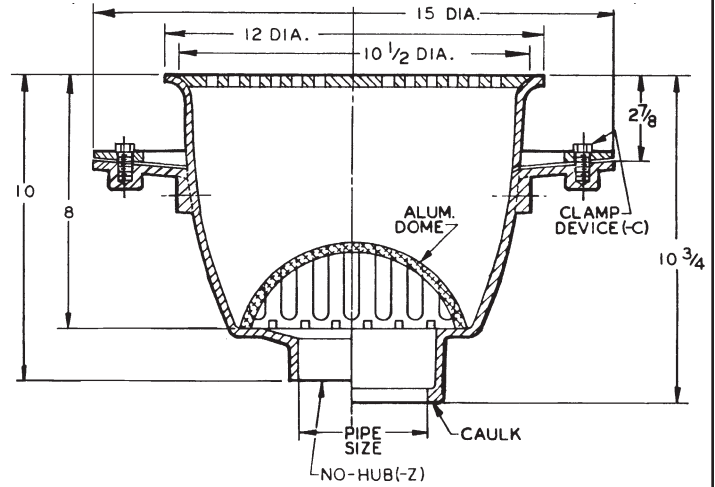
JOSAM 49580A Series round cast iron 8" deep SUPER-FLO-SEPTOR® Floor Sink with acid-resisting interior, double drainage flange with weepholes, bottom outlet, aluminum internal dome strainer, cast iron, non-traffic, acid-resisting, anti-tilting, SUPER-FLO® Grate.

For Options, See Below

OPTIONS N/A: -VP, -8

TYPE NO.	PIPE SIZE	LBS.
49582A	2	45
49583A	3	46
49584A	4	47

SLOT WIDTH 3/4"



GRATE FREE AREA 19.7 SQ. IN.

FOR OUTLET TYPE, SPECIFY -X or -Z.

49580A-LF SERIES

Less Flange

APPLICATION

For use in areas where pedestrian and medium weight wheel loads are anticipated and ultimate sanitation is desired, such as kitchens, hospitals and food processing plants. The 10-1/2" diameter grate and deep sump accept heavy flow and the dome strainer intercepts debris which could block the drain line.

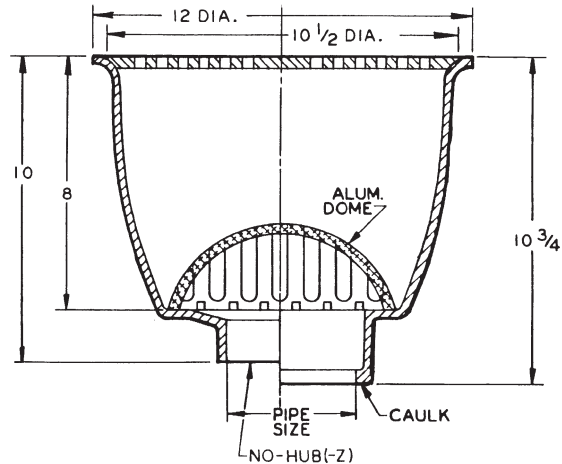
SPECIFICATION

JOSAM 49580A-LF Series round cast iron 8" deep SUPER-FLO-SEPTOR® Floor Sink with acid-resisting interior, bottom outlet, aluminum internal dome strainer, cast iron, non-traffic, acid-resisting, anti-tilting, SUPER-FLO® Grate.

OPTIONS N/A: -VP, -C, -8

TYPE NO.	PIPE SIZE	LBS.
49582A-LF	2	37
49583A-LF	3	38
49584A-LF	4	39

SLOT WIDTH 3/4"



GRATE FREE AREA 19.7 SQ. IN.

FOR OUTLET TYPE, SPECIFY -X or -Z.

OPTIONS

- ▼ -LF Less Flange
- ▼ -NB Nickel Bronze Traffic To
- LG Less Grate
- 3 1/2 Grate
- 4 3/4 Grate
- 7 Full Grate with 2-1/2" Center Opening
- 8 Depressed Grate, (Aluminum), NB
- VP Secured Grate, Vandal-Proof Screws, NB
- 16 Grate with 4" Round Funnel
- 17 Grate with 6" Round Funnel
- 18 Grate with 9" x 3-1/2" Oval Funnel
- 31 Sediment Bucket (Aluminum)
- 33 Sediment Bucket (A.R. Finish)

- ▽ -35 Stainless Steel Mesh Bucket Liner
- 43 Internal Dome Strainer (A.R. Finish)
- 45 Less Internal Dome Strainer
- 51 Galvanized Cast Iron Inside and Outside
- 52 Painted Inside and Outside
- 55 1/2" Primer Adapter, 88450 Provided
- C Clamp Device, 49580A, 49580A-NB

OUTLETS

- X Inside Caulk Outlet
- Z No-Hub Outlet

▽ Specify -31 or -33 Bucket

49580A-NB SERIES

with -NB Nikaloy Traffic Top

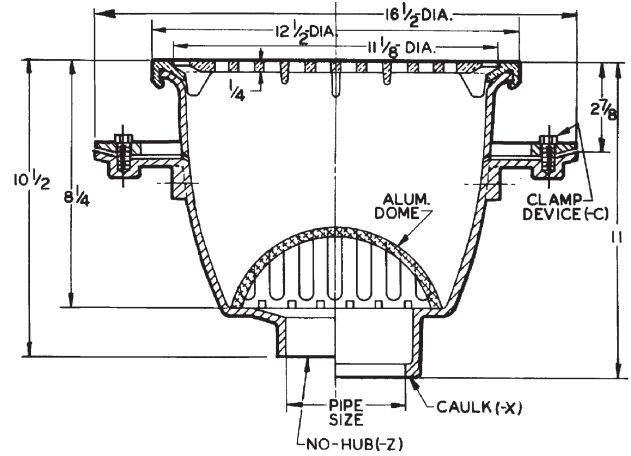
APPLICATION

For use in areas where pedestrian and medium weight wheel loads are anticipated and ultimate sanitation is desired, such as kitchens, hospitals and food processing plants. The 11-1/8" diameter grate and deep sump accept heavy flow and the dome strainer intercepts debris which could block the drain line. Double drainage flange serves as an anchor in the sub-floor and redirects secondary moisture to the waste line. It may also be used with a clamp device to assure a bond between the drain and the flashing or waterproof membrane.

SPECIFICATION

JOSAM 49580A-NB Series round cast iron 8-1/4" deep SUPER-FLO-SEPTOR® Floor Sink with acid-resisting interior, double drainage flange with weepholes, bottom outlet, aluminum internal dome strainer, Nikaloy sanitary sloped rim and Nikaloy, light-duty, anti-tilting, SUPER-FLO® Grate.

SLOT WIDTH 1/2"



GRATE FREE AREA 40 SQ. IN.

FOR OUTLET TYPE, SPECIFY -X or -Z.

TYPE NO.	PIPE SIZE	LBS.
49582A-NB	2	50
49583A-NB	3	51
49584A-NB	4	52

49580A-LF-NB SERIES

Less Flange, with -NB Nikaloy Traffic Top

APPLICATION

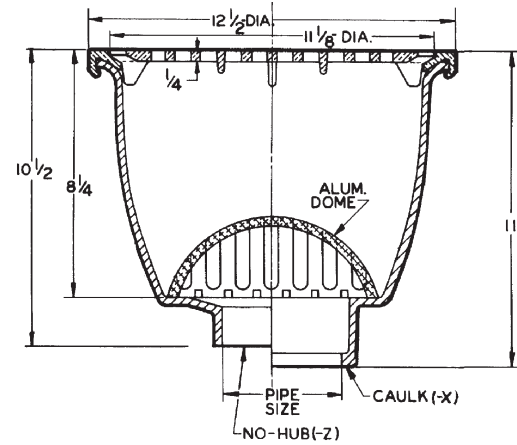
For use in areas where pedestrian and medium weight wheel loads are anticipated and ultimate sanitation is desired, such as kitchens, hospitals and food processing plants. The 11-1/8" diameter grate and deep sump accept heavy flow and the dome strainer intercepts debris which could block the drain line.

SPECIFICATION

JOSAM 49580A-LF-NB Series round cast iron 8-1/4" deep SUPER-FLO-SEPTOR® Floor Sink with acid-resisting interior, bottom outlet, aluminum internal dome strainer, Nikaloy sanitary sloped rim and Nikaloy, light-duty, anti-tilting, SUPER-FLO® Grate.

OPTION N/A: -C

SLOT WIDTH 1/2"



GRATE FREE AREA 40 SQ. IN.

FOR OUTLET TYPE, SPECIFY -X or -Z.

TYPE NO.	PIPE SIZE	LBS.
49582A-LF-NB	2	43
49583A-LF-NB	3	43
49584A-LF-NB	4	44

49700 SERIES

4" X 8" RECTANGULAR TOP, 4' DEEP

APPLICATION

For use in non-traffic areas where space is limited such as under counters or against walls and ultimate sanitation is desired, such as kitchens, hospitals and food prep stations. The 3-3/8" x 7-3/8" rectangular grate and shallow sump accept light flow and the secondary strainer intercepts debris which could block the drain line. Double drainage flange serves as an anchor in the sub-floor and redirects secondary moisture to the waste line. It may also be used with a clamp device to assure a bond between the drain and the flashing or waterproof membrane.

SPECIFICATION

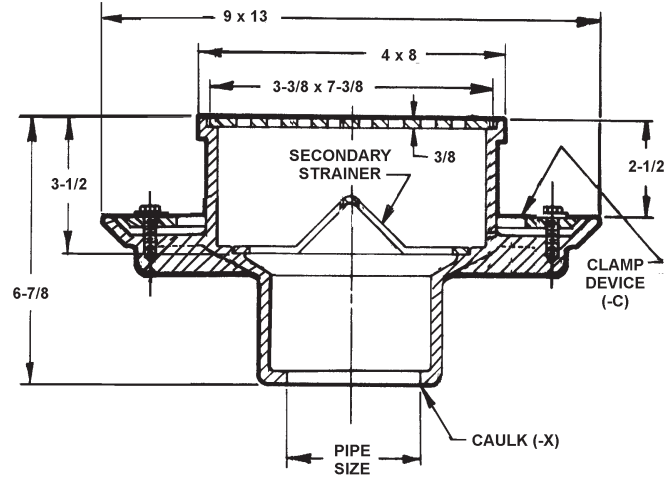
JOSAM 49700 Series rectangular cast iron 3-1/2" deep SUPER-FLO-SEPTOR® Floor Sink with acid-resisting interior, double drainage flange with weepholes, bottom outlet, aluminum internal dome strainer and cast iron, non-traffic, acid-resisting grate.

For Options, See Below

OPTIONS N/A: -VP, -8

TYPE NO.	PIPE SIZE	LBS.
49702	2	24
49703	3	24

SLOT WIDTH 1/4"



GRATE FREE AREA 7 SQ. IN.

FOR OUTLET TYPE, SPECIFY -X.

49700-LF SERIES

Less Flange

APPLICATION

For use in non-traffic areas where space is limited such as under counters or against walls and ultimate sanitation is desired, such as kitchens, hospitals and food prep stations. The 3-3/8" x 7-3/8" rectangular grate and shallow sump accept light flow and the secondary strainer intercepts debris which could block the drain line.

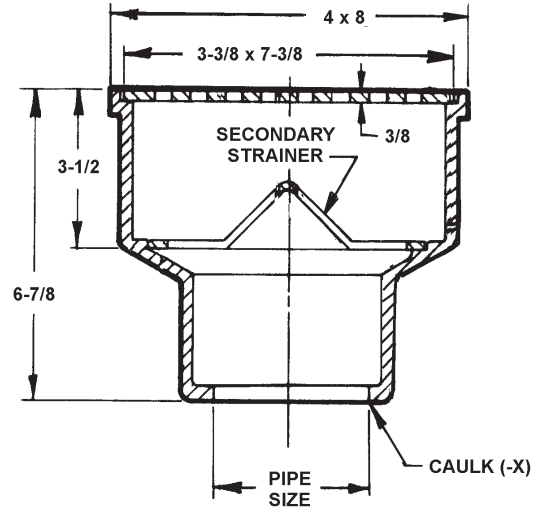
SPECIFICATION

JOSAM 49700-LF Series rectangular cast iron 3-1/2" deep SUPER-FLO-SEPTOR® Floor Sink with acid-resisting interior, bottom outlet, aluminum internal dome strainer and cast iron, non-traffic, acid-resisting grate.

OPTIONS N/A: -VP, -C, -8

TYPE NO.	PIPE SIZE	LBS.
49702-LF	2	13
49703-LF	3	15

SLOT WIDTH 1/4"



GRATE FREE AREA 7 SQ. IN.

FOR OUTLET TYPE, SPECIFY -X.

OPTIONS

- ▼ -LF Less Flange
 - ▼ -NB Nickel Bronze Traffic Top
 - LG Less Grate
 - 3 1/2 Grate
 - 4 3/4 Grate
 - 7 Full Grate with 2-1/2" Center Opening
 - 8 Depressed Grate, (Aluminum), NB
 - VP Secured Grate, Vandal-Proof Screws, NB
 - 16 Grate with 4" Round Funnel
 - 30 Stainless Steel Sediment Bucket
 - 43 Internal Dome Strainer (A.R. Finish)
 - 45 Less Internal Dome Strainer
 - 51 Galvanized Cast Iron Inside and Outside
 - 52 Painted Inside and Outside
 - 55 1/2" Primer Adapter, 88450 Provided
 - C Clamp Device, 49700, 49700-NB
- OUTLETS**
- X Inside Caulk Outlet

49700-NB SERIES

with -NB Nikaloy Traffic Top

APPLICATION

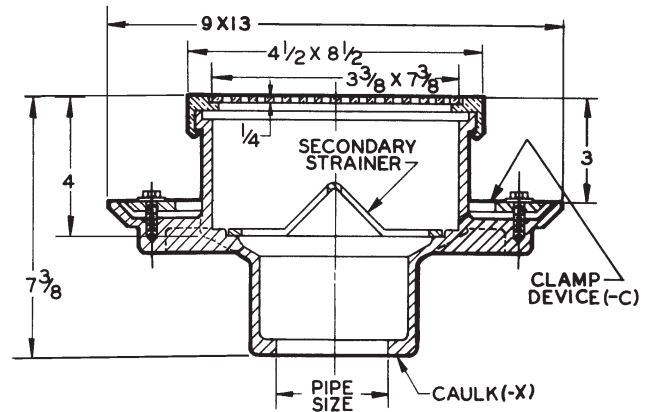
For use in areas where pedestrian and medium weight wheel loads are anticipated or space is limited such as under counters or against walls and ultimate sanitation is desired, such as kitchens, hospitals and food prep stations. The 3-3/8" x 7-3/8" rectangular grate and shallow sump accept light flow and the secondary strainer intercepts debris which could block the drain line. Double drainage flange serves as an anchor in the sub-floor and redirects secondary moisture to the waste line. It may also be used with a clamp device to assure a bond between the drain and the flashing or waterproof membrane.

SPECIFICATION

JOSAM 49700-NB Series rectangular cast iron 4" deep SUPER-FLO-SEPTOR® Floor Sink with acid-resisting interior, double drainage flange with weepholes, bottom outlet, aluminum internal dome strainer, Nikaloy rim and light-duty, anti-tilting, Nikaloy grate.

TYPE NO.	PIPE SIZE	LBS.
49702-NB	2	26
49703-NB	3	26

SLOT WIDTH 1/4"



GRATE FREE AREA 10 SQ. IN.

FOR OUTLET TYPE, SPECIFY -X.

49700-LF-NB SERIES

Less Flange, with -NB Nikaloy Traffic Top

APPLICATION

For use in areas where pedestrian and medium weight wheel loads are anticipated or space is limited such as under counters or against walls and ultimate sanitation is desired, such as kitchens, hospitals and food prep stations. The 3-3/8" x 7-3/8" rectangular grate and shallow sump accept light flow and the secondary strainer intercepts debris which could block the drain line.

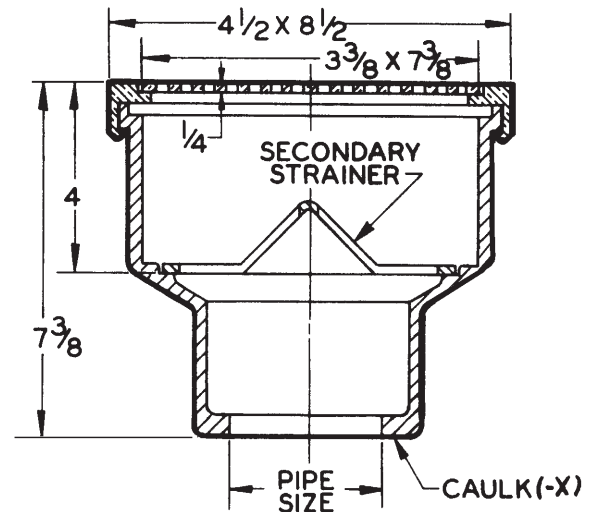
SPECIFICATION

JOSAM 49700-LF-NB Series rectangular cast iron 4" deep SUPER-FLO-SEPTOR® Floor Sink with acid-resisting interior, bottom outlet, aluminum internal dome strainer, Nikaloy rim and light-duty, anti-tilting, Nikaloy grate.

OPTION N/A: -C

TYPE NO.	PIPE SIZE	LBS.
49702-LF-NB	2	15
49703-LF-NB	3	18

SLOT WIDTH 1/4"



GRATE FREE AREA 10 SQ. IN.

FOR OUTLET TYPE, SPECIFY -X.

49720 SERIES

6" X 12" RECTANGULAR TOP, 7" DEEP

APPLICATION

For use in non-traffic areas where space is limited such as under counters or against walls and ultimate sanitation is desired, such as kitchens, hospitals and food prep stations. The 5-5/8" x 11-3/8" rectangular grate and medium sump accept a moderate flow and the secondary strainer intercepts debris which could block the drain line. Double drainage flange serves as an anchor in the sub-floor and redirects secondary moisture to the waste line. It may also be used with a clamp device to assure a bond between the drain and the flashing or waterproof membrane.

SPECIFICATION

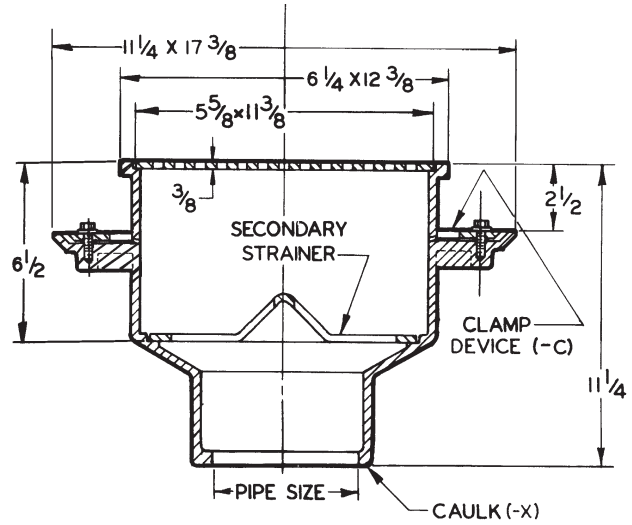
JOSAM 49720 Series rectangular cast iron 6-1/2" deep SUPER-FLO-SEPTOR® Floor Sink with acid-resisting interior, double drainage flange with weepholes, bottom outlet, aluminum internal dome strainer and cast iron, non-traffic, acid-resisting grate.

For Options, See Below

OPTIONS N/A: -VP, -8

TYPE NO.	PIPE SIZE	LBS.
49723	3	49
49724	4	49
49726	6	50

SLOT WIDTH 3/8"



GRATE FREE AREA 22 SQ. IN.

FOR OUTLET TYPE, SPECIFY -X.

49720-LF SERIES

Less Flange

APPLICATION

For use in non-traffic areas where space is limited such as under counters or against walls and ultimate sanitation is desired, such as kitchens, hospitals and food prep stations. The 5-5/8" x 11-3/8" rectangular grate and medium sump accept a moderate flow and the secondary strainer intercepts debris which could block the drain line.

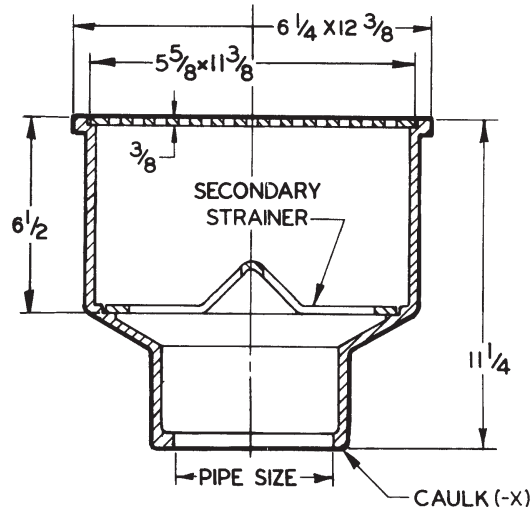
SPECIFICATION

JOSAM 49720-LF Series rectangular cast iron 6-1/2" deep SUPER-FLO-SEPTOR® Floor Sink with acid-resisting interior, bottom outlet, aluminum internal dome strainer and cast iron, non-traffic, acid-resisting grate.

OPTIONS N/A: -VP, -C, -8

TYPE NO.	PIPE SIZE	LBS.
49723-LF	3	36
49724-LF	4	35
49726-LF	6	40

SLOT WIDTH 3/8"



GRATE FREE AREA 22 SQ. IN.

FOR OUTLET TYPE, SPECIFY -X.

OPTIONS

▼ -LF	Less Flange	-51	Galvanized Cast Iron Inside and Outside
▼ -NB	Nickel Bronze Traffic Top	-52	Painted Inside and Outside
-LG	Less Grate	-55	1/2" Primer Adapter, 88450 Provided for 3", 4"
-3	1/2 Grate		1/2" Primer Tap, 6"
-4	3/4 Grate	-C	Clamp Device, 49720, 49720-NB
-7	Full Grate with 2-1/2" Center Opening		
-8	Depressed Grate, (Aluminum), NB		
-VP	Secured Grate, Vandal-Proof Screws, NB		
-16	Grate with 4" Round Funnel		
-18	Grate with 9" x 3-1/2" Oval Funnel		
-30	Stainless Steel Sediment Bucket		
-43	Internal Dome Strainer (A.R. Finish)		
-45	Less Internal Dome Strainer		
		OUTLET	
		-X	Inside Caulk Outlet

49720-NB SERIES

with -NB Nikaloy Traffic Top

APPLICATION

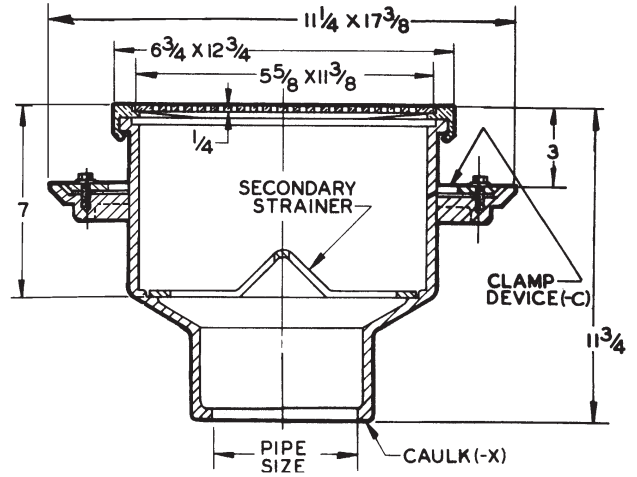
For use in areas where pedestrian and medium weight wheel loads are anticipated or space is limited such as under counters or against walls and ultimate sanitation is desired, such as kitchens, hospitals and food prep stations. The 5-5/8" x 11-3/8" rectangular grate and medium sump accept a moderate flow and the secondary strainer intercepts debris which could block the drain line. Double drainage flange serves as an anchor in the sub-floor and redirects secondary moisture to the waste line. It may also be used with a clamp device to assure a bond between the drain and the flashing or waterproof membrane.

SPECIFICATION

JOSAM 49720-NB Series rectangular cast iron 7" deep SUPER-FLO-SEPTOR® Floor Sink with acid-resisting interior, double drainage flange with weepholes, bottom outlet, aluminum internal dome strainer, Nikaloy rim and light-duty, anti-tilting, Nikaloy grate.

TYPE NO.	PIPE SIZE	LBS.
49723-NB	3	52
49724-NB	4	53
49726-NB	6	54

SLOT WIDTH 1/4"



GRATE FREE AREA 25 SQ. IN.

FOR OUTLET TYPE, SPECIFY -X.

49720-LF-NB SERIES

Less Flange, with -NB Nikaloy Traffic Top

APPLICATION

For use in areas where pedestrian and medium weight wheel loads are anticipated or space is limited such as under counters or against walls and ultimate sanitation is desired, such as kitchens, hospitals and food prep stations. The 5-5/8" x 11-3/8" rectangular grate and medium sump accept a moderate flow and the secondary strainer intercepts debris which could block the drain line.

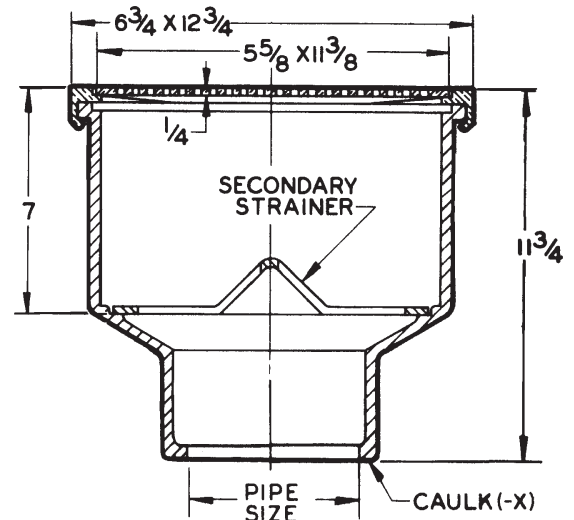
SPECIFICATION

JOSAM 49720-LF-NB Series rectangular cast iron 7" deep SUPER-FLO-SEPTOR® Floor Sink with acid-resisting interior, bottom outlet, aluminum internal dome strainer, Nikaloy rim and light-duty, anti-tilting, Nikaloy grate.

OPTION N/A: -C

TYPE NO.	PIPE SIZE	LBS.
49723-LF-NB	3	39
49724-LF-NB	4	38
49726-LF-NB	6	43

SLOT WIDTH 1/4"



GRATE FREE AREA 25 SQ. IN.

FOR OUTLET TYPE, SPECIFY -X.

49850 SERIES

FLUSHING RIM, 12" ROUND TOP

APPLICATION

For use in pedestrian traffic areas requiring a high degree of sanitation where solid waste may be present, such as hospital operating rooms, cystoscopic rooms, prison holding cells and animal research or other labs where undesirable materials can be flushed to the sewer. The flushing connection and flushing rim facilitate thorough cleaning with each flush. The white acid-resisting coated interior assures ease of sanitary maintenance.

SPECIFICATION

JOSAM 49850 Series round cast iron Floor Sink with acid-resisting interior, double drainage flange with weepholes, bottom outlet, inside caulk connection, flushing connections, bronze flushing rim, and Nikaloy round top with light-duty perforated hinged grate.

Options

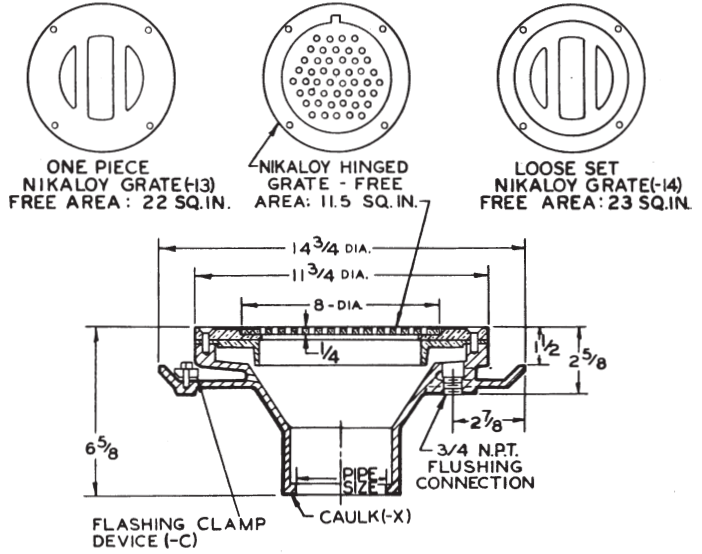
- VP Secured Grate, Vandal-Proof Screws
- 13 One-Piece Satin Nikaloy Grate
- 14 Loose-Set Satin Nikaloy Grate
- 51 Galvanized Cast Iron Inside and Outside
- 98 Water Supply Control Box
- C Clamp Device

OUTLETS

- X Inside Caulk Outlet, 2" - 4"
- Z No-Hub Spigot Outlet, 6"

Vacuum breaker should be installed subject to local code requirements.
*49852 & 49853 use a 49854 Body with a Reducing Coupling

TYPE NO.	PIPE SIZE	LBS.
49852*	2	42
49853*	3	42
49854	4	44
49856-Z	6	44



FOR OUTLET TYPE, SPECIFY -X.

49870A SERIES

CAN WASH DRAIN, 12" SQUARE TOP, 8" DEEP

APPLICATION

For use in areas where it is desired to wash the interior of garbage and other cans such as in commercial kitchens. The bronze spray nozzle cleanses the inside of the can and the grate and bucket prevent solids from entering the waste line. The white acid-resisting coated interior assures ease of sanitary maintenance.

SPECIFICATION

JOSAM 49870A Series square cast iron SUPER-FLO-SEPTOR® Can Wash Drain with acid-resisting interior, double drainage flange with weepholes, bottom outlet, removable sediment bucket, bronze spray nozzle assembly, Nikaloy rim and light-duty, Nikaloy, secured grate.

Options

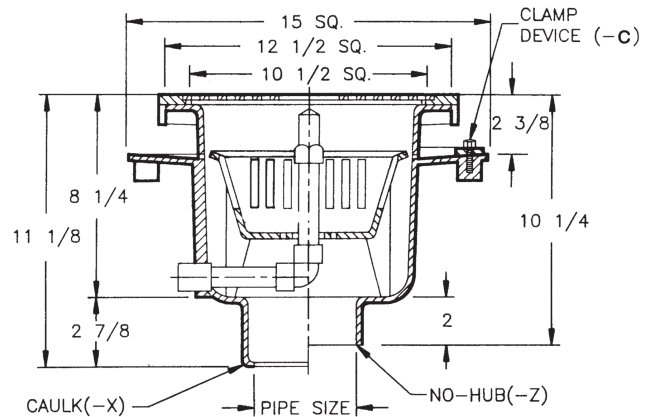
- VP Secured Grate, Vandal-Proof Screws
- 35 Stainless Steel Mesh Bucket Liner
- 51 Galvanized Cast Iron Inside and Outside
- 55 1/2" Primer Adapter, 88450 Provided
- 98 Water Supply Control Box
- C Clamp Device

OUTLETS

- X Inside Caulk Outlet
- Z No-Hub Spigot Outlet

Vacuum breaker should be installed subject to local code requirements.

SLOT WIDTH 3/8"



GRATE FREE AREA 35 SQ. IN.

FOR OUTLET TYPE, SPECIFY -X or -Z.

TYPE NO.	PIPE SIZE	LBS.
49873A	3	59
49874A	4	59