



Material: Polymer concrete

J1000

Lock: STANDARD locking device, CLIPFIX

Edge Protection: Galvanized edge

Accessories: Catchbasins
Solid & outlet end caps
Installation brackets
Chair brackets



J1000

Clear Width: 4" interior

Total Width: 5.1"

Edge protection: Integrated galvanized steel protected edge

Fall Options: Available with built in fall, neutral or stepped fall

Locking System: CLIPFIX locking recess or STANDARD

Outlet: 4" bottom or end outlet connection

Load Class: A, B, C, E



Channel Units Without Fall

Product Description	Length [inches]	Total Height [inches]	Product #	lbs/unit
J1000.0 ¹⁾	39.4	5.9	155401	29.8
J1000.1 ¹⁾²⁾	19.7	5.9	155403	15.4
J1005.0 ¹⁾	39.4	6.9	155415	34.2
J1005.1 ¹⁾²⁾	19.7	6.9	155417	18.7
J1010.0 ¹⁾	39.4	7.9	155429	37.9
J1010.1 ¹⁾²⁾	19.7	7.9	155431	22.0
J1015.0 ¹⁾	39.4	8.9	155443	42.8
J1015.1 ¹⁾²⁾	19.7	8.9	155445	25.3
J1020.0 ¹⁾	39.4	9.8	155457	47.8
J1020.1 ¹⁾²⁾	19.7	9.8	155459	27.6

1) With connection facility for vertical discharge outlet connector
Ø 4" or silt box/gully

2) Connecting facility for corner and cross junction

Channel Units For Stepped Fall

As connecting elements for stepped fall (with 2.5% fall)

Product Description	Length [inches]	Total Height [inches]	Product #	lbs/unit	
		start	end		
J1000-5	39.4	5.9	6.9	155461	32.2
J1005-10	39.4	6.9	7.9	155463	35.9
J1010-15	39.4	7.9	8.9	155465	39.9
J1015-20	39.4	8.9	9.8	155467	45.5

Note

For installation of stepped fall with neutral channels J1000.0 and J1005.0 connect with J1000-5.

CLIPFIX: Recesses in channel edge accepts grate with pre-attached lock device to ensure positive locking of grate to channel. Removal of grate provides an unobstructed channel cross section for simple cleaning. Available on J1000 and S1000.

Applications

Public Areas

- Galvanized protected edge provides clean, uniform edge to finish surface
- Select heel-proof perforated or slotted grates

Warehouse facilities

- Protected edge prevents chipping abuse from forklift wheels
- Select ductile iron or reinforced slotted grates to withstand heavy loads



J1000

Clear Width: 4" interior

Total Width: 5.1"

Edge protection: Integrated galvanized steel protected edge

Fall Options: Available with built in fall, neutral or stepped fall

Locking System: CLIPFIX locking recess or STANDARD lock bar

Outlet: 4" bottom or end outlet connection

Load Class: A, B, C, E



Channel units with linear fall (0.5%)

Product Description	Length [inches]	Total Height [inches]		Product #	lbs/unit
		start	end		
J1001	39.4	5.9	6.1	155405	30.4
J1002	39.4	6.1	6.3	155407	31.3
J1003	39.4	6.3	6.5	155409	32.2
J1004	39.4	6.5	6.7	155411	33.3
J1005*	39.4	6.7	6.9	155413	33.7
J1006	39.4	6.9	7.1	155419	34.0
J1007	39.4	7.1	7.3	155421	34.8
J1008	39.4	7.3	7.5	155423	35.7
J1009	39.4	7.5	7.7	155425	36.6
J1010*	39.4	7.7	7.9	155427	37.7
J1011	39.4	7.9	8.1	155433	38.1
J1012	39.4	8.1	8.3	155435	39.0
J1013	39.4	8.3	8.5	155437	39.9
J1014	39.4	8.5	8.7	155439	40.8
J1015*	39.4	8.7	8.9	155441	41.9
J1016	39.4	8.9	9.1	155447	43.4
J1017	39.4	9.1	9.2	155449	44.3
J1018	39.4	9.2	9.5	155451	45.2
J1019	39.4	9.5	9.7	155453	46.1
J1020*	39.4	9.7	9.8	155455	47.4

* With connection facility for vertical discharge outlet connector Ø 4" or silt box/gully

Note

On request channel elements with total height of 9.9 to 12.0 inches are available. (J1021-J1030)

CLIPFIX: Recesses in channel edge accepts grate with pre-attached lock device to ensure positive locking of grate to channel. Removal of grate provides an unobstructed channel cross section for simple cleaning. Available on J1000 and S1000.

Applications

Public Areas

- Galvanized protected edge provides clean, uniform edge to finish
- Select heel-proof perforated or slotted grates

Warehouse facilities

- Protected edge prevents chipping abuse from forklift wheels
- Select ductile iron or reinforced slotted grates to withstand heavy loads



J1000 Accessories

Silt Box



Clear Width: 4" interior

Material: Polymer Concrete

Edge protection: Galvanized Steel Edge Protection

Product Description	Length [inches]	Total Height [inches]	Product #	lbs/unit
J1000.EK	19.7	22.8	155484	54.0
J1000.EK LG 10 integrated roddable foul air trap and inline connection Ø 4"	19.7	22.8	155485	61.7
J1000.EK QG 10 integrated roddable foul air trap and side connection Ø 4"	19.7	22.8	155487	61.7
J1000.EK QG 15 integrated roddable foul air trap and side connection Ø 6"	19.7	22.8	155489	63.9

End Caps



Clear Width: 4" interior

Material: Polymer Concrete

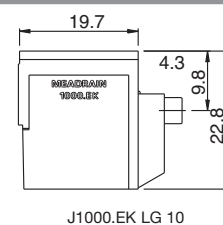
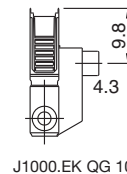
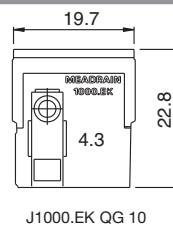
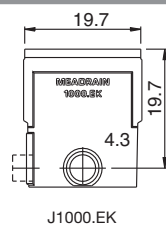
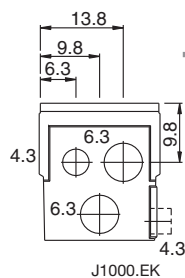
Edge protection: Galvanized Steel Edge Protection

Product Description	Product #	lbs/unit
J1000.SE for channel start and end	151471	3.1
J1000.E end cap with PVC outlet Ø 4" suitable for channel J1000	151473	1.8
J1005.E end cap with PVC outlet Ø 4" suitable for channel J1005	151475	2.0
J1010.E end cap with PVC outlet Ø 4" suitable for channel J1010	151477	2.2
J1015.E end cap with PVC outlet Ø 4" suitable for channel J1015	151479	2.7
J1020.E end cap with PVC outlet Ø 4" suitable for channel J1020	151481	2.8

Accessories For Connections



Product Description	Product #	lbs/unit
PVC outlet connector Ø 4.3"	154501	0.4
PVC outlet connector Ø 6.3"	154503	0.9
lip sealing ring Ø 4.3" for water-tight connection of J1000.EK	153883	0.1
lip sealing ring Ø 6.3" for water-tight connection of J1000.EK	153885	0.1
outlet connector set Ø 4.3" with connector pipe Ø 4.3", in-line dirt trap and odor seal	150730	0.4
1000 outlet bracket	150905	3.0
1000 extension bracket	150910	3.2



J1000 Grate Options

Width: 4.8"

Locking System: Non-bolted CLIPFIX



Loading Class A



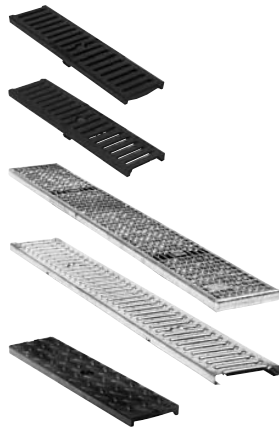
Product Description	Material	Length [inches]	Product #	Inlet Sectional Area [in ²]	lbs/unit
slotted grating	galv. steel	39.4	152103	43.4	5.3
slotted grating	galv. steel	19.7	152108	21.7	2.9
mesh grating 1.25/0.375 mesh	galv. steel	39.4	152203	122.5	5.1
mesh grating 1.25/0.375 mesh	galv. steel	19.7	152208	61.2	2.9



Loading Class B



Product Description	Material	Length [inches]	Product #	Inlet Sectional Area [in ²]	lbs/unit
mesh grating 1.25/0.375 mesh	galv. steel	39.4	152303	122.5	6.8
mesh grating 1.25/0.375 mesh	galv. steel	19.7	152308	61.5	3.5



Loading Class C



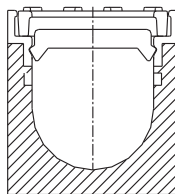
Product Description	Material	Length [inches]	Product #	Inlet Sectional Area [in ²]	lbs/unit
slotted grating 0.5" slots	ductile iron	19.7	152403	27.1	7.0
slotted grating 0.25" slots	ductile iron	19.7	152405	13.6	7.7
mesh grating 0.8/0.4 mesh	galv. steel	39.4	152603	122.5	11.0
mesh grating 0.8/0.4 mesh	galv. steel	19.7	152608	61.2	5.7
slotted grating	galv. steel	39.4	152713	43.4	12.1
slotted grating	galv. steel	19.7	152718	21.7	6.2
solid cover	ductile iron	19.7	152720	-	11.9



Loading Class E



Product Description	Material	Length [inches]	Product #	Inlet Sectional Area [in ²]	lbs/unit
slotted grating	ductile iron	19.7	152613	30.2	11.5



CLIPFIX

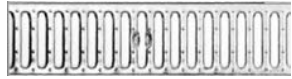
CLIPFIX: Recesses in channel edge accepts grate with pre-attached lock device to ensure positive locking of grate to channel. Removal of grate provides an unobstructed channel cross section for simple cleaning. Available on J1000 and S1000.

J1000 Grate Options

Clear Width: 4.8"

Locking System: STANDARD lock bar

Loading Class A



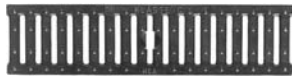
Product Description	Material	Length [inches]	Product #	Inlet Sectional area [in ²]	lbs/unit
slotted grating	galv. steel	39.4	152101	43.4	5.1
slotted grating	galv. steel	19.7	152106	21.7	2.7
mesh grating 1.25/0.375 mesh	galv. steel	39.4	152801	122.5	4.9
mesh grating 1.25/0.375 mesh	galv. steel	19.7	152806	61.2	2.7
perforated grating	galv. steel	39.4	152105	37.6	3.8
perforated grating	galv. steel	19.7	152107	18.8	2.0

Loading class B



Product Description	Material	Length [inches]	Product #	Inlet Sectional area [in ²]	lbs/unit
mesh grating 1.25/0.375 mesh	galv. steel	39.4	152301	122.5	6.6
mesh grating 1.25/0.375 mesh	galv. steel	19.7	152306	61.2	3.1

Loading class C



Product Description	Material	Length [inches]	Product #	Inlet Sectional area [in ²]	lbs/unit
slotted grating 0.5 slots	ductile iron	19.7	152411	27.1	7.0
slotted grating 0.25 slots	ductile iron	19.7	152541	13.5	7.7
mesh grating 0.8/0.4 mesh	galv. steel	39.4	152503	122.5	10.8
mesh grating 0.8/0.4 mesh	galv. steel	19.7	152508	61.2	5.7
slotted grating	galv. steel	39.4	152711	43.4	11.9
slotted grating	galv. steel	19.7	152731	21.7	5.9
perforated grating	galv. steel	39.4	152771	37.6	11.0
perforated grating	galv. steel	19.7	152775	18.4	5.1

Loading class E



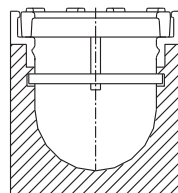
Product Description	Material	Length [inches]	Product #	Inlet Sectional area [in ²]	lbs/unit
slotted grating 0.5 slots	ductile iron	19.7	152611	30.2	11.0
slotted grating 0.2 slots	ductile iron	19.7	152761	14.5	11.5

Locking mechanism



Product Description	Material	Product #	lbs/unit
locking mechanism for slotted gratings	galv. steel	152116	0.4
locking mechanism for mesh & perforated grating	galv. steel	152311	0.4

For Optimal performance, use locking mechanism for load class C and above



STANDARD

STANDARD: Consists of a locking bar which fits in pre-formed recess in channel wall and stainless steel bolt (slotted or hex depending on grate type) which draws the grate to the bar. Available on all MEADRAIN Products.