



LZ1000 & LS1000

Material: Polymer Concrete
Clear Width: 4" interior
Total Width: 5.1"
Fall Options: Available without fall
Outlet: 4" bottom
Load Class: A, B, C
Grate: Top 1000

LZ1000



Edge Protection: Integrated Galvanized Steel Protected Edge
Locking System: STANDARD Locking Device and CLIPFIX Recess

Product Description	Length [inches]	Total Height [inches]	Product #	lbs/unit
LZ1000.0/80 SC	39.4	3.1	155571	19.0
LZ1000.A/80 SC*	39.4	3.1/3.3	155575	19.4
LZ1000.1/80 SC	19.7	3.1	155573	9.7

* Provided with preformed 4" outlet connector.

LS1000



Edge Protection: Integrated Stainless Steel Protected Edge
Locking System: STANDARD Locking Devices and CLIPFIX Recess

Product Description	Length [inches]	Total Height [inches]	Product #	lbs/unit
LS 1000.0/80 SC	39.4	3.1	155555	19.0
LS 1000.0 A/80 SC*	39.4	3.1/3.3	155559	19.4
LS 1000.1/80 SC	19.7	3.1	155557	9.7

* Provided with preformed 4" outlet connector.

Note

CLIPFIX: Recesses in channel edge accepts grate with pre-attached lock device to ensure positive locking of grate to channel. Removal of grate provides an unobstructed channel cross section for simple cleaning. Available on J1000 and S1000.

Applications

Parking Decks

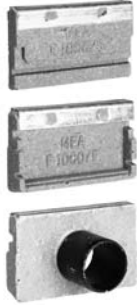
- Meet shallow depth requirement
- Wide selection of grate choices

Retrofit Applications

- Add in linear drainage with minimal excavation
- Suspend channel elements for simple installation

LZ1000 & LS1000 Accessories

End Caps



Material: Polymer Concrete

Edge protection: Galvanized Steel Protected Edge

Channel: LZ1000

Product Description	Product #	lbs/unit
LZ1000.S SC end cap for channel start	155577	1.1
LZ1000.F SC end cap for channel end	155579	1.1
LZ1000.E SC end cap for channel end with integrated outlet connector HD-PE Ø 2" Suitable for total height 3.15 inches	155581	1.1

End Caps



Material: Polymer Concrete

Edge protection: Galvanized Steel Protected Edge

Channel: LS1000

Product Description	Product #	lbs/unit
LS1000.S SC end cap for channel start	155583	1.1
LS1000.F SC end cap for channel end	155585	1.1
LS1000.E SC end cap for channel end with integrated outlet connector HD-PE Ø 2" Suitable for total height 3.15 inches	155587	1.1

Applications

Parking Decks

- Meet shallow depth requirement
- Wide selection of grate choices

Retrofit Applications

- Add in linear drainage with minimal excavation
- Suspend channel elements for simple installation

LZ1000 & LS1000 Grate Options

Clear Width: 4" interior

Total Width: 4.8"

Locking System: non-bolted CLIPFIX securement



Loading Class A



Product Description	Material	Length [inches]	Product #	Inlet Sectional Area [in ²]	lbs/unit
slotted grating	galv.steel	39.4	152103	43.4	5.3
slotted grating	galv.steel	19.7	152108	24.7	2.9
mesh grating 1.25/0.375 mesh	galv.steel	39.4	152203	122.5	5.1
mesh grating 1.25/0.375 mesh	galv.steel	19.7	152208	61.2	2.9



Loading Class B



Product Description	Material	Length [inches]	Product #	Inlet Sectional Area [in ²]	lbs/unit
mesh grating 1.25/0.375 mesh	galv.steel	39.4	152303	122.5	6.8
mesh grating 1.25/0.375 mesh	galv.steel	19.7	152308	61.2	3.5



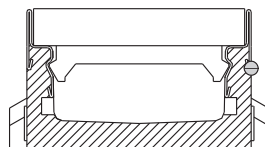
Loading Class C



Product Description	Material	Length [inches]	Product #	Inlet Sectional Area [in ²]	lbs/unit
slotted grating 0.5 / 3.54 slots	ductile iron	19.7	152403	27.1	7.0
slotted grating 0.25 / 3.54 slots	ductile iron	19.7	152405	13.5	7.7
mesh grating 0.8/0.4 mesh	galv.steel	39.4	152603	122.5	11.0
mesh grating 0.8/0.4 mesh	galv.steel	19.7	152608	61.2	5.7
slotted grating	galv.steel	39.4	152713	43.4	12.1
slotted grating	galv.steel	19.7	152718	21.7	6.2

Note

For additional grate options, see page 56.



CLIPFIX

CLIPFIX: Recesses in channel edge accepts grate with pre-attached lock device to ensure positive locking of grate to channel. Removal of grate provides an unobstructed channel cross section for simple cleaning. Available on J1000 and S1000.

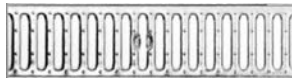
LZ1000 & LS1000 Grate Options

Clear Width: 4" interior

Total Width: 4.8"

Locking System: STANDARD lock bar

Loading Class A



Product Description	Material	Length [inches]	Product #	Inlet Sectional Area [in ²]	lbs/unit
slotted grating	stainless steel	39.4	152201	43.4	5.1
slotted grating	stainless steel	19.7	152206	21.7	2.7
mesh grating 1.25/0.375 mesh	stainless steel	39.4	152901	122.5	4.9
mesh grating 1.25/0.375 mesh	stainless steel	19.7	152906	61.2	2.7
perforated grating	stainless steel	39.4	152205	37.6	3.8
perforated grating	stainless steel	19.7	152207	18.8	2.0

Loading Class C



Product Description	Material	Length [inches]	Product #	Inlet Sectional Area [in ²]	lbs/unit
mesh grating 1.25/0.375 mesh	stainless steel	39.4	152513	122.5	9.9
mesh grating 1.25/0.375 mesh	stainless steel	19.7	152518	61.2	5.1
slotted grating	stainless steel	39.4	152755	43.4	11.5
slotted grating	stainless steel	19.7	152757	21.7	5.7
perforated grating	stainless steel	39.4	152781	37.6	11.9
perforated grating	stainless steel	19.7	152785	18.8	6.0

Locking mechanism for shallow channel height 3.15 inches

Requires a traffic safe installation of gratings until loading class C



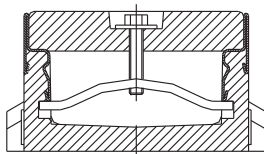
Product Description	Material	Product #	lbs/unit
slotted grating locking mechanism* mesh- and perforated grating	galvanized	154523	0.4
locking mechanism* mesh- and perforated grating	galvanized	154525	0.4

* bolt and washer are from stainless steel, swing toggle from galvanized steel

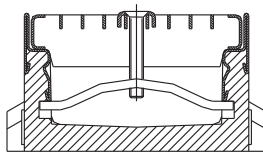
Note

For additional grate options, see page 56.

2 locking mechanisms per 39.4" required.



Shallow channel slotted lock mechanism.



Shallow channel mesh grating lock mechanism.

STANDARD: Consists of a locking bar which fits in pre-formed recess in channel wall and stainless steel bolt (slotted or hex depending on grate type) which draws the grate to the bar. Available on all MEADRAIN Products. STANDARD locking mechanism not suitable for shallow drainage channel of 2.36 inches total height.