



JOSAM

*Push-Fit
Stainless Steel Drainage System*

LIST PRICE SHEET

Effective May 2, 2016

www.josam.com


 **WARNING:** Cancer and Reproductive Harm - www.p65warnings.ca.gov

TABLE OF CONTENTS

Terms and ConditionsPage 1

Josam Push-Fit Advantages Page 2

Push-Fit Stainless Steel Pipe Page 3

Push-Fit Stainless Steel Fittings.Page 4-6

**Push-Fit Stainless Steel Gaskets, Accessories
and Transition CouplingsPage 7**

Josam Stainless Steel Drainage Products. Page 8

 **WARNING:** Cancer and Reproductive Harm - www.p65warnings.ca.gov

NUMERICAL INDEX

SERIES NUMBER	PAGE NUMBER	SERIES NUMBER	PAGE NUMBER	SERIES NUMBER	PAGE NUMBER	SERIES NUMBER	PAGE NUMBER
JA SERIES		JA SERIES CONTINUED		JF SERIES CONTINUED		JF SERIES CONTINUED	
JA-3000	7	JA-4100	7	JF-0472	4	JF-0814	4
JA-3002	7	JA-4101	7	JF-0474	4	JF-0816	4
JA-3004	7	JA-4200	7	JF-0604	4	JF-0818	4
JA-3006	7	JA-4201	7	JF-0606	4	JF-0820	4
JA-3008	7	JA-4300	7	JF-0608	4	JF-0822	4
JA-3012	7	JA-4301	7	JF-0610	4	JF-0902	4
JA-3014	7	JA-4400	7	JF-0614	4	JF-0904	4
JA-3020	7	JA-4401	7	JF-0616	4	JF-0906	4
JA-3022	7	JA-4600	7	JF-0650	4	JF-0908	4
JA-3024	7	JA-4601	7	JF-0652	4	JF-0910	4
JA-3026	7	JA-4602	7	JF-0654	4	JF-0912	4
JA-3028	7	JA-4800	7	JF-0656	4	JF-0914	4
JA-3030	7	JA-4801	7	JF-0660	4	JF-0916	4
JA-3032	7			JF-0662	4	JF-0918	4
JA-3040	7	JF SERIES		JF-0720	4	JF-0920	4
JA-3042	7	JF-0188	4	JF-0722	4	JF-0926	4
JA-3044	7	JF-0190	4	JF-0724	4	JF-0928	4
JA-3046	7	JF-0192	4	JF-0726	4	JF-0930	4
JA-3050	7	JF-0460	4	JF-0730	4	JF-0934	4
JA-3052	7	JF-0462	4	JF-0732	4	JF-0936	4
JA-3100	7	JF-0464	4	JF-0810	4	JF-0938	4
		JF-0468	4				

NUMERICAL INDEX CONTINUED

SERIES NUMBER	PAGE NUMBER	SERIES NUMBER	PAGE NUMBER	SERIES NUMBER	PAGE NUMBER	SERIES NUMBER	PAGE NUMBER
JF SERIES CONTINUED		JF-1862	4	JF-2482	6	JP-FPM-0300	7
JF-1312	5	JF SERIES CONTINUED		JF SERIES CONTINUED		JP SERIES CONTINUED	
JF-1313	5	JF-1864	4	JF-2484	6	JP-FPM-0400	7
JF-1314	5	JF-1867	4	JF-2486	6	JP-FPM-0600	7
JF-1315	5	JF-1874	4	JF-2490	6	JP-FPM-0800	7
JF-1316	5	JF-1877	4	JF-2492	6	JP-0108	3
JF-1318	5	JF-1878	4	JF-2506	6	JP-0116	3
JF-1319	5	JF-1920	5	JF-2508	6	JP-0125	3
JF-1320	5	JF-1922	5	JF-2510	6	JP-0133	3
JF-1322	5	JF-1926	5	JF-2512	6	JP-0149	3
JF-1324	5	JF-1928	5	JF-2514	6	JP-0166	3
JF-1336	5	JF-1934	5	JF-6499	6	JP-0182	3
JF-1338	5	JF-1936	5	JF-6500	6	JP-0198	3
JF-1342	5	JF-1944	5	JF-6501	6	JP-0208	3
JF-1348	5	JF-1952	5	JF-6502	6	JP-0216	3
JF-1352	5	JF-1956	5	JF-6504	6	JP-0225	3
JF-1354	5	JF-1960	5	JF-6505	6	JP-0233	3
JF-1537	5	JF-1962	5	JF-6550	6	JP-0249	3
JF-1538	5	JF-2003	5	JF-6552	6	JP-0266	3
JF-1540	5	JF-2004	5	JF-6554	6	JP-0282	3
JF-1542	5	JF-2005	5	JF-6556	6	JP-0298	3
JF-1544	5	JF-2006	5	JF-6560	6	JP-0308	3
JF-1546	5	JF-2007	5	JF-6562	6	JP-0316	3
JF-1548	5	JF-2008	5	JF-6570	6	JP-0325	3
JF-1552	5	JF-2009	5	JF-6572	6	JP-0333	3
JF-1554	5	JF-2010	5	JF-6574	6	JP-0349	3
JF-1556	5	JF-2045	5	JF-6576	6	JP-0366	3
JF-1557	5	JF-2046	5	JF-6580	6	JP-0382	3
JF-1558	5	JF-2048	5	JF-6582	6	JP-0398	3
JF-1602	5	JF-2050	5	JF-9000	6	JP-0408	3
JF-1604	5	JF-2054	5	JF-9002	6	JP-0416	3
JF-1608	5	JF-2056	5	JF-9004	6	JP-0425	3
JF-1610	5	JF-2138	6	JF-9006	6	JP-0433	3
JF-1616	5	JF-2139	6	JF-9010	6	JP-0449	3
JF-1618	5	JF-2140	6	JF-9012	6	JP-0466	3
JF-1626	5	JF-2142	6	JF-9016	6	JP-0482	3
JF-1630	5	JF-2144	6	JF-9018	6	JP-0498	3
JF-1632	5	JF-2156	6	JF-9020	6	JP-0608	3
JF-1636	5	JF-2168	6	JF-9022	6	JP-0616	3
JF-1638	5	JF-2188	6	JF-9026	6	JP-0625	3
JF-1698	5	JF-2190	6	JF-9028	6	JP-0633	3
JF-1700	5	JF-2194	6	JP SERIES		JP-0649	3
JF-1702	5	JF-2300	6	JP-EPDM-0100	7	JP-0666	3
JF-1704	5	JF-2302	6	JP-EPDM-0100V	7	JP-0682	3
JF-1706	5	JF-2306	6	JP-EPDM-0200	7	JP-0698	3
JF-1708	5	JF-2310	6	JP-EPDM-0200V	7	JP-0808	3
JF-1722	5	JF-2312	6	JP-EPDM-0300	7	JP-0816	3
JF-1726	5	JF-2314	6	JP-EPDM-0300V	7	JP-0825	3
JF-1851	4	JF-2460	6	JP-EPDM-0400	7	JP-0833	3
JF-1852	4	JF-2462	6	JP-EPDM-0600	7	JP-0849	3
JF-1854	4	JF-2464	6	JP-EPDM-0800	7	JP-0866	3
JF-1856	4	JF-2466	6	JP-FPM-0100	7	JP-0882	3
JF-1860	4	JF-2480	6	JP-FPM-0200	7	JP-0898	3

TERMS AND CONDITIONS

PAYMENT TERMS:

For accounts with established credit, payment terms are 2% cash discount, payable 30 days from date of invoice, net 31 days. Invoices still unpaid after 31 days from date of invoice will be subject to interest charges of 1-1/2% per month. Confirmed irrevocable letter of credit or cash in advance of shipment is required for accounts without an established line of credit. Any terms and conditions appearing on your orders which are inconsistent with our quotation and conditions of sale shall be of no effect.

MINIMUM INVOICE:

\$50.00 net

FREIGHT ALLOWANCE:

All ground shipments will be F.O.B Philadelphia, PA. or shipping location. A freight allowance will be made on all shipments of \$5,000.00 net amount or more within the continental USA except for Alaska, Hawaii and Puerto Rico. Full freight allowance is limited to normal ground services and does not include charges for specially expedited or guaranteed deliveries requiring air shipment or guaranteed motor freight contracts.

RETURN POLICY:

Standard catalog material may be returned only upon written authorization of Seller. Credit will be issued to the Buyer's account toward purchase of additional material only. Material not in original condition, obsolete, discontinued or specially produced items will not be accepted for return or credit.

When return results from causes involving Buyer's responsibility, credit for goods in original condition will be issued at invoice price less 25% restocking charge for handling and inspection. Returns of less than \$100.00 net price will not be allowed. On all returns, incoming and outgoing freight charges to and from Josam Company will be deducted from any credit allowed. If material is returned and not in original condition and credit is denied, freight back to the buyer will be the responsibility of the buyer.

LIMITED WARRANTY:

Our products are warranted to be free of defects in material and workmanship, but our liability shall be limited solely to those defects, which our inspection finds to be due to our fault. Notification of a claim for defective material or workmanship must be given in writing to Josam Company within 60 days from date of shipment. **WE SHALL NOT BE RESPONSIBLE FOR ANY LABOR CHARGES OR ANY LOSS, INJURY OR DAMAGES WHATSOEVER, INCLUDING INCIDENTAL OR CONSEQUENTIAL DAMAGES.** The sole and exclusive remedy shall be limited to the replacement or repair of the defective goods at the Seller's discretion. Before installation and use, Buyer shall determine the suitability of this product for his intended use and the Buyer assumes all risk and liability whatever in connection therewith.

QUOTATIONS:

Quotations are based on discount in effect at the time of

quotation and will be protected on this basis for a period of 30- days from job bid due date. If an order is received within this 30 day period, it must indicate a release of material for shipment within 60 days from date of order, and all released shipments will be protected at prices quoted. If order is not released by customer within this 60 day period, it will be priced at discount prevailing at time of shipment.

ACCEPTANCE OF ORDERS:

All catalogs, price lists or other literature describing our products are not to be construed as offers to sell same. All orders are subject to acceptance by the general office of the Seller either by shipment or by written acceptance. Your order, when shipped or accepted by us, shall constitute the complete contract between us, subject to and incorporating therein the terms and conditions herein contained, and any inconsistent provisions contained in your order shall not apply. Prices, discounts and special programs contained in any of our catalogs, price lists or other literature are subject to change without notice.

CANCELLATION:

Orders are not subject to cancellation without our written consent. If an order is cancelled, the Buyer shall pay all costs incurred in connection with filling the order. Any items not catalog, specially made or not normally stocked by us and made or purchased to fill the order become the Buyer's property and must be paid for by the Buyer.

ILLUSTRATIONS, DESCRIPTIONS AND DIMENSIONS:

All illustrations, descriptions and detailed dimensions represent standard features and do not necessarily indicate all variations available. All weights stated in our catalogs, literature and drawings are approximate and are not guaranteed. All designs, descriptions and dimensions are subject to change without notice, and unless Buyer specifically states otherwise on order, standard products in effect at time order is shipped will be supplied.

RISKS:

Our responsibility ceases after the product has been delivered to the carrier in good order. It is the responsibility of the consignee to inspect each shipment carefully and file a claim with the carrier for any damage or shortage. Content shortages must be reported within 15 days after receipt of material.

DELIVERY:

Shipping dates are estimates and time of delivery is not the essence of this sale or the contract thereof. We will ship as near schedule as possible. Under no circumstances will the Seller have any responsibility on account of any delays in manufacture, transportation, or otherwise. Material is subject to shipment in whole or in part, at our option, and each shipment is subject to immediate invoicing.

TAXES:

Any sales or manufacturer's tax imposed under existing or future statutes shall be added to the price herewith and shall be paid by the Buyer unless proper exemption certificates are filed with Josam Company.

Josam's Push-Fit joining method results in cost effective installations.

Push-Fit the Josam Way

Josam's Push-Fit joint is accomplished by lubricating the joint and pushing the spigot and socket together. The result of this quick and easy joining method is a tight seal that has been tested and proven suitable for both gravity and vacuum applications. Additionally, test results have demonstrated that the Josam Push-Fit joint is pressure rated at least 4 times higher than other stainless steel push-fit systems.

Product and Size Range

Josam Company offers a complete range of pipes, fittings and hanging accessories. Pipe and fittings are available in 1-1/2", 2", 3", 4", 6" and 8" nominal pipe sizes. Pipes are available in 8 different lengths ranging from 0.8 feet to 9.8 feet, allowing for minimal field cuts. A complete range of stainless steel drains are also offered by Josam. For further details, please see Josam Company's Stainless Steel Drainage Product catalog

Packaging

Each pipe length is individually wrapped in a protective plastic covering. Sizeable pipe shipments from Josam are crated for protection against damage during shipment. Small pipe shipments may be shipped in protective tubes.

Markings

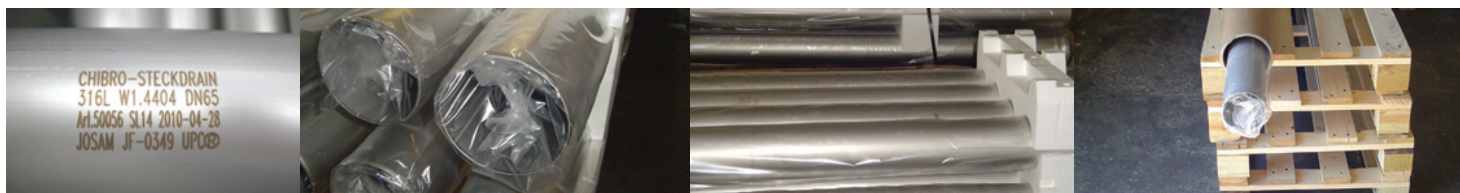
All Josam products are marked in accordance with applicable standards. Markings will include manufacturer's name and/or registered trademark, the grade of stainless steel, Josam name and part number and UPC®.

Listings and Approvals

Products meet or exceed the performance requirements of ASME A112.3.1-2007 and IGC 275-10. Most Josam products are IAPMO listed under File #6780. Please refer to the IAPMO website or contact Josam Company for a copy of this listing or state and local code approvals. Additional approvals include Registro Italiano Navale, Lloyd's Register, American Bureau of Shipbuilding, Det Norske Veritas, Bureau Veritas and Russian Maritime Register of Shipping. All manufacturing and quality assurance is in accordance with the internationally recognized ISO 9001 standard

Labor Savings

The Josam Push-Fit joining method allows joints to be made in a matter of seconds and does not require any tools. Connections are made by lubricating the spigot end and turning it into the socket end. Additionally, due to the fact that stainless steel is lighter in weight, the product is easier to handle and requires less manpower. Considering these two advantages with the life expectancy of the product, the Josam Push-Fit Stainless Steel System is an economical solution for most applications.



SERIES NUMBER	NOMINAL PIPE SIZE	LENGTH (FEET)	LIST PRICE
PUSH-FIT PIPE WITH EPDM GASKETED SOCKET			
JP-0108	1-1/2"	0.8	\$42.00
JP-0116	1-1/2"	1.6	\$66.00
JP-0125	1-1/2"	2.5	\$86.00
JP-0133	1-1/2"	3.3	\$106.00
JP-0149	1-1/2"	4.9	\$150.00
JP-0166	1-1/2"	6.6	\$190.00
JP-0182	1-1/2"	8.2	\$232.00
JP-0198	1-1/2"	9.8	\$276.00
JP-0208	2"	0.8	\$45.00
JP-0216	2"	1.6	\$69.00
JP-0225	2"	2.5	\$98.00
JP-0233	2"	3.3	\$125.00
JP-0249	2"	4.9	\$178.00
JP-0266	2"	6.6	\$228.00
JP-0282	2"	8.2	\$280.00
JP-0298	2"	9.8	\$307.00
JP-0308	3"	0.8	\$49.00
JP-0316	3"	1.6	\$78.00
JP-0325	3"	2.5	\$111.00
JP-0333	3"	3.3	\$140.00
JP-0349	3"	4.9	\$200.00
JP-0366	3"	6.6	\$256.00
JP-0382	3"	8.2	\$314.00
JP-0398	3"	9.8	\$344.00
JP-0408	4"	0.8	\$58.00
JP-0416	4"	1.6	\$100.00
JP-0425	4"	2.5	\$158.00
JP-0433	4"	3.3	\$178.00
JP-0449	4"	4.9	\$258.00
JP-0466	4"	6.6	\$338.00
JP-0482	4"	8.2	\$415.00
JP-0498	4"	9.8	\$453.00

SERIES NUMBER	NOMINAL PIPE SIZE	LENGTH (FEET)	LIST PRICE
PUSH-FIT PIPE WITH EPDM GASKETED SOCKET			
JP-0608	6"	0.8	\$108.00
JP-0616	6"	1.6	\$177.00
JP-0625	6"	2.5	\$275.00
JP-0633	6"	3.3	\$337.00
JP-0649	6"	4.9	\$422.00
JP-0666	6"	6.6	\$548.00
JP-0682	6"	8.2	\$725.00
JP-0698	6"	9.8	\$818.00
JP-0808	8"	0.8	\$214.00
JP-0816	8"	1.6	\$355.00
JP-0825	8"	2.5	\$455.00
JP-0833	8"	3.3	\$577.00
JP-0849	8"	4.9	\$710.00
JP-0866	8"	6.6	\$779.00
JP-0882	8"	8.2	\$973.00
JP-0898	8"	9.8	\$1,130.00

**All prices are for 316L stainless steel and include EPDM gravity gaskets.*

SERIES NUMBER	NOMINAL PIPE SIZE	LIST PRICE
PUSH-FIT SHORT 1/4 BEND		
JF-0188	1-1/2"	\$65.00
JF-0190	2"	\$81.00
JF-0192	3"	\$86.00
PUSH-FIT SWEEP 1/4 BEND		
JF-0460	1-1/2"	\$60.00
JF-0462	2"	\$72.00
JF-0464	3"	\$78.00
JF-0468	4"	\$102.00
JF-0472	6"	\$206.00
JF-0474	8"	\$1,002.00
PUSH-FIT 1/8TH BEND		
JF-0604	1-1/2"	\$45.00
JF-0606	2"	\$52.00
JF-0608	3"	\$58.00
JF-0610	4"	\$76.00
JF-0614	6"	\$206.00
JF-0616	8"	\$645.00
PUSH-FIT 15 DEGREE BEND		
JF-0650	1-1/2"	\$35.00
JF-0652	2"	\$39.00
JF-0654	3"	\$43.00
JF-0656	4"	\$60.00
JF-0660	6"	\$193.00
JF-0662	8"	\$276.00
PUSH-FIT 30 DEGREE BEND		
JF-0720	1-1/2"	\$35.00
JF-0722	2"	\$40.00
JF-0724	3"	\$45.00
JF-0726	4"	\$61.00
JF-0730	6"	\$193.00
JF-0732	8"	\$296.00

SERIES NUMBER	NOMINAL PIPE SIZE	LIST PRICE
PUSH-FIT SANITARY SWEEP TEE		
JF-0810	2"x2"	\$260.00
JF-0814	3"x2"	\$312.00
JF-0816	3"x3"	\$312.00
JF-0818	4"x2"	\$380.00
JF-0820	4"x3"	\$378.00
JF-0822	4"x4"	\$357.00
PUSH-FIT TEE		
JF-0902	1-1/2"X1-1/2"	\$65.00
JF-0904	2"x1-1/2"	\$70.00
JF-0906	2"x2"	\$75.00
JF-0908	3"x1-1/2"	\$81.00
JF-0910	3"x2"	\$88.00
JF-0912	3"x3"	\$88.00
JF-0914	4"x1-1/2"	\$101.00
JF-0916	4"x2"	\$107.00
JF-0918	4"x3"	\$95.00
JF-0920	4"x4"	\$116.00
JF-0926	6"x3"	\$268.00
JF-0928	6"x4"	\$282.00
JF-0930	6"x6"	\$282.00
JF-0934	8"x4"	\$350.00
JF-0936	8"x6"	\$392.00
JF-0938	8"x8"	\$436.00
PUSH-FIT CROSS		
JF-1851	2x1-1/2"	\$187.00
JF-1852	2"x2"	\$210.00
JF-1854	3"x2"	\$235.00
JF-1856	3"x3"	\$240.00
JF-1860	4"x3"	\$289.00
JF-1862	4"x4"	\$309.00
JF-1864	6"x4"	\$395.00
JF-1867	6"x6"	\$509.00
JF-1874	8"x4"	\$612.00
JF-1877	8"x6"	\$768.00
JF-1878	8"x8"	\$981.00

**All prices are for 316L stainless steel and include EPDM gravity gaskets.*

SERIES NUMBER	NOMINAL PIPE SIZE	LIST PRICE
PUSH-FIT OFFSET DOUBLE TEE		
JF-1920	2"x1-1/2"	\$178.00
JF-1922	2"x2"	\$227.00
JF-1926	3"x2"	\$316.00
JF-1928	3"x3"	\$318.00
JF-1934	4"x3"	\$382.00
JF-1936	4"x4"	\$450.00
JF-1944	6"x4"	\$358.00
JF-1952	6"x6"	\$489.00
JF-1956	8"x4"	\$505.00
JF-1960	8"x6"	\$632.00
JF-1962	8"x8"	\$818.00
PUSH-FIT 45 DEGREE WYE		
JF-1312	1-1/2"x1-1/2"	\$91.00
JF-1313	2"x1-1/2"	\$98.00
JF-1314	2"x2"	\$112.00
JF-1315	3"x1-1/2"	\$127.00
JF-1316	3"x2"	\$134.00
JF-1318	3"x3"	\$128.00
JF-1319	4"x1-1/2"	\$138.00
JF-1320	4"x2"	\$164.00
JF-1322	4"x3"	\$147.00
JF-1324	4"x4"	\$160.00
JF-1336	6"x3"	\$320.00
JF-1338	6"x4"	\$327.00
JF-1342	6"x6"	\$327.00
JF-1348	8"x4"	\$520.00
JF-1352	8"x6"	\$719.00
JF-1354	8"x8"	\$719.00
PUSH-FIT 45 DEGREE DOUBLE WYE		
JF-1537	2"x1-1/2"	\$246.00
JF-1538	2"x2"	\$259.00
JF-1540	3"x2"	\$286.00
JF-1542	3"x3"	\$308.00
JF-1544	4"x2"	\$354.00
JF-1546	4"x3"	\$358.00
JF-1548	4"x4"	\$392.00
JF-1552	6"x4"	\$427.00
JF-1554	6"x6"	\$570.00
JF-1556	8"x4"	\$572.00
JF-1557	8"x6"	\$873.00
JF-1558	8"x8"	\$1,250.00

SERIES NUMBER	NOMINAL PIPE SIZE	LIST PRICE
PUSH-FIT 90 DEGREE OFFSET DOUBLE WYE		
JF-1602	2"X1-1/2"	\$269.00
JF-1604	2"x2"	\$280.00
JF-1608	3"x2"	\$423.00
JF-1610	3"x3"	\$417.00
JF-1616	4"x3"	\$428.00
JF-1618	4"x4"	\$435.00
JF-1626	6"x4"	\$455.00
JF-1630	6"x6"	\$607.00
JF-1632	8"x4"	\$685.00
JF-1636	8"x6"	\$993.00
JF-1638	8"x8"	\$1,095.00
PUSH-FIT COMBINATION WYE & 1/8TH BEND		
JF-1698	2"x2"	\$155.00
JF-1700	3"x2"	\$177.00
JF-1702	3"x3"	\$177.00
JF-1704	4"x2"	\$207.00
JF-1706	4"x3"	\$196.00
JF-1708	4"x4"	\$227.00
JF-1722	6"x4"	\$395.00
JF-1726	6"x6"	\$500.00
PUSH-FIT CONCENTRIC METRIC ADAPTER		
JF-2003	53mmx50mm	\$59.00
JF-2004	50mmx53mm	\$62.00
JF-2005	73mmx75mm	\$73.00
JF-2006	75mmx73mm	\$78.00
JF-2007	102mmx110mm	\$103.00
JF-2008	159mmx160mm	\$135.00
JF-2009	219mmx200mm	\$268.00
JF-2010	219mmx250mm	\$293.00
PUSH-FIT ACCESS PIPE		
JF-2045	1-1/2"	\$90.00
JF-2046	2"	\$107.00
JF-2048	3"	\$113.00
JF-2050	4"	\$134.00
JF-2054	6"	\$413.00
JF-2056	8"	\$535.00

**All prices are for 316L stainless steel and include EPDM gravity gaskets.*

SERIES NUMBER	NOMINAL PIPE SIZE	LIST PRICE
PUSH-FIT CONCENTRIC REDUCER		
JF-2138	2"x1-1/2"	\$48.00
JF-2139	3"x1-1/2"	\$64.00
JF-2140	3"x2"	\$77.00
JF-2142	4"x2"	\$102.00
JF-2144	4"x3"	\$84.00
JF-2156	6"x4"	\$138.00
JF-2168	8"x6"	\$267.00
PUSH FIT ECCENTRIC REDUCER		
JF-2188	2"x1-1/2"	\$56.00
JF-2190	3"x2"	\$61.00
JF-2192	4"x2"	\$81.00
JF-2194	4"x3"	\$67.00
PUSH-FIT FEMALE THREADED ADAPTER		
JF-2300	1-1/2"x1"	\$53.00
JF-2302	1-1/2"x1-1/4"	\$59.00
JF-2306	1-1/2"x1-1/2"	\$59.00
JF-2310	2"x1-1/4"	\$72.00
JF-2312	2"x1-1/2"	\$93.00
JF-2314	2"x2"	\$95.00
PUSH-FIT EXPANSION PLUG		
JF-2460	1-1/2"	\$47.00
JF-2462	2"	\$49.00
JF-2464	3"	\$51.00
JF-2466	4"	\$62.00
PUSH-FIT BLIND PLUG		
JF-2480	1-1/2"	\$22.00
JF-2482	2"	\$24.00
JF-2484	3"	\$25.00
JF-2486	4"	\$31.00
JF-2490	6"	\$66.00
JF-2492	8"	\$99.00
PUSH-FIT P-TRAP		
JF-2506	1-1/2"	\$228.00
JF-2508	2"	\$247.00
JF-2510	3"	\$295.00
JF-2512	4"	\$351.00
JF-2514	6"	\$557.00

-CO Option (P-Trap w/ C.O. avail upon request)

SERIES NUMBER	NOMINAL PIPE SIZE	LIST PRICE
PUSH-FIT DOUBLE COUPLING		
JF-6499	1-1/2"	\$35.00
JF-6500	2"	\$38.00
JF-6501	3"	\$42.00
JF-6502	4"	\$51.00
JF-6504	6"	\$118.00
JF-6505	8"	\$127.00
PUSH-FIT SLIP COUPLING		
JF-6550	1-1/2"	\$28.00
JF-6552	2"	\$31.00
JF-6554	3"	\$36.00
JF-6556	4"	\$48.00
JF-6560	6"	\$117.00
JF-6562	8"	\$154.00
PUSH-FIT LONG EXPANSION SOCKET		
JF-6570	1-1/2"	\$95.00
JF-6572	2"	\$113.00
JF-6574	3"	\$144.00
JF-6576	4"	\$170.00
JF-6580	6"	\$472.00
JF-6582	8"	\$630.00
PUSH-FIT 150# FEMALE FLANGE ADAPTER		
JF-9000	1-1/2"	\$510.00
JF-9002	2"	\$532.00
JF-9004	3"	\$751.00
JF-9006	4"	\$1,090.00
JF-9010	6"	\$2,297.00
JF-9012	8"	\$2,975.00
PUSH-FIT 150# MALE FLANGE ADAPTER		
JF-9016	1-1/2"	\$510.00
JF-9018	2"	\$532.00
JF-9020	3"	\$751.00
JF-9022	4"	\$1,090.00
JF-9026	6"	\$2,297.00
JF-9028	8"	\$2,975.00

*All prices are for 316L stainless steel and include EPDM gravity gaskets.

SERIES NUMBER	NOMINAL PIPE SIZE	LIST PRICE
PUSH-FIT EPDM GRAVITY GASKETS		
JP-EPDM-0100	1-1/2"	\$4.50
JP-EPDM-0200	2"	\$5.00
JP-EPDM-0300	3"	\$5.00
JP-EPDM-0400	4"	\$5.00
JP-EPDM-0600	6"	\$9.00
JP-EPDM-0800	8"	\$9.00
PUSH-FIT EPDM VACUUM GASKETS		
JP-EPDM-0100V	1-1/2"	\$4.50
JP-EPDM-0200V	2"	\$5.00
JP-EPDM-0300V	3"	\$5.00
PUSH-FIT FPM GASKETS		
JP-FPM-0100	1-1/2"	\$13.00
JP-FPM-0200	2"	\$14.00
JP-FPM-0300	3"	\$20.00
JP-FPM-0400	4"	\$47.00
JP-FPM-0600	6"	\$56.00
JP-FPM-0800	8"	\$141.00
ADJUSTABLE PIPE HANGERS		
JA-3020	1-1/2"	\$95.00
JA-3022	2"	\$101.00
JA-3024	3"	\$108.00

SERIES NUMBER	NOMINAL PIPE SIZE	LIST PRICE
ADJUSTABLE PIPE HANGERS		
JA-3026	4"	\$110.00
JA-3030	6"	\$113.00
JA-3032	8"	\$149.00
NON-ADJUSTABLE PIPE HANGERS		
JA-3040	1-1/2"	\$76.00
JA-3042	2"	\$82.00
JA-3044	3"	\$89.00
JA-3046	4"	\$91.00
JA-3050	6"	\$94.00
JA-3052	8"	\$130.00
PUSH-FIT JOINT LUBRICANT		
JA-3100		\$37.00
PUSH FIT JOINT CLAMPS		
JA-3002	1-1/2"	\$20.00
JA-3004	2"	\$21.00
JA-3006	3"	\$26.00
JA-3008	4"	\$30.00
JA-3012	6"	\$40.00
JA-3014	8"	\$95.00
SWAY BRACE		
JA-3000		\$19.00

SERIES NUMBER	NOMINAL PIPE SIZE	LIST PRICE
TRANSITION COUPLINGS		
JA-4100	Josam Push Fit SS 1-1/2"x1-1/2" Copper - No Shield	\$9.00
JA-4101	Josam Push Fit SS 1-1/2"x1-1/2" NH/Sch40/Glass - No Shield	\$9.00
JA-4200	Josam Push Fit SS 2"x2" NH/SV/Copper - No Shield	\$24.00
JA-4201	Josam Push Fit SS 2"x2" NH/SV/XH/SCH40/Glass - With Shield	\$35.00
JA-4300	Josam Push Fit SS 3"x3" NH/SV/XH/SCH40/Glass - With Shield	\$48.00
JA-4301	Josam Push Fit SS 3"x3" Copper - With Shield	\$40.00
JA-4400	Josam Push Fit SS 4"x4" NH/SV/XH/SCH40/Glass - With Shield	\$52.00
JA-4401	Josam Push Fit SS 4"x4" Copper - No Shield	\$31.00
JA-4600	Josam Push Fit SS 6"x6" XH - With Shield	\$69.00
JA-4601	Josam Push Fit SS 6"x6" NH/SV/Copper - With Shield	\$118.00
JA-4602	Josam Push Fit SS 6"x6" SCH40/Glass - With Shield	\$101.00
JA-4800	Josam Push Fit SS 8"x8" NH/SV/SCH40 - With Shield	\$112.00
JA-4801	Josam Push Fit SS 8"x8" Copper- With Shield	\$138.00

**All prices are for 316L stainless steel and include EPDM gravity gaskets.*

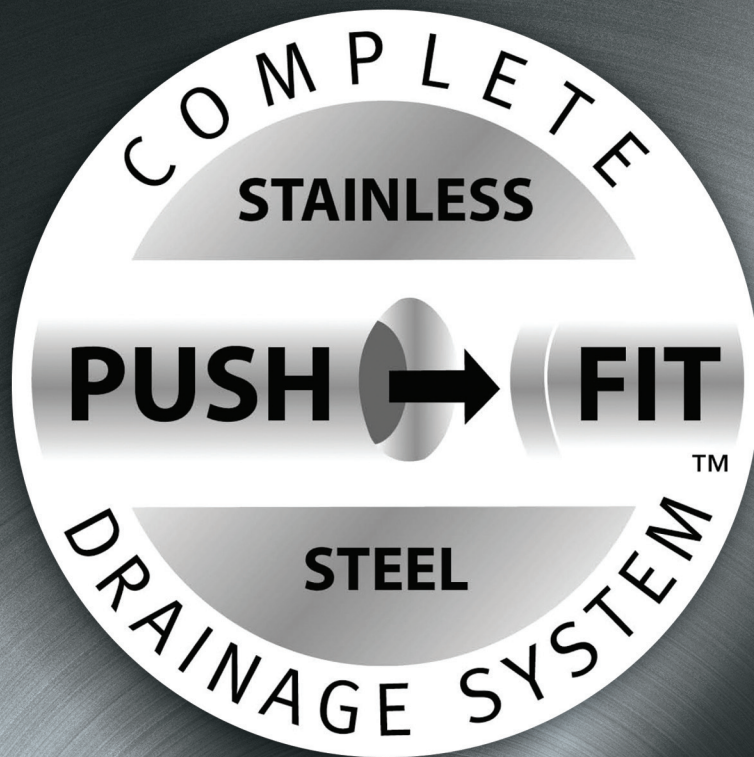
JOSAM STAINLESS STEEL DRAINAGE PRODUCTS



Manufactured by **ATT Inox**

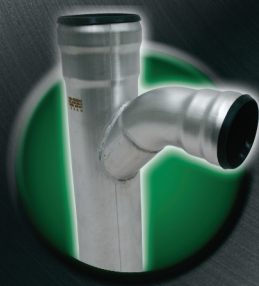
As a compliment to Josam Company's complete Stainless Steel Push-Fit Drainage System, Josam Company also provides a full range of stainless steel floor drains, trench drains and slot channels. All Josam drains are manufactured in type 304 and 316L austenitic stainless steel. In addition to a wide range of standard drains, Josam Company welcomes inquiries for customized products to suit individual requirements.

For more details on Josam Company's Stainless Steel Drainage Products please refer to the product catalog, contact your local Josam representative or visit our website at www.Josam.com.



JOSAM

Push-Fit Stainless Steel Drainage System



Executive Offices

2501 S. Front Street • Philadelphia, PA 19148
Phone: 215.339.5370 • Fax: 800.962.3312

Corporate Headquarters

525 West Highway 20 • Michigan City, IN 46360
Phone: 800.365.6726 • Fax: 800.627.0008

www.josam.com

Ver. 5-16