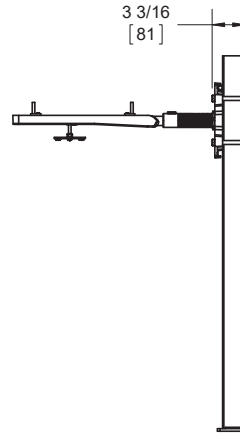
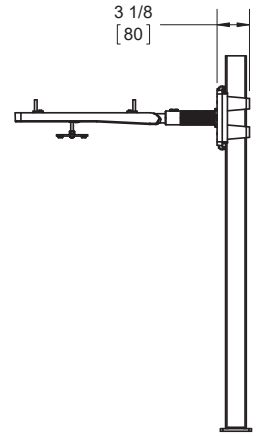


JOSAM

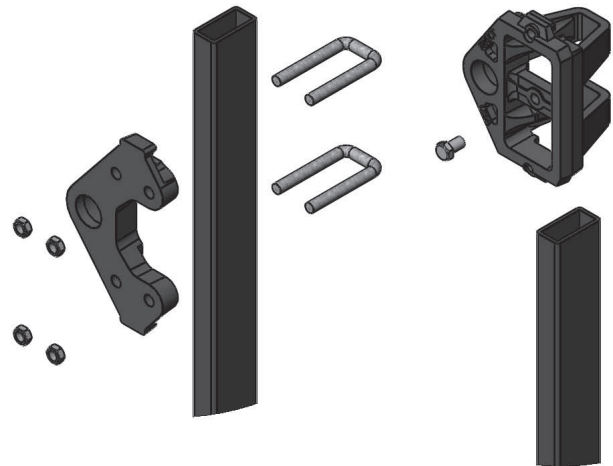
Labor Saving 17100 Lavatory Carrier



OLD DESIGN



NEW DESIGN



Features & Benefits

- Eliminated multiple parts for header installation
- Single bolt height adjustment
- Compact design fits easier into wall
- Slot foot adjustment for squaring uprights to wall
- Square upright design fits into today's wall construction
- Tested in Accordance with ASME A112.6.1M.

Josam Company | p 800-36-JOSAM | f 800-627-0008 | www.JOSAM.com

 **WARNING:** Cancer and Reproductive Harm - www.p65warnings.ca.gov

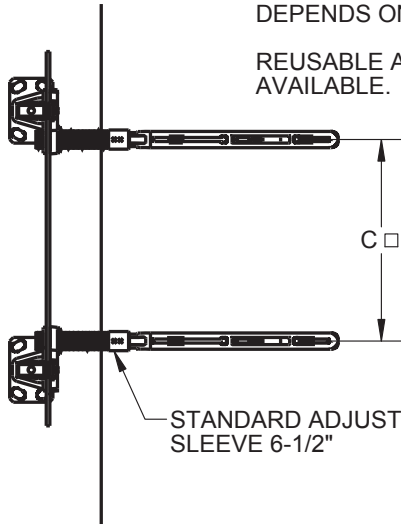
JOSAM

Labor Saving 17100 Lavatory Carrier

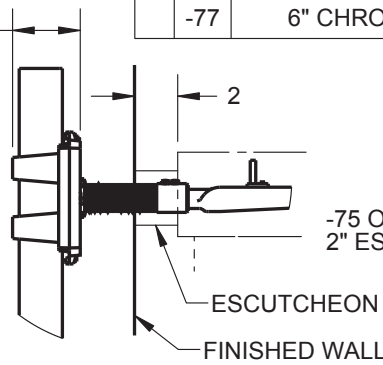
□: VARIABLE DIMENSION.
DEPENDS ON FIXTURE.

REUSABLE ALIGNMENT TOOL
AVAILABLE.

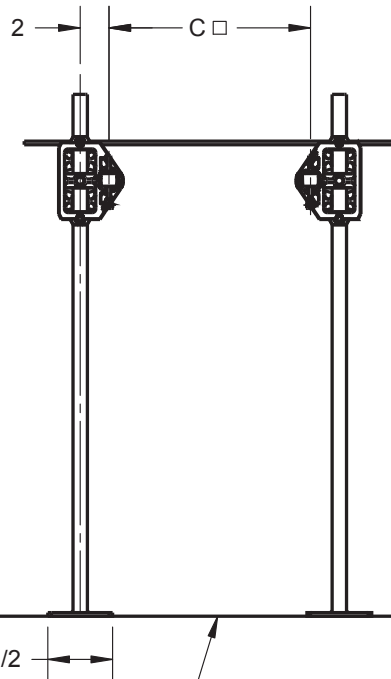
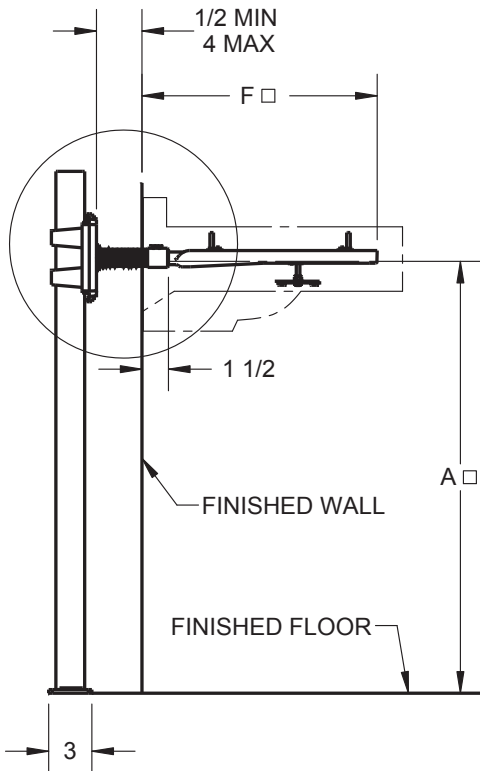
-BB	BACK-TO-BACK CARRIER (SEPARATE SUBMITTAL FOR THIS OPTION AVAILABLE)
-10	EXTENSION SLEEVES LONGER THAN STANDARD (SPECIFY WALL THICKNESS)
-60	VALVE PLATE FOR ATTACHING TO UPRIGHT
-67	CONCEALED ARM CARRIER FOR WHEELCHAIR LAVATORY
-75	2" CHROME PLATED ESCUTCHEONS
-76	4" CHROME PLATED ESCUTCHEONS
-77	6" CHROME PLATED ESCUTCHEONS



STANDARD ADJUSTABLE
SLEEVE 6-1/2"



-75 OPTION SHOWN:
2" ESCUTCHEON



MANUFACTURER

NUMBER

SIZE

NAME

DIMENSIONS

A _____

C _____

F _____

RIM HEIGHT
BASED ON "A" DIM SHOWN

JOSAM RECOMMENDS THAT ALL FEET
BE SECURED TO FLOOR WITH 1/2"
BOLTS AND ANCHORS BY OTHERS

Dimensions are subject to manufacturer's tolerances and subject to change without notice.
Josam Company assumes no responsibility for the use of superseded or voided data.

Josam Company | p 800-36-JOSAM | f 800-627-0008 | www.JOSAM.com

⚠ WARNING: Cancer and Reproductive Harm - www.p65warnings.ca.gov