

HEAR WHAT OTHERS ARE SAYING ABOUT OUR PRODUCTS:

Project - Columbia County Water Utility
Product - GI2000

I am very impressed with the new design of the GI2000, making it more compact and efficient. This will benefit the restaurant owner by having a more sanitary unit with less pump outs. Grease interceptors are an essential component of both the restaurant and the water utility. I look forward to seeing more products such as this in the future.

Thank you,
Scott Daniel

Environmental Compliance Officer
Columbia County Water Utility
Evans, GA



GREASE INTERCEPTORS

**GREASE RECOVERY
MADE SIMPLE**

NO MYSTERY. NO MESS.

JOSAM™

www.josam.com

Josam has a deep rooted heritage with a wealth of knowledge in the commercial plumbing drainage sector. Our products have become a staple in the building of all types of structures and the name has become synonymous with quality and dependability. The full product line includes carriers, roof drains, floor drains, grease interceptors, cleanouts, trench drains and a variety of other commercial plumbing/drainage products.

CUSTOMER SERVICE CENTERS

JOSAM CORPORATE
525 West Highway 20
Michigan City, IN 46360
800.36.JOSAM
F 800.627.0008

JOSAM EXECUTIVE
2501 S Front Street
Philadelphia, PA 19148
215.339.5370
F 800.962.3312

JOSAM WEST
2333 Grant Ave
San Lorenzo, CA 94580
510.481.6400
F 800.995.6726

WE'VE GOT YOU COVERED.

JOSAM™



 **WARNING:** Cancer and Reproductive Harm - www.p65warnings.ca.gov

COMMON INDUSTRY PROBLEMS:

For more than 50 years, standards have required interceptors, based on their size, to retain certain amounts of grease. Problems occur quickly after interceptors exceed those grease capacities.

PROBLEM:

Grease interceptors are closed containers. How do you know when to clean them?

SOLUTION:

Install a Josam grease sensing and alarm device in your interceptor or outside pit.

PROBLEM:

Cleaning a grease interceptor is a dirty job. Nobody wants to do it.

SOLUTION:

Install a Josam interceptor with an automatic grease removal device.

PROBLEM:

Grease interceptors with automatic grease removal devices tend to be mechanically complicated and expensive.

SOLUTION:

Josam grease removal devices offer an easy to use controller and are reasonably priced. Operation is also simple using a pump to remove grease once it reaches a specified level or once the timer reaches the end of its cycle.

PROBLEM:

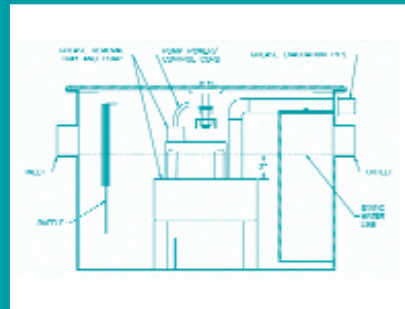
How do you ensure that your grease interceptor is being cleaned and avoid expensive fines?

SOLUTION:

Josam grease removal devices provide visual and/or electronic monitoring of the grease removal process via the internet.

WHAT IS A GREASE INTERCEPTOR AND HOW DOES IT WORK?

A grease interceptor is a plumbing device installed in the sanitary drainage system to intercept fats, oils and grease (FOG) from the waste water discharge. It works by slowing the flow of water into the interceptor, which allows the FOG time to separate from the waste water. The FOG is contained in the body of the interceptor allowing the FOG free water to pass downstream by exiting the interceptor via a trap leg. Hydro mechanical grease interceptors range in size from small 7gpm units to large 500gpm units. Units with installed grease removal devices are self-cleaning.



WHAT FIXTURES REQUIRE A GREASE INTERCEPTOR?

- Pot Sinks
- Rinse sinks or troughs attached to dishwashers
- Any sinks, fixtures or drains through which significant amounts of fats, oils, or grease may be introduced
- Soup kettles or similar devices
- Wok unit drains
- Automatic hood washers
- And much more

TECHNICAL SPECIFICATIONS

MODEL	FLOW RATE (GPM)	GREASE CAP.
EGOLD	10	100
CEGOLD	15	150
GI2000	20	200
GI2000	25	250
GI2000	30	300
GI2000	35	350
GI2000	40	400
GI2000	45	450
GI2000	50	500

Josam on the web - www.josam.com

- Library of technical drawings
- Get a quote
- Request a brochure
- Compare products
- View additional product lines

SOLVING THE MYSTERY,

SENSING AND ALARM DEVICES

SAP

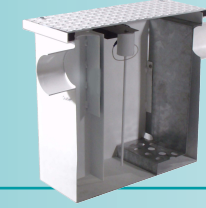
Sensing and Alarm Probe



- Powered by (2) 3.6 V lithium batteries: no wires to interceptor
 - Patented probe senses grease levels
 - Wall mounted controller with LED indicators & audible alarm
 - Universal installation bracket
 - Can relay to multiple alarms

EGOLD

Electronic Grease/Oil Level Detector



- Powered by UL listed 9V DC transformer
- Patented probe senses grease levels
- Wall mounted controller with LED indicators & audible alarm
- Calibration level is protected in memory in event of a power loss

CEGOLD

Electronic Grease/Oil Level Detector



- Powered by UL listed 9V DC transformer
- Patented probe senses grease levels
- Wall mounted controller with LED indicators & audible alarm
- Stainless steel frame for pre-cast concrete grease pit installation
- Calibration level is protected in memory in event of a power loss

CLEANING THE MESS.

AUTOMATIC GREASE RECOVERY DEVICES

Solids interceptor recommended to ensure optimum performance of units.

60100H-GRD

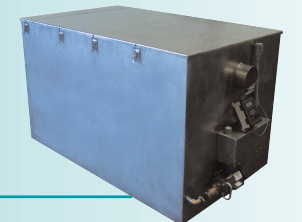
Timer Controlled, Grease Removal Pump



- Wall mounted programmable timer; 1-99 days
- 110V powered Grease Pump
- Reclaim tank with draw-off valve
- Current settings and elapsed days are protected in memory even in event of power loss

GI2000

Probe Controlled, Grease Removal Pump



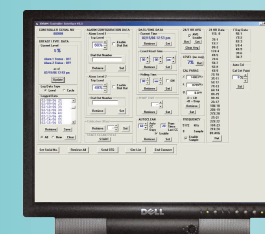
- Patented probe measures grease levels
- Nema encased controller with LCD, LED indicators
- Microprocessor records clean cycles and displays current status
- Heating elements to liquefy congealed grease
- Reclaim tank with float/auto shut-off to prevent overflow
- Powered by 220V, single phase

THE PROOF!

REMOTE MONITORING OPTIONAL

EGOLD, CEGOLD, GI2000

Website Performance Monitoring



- Monitor current status, cleaning cycle history