

**SPECIFICATION:**

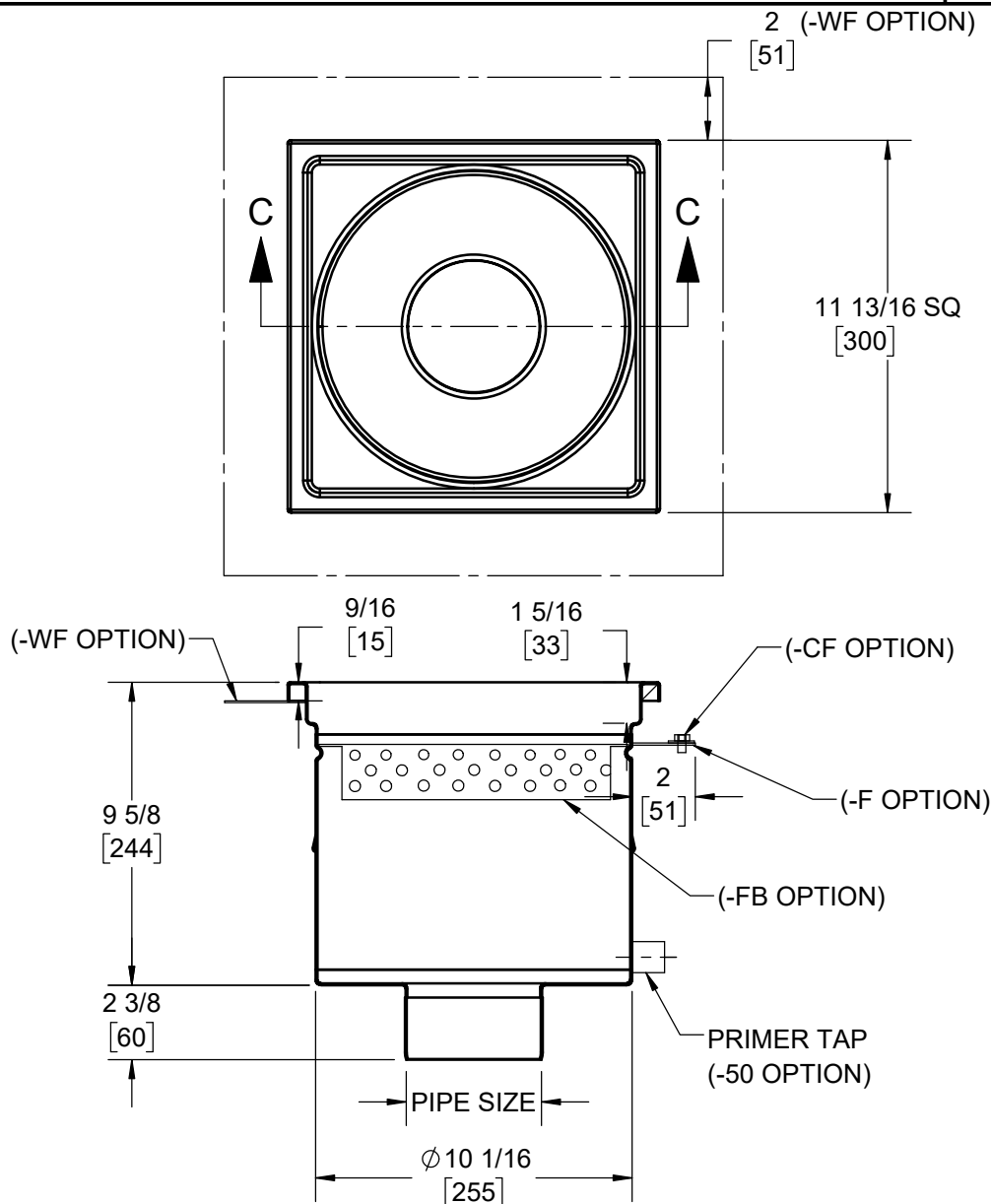
JOSAM SERIES 41650-HG FABRICATED STAINLESS STEEL ( TYPE 304, 14 GA ), 12" SQUARE TOP, 10" DEEP, WITH NO-HUB BOTTOM OUTLET, ANCHOR TABS AND PERFORATED SS 1/2 GRATE

**SS DRAIN**

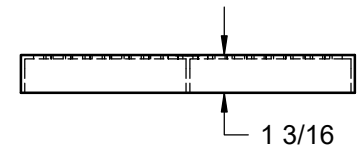
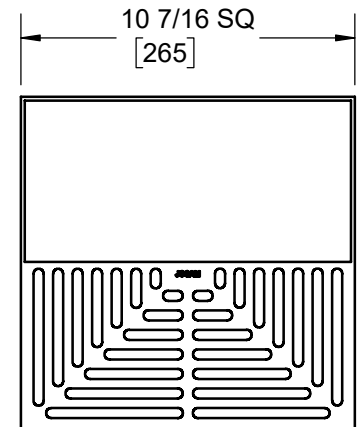
12" SQUARE TOP, 10" DEEP

SERIES

**41650-HG**



**PERFORATED 1/2 GRATE**  
 FREE AREA = 72.4 IN<sup>2</sup>



	MODEL	PIPE SIZE
	41653	3"
	41654	4"
	41656	6"

**OPTIONS:**

	-CWD	CAN WASH DRAIN
	-NB	NICKEL BRONZE RIM & GRATE (*ADD 0.5")
	-FB	FILTER BASKET
	-SB	SEDIMENT BUCKET
	-VP	SECURED GRATE
	-DB	DOME BOTTOM STRAINER
	-SO	SIDE OUTLET
	-50	1/2" PRIMER TAP
	-WH	WEEPHOLES (1 PER SIDE, $\phi$ 1/8")
	-T	THREADED OUTLET
	-PFO	PUSH-FIT SIZE OUTLET

	-WF	WIDE FLANGE
	-F	FLANGE, ANCHOR
	-CF	CLAMP AND FLANGE
	-BW	BUTT-WELD OUTLET (SPEC. 10, 40, 80)
	-NG	NO GRATE
X	-HG	PERF. HALF GRATE
	-3Q	PERF. 3/4 GRATE
	-MG	MESH, ANTI-SLIP GRATE
	-LG	LADDER GRATE
	-SG	PERIMETER SLOT GRATE
	-316	TYPE 316L MATERIAL

DATE OF LAST CHANGE: 09/01/21

DIMENSIONS ARE SUBJECT TO MANUFACTURERS TOLERANCES AND CHANGE WITHOUT NOTICE. WE CAN ASSUME NO RESPONSIBILITY FOR USE OF SUPERSEDED OR VOID DATA.

**JOSAM**  
 MICHIGAN CITY, INDIANA

NOTES