

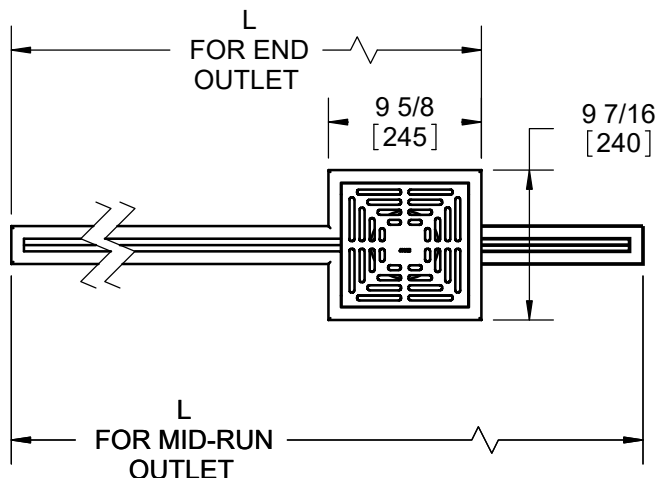
SPECIFICATION:

JOSAM SERIES 47200-HP FABRICATED STAINLESS STEEL (TYPE 304, 1.5 mm), HEEL-RESISTANT 5/16" DOUBLE SLOT, V-SHAPED BOTTOM, AVAILABLE WITH OR WITHOUT SLOPE (1% STD.), WITH ANCHOR TABS AND LEVELING FEET, OUTLET BOX WITH BOTTOM CONNECTION AND GRATE OPTIONS. RUN LENGTHS LONGER THAN 13' PROVIDED WITH FLANGES, GASKETS, AND HARDWARE.

SS SLOT CHANNEL

HEEL-RESISTANT
5/16" [20 mm] DOUBLE SLOTS
(XY)

SERIES **47200-HP**



SPECIFICATIONS:

☐ LINEAR RUN

TOTAL RUN LENGTH (L) = _____

START HT. (H1) (STD. 2-5/8" [65]) = _____

☐ HT. AT OUTLET BOX (H2) = _____

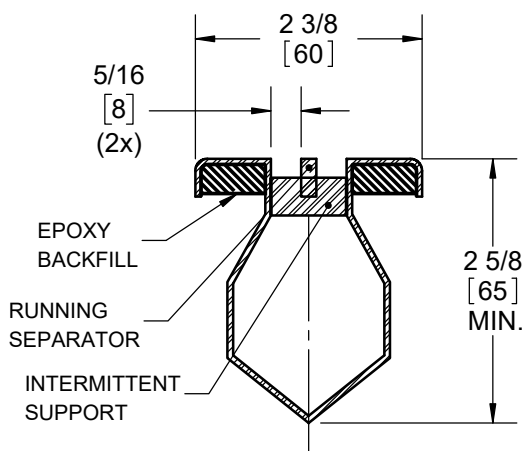
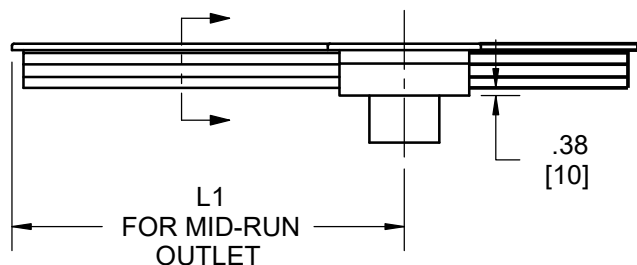
☐ OR STD 1% SLOPE

☐ OUTLET AT END OF RUN

☐ OUTLET MID-RUN (SPEC. LENGTH L1) = _____

☐ NON-LINEAR RUN

PROVIDE SKETCH WITH CRITICAL LENGTH AND HEIGHT DIMENSIONS AND OUTLET LOCATION(S).



AUTHORIZED PROJECT
SIGNATURE AND DATE:

NAME:

TITLE:

SIGNATURE:

DATE:

NOTE: ALL SS SLOT CHANNELS ARE CUSTOM
FABRICATED. ORDERS ARE NON-CANCELLABLE
AND NON-RETURNABLE.

* 2" AND 3" OUTLETS COME WITH FLAT STRAINER

OPTIONS:

-FB	FILTER BASKET*
-SB	SEDIMENT BUCKET (4" OUTLET ONLY)
-VP	SECURED GRATE
-316	TYPE 316L MATERIAL
-BW	BUTT-WELD OUTLET (SPEC. 10, 40, 80)

X = OUTLET BOX GRATE TYPE

0	NO GRATE
1	PERFORATED SHEET GRATE
2	ANTI-SLIP MESH GRATE
3	PERIMETER SLOT GRATE
4	LADDER GRATE

Y = OUTLET SIZE

2"
3"
4"

DATE OF LAST CHANGE: 01/21/25

DIMENSIONS ARE SUBJECT TO MANUFACTURERS
TOLERANCES AND CHANGE WITHOUT NOTICE.
WE CAN ASSUME NO RESPONSIBILITY FOR
USE OF SUPERSEDED OR VOID DATA.

JOSAM
MICHIGAN CITY, INDIANA

NOTES