

SPECIFICATION:

JOSAM 100-CIS-C-DC EPOXY-COATED, SOLID CAST IRON COVER WITH CENTER HOLE FOR LOCKING BAR SECUREMENT. DESIGNED TO FIT PRO-PLUS™ 100 SIZE CHANNEL. MEETS CLASS C LOAD RATING (56,000 LBS - 1,162 PSI). COVER HAS NO FREE AREA FOR DRAINAGE.

TRENCH DRAIN COVER

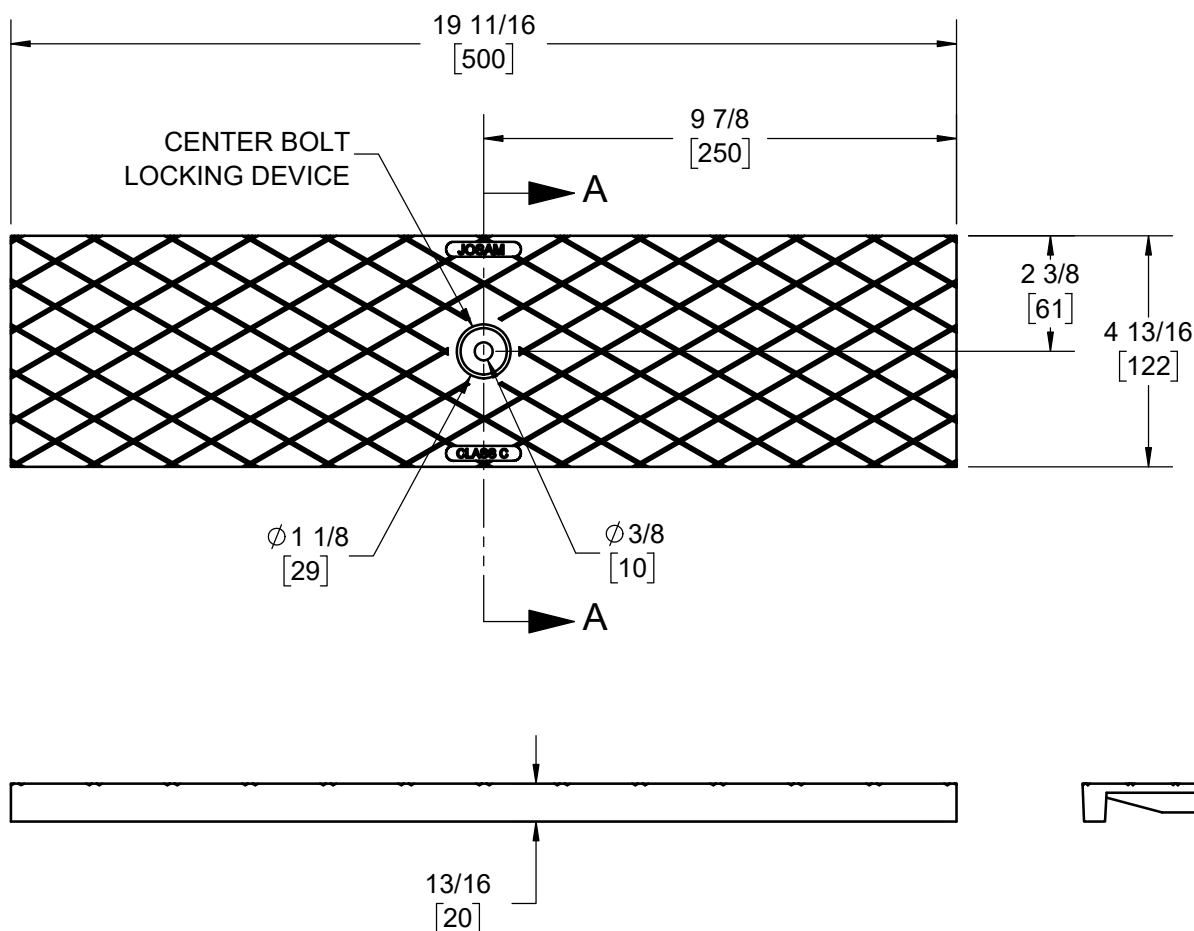
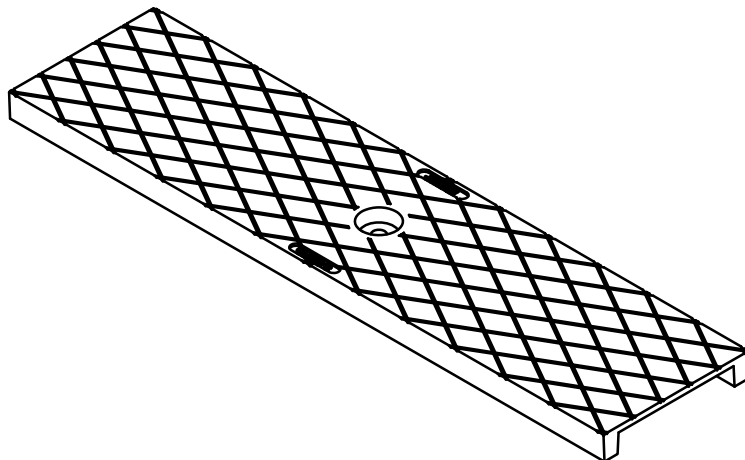
PRO-PLUS™ 100

SERIES **100-CIS-C-DC**

MADE IN USA



SECTION A-A
SCALE 1 : 4



LOCKING BAR (ORDER SEPERATELY)

360141

DATE OF LAST CHANGE: 2/26/20

DIMENSIONS ARE SUBJECT TO MANUFACTURERS TOLERANCES AND CHANGE WITHOUT NOTICE. WE CAN ASSUME NO RESPONSIBILITY FOR USE OF SUPERSEDED OR VOID DATA.

JOSAM
MICHIGAN CITY, INDIANA

NOTES