

17380-M1644

Lavatory Carrier

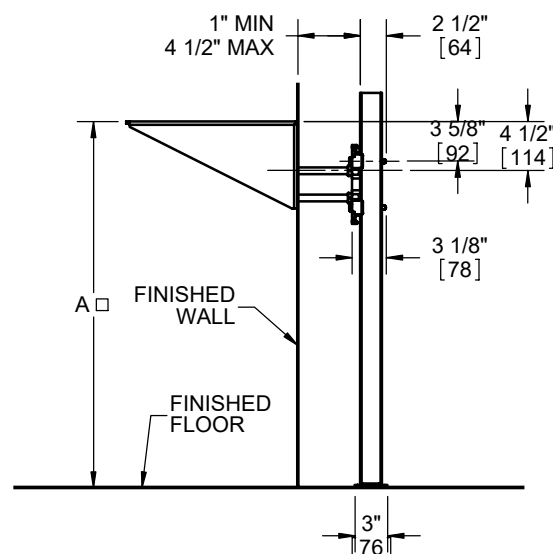
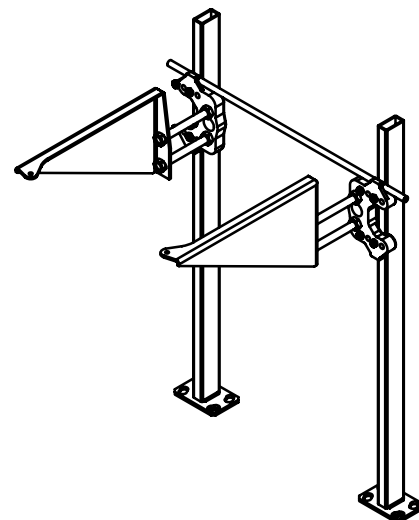
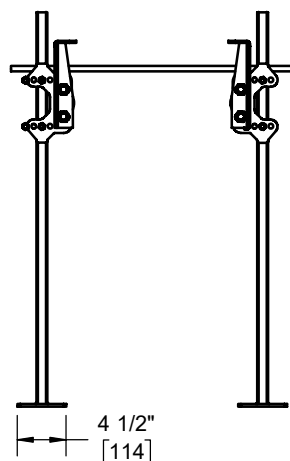
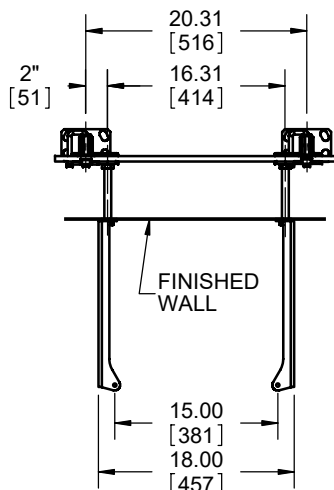
Floor-Mount Exposed Arm

Specification

Josam 17380-M1644 series floor-mounted, single lavatory carrier with exposed acid-resisting white coated arms, leveling and securing screws, structural uprights, welded feet and chrome plated trim.

Recommend all feet be secured to floor with 1/2" bolts and anchors by others.

☐ Variable dimension.
Depends on fixture.



Manufacturer
Sloan

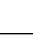
Number
SS-3000

Size
17"D X 19"W X 9"H

Name
Wall Hung Lav Sink

Dimensions

A _____

Rim height  based on "A" Dim shown

<input type="checkbox"/>	-BB	Back-to-back carrier
<input type="checkbox"/>	-HD	Heavy-duty
<input type="checkbox"/>	-VP	Vandal-proof trim

<input type="checkbox"/>	-10	Studs for walls over 4-1/2" (spec. wall thickness)
<input type="checkbox"/>	-60	Valve plate for attached to upright
<input type="checkbox"/>	-66	Split header for stainless steel arms

Josam product specifications in U.S. customary units are approximate and provided for reference only. For precise measurements, please contact Josam Technical Support. Josam reserves the right to change or modify product design, construction, specifications, or materials without prior notice and without incurring any obligation to make such changes and modifications on Josam products previously or subsequently sold.

Notes:



A WATTS Brand