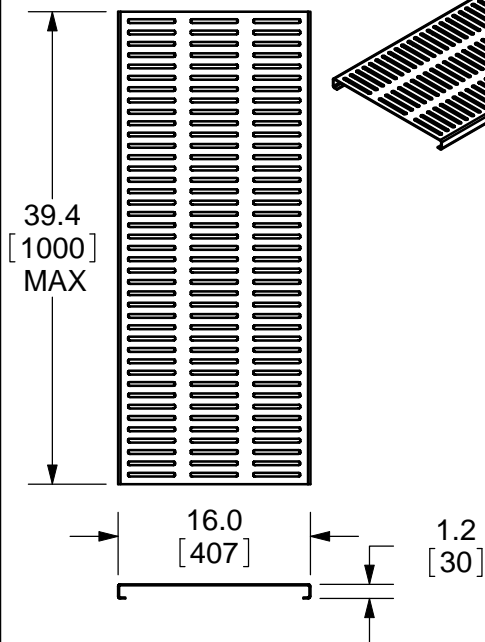


SPECIFICATION:

GRATE ASSORTMENT FOR JOSAM SERIES 46800 16" WIDE CHANNELS IN TYPE 304 MATERIAL (316L AVAILABLE).

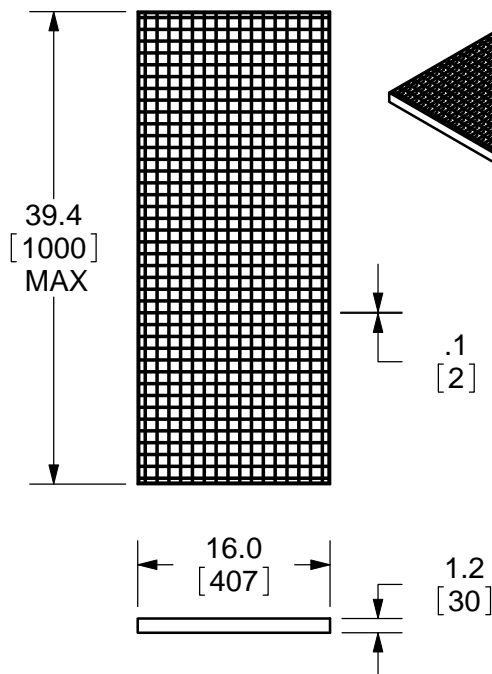
**SS TRENCH CHANNEL
GRATES 16" WIDE**

SERIES

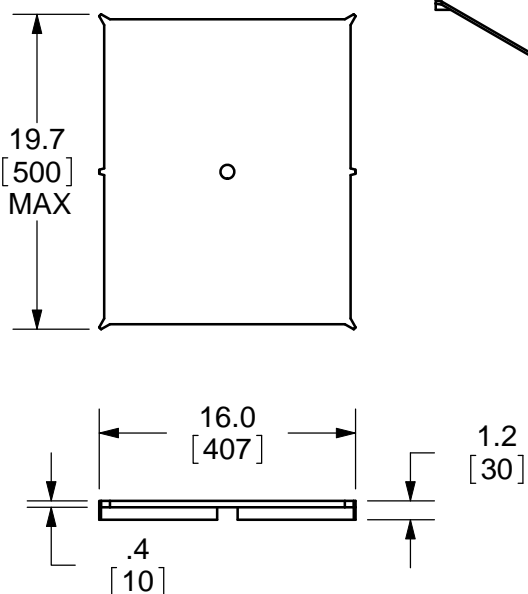
46800**46810 - PERFORATED**

SLOT WIDTH - .3" [8]
FREE AREA - 150 IN²

LOAD - LIGHT-DUTY
MEETS ADA AND HEEL-PROOF REQS.

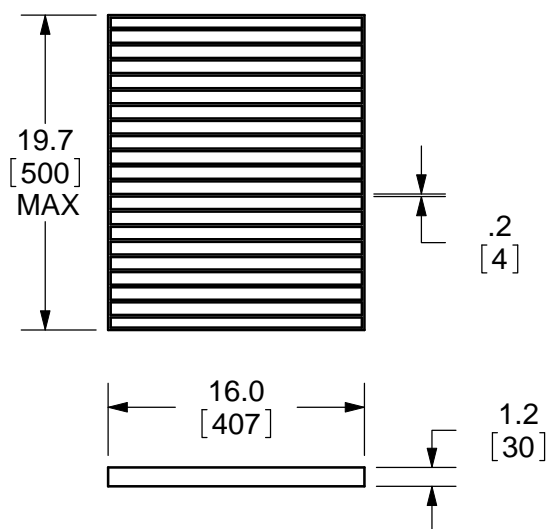
46820 - ANTI-SLIP MESH

OPENINGS - .9" X .9" [23 X 23]
LOAD - MEDIUM-DUTY

46830 - PERIMETER SLOT

SLOT WIDTH - .3" [8]
LOAD - EXTRA-HEAVY-DUTY

* RECOMMEND SOLID SS CHANNEL
EDGE BACKFILL FOR X-HEAVY DUTY
APPLICATIONS

46840 - LADDER

SLOT WIDTH - .8" [20]
LOAD - HEAVY-DUTY

DATE OF LAST CHANGE: 07/14/10

DIMENSIONS ARE SUBJECT TO MANUFACTURERS
TOLERANCES AND CHANGE WITHOUT NOTICE.
WE CAN ASSUME NO RESPONSIBILITY FOR
USE OF SUPERSEDED OR VOID DATA.

JOSAM COMPANY
MICHIGAN CITY, INDIANA

NOTES