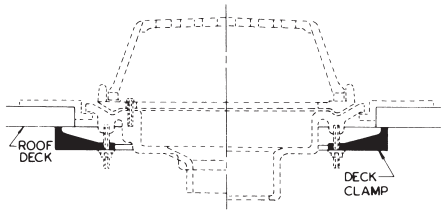


ROOF DRAINS

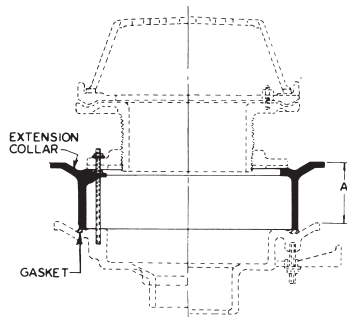
Options

The variations shown below illustrate and explain various roof drain components. These variations must be specified and installed when the type of roof construction dictates their use. See specific series for available options.



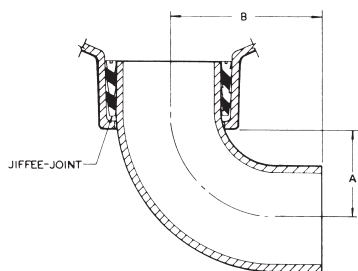
(-1) OPTION, DECK CLAMP

The deck clamp is the most dependable means by which the roof drain can be secured to the roof deck to insure a permanent bond that will prevent damage of flashing and membrane materials caused by movement and vibration. It is secured to the underside of the drain body with heavy-duty threaded rods, which provide adjustment to accommodate various slab or deck thicknesses, and is drawn tightly in place against the underside of the deck to form a positive union.



(-10) OPTION, FIXED EXTENSION COLLAR USED WITH LEVELEZE® DRAINS

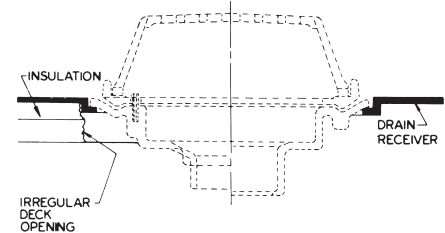
For roof or deck construction where base slab to surface height is greater than can be accommodated with the standard LEVELEZE® collar, the (-10) Fixed Extension Collar "A" is used along with the LEVELEZE® assembly. These collars can be used in multiples where extension requirements dictate. The Fixed Extension Collar can be cast in increments of 1, 2, 3 and 4 inches. Shorter or longer dimensions are available by cutting or stacking extensions



(-66) NO-HUB SIDE OUTLET

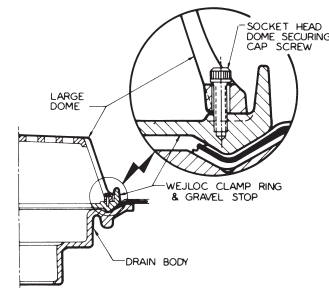
This option converts JOSAM bottom outlet inside caulk drains to no-hub side outlet drains using a 90° no-hub quarter bend and a JIFFEE-JOINT Gasket.

PIPE SIZE	A	B
2	2-1/2	4-1/2
3	2-13/16	5
4	3-1/2	5-1/2
5	4-5/16	6-1/2
6	4-13/16	7



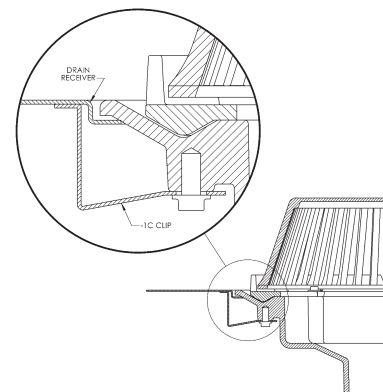
(-2) OPTION, DRAIN RECEIVER

The drain receiver is recommended for use in all roof drain installations regardless of deck construction and is of particular importance when used in conjunction with drains installed in decks where support is on insulation. The drain receiver is produced in heavy gauge steel, coated for protection, and embodies a recessed flange to carry the drain, and a wide flange to support the assembly on the roof. The drain receiver distributes the weight of the roof drain evenly over the deck and compensates for irregular and misaligned deck openings.



(-VP) OPTION, VANDAL-PROOF SECURED DOME

Where vandalism or mischievous activity is anticipated, it is advisable to specify vandal-proof domes on roof drains. All JOSAM precision-molded plastic large domes incorporate bayonet locking devices as standard equipment; however, when specified vandal-proof, they are further secured with screws to insure permanence of assembly. Other types of domes can also be vandal-proofed when specified.



(-1C) OPTION, DRAIN RECEIVER CLIP

To be utilized with the (-2) Optional Drain Receiver, to secure the roof drain body directly to the receiver. Simply position the drain outlet face up, position drain receiver over the drain body and attach the four receiver clips with the hardware provided. Invert body and install the assembly into the deck opening. If necessary, secure assembly to the metal deck with self-tapping screws (by others).