

60115A/60117A SERIES

MANUAL CLEANING, LOW TYPE

APPLICATION

For use in restaurant and institutional kitchens and all types of food handling and processing areas where waste water contains fats, oil and grease (FOG). Adequate space and head room for removal of cover must be available for manual cleaning. Low profile interceptor designed to fit on the floor under equipment in a limited space.

SPECIFICATION

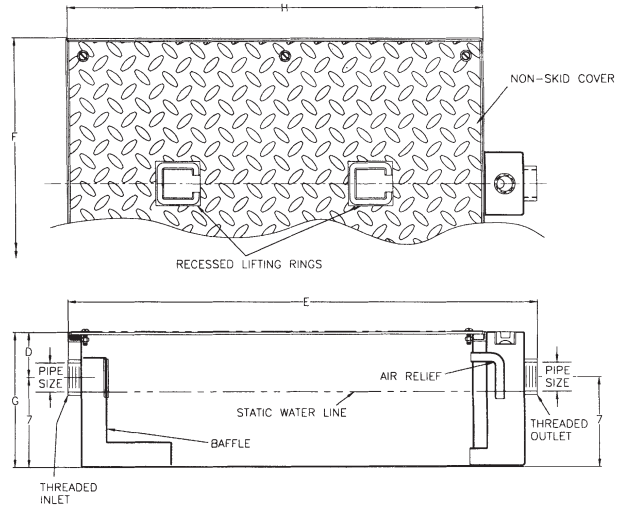
JOSAM 60115A/60117A Series epoxy coated fabricated steel Grease Interceptor, shallow on-floor type, threaded connections, internal air relief, visible double wall trap, removable baffle, gasketed non-skid cover and flow control fitting.

Available Options

- 65 Hub Inlet, Spigot Outlet, 2"
- 66 Hub Inlet, Spigot Outlet, 3"
- -68 3" Inlet and Outlet Available on Standard 2" Size

- 2" sizes normally furnished with 3" x 2" reducing bushings.

| TYPE NO. | FLOW RATE GPM | GREASE CAP. LBS. | PIPE SIZE | D | E | F | G | H | LBS. |
|----------|---------------|------------------|-----------|-------|--------|--------|--------|--------|------|
| 60115A | 20 | 40 | 2• | 3-1/2 | 36-3/8 | 22-5/8 | 10-1/2 | 31-5/8 | 109 |
| 60117A | 35 | 70 | 3 | 4-1/2 | 47-3/4 | 28-5/8 | 11-1/2 | 42-5/8 | 165 |



60115-SA SERIES

SEMI-AUTOMATIC, LOW TYPE

APPLICATION

For use in restaurant and institutional kitchens and all types of food handling and processing areas where waste water contains fats, oil and grease (FOG). Semi-automatic draw-off allows for easy odor and mess free grease removal without opening the cover. Low profile interceptor designed to fit on the floor under equipment in a limited space.

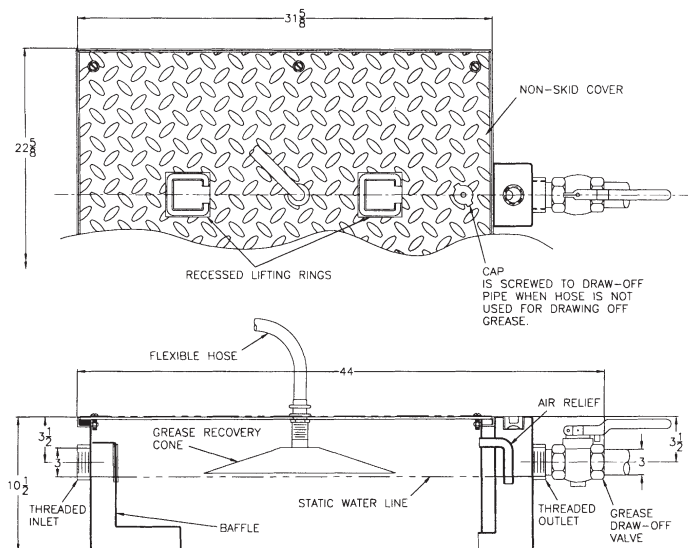
SPECIFICATION

JOSAM 60115-SA Series epoxy coated fabricated steel Grease Interceptor, shallow on-floor type, threaded connections, internal air relief, visible double wall trap, removable baffle, gasketed non-skid cover, grease recovery cone, flexible hose, grease draw-off valve and flow control fitting.

Available Options

- 65 Hub Inlet, Spigot Outlet, 2"
- 66 Hub Inlet, Spigot Outlet, 3"

| TYPE NO. | FLOW RATE GPM | GREASE CAPACITY LBS. | LBS. |
|----------|---------------|----------------------|------|
| 60115-SA | 35 | 70 | 124 |



NOTE: HGT. OF 8-1/2" REQUIRED FROM TOP OF INTERCEPTOR TO BOTTOM OF FIXTURE.

INTERCEPTORS