

60210A SERIES MANUAL CLEANING TYPE

APPLICATION

For use in restaurant and institutional kitchens and all types of food handling and processing areas where waste water contains fats, oil and grease (FOG).

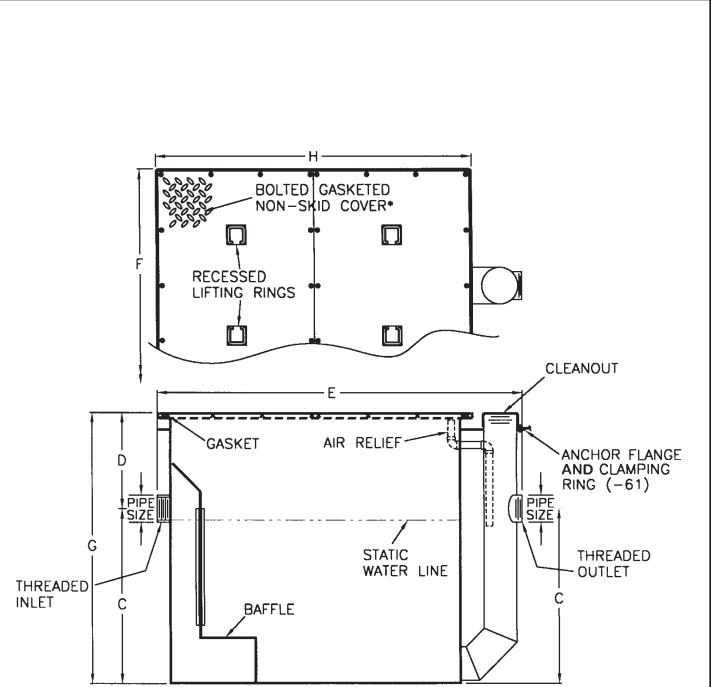
SPECIFICATION

JOSAM 60210A Series epoxy coated fabricated steel Grease Interceptor, high volume, threaded connections, internal air relief, visible double wall trap, removable baffle, gasketed non-skid cover and flow control fitting.

Available Options

- ▼ -EXT Extension, 6" Standard. (Specify Extension Height)
- 60 Anchor Flange
- 61 Flange and Clamp Device
- ▼ -ISI Integrated Solids Interceptor
- HD Heavy-Duty Cover
- SAP Sensing and Alarm Probe

TYPE NO.	FLOW RATE GPM	GREASE CAP LBS.	PIPE SIZE	ROUGH-IN CENTERS		LGTH. E	WIDTH F	HGT. G	COVER H	LBS.
				C	D					
60213A	150	300	4	27	8	60	39	35	53	725
60214A	200	400	5	31-1/2	10	67	42	41-1/2	58	1150
60215A	250	500	5	35-1/2	10	72	46	45-1/2	63	1425
60216A	350	700	6	39-1/2	12	80	52	51-1/2	71	1800
60217A	500	1000	6	43-1/2	12	91	59	55-1/2	82	2300



* 60213A FURNISHED WITH ONE-PIECE COVER.

60210A-SAP SERIES with Wireless Sensing and Alarm Probe

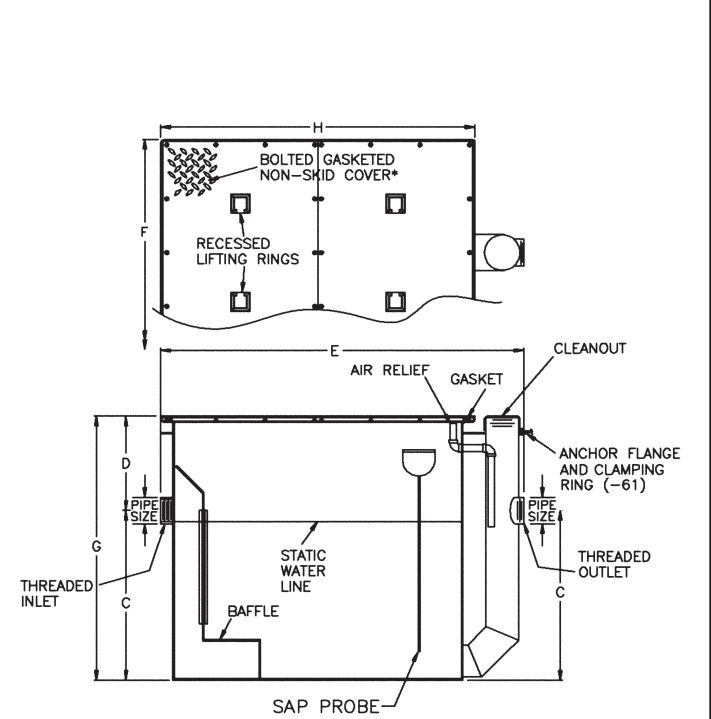
APPLICATION

For use in restaurant and institutional kitchens and all types of food handling and processing areas where waste water contains fats, oil and grease (FOG). Will monitor and alarm facility personnel when interceptor cleaning is required.

SPECIFICATION

JOSAM 60210A-SAP Series epoxy coated fabricated steel Grease Interceptor, high volume, threaded connections, internal air relief, visible double wall trap, removable baffle, gasketed non-skid cover, flow control fitting and factory installed wireless Sensing and Alarm Probe (SAP) assembly. Wall-mounted controller is battery powered by a UL listed 9VDC transformer and has L.E.D. indicators with audible alarm and permanent memory. Probe assembly is mounted to a bracket for precise placement ensuring accurate and reliable readings and transmits to controller via a wireless signal.

TYPE NO.	FLOW RATE GPM	GREASE CAP LBS.	PIPE SIZE	ROUGH-IN CENTERS		LGTH. E	WIDTH F	HGT. G	COVER H	LBS.
				C	D					
60213A-SAP	150	300	4	27	8	60	39	35	53	727
60214A-SAP	200	400	5	31-1/2	10	67	42	41-1/2	58	1152
60215A-SAP	250	500	5	35-1/2	10	72	46	45-1/2	63	1427
60216A-SAP	350	700	6	39-1/2	12	80	52	51-1/2	71	1802
60217A-SAP	500	1000	6	43-1/2	12	91	59	55-1/2	82	2302



* 60213A-SAP FURNISHED WITH ONE-PIECE COVER.

60210A-EXT SERIES

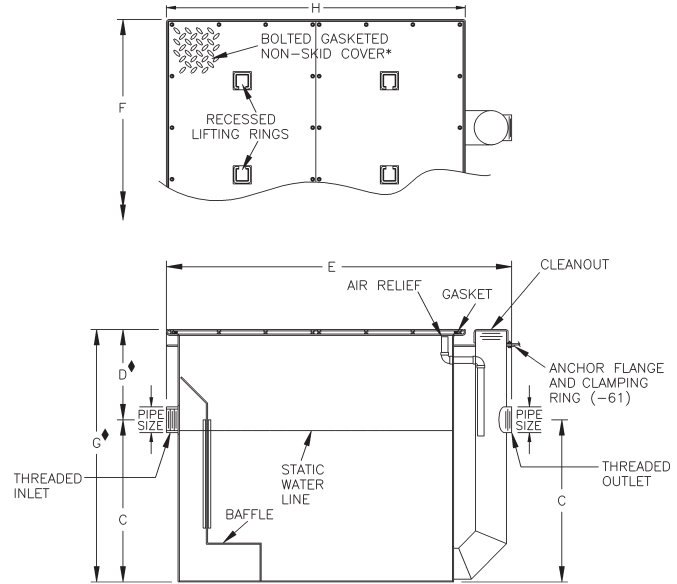
with Extension

APPLICATION

For use in large restaurant and institutional kitchens and all types of food handling and processing areas where waste water contains large amounts of fats, oil and grease (FOG). Extended top with fixed extension for installations requiring additional roughing depth from the cover of the interceptor to the inlet and outlet.

SPECIFICATION

JOSAM 60210A-EXT Series epoxy coated fabricated steel Grease Interceptor, high volume, deep roughing, integral extension, threaded connections, internal air relief, visible double wall trap, removable baffle, gasketed non-skid cover and flow control fitting.



◆ DIMENSIONS BASED ON STD. 6" EXTENSION

* 60213A-EXT FURNISHED WITH ONE-PIECE COVER.

TYPE NO.	FLOW RATE GPM	GREASE CAP LBS.	PIPE SIZE	ROUGH-IN CENTERS		LGTH. E	WIDTH F	HGT. G	COVER H	LBS.
				C	D					
60213A-EXT	150	300	4	27	14	60	39	41	53	935
60214A-EXT	200	400	5	31-1/2	16	67	42	47-1/2	58	1150
60215A-EXT	250	500	5	35-1/2	16	72	46	51-1/2	63	1425
60216A-EXT	350	700	6	39-1/2	18	80	52	57-1/2	71	1800
60217A-EXT	500	1000	6	43-1/2	18	91	59	61-1/2	82	2300

60210A-ISI SERIES

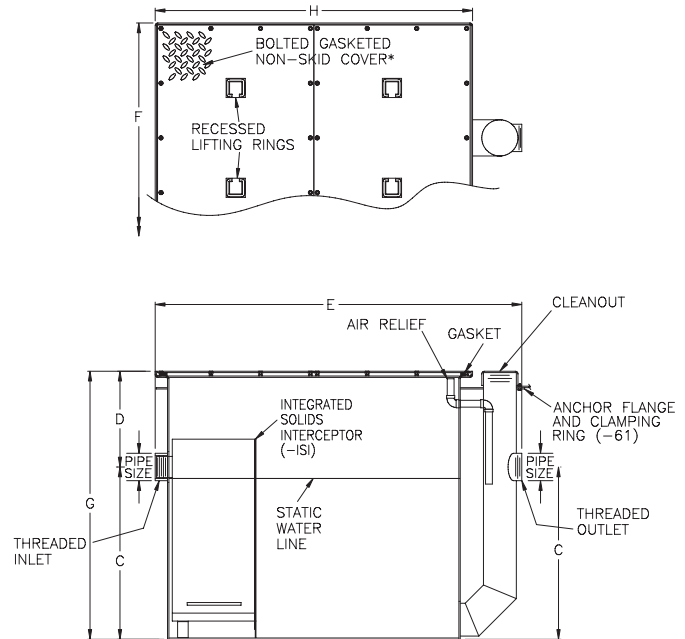
with Integrated Solids Interceptor

APPLICATION

For use in large restaurant and institutional kitchens and all types of food handling and processing areas where waste water contains large amounts of fats, oil and grease (FOG).

SPECIFICATION

JOSAM 60210A-ISI Series epoxy coated fabricated steel Grease Interceptor, high volume, threaded connections, internal air relief, visible double wall trap, integrated solids interceptor, gasketed non-skid cover and flow control fitting.



* 60213A-ISI FURNISHED WITH ONE-PIECE COVER.

TYPE NO.	FLOW RATE GPM	GREASE CAP LBS.	PIPE SIZE	ROUGH-IN CENTERS		LGTH. E	WIDTH F	HGT. G	COVER H	LBS.
				C	D					
60213A-ISI	150	300	4	27	8	60	39	35	53	975
60214A-ISI	200	400	5	31-1/2	10	67	42	41-1/2	58	1200
60215A-ISI	250	500	5	35-1/2	10	72	46	45-1/2	63	1475
60216A-ISI	350	700	6	39-1/2	12	80	52	51-1/2	71	1850
60217A-ISI	500	1000	6	43-1/2	12	91	59	55-1/2	82	2400

INTERCEPTORS