

60300A SERIES

GI 2000A AUTOMATIC GREASE RECOVERY DEVICE

APPLICATION

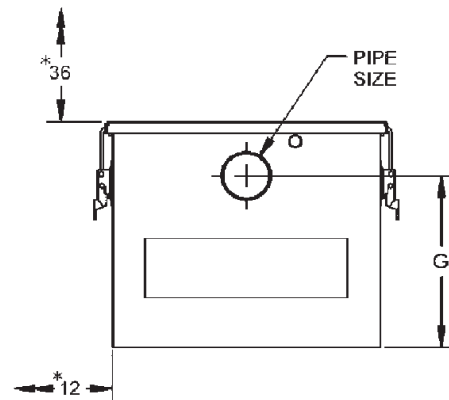
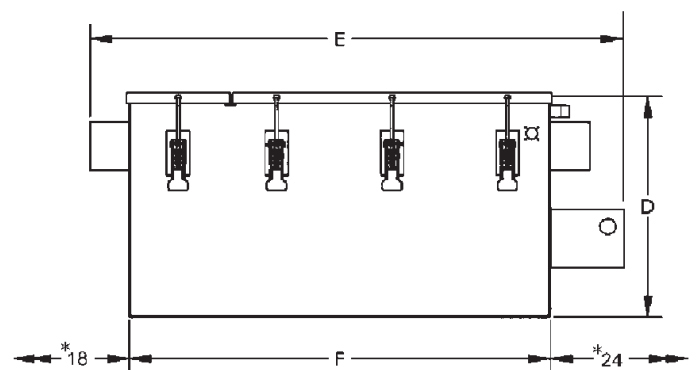
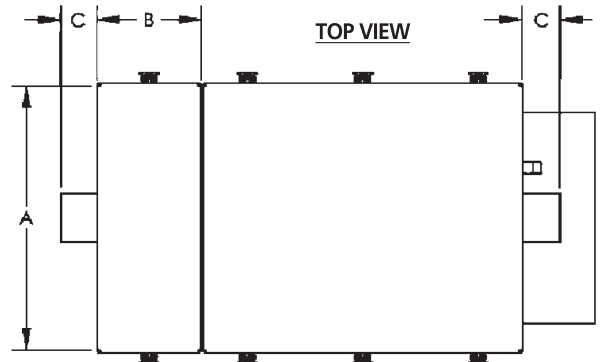
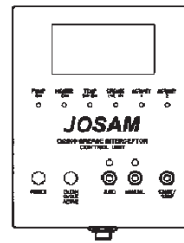
For use in restaurant and institutional kitchens and all types of food handling and processing areas where waste water contains, fats, oil and grease (FOG).

SPECIFICATION

JOSAM 60300A Series fully automatic Grease Recovery Device (GRD) is constructed of 304 grade stainless steel with supplemental solids interceptor, removable basket, stainless steel draw latches, non-adhesive "U" channel gasket, 55 gallon polypropylene reclaim tank with alarm and pump, may be floor mounted, partially recessed, or below grade in vaulted enclosure and is capable of measuring grease, heating congealed grease, and transferring grease via pump to a remote reclaim tank. The data is then sent to a Nema encased controller with an LCD display and LED indicators to provide current system status. The micro-processor records and displays clean cycles on a daily, weekly, monthly and yearly basis.

Available Options

- 23 Remote Monitoring Package
 - (-23 A) Monitoring Plan
 - (-23 B) Monitoring Plan
 - (-23 C) Monitoring Plan
- 24 Extended Warranty Package
- 33 55-Gallon Stainless Steel Reclaim Tank
- 34 55-Gallon Steel Reclaim Tank



| TYPE NO. | FLOW RATE GPM | GREASE CAP LBS. | PIPE SIZE | A | B | C | D | E | F | G | LBS. |
|----------|---------------|-----------------|-----------|--------|---|-------|--------|---------|--------|--------|------|
| 60306A | 25 | 50 | 3 | 24-3/8 | 9 | 3-1/2 | 16 | 35-1/2 | 25-5/8 | 11 | 220 |
| 60307A | 35 | 70 | 3 | 24-3/8 | 9 | 3-1/2 | 20 | 40-5/8 | 31-1/2 | 15-1/2 | 340 |
| 60308A | 50 | 100 | 3 | 25-7/8 | 9 | 3-1/2 | 22-1/2 | 42-3/8 | 33 | 17-1/2 | 425 |
| 60309A | 75 | 150 | 4 | 25-7/8 | 9 | 3-1/2 | 26 | 56-1/8 | 46-3/4 | 21-1/2 | 700 |
| 60310A• | 100 | 200 | 4 | 35 | 9 | 3-1/2 | 31 | 67-1/2 | 58 | 23 | 800 |
| 60311A• | 150 | 300 | 4 | 39 | 9 | 3-1/2 | 35 | 73-3/4 | 64 | 27 | 1100 |
| 60312A• | 200 | 400 | 6 | 43 | 9 | 3-1/2 | 41 | 80-3/4 | 71 | 31-1/2 | 1250 |
| 60313A• | 250 | 500 | 6 | 47 | 9 | 3-1/2 | 44-3/4 | 85-3/4 | 76 | 35-1/2 | 1400 |
| 60314A• | 350 | 700 | 6 | 47 | 9 | 3-1/2 | 48 | 105-1/2 | 96 | 39-1/2 | 1525 |
| 60315A** | 500 | 1000 | 6 | 47 | 9 | 3-1/2 | 51 | 130-7/8 | 120 | 44 | 1650 |

- 55-GAL. RECLAIM TANK NOT SHOWN
- * RECOMMENDED CLEARANCES
- INCLUDES EXTERNAL MACERATING PUMP
- ** UTILIZES TWO PUMPS & RECLAIM TANKS