

67360-DH SERIES

with -DH Double Hub

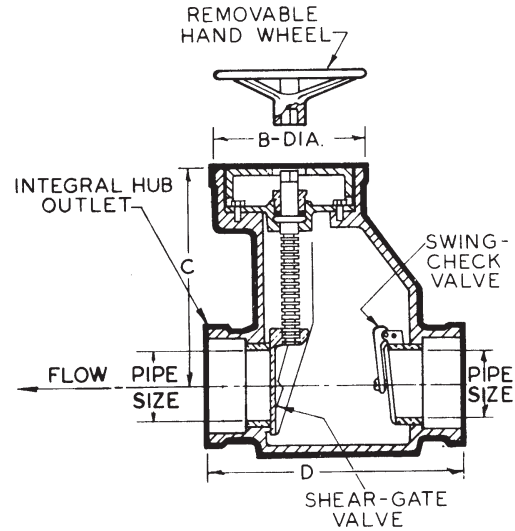
APPLICATION

For use in main or branch drain lines to protect basements and lower areas from sewer back up. Flapper type backwater valve provides continuous protection against sewage backflow into building. Manually closed shear-gate valve provides additional complete "closure" protection during emergency storm conditions or when building is completely shut down.

SPECIFICATION

JOSAM 67360-DH Series coated cast iron combination Backwater Valve, straight-through type, bronze swing-check assembly, bronze manually operated shear-gate with non-rising stem and hub connections.

STRAIGHT-THROUGH TYPE
FOR EXISTING
INSTALLATIONS



NOTE: SWING-CHECK VALVE NORMALLY HANGS IN CLOSED POSITION, BUT CAN BE SET TO HANG OPEN.

TYPE NO.	PIPE SIZE	B	C	D	LBS.
67363-DH	3	8	12	16	80
67364-DH	4	8	12	16	80
67365-DH	5	10-1/2	14-1/2	16	120
67366-DH	6	10-1/2	14-1/2	16	120

67400 SERIES

NO-HUB SWING-CHECK TYPE

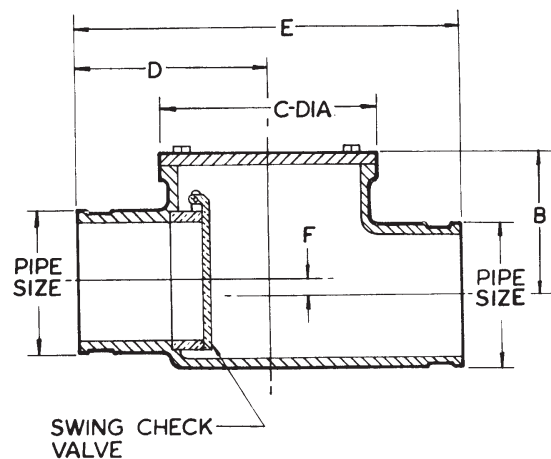
APPLICATION

For use in main or branch drain lines to protect basements and lower areas from sewer back up. Flapper type backwater valve provides continuous protection against sewage backflow into building.

SPECIFICATION

JOSAM 67400 Series coated cast iron Backwater Valve, offset type, bronze fixed swing-check assembly, bolted gasketed cover and no-hub connections.

BOLTED COVER,
OFFSET TYPE



TYPE NO.	PIPE SIZE	B	C	D	E	F	LBS.
67402	2	3-5/8	5-1/4	4	8	1/2	10
67403	3	4	6	5	10	1/2	13
67404	4	4-3/4	7	6	12	1/2	21
67406	6	5-3/4	9	6	12	5/8	38

BWW, HYDRANTS & SHOCKS