

## 76010 SERIES

## 12" WIDE, RECTANGULAR

### APPLICATION

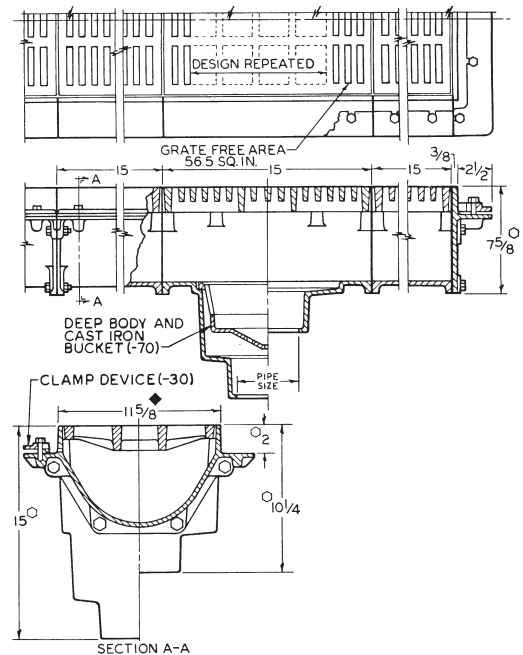
For use in heavy traffic areas where a wide, continuous trench drain that can serve as a temporary reservoir for large quantities of water is required, such as in parking garages, vehicle repair facilities, manufacturing plants and ramps. An outlet section can be used individually as an area drain.

### SPECIFICATION

JOSAM 76010 Series coated cast iron rectangular sectional Trench Drain with heavy-duty body sections and integral anchor flange, heavy-duty loose-set grates, 7/16" x 2-3/4" grate openings and bottom outlet.

### Available Options

-EXT	Extension Section	-30	Flashing Clamp Device
-1	Satin Finish Nikaloy Top	-40	Galvanized Cast Iron Parts
-2	Satin Finish Bronze Top	-70	Sediment Bucket
-7	Ductile Iron Grate	-70-40	Bucket, Galvanized
-11	Convex Grate	<b>OUTLET:</b>	
-VP	Secured Grate, Vandal-Proof Screws	-X	Inside Caulk Outlet



GRATE SLOT OPENING 2-3/4" X 7/16"

IT IS RECOMMENDED THAT NO MORE THAN 8 EXTENSION SECTIONS BE USED WITH ONE OUTLET SECTION.

○ ADD 1/4" WHEN FURNISHED WITH NIKALOY OR BRONZE TOP.

◆ ADD 3/8" TO WIDTH AND OVERALL LENGTH FOR NIKALOY OR BRONZE TOP.

## 76300 & 76400 SERIES

## LIGHT-DUTY, RECTANGULAR

### APPLICATION

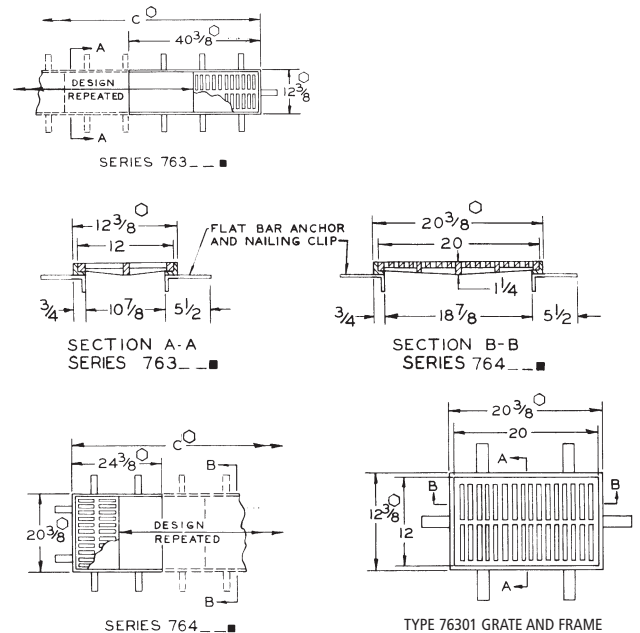
For use in pedestrian and light wheel traffic areas where a concrete or similarly constructed trench with 5/8" recessed frame, by others, has been constructed for use with JOSAM grate only. May be used end-to-end for 12" wide trench as long as needed. 76301 includes single grate and frame, by JOSAM, 20-3/8" x 12-3/8". 76302 includes end-to-end grates and frame by JOSAM. Frame and grate combination may be ordered to the necessary length to complete a continuous trench 12-3/8" wide. 76402 includes side-by-side grates and frame, by JOSAM. Frame and grate combination may be ordered to the necessary length to complete a continuous trench 20-3/8" wide.

### SPECIFICATION

JOSAM 76300 and 76400 Series coated cast iron rectangular light-duty sectional Trench Grate, 12" x 20" with 1/2" x 5" grate openings.

### Available Options

-1	Satin Finish Nikaloy Grate, Stainless Steel Frame	-VP	Secured Grate, Vandal-Proof Screws
-7	Ductile Iron Grate	-40	Galvanized
-8-2	All Bronze with Satin Finish Top		



GRATE SLOT OPENING 5" X 1/2" C.I.  
3-1/4" X 5/16" NIKALOY & BRONZE

DIM. OF TRENCH IS "C" DIM. LESS 1-1/2".

FREE AREA OF EACH GRATE IS 110 SQ. IN.

○ DIM. GIVEN IS BACK-TO-BACK OF 3/4" x 3/4" x 1/8" ANGLE FRAME.

■ LAST TWO DIGITS OF THESE SERIES INDICATE THE NUMBER OF GRATES.