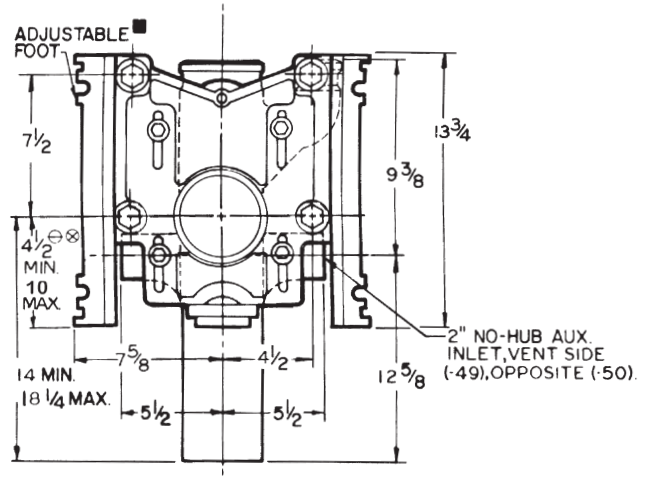
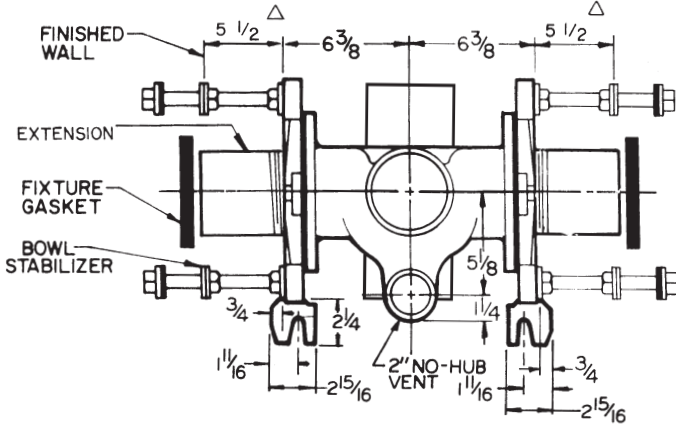


## VERTICAL 4" NO-HUB, ADJUSTABLE, BACK-TO-BACK

12724

**APPLICATION:** For use with Siphon Jet or Blowout Closets in No-Hub piping systems where back-to-back adjustable fitting with vertical flow is desired.

Back-to-Back Fitting, On Stack, 2" Vent



117 LBS.

OPTIONS N/A: -HD4, -HVS4.

## OPTIONS & NOTES

- |         |                                |       |  |
|---------|--------------------------------|-------|--|
| -PF     | Pylon Foot, Std.               | -6    | Supply Pipe Support (Specify type of Pipe)                 |
| -OR     | O-Ring Carrier                 | -10   | AB Extension through 10-1/2" Wall                          |
| -SD     | Special-Duty 100 lb. Carrier   | -24   | Carrier for Floor Mounted Back-Outlet China Bowls          |
| ▼ -HS   | Hub & Spigot                   | -30   | Cast Iron Adjustable Extension with Connector              |
| ▼ -D4   | Double 4" No-Hub Branches      | -30-2 | Cast Iron Adjustable Extension with Connector and Test Cap |
| ▼ -HD4  | Double 4" Hub Branches         | -32   | Carrier for Wide Chase Installations                       |
| ▼ -VS4  | Vent Side 4" No-Hub Branch     | -35   | Closet Carrier for Wheelchair High Rough                   |
| ▼ -OS4  | Opposite Vent 4" No-Hub Branch | -49   | No-Hub High Auxiliary Inlet, Under Vent                    |
| ▼ -HVS4 | Vent Side 4" Hub Branch        | -50   | No-Hub High Auxiliary Inlet, Opposite Vent                 |
| -VP     | Vandal-Proof Trim              | -53   | Threaded High Auxiliary Inlet, Under Vent                  |
| -1      | Positioning Frame              | -54   | Threaded High Auxiliary Inlet, Opposite Vent               |

■ RECOMMENDED FOR BE SECURED TO FLOOR WITH 1/2" BOLTS AND ANCHORS OR OTHERS

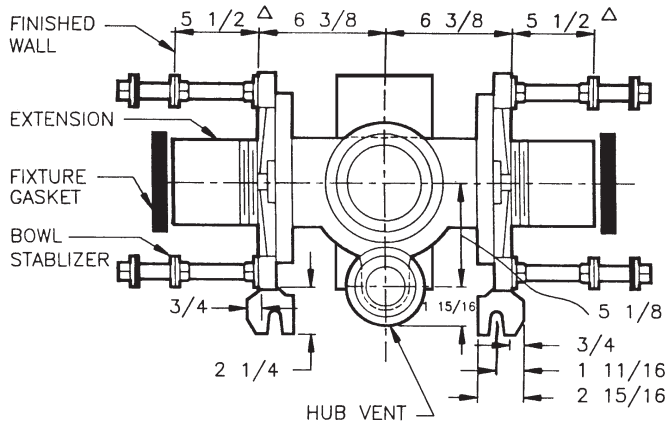
◊ DIMS SHOWS FOR SIPHON JET BLOWOUTS: Ø 11" MIN & 16-1/2" MAX.

⊗ FOR ROUGH IN OVER 6" FOR SIPHON JET OR 12-1/2" FOR BLOWOUTS SPECIFY ORDER.

△ FOR DIMS SHORTER THAN 1-1/2" (1" MIN) CUT EXT SPECIFY 10 FOR LONGER EXT (10-1/2" MAX.)

**12724-HS SERIES**

Back-to-Back<sup>2</sup>" Vent

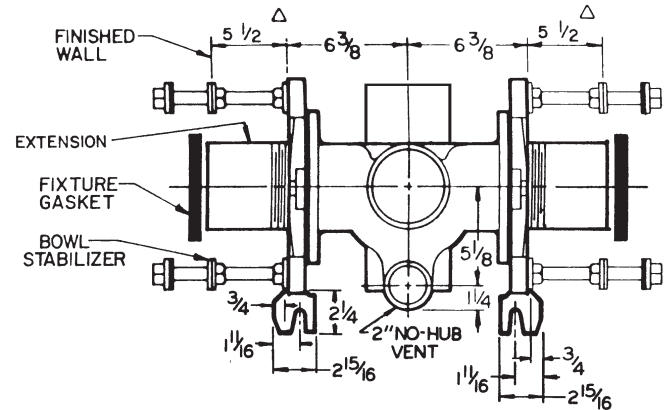


129 LBS.

OPTIONS N/A: -D4, -VS4, -OS4

**12724-VS4 SERIES**

Back-to-Back<sup>4</sup>" Branch,<sup>2</sup>" Vent Same Side

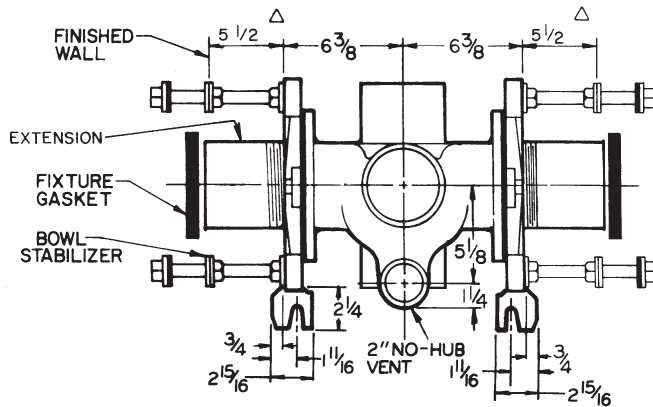


116 LBS.

OPTIONS N/A: -49, -53

**12724-OS4 SERIES**

Back-to-Back<sup>4</sup>" Branch,<sup>2</sup>" Vent Opposite Side

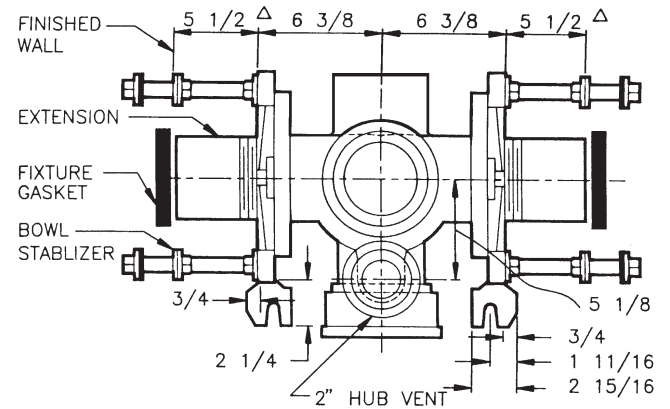


116 LBS.

OPTIONS N/A: -50, -54

**12724-HS-HVS4 SERIES**

Back-to-Back Single Branch,<sup>2</sup>" Vent

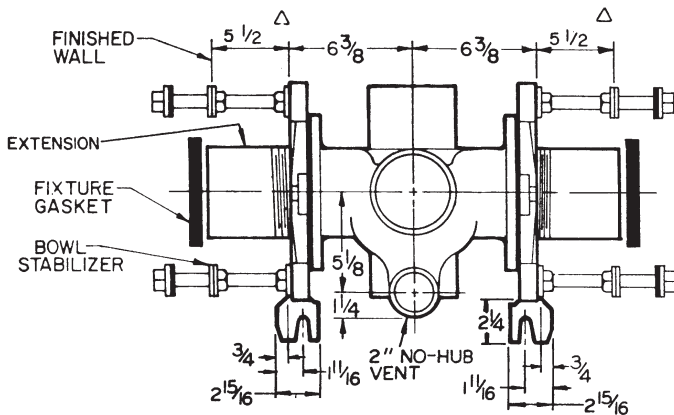


118 LBS.

OPTIONS N/A: -49, -53

**12724-D4 SERIES**

Back-to-Back<sup>Two 4</sup>" Branches <sup>2</sup>" Vent

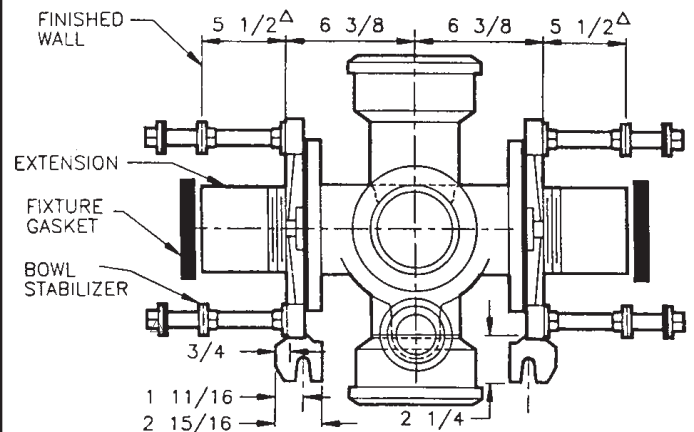


115 LBS.

OPTIONS N/A: -49, -50, -53, -54

**12724-HS-HD4 SERIES**

Back-to-Back<sup>Two 4</sup>" Branches <sup>2</sup>" Vent



131 LBS.

OPTIONS N/A: -49, -50, -53, -54

**⚠ WARNING: Cancer and Reproductive Harm - [www.p65warnings.ca.gov](http://www.p65warnings.ca.gov)**