

17125 SERIES

WALL-MOUNT, Concealed Arms

APPLICATION

For use with lavatories punched for concealed arms where wall construction will support the fixture and carrier assembly.

SPECIFICATION

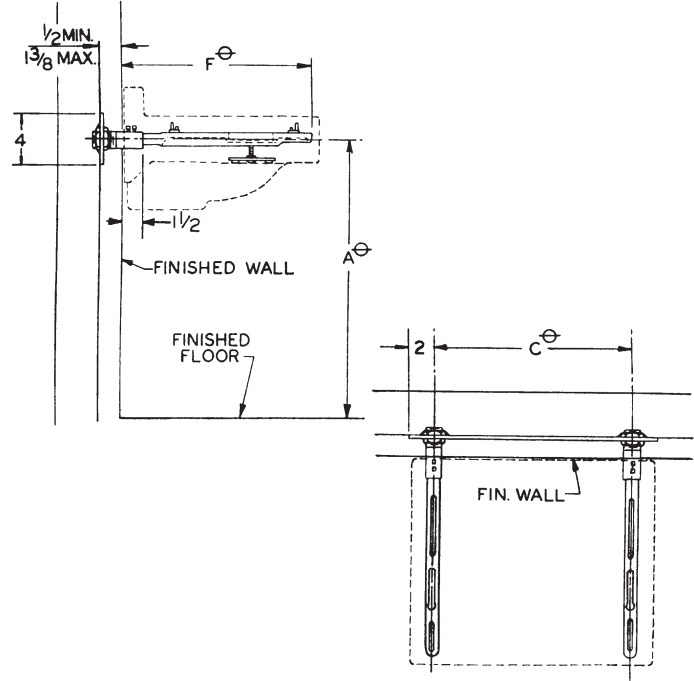
JOSAM 17125 Series wall-mounted, single Lavatory Carrier with concealed arms, leveling and securing screws and steel plate for attaching to studs.

Available Options

- 10 Extension Sleeves Longer Than Standard, Specify Wall Thickness
- 75 2" Chrome-Plated Escutcheons

STD. ADJUSTABLE SLEEVE 4"

⊖ VARIABLE – DEPENDS ON FIXTURE.



12 LBS

17380 SERIES

FLOOR-MOUNT, Exposed Arms

APPLICATION

For use with lavatories designed for heavy-duty exposed arms where thin wall construction demands uprights that support the fixture completely independent of the wall.

SPECIFICATION

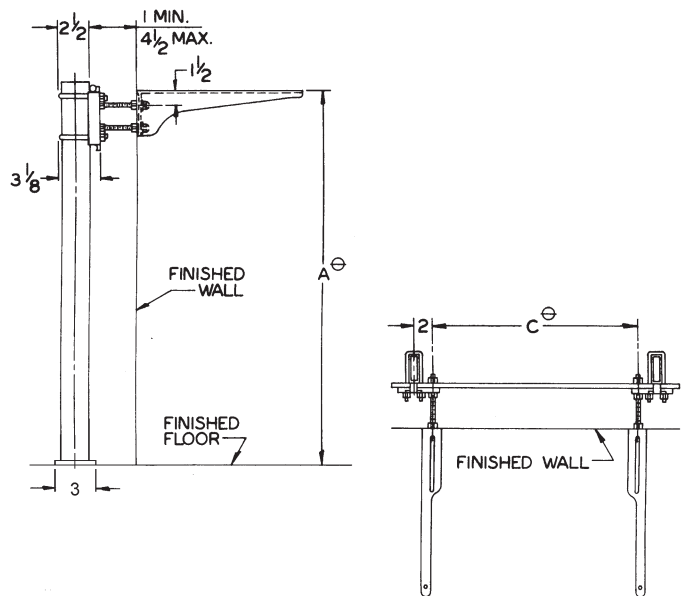
JOSAM 17380 Series floor-mounted, single Lavatory Carrier with exposed acid-resisting white coated arms, leveling and securing screws, structural uprights, welded feet and chrome-plated trim.

Available Options

- ▼ -BB Back-to-Back Carrier
- ▼ -HD Heavy-Duty
- VP Vandal-Proof Trim
- 10 Hardware for Walls Over 4-1/2", Specify Wall Thickness
- 60 Valve Plate for Attaching to Upright
- 66 Split Header for Stainless Steel Arms

REUSABLE ALIGNMENT TOOL
AVAILABLE. SEE PAGE 45.

WGT 19 LBS
WGT 19 LBS



49 LBS

⊖ VARIABLE – DEPENDS ON FIXTURE.

RECOMMEND ALL FEET BE SECURED TO FLOOR WITH 1/2" BOLTS AND ANCHORS BY OTHERS.

17380-BB SERIES FLOOR-MOUNT, -BB Back-to-Back

APPLICATION
For use with back-to-back lavatories designed for heavy-duty exposed arms where thin wall construction demands uprights that support the fixture completely independent of the wall.
SPECIFICATION
JOSAM 17380-BB Series floor-mounted, back-to-back Lavatory Carrier with exposed acid-resisting white coated arms, leveling and securing screws, structural uprights, welded feet and chrome-plated trim.
OPTION N/A -66
⊖ VARIABLE – DEPENDS ON FIXTURE. RECOMMEND ALL FEET BE SECURED TO FLOOR WITH 1/2" BOLTS AND ANCHORS BY OTHERS.

REUSABLE ALIGNMENT TOOL AVAILABLE. SEE PAGE 45.

56 LBS

17380-HD SERIES FLOOR-MOUNT, -HD Heavy-Duty

APPLICATION
For use with sinks designed for heavy-duty exposed arms where thin wall construction demands uprights that support the fixture completely independent of the wall.
SPECIFICATION
JOSAM 17380-HD Series floor-mounted, single, heavy-duty Sink Carrier with acid-resisting white coated arms, leveling and securing screws, structural uprights, welded feet and chrome-plated trim.
⊖ VARIABLE – DEPENDS ON FIXTURE. RECOMMEND ALL FEET BE SECURED TO FLOOR WITH 1/2" BOLTS AND ANCHORS BY OTHERS.

REUSABLE ALIGNMENT TOOL AVAILABLE. SEE PAGE 45.

51 LBS

17380-BB-HD SERIES FLOOR-MOUNT, -BB Back-to-Back, -HD Heavy-Duty

APPLICATION
For use with back-to-back sinks designed for heavy-duty exposed arms where thin wall construction demands uprights that support the fixture completely independent of the wall.
SPECIFICATION
JOSAM 17380-BB-HD Series floor-mounted, back-to-back, heavy-duty Sink Carrier with acid-resisting white coated arms, leveling and securing screws, structural uprights, welded feet and chrome-plated trim.
⊖ VARIABLE – DEPENDS ON FIXTURE. RECOMMEND ALL FEET BE SECURED TO FLOOR WITH 1/2" BOLTS AND ANCHORS BY OTHERS.

REUSABLE ALIGNMENT TOOL AVAILABLE. SEE PAGE 45.

49 LBS