

17405 SERIES

WALL-MOUNT, Exposed Arms

APPLICATION

For use with lavatories designed for heavy-duty exposed arms where wall construction will support the fixture and carrier assembly.

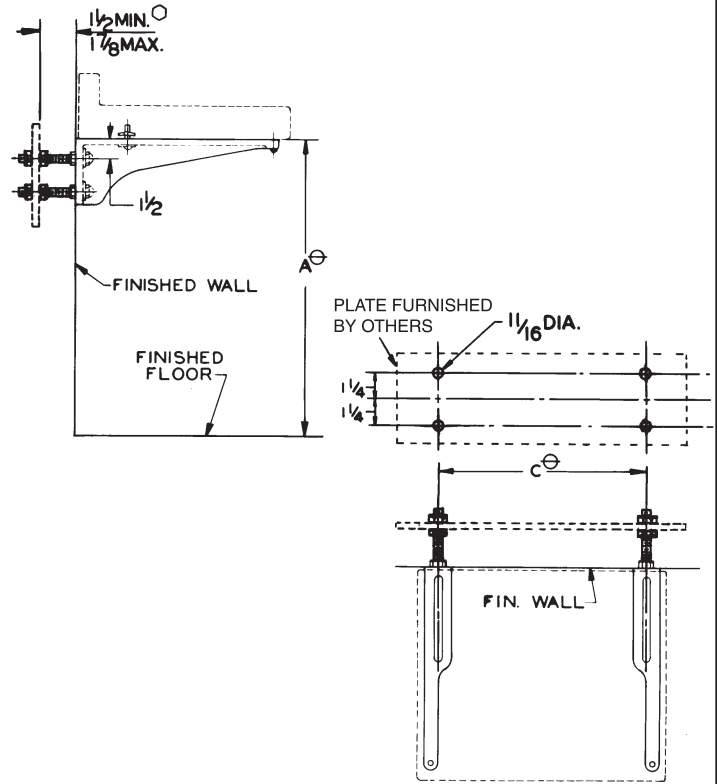
SPECIFICATION

JOSAM 17405 Series wall-mounted, single Lavatory Carrier with exposed acid-resisting white coated arms, leveling and securing screws, mounting rods for securing to wall plate by others and chrome-plated trim.

Available Options

- VP Vandal-Proof Trim
- 10 Hardware for Walls Over 4", Specify Wall Thickness

⊖ VARIABLE – DEPENDS ON FIXTURE.
 ○ DIM. BASED ON 1/4" PLATE BY OTHERS.



15 LBS

CARRIERS